

# KD-Validated Anti-Scaffold Attachment Factor B Recombinant Rabbit Monoclonal Antibody



**Catalog #: 61683**

## Aliases

SAFB; Scaffold Attachment Factor B; SAFB1; HET; HSP27 Estrogen Response Element-TATA Box-Binding Protein; Hsp27 ERE-TATA Binding Protein; HSP27 ERE-TATA-Binding Protein; Scaffold Attachment Factor B1; SAF-B1; SAF-B; HAP; Heat-Shock Protein (HSP27) Estrogen Response Element And TATA Box-Binding Protein; Glutathione S-Transferase Fusion Protein; SAB-B1

## Background

Gene Name: SAFB

NCBI Gene Entry: [6294](#)

UniProt Entry: [Q15424](#)

## Application Information

Molecular Weight: Predicted, 103 kDa; observed, 150 kDa

Clonality: Rabbit monoclonal antibody

Clone ID: 25GB3320

Species Reactivity: Human, mouse, rat

Applications Tested: Western blotting (WB), flow cytometry (FCM), immunocytochemistry (IC)

## Immunogen

A synthesized peptide derived from human SAFB

## Isotype

Rabbit IgG

## Storage Buffer

Supplied in PBS (pH 7.4) containing 50% glycerol, and 0.02% sodium azide.

## Storage

Store at -20 °C for one year.

## Recommended Dilutions

Western blotting (WB): 1:1,000-1:5,000

Flow Cytometry (FCM): 1:2,000

Immunocytochemistry (IC): 1:100-1:1,000

---

### SUPPORT

SUPPORT@GENUINBIOTECH.COM  
TEL: +1-540-855-7041

### ORDERS

SALES@GENUINBIOTECH.COM  
FAX: +1-540-855-7041

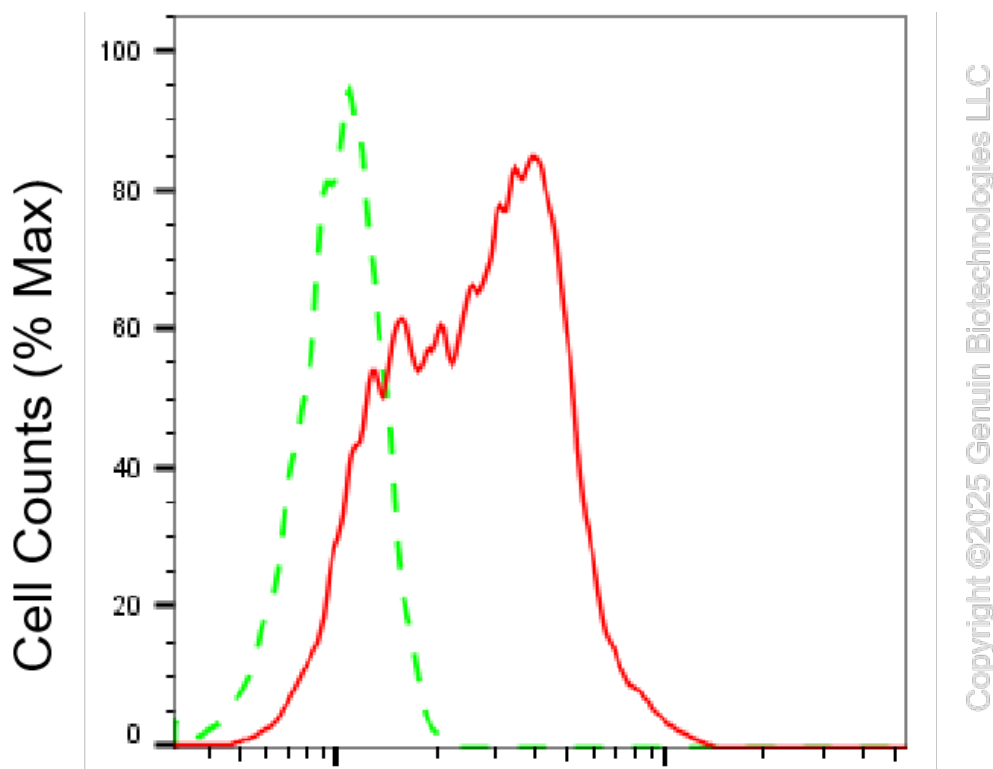
[WWW.GENUINBIOTECH.COM](http://WWW.GENUINBIOTECH.COM)

# KD-Validated Anti-Scaffold Attachment Factor B Recombinant Rabbit Monoclonal Antibody

PAGE 2

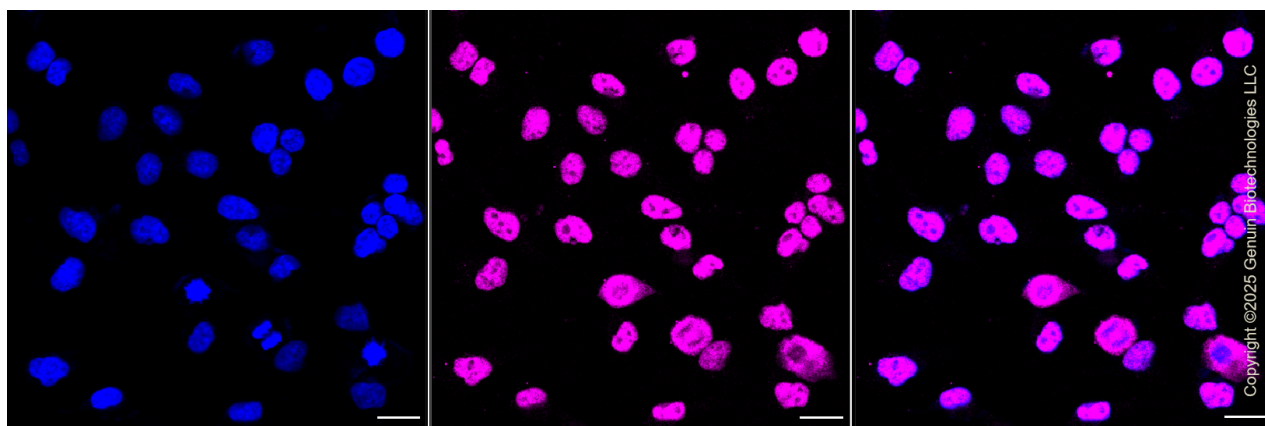
**Note:** This product is for research use only.

## Validation Data



## Scaffold attachment factor B-Alexa Fluor® 647

Flow cytometric analysis of Scaffold attachment factor B expression in HeLa cells using anti-Scaffold attachment factor B antibody (Cat#61683, 1:2,000). Green, isotype control; red, Scaffold attachment factor B.



Immunocytochemical staining of HeLa cells with anti-Scaffold attachment factor B antibody (Cat#61683, 1:1,000). Nuclei were stained blue with DAPI; Scaffold attachment factor B was

### SUPPORT

SUPPORT@GENUINBIOTECH.COM  
TEL: +1-540-855-7041

### ORDERS

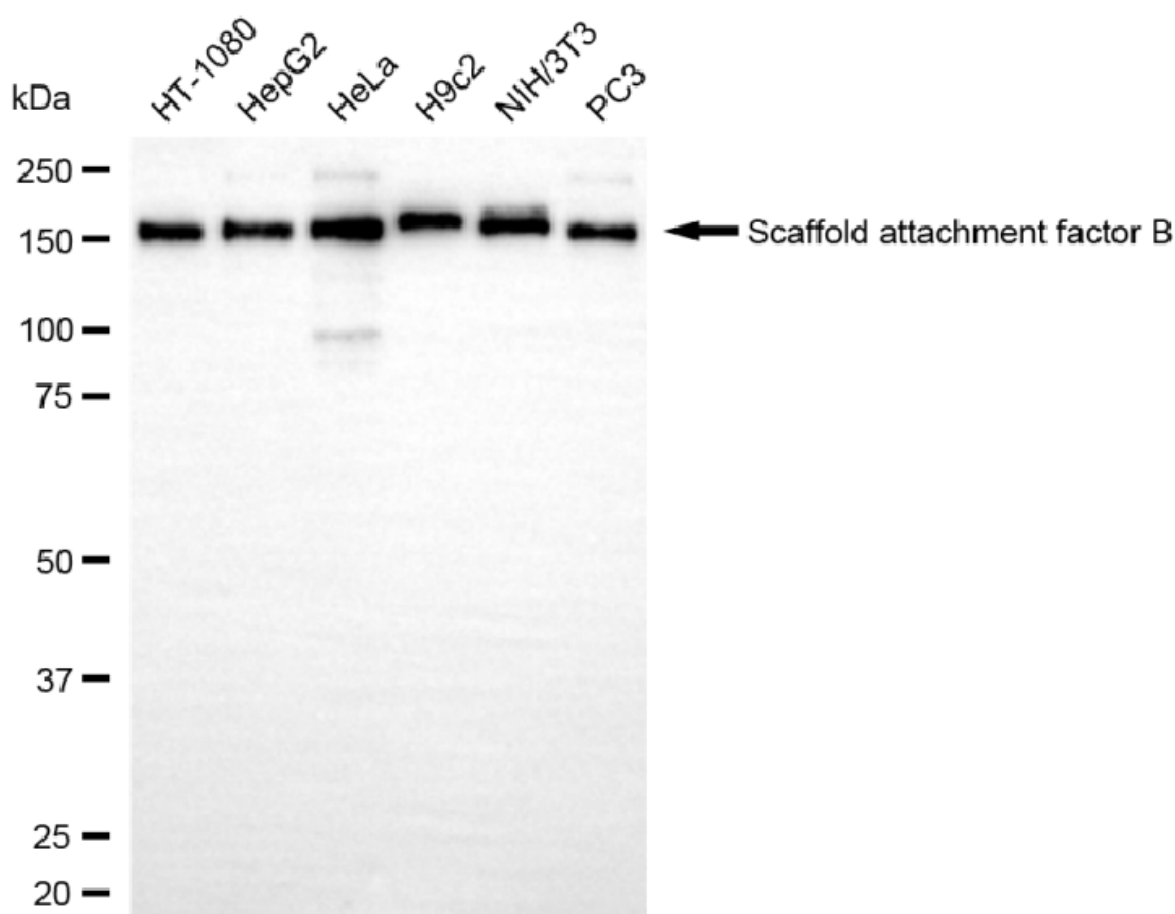
SALES@GENUINBIOTECH.COM  
FAX: +1-540-855-7041

WWW.GENUINBIOTECH.COM

## KD-Validated Anti-Scaffold Attachment Factor B Recombinant Rabbit Monoclonal Antibody

PAGE 3

stained magenta with Alexa Fluor® 647. Images were taken using Leica stellaris 5. Protein abundance based on laser Intensity and smart gain: Medium. Scale bar, 20 µm.



Copyright ©2025 Genuin Biotechnologies LLC

Western blotting analysis using anti-scaffold attachment factor B antibody (Cat#61683). Total cell lysates (30 µg) from various cell lines were loaded and separated by SDS-PAGE. The blot was incubated with anti-scaffold attachment factor B antibody (Cat#61683, 1:5,000) and HRP-conjugated goat anti-rabbit secondary antibody (Cat#201, 1:20,000) respectively. Image was developed using NaQ™ ECL Substrate Kit (Cat#716).

### SUPPORT

SUPPORT@GENUINBIOTECH.COM  
TEL: +1-540-855-7041

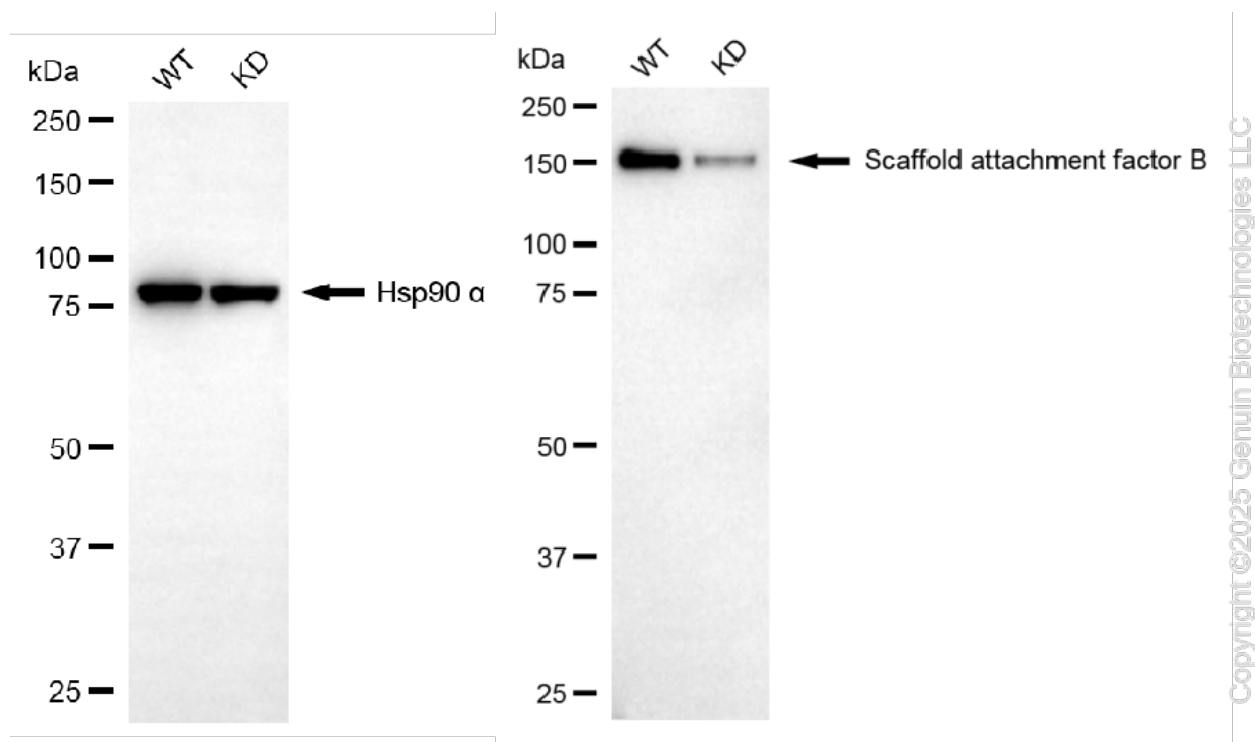
### ORDERS

SALES@GENUINBIOTECH.COM  
FAX: +1-540-855-7041

WWW.GENUINBIOTECH.COM

## KD-Validated Anti-Scaffold Attachment Factor B Recombinant Rabbit Monoclonal Antibody

PAGE 4



Western blotting analysis using anti-scaffold attachment factor B antibody (Cat#61683). Scaffold attachment factor B expression in wild-type (WT) and scaffold attachment factor B (SAFB) knockdown (KD) HeLa cells with 20 µg of total cell lysates. Hsp90 α serves as a loading control. The blot was incubated with anti-scaffold attachment factor B antibody (Cat#61683, 1:5,000) and HRP-conjugated goat anti-rabbit secondary antibody (Cat#201, 1:20,000) respectively. Image was developed using NaQ™ ECL Substrate Kit (Cat#716).

### SUPPORT

SUPPORT@GENUINBIOTECH.COM  
TEL: +1-540-855-7041

### ORDERS

SALES@GENUINBIOTECH.COM  
FAX: +1-540-855-7041

[WWW.GENUINBIOTECH.COM](http://WWW.GENUINBIOTECH.COM)