

KD-Validated Anti-Nudix hydrolase 1 Recombinant Rabbit Monoclonal Antibody



Catalog #: 61684

Aliases

NUDT1; Nudix Hydrolase 1; 7,8-Dihydro-8-Oxoguanine Triphosphatase; Nudix Motif 1; 8-Oxo-DGTPase; MTH1; Nudix (Nucleoside Diphosphate Linked Moiety X)-Type Motif 1; Nucleoside Diphosphate-Linked Moiety X-Type Motif 1; Methylated Purine Nucleoside Triphosphate Hydrolase; Oxidized Purine Nucleoside Triphosphate Hydrolase; 8-Oxo-7,8-Dihydrodeoxyguanosine Triphosphatase; Nucleoside Diphosphate-Linked Moiety X Motif 1; 8-Oxo-7,8-Dihydroguanosine Triphosphatase; 2-Hydroxy-DATP Diphosphatase; MutT Human Homolog 1; EC 3.6.1.56; EC 3.6.1.-

Background

Gene Name: NUDT1

NCBI Gene Entry: [4521](#)

UniProt Entry: [P36639](#)

Application Information

Molecular Weight: Predicted, 18 kDa, observed, 18 kDa

Clonality: Rabbit monoclonal antibody

Clone ID: 23GB4060

Species Reactivity: Human

Applications Tested: Western blotting (WB), flow cytometry (FCM), immunocytochemistry (IC)

Immunogen

A synthesized peptide derived from human MTH1

Isotype

Rabbit IgG

Storage Buffer

Supplied in PBS (pH 7.4) containing 50% glycerol, and 0.02% sodium azide.

Storage

Store at -20 °C for one year.

Recommended Dilutions

Western Blotting (WB): 1:1,000-1:5,000

Flow Cytometry (FCM): 1:2,000

SUPPORT

SUPPORT@GENUINBIOTECH.COM
TEL: +1-540-855-7041

ORDERS

SALES@GENUINBIOTECH.COM
FAX: +1-540-855-7041

WWW.GENUINBIOTECH.COM

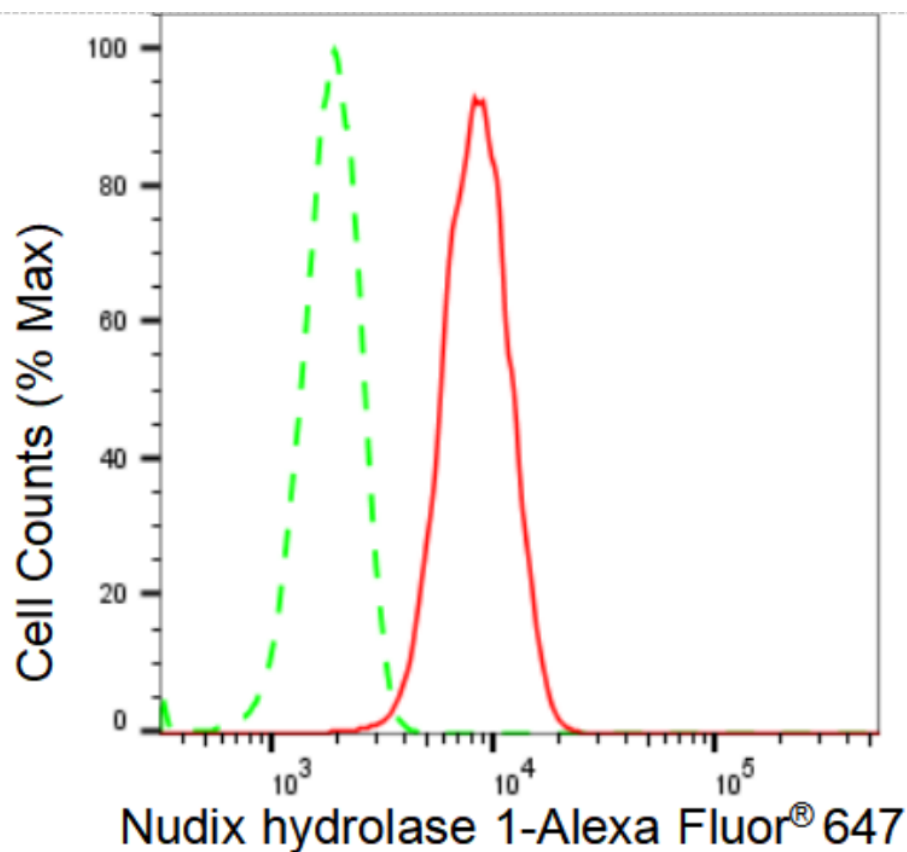
KD-Validated Anti-Nudix hydrolase 1 Recombinant Rabbit Monoclonal Antibody

PAGE 2

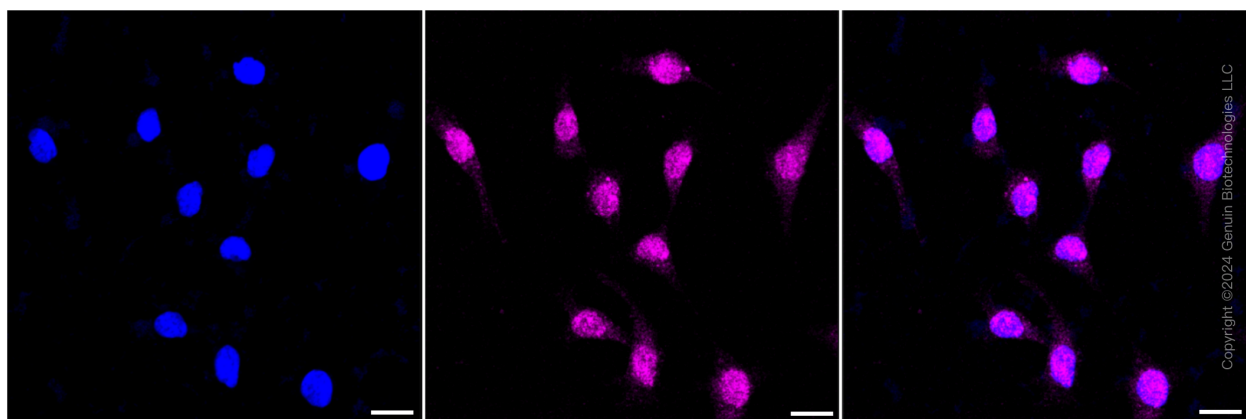
Immunocytochemistry (IC): 1:100-1:1,000

Note: This product is for research use only.

Validation Data



Flow cytometric analysis of Nudix hydrolase 1 expression in HeLa cells using Nudix hydrolase 1 antibody (Cat#61684, 1:2,000). Green, isotype control; red, Nudix hydrolase 1.



Immunocytochemical staining of HeLa cells with Nudix hydrolase 1 antibody (Cat#61684,

SUPPORT

SUPPORT@GENUINBIOTECH.COM
TEL: +1-540-855-7041

ORDERS

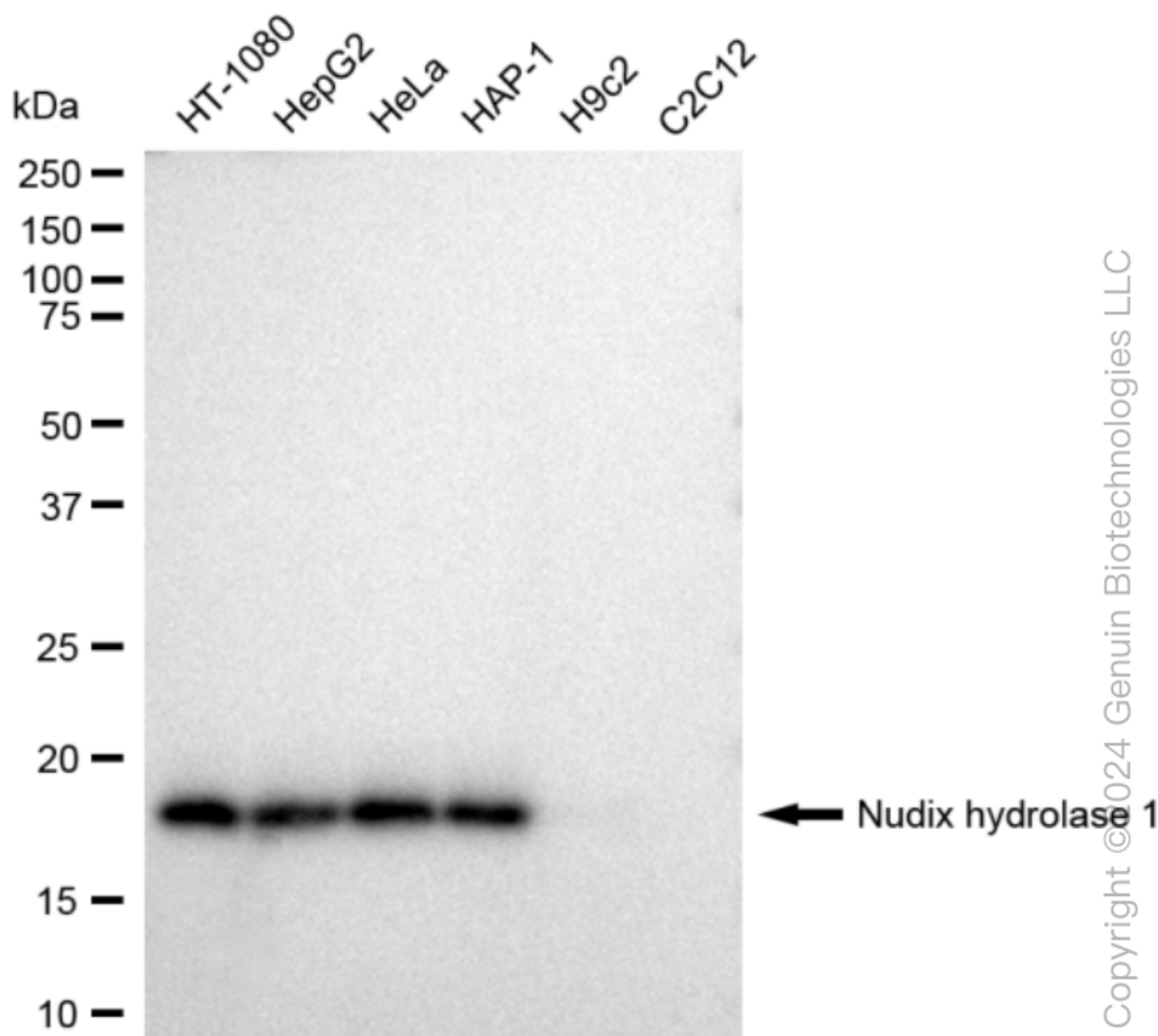
SALES@GENUINBIOTECH.COM
FAX: +1-540-855-7041

WWW.GENUINBIOTECH.COM

KD-Validated Anti-Nudix hydrolase 1 Recombinant Rabbit Monoclonal Antibody

PAGE 3

1:1,000). Nuclei were stained blue with DAPI; Nudix hydrolase 1 was stained magenta with Alexa Fluor® 647. Images were taken using Leica stellaris 5. Protein abundance based on laser Intensity and smart gain: Medium. Scale bar: 20 µm.



Western blotting analysis using anti-Nudix hydrolase 1 antibody (Cat#61684). Total cell lysates (30 µg) from various cell lines were loaded and separated by SDS-PAGE. The blot was incubated with anti-Nudix hydrolase 1 antibody (Cat#61684, 1:5,000) and HRP-conjugated goat anti-rabbit secondary antibody (Cat#201, 1:20,000) respectively. Image was developed using FeQ™ ECL Substrate Kit (Cat#226).

SUPPORT

SUPPORT@GENUINBIOTECH.COM
TEL: +1-540-855-7041

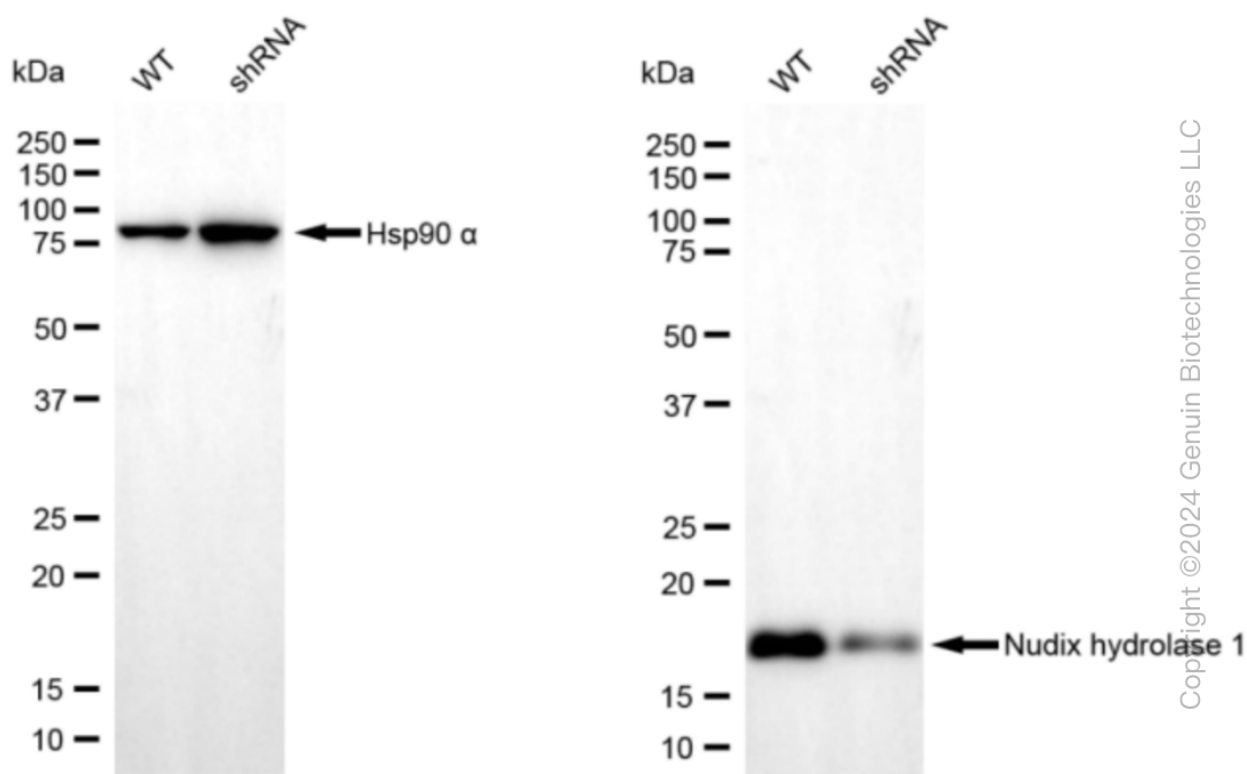
ORDERS

SALES@GENUINBIOTECH.COM
FAX: +1-540-855-7041

WWW.GENUINBIOTECH.COM

KD-Validated Anti-Nudix hydrolase 1 Recombinant Rabbit Monoclonal Antibody

PAGE 4



Western blotting analysis using anti-Nudix hydrolase 1 antibody (Cat#61684). Nudix hydrolase 1 expression in wild type (WT) and Nudix hydrolase 1 shRNA knockdown (KD) HeLa cells with 30 μ g of total cell lysates. Hsp90 α serves as a loading control. The blot was incubated with anti-Nudix hydrolase 1 antibody (Cat#61684, 1:5,000) and HRP-conjugated goat anti-rabbit secondary antibody (Cat#201, 1:20,000) respectively. Image was developed using FeQ™ ECL Substrate Kit (Cat#226).

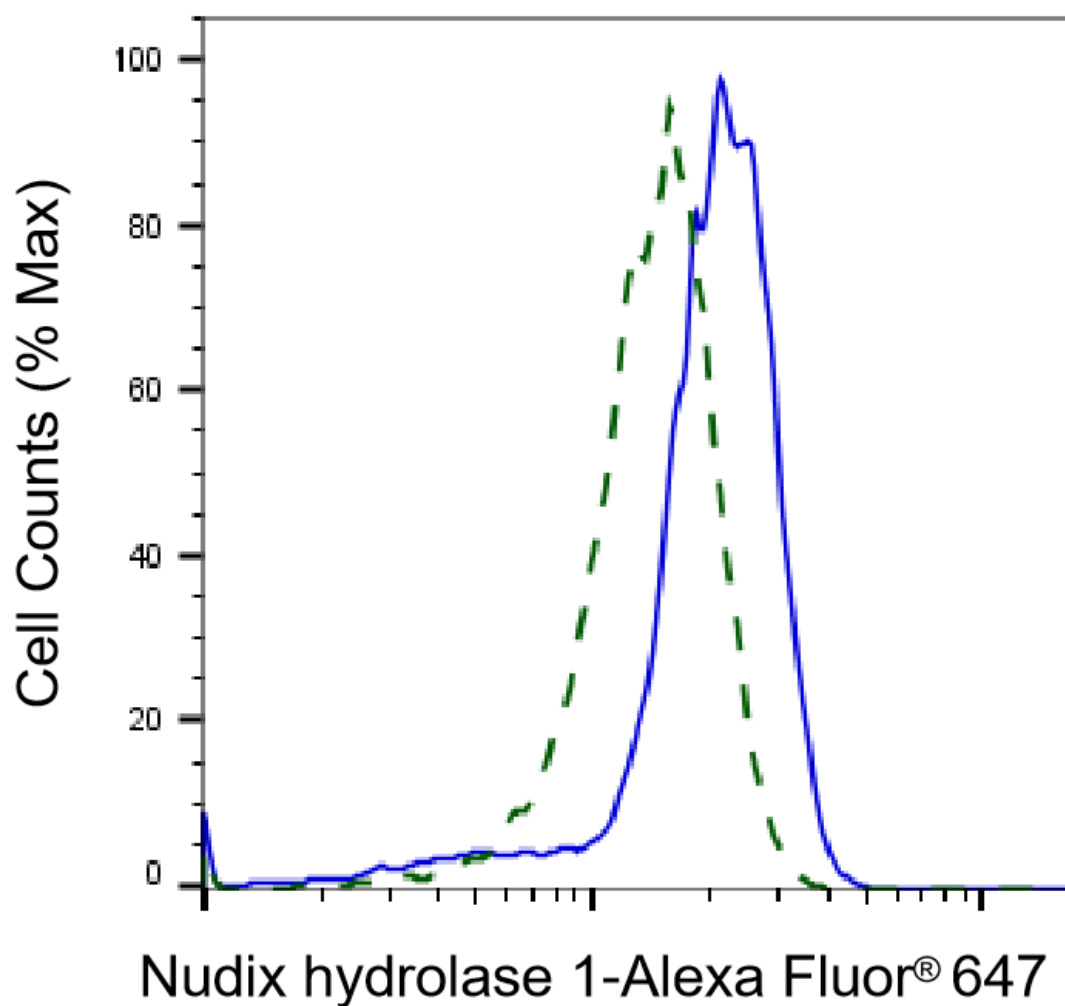
SUPPORT

SUPPORT@GENUINBIOTECH.COM
TEL: +1-540-855-7041

ORDERS

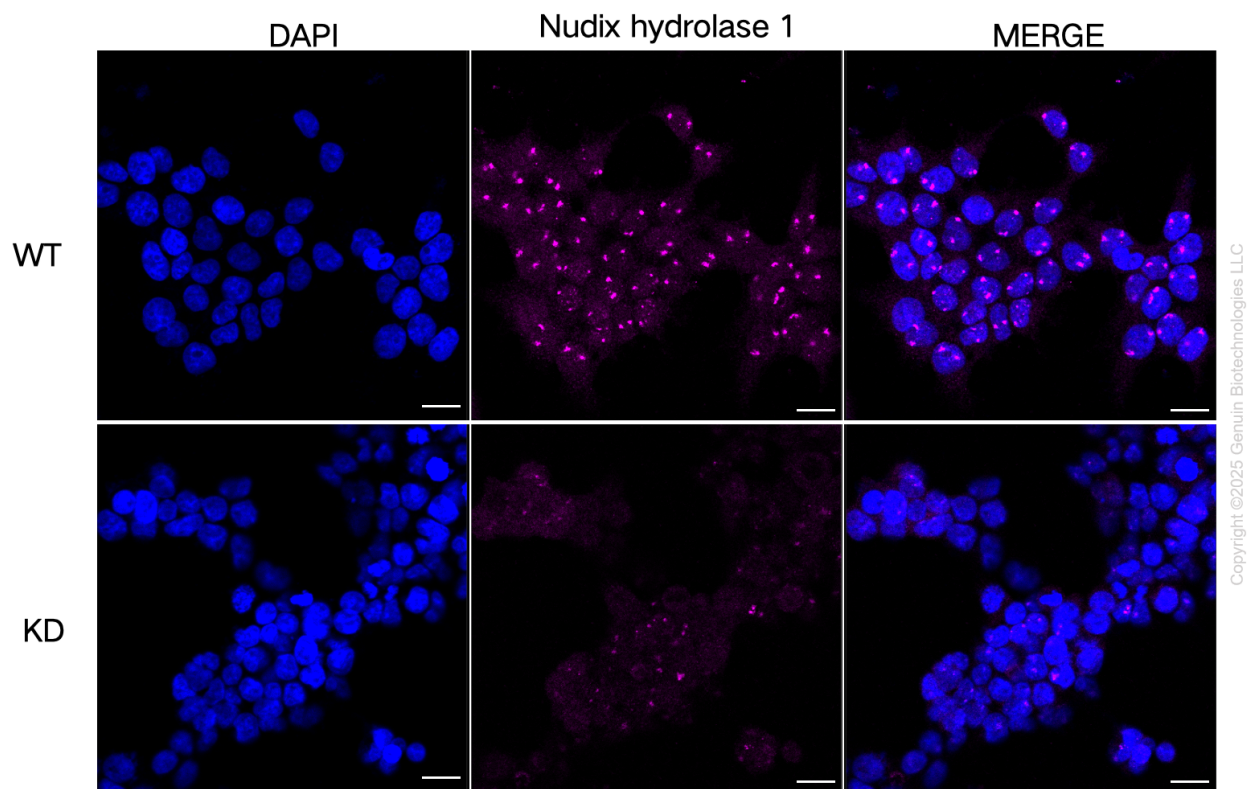
SALES@GENUINBIOTECH.COM
FAX: +1-540-855-7041

WWW.GENUINBIOTECH.COM



Copyright ©2025 Genuin Biotechnologies LLC

Validation of Nudix hydrolase 1 knockdown using flow cytometry. Wild-type(WT, Blue) and knockdown(KD, Green) HeLa cells were stained with anti-Nudix hydrolase 1 antibody (Cat#61684, 1:2,000) and analyzed using BD flow cytometer.



Immunocytochemical staining of HeLa cells using anti-Nudix hydrolase 1 antibody (Cat#61684, 1:1,000), Top panel: wild-type (WT); Bottom panel: Nudix hydrolase 1 shRNA knockdown (KD). Nuclei were stained blue with DAPI. Nudix hydrolase 1 was stained magenta with Alexa Fluor® 647. Scale bar, 20 μ m.