

KD-Validated Anti-Oxysterol binding protein like 1A Recombinant Rabbit Monoclonal



Catalog #: 61685

Aliases

OSBPL1A; Oxysterol Binding Protein Like 1A; ORP-1; ORP1; OSBPL1B; Oxysterol-Binding Protein-Related Protein 1; Oxysterol Binding Protein-Like 1B; OSBP-Related Protein 1; Oxysterol Binding Protein-Like 1A; OSBPL1; OSBP8

Background

Gene Name: OSBPL1A

NCBI Gene Entry: [114876](#)

UniProt Entry: [Q9BXW6](#)

Application Information

Molecular Weight: Predicted, 108 kDa, observed, 50,108 kDa

Clonality: Rabbit monoclonal antibody

Clone ID: 23GB4065

Species Reactivity: Human, mouse, rat

Applications Tested: Western blotting (WB), flow cytometry (FCM), immunocytochemistry (IC), immunohistochemistry (IHC)

Immunogen

A synthesized peptide derived from human ORP1

Isotype

Rabbit IgG

Storage Buffer

Supplied in PBS (pH 7.4) containing 50% glycerol, and 0.02% sodium azide.

Storage

Store at -20 °C for one year.

Recommended Dilutions

Western Blotting (WB): 1:1,000-1:5,000

Flow Cytometry (FCM): 1:2,000

Immunocytochemistry (IC): 1:100-1:1,000

Immunohistochemistry (IHC): 1:100-1:200

SUPPORT

SUPPORT@GENUINBIOTECH.COM
TEL: +1-540-855-7041

ORDERS

SALES@GENUINBIOTECH.COM
FAX: +1-540-855-7041

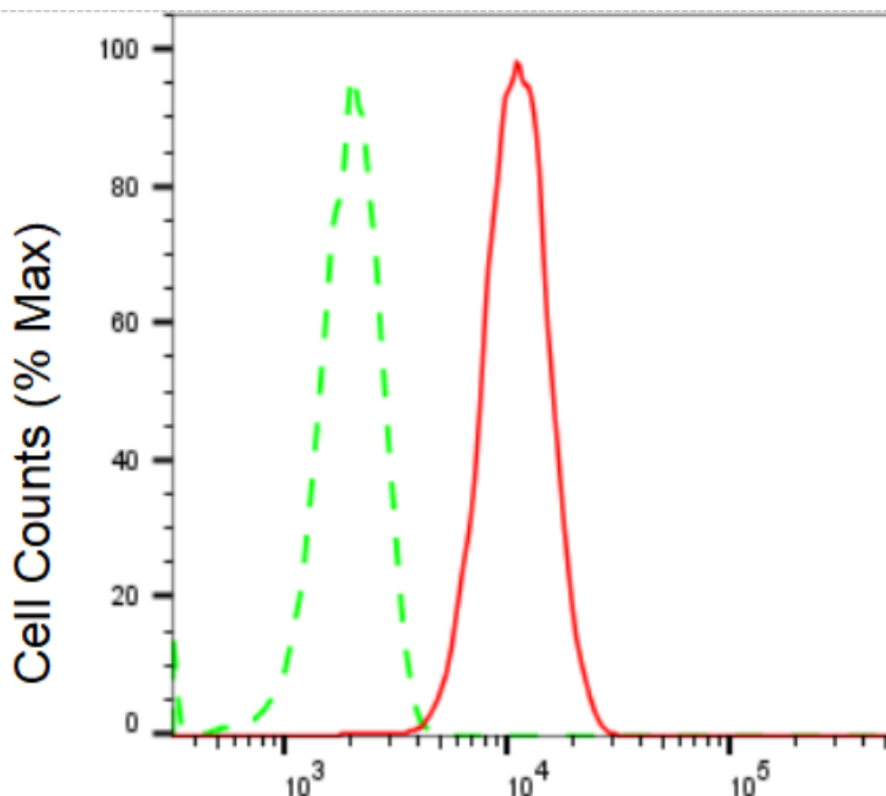
WWW.GENUINBIOTECH.COM

KD-Validated Anti-Oxysterol binding protein like 1A Recombinant Rabbit Monoclonal

PAGE 2

Note: This product is for research use only.

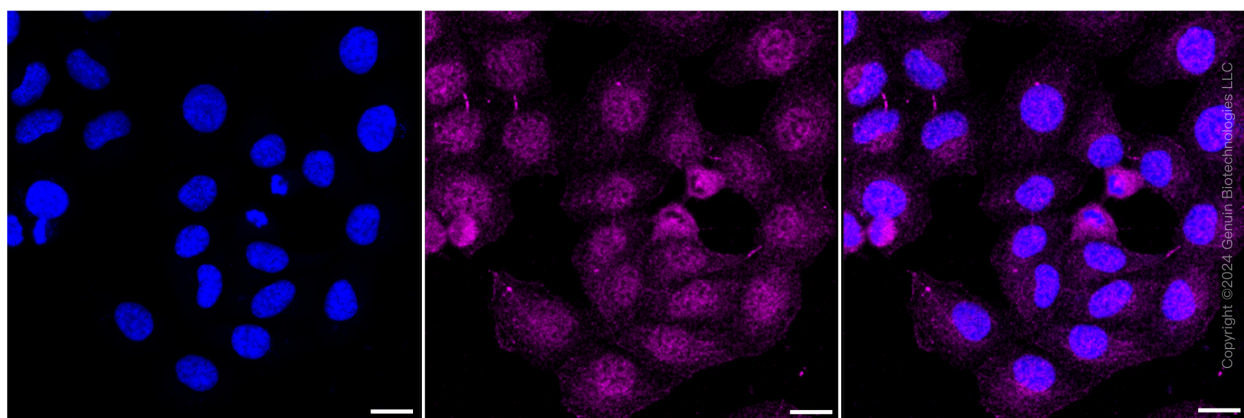
Validation Data



Copyright ©2024 Genuin Biotechnologies LLC

Oxysterol binding protein like 1A-Alexa Fluor® 647

Flow cytometric analysis of Oxysterol binding protein like 1A expression in HT-1080 cells using Oxysterol binding protein like 1A antibody (Cat#61685, 1:2,000). Green, isotype control; red, Oxysterol binding protein like 1A.



Copyright ©2024 Genuin Biotechnologies LLC

Immunocytochemical staining of HT-1080 cells with Oxysterol binding protein like 1A antibody (Cat#61685, 1:1,000). Nuclei were stained blue with DAPI; Oxysterol binding protein like 1A was stained magenta with Alexa Fluor® 647. Images were taken using Leica stellaris 5. Protein

SUPPORT

SUPPORT@GENUINBIOTECH.COM
TEL: +1-540-855-7041

ORDERS

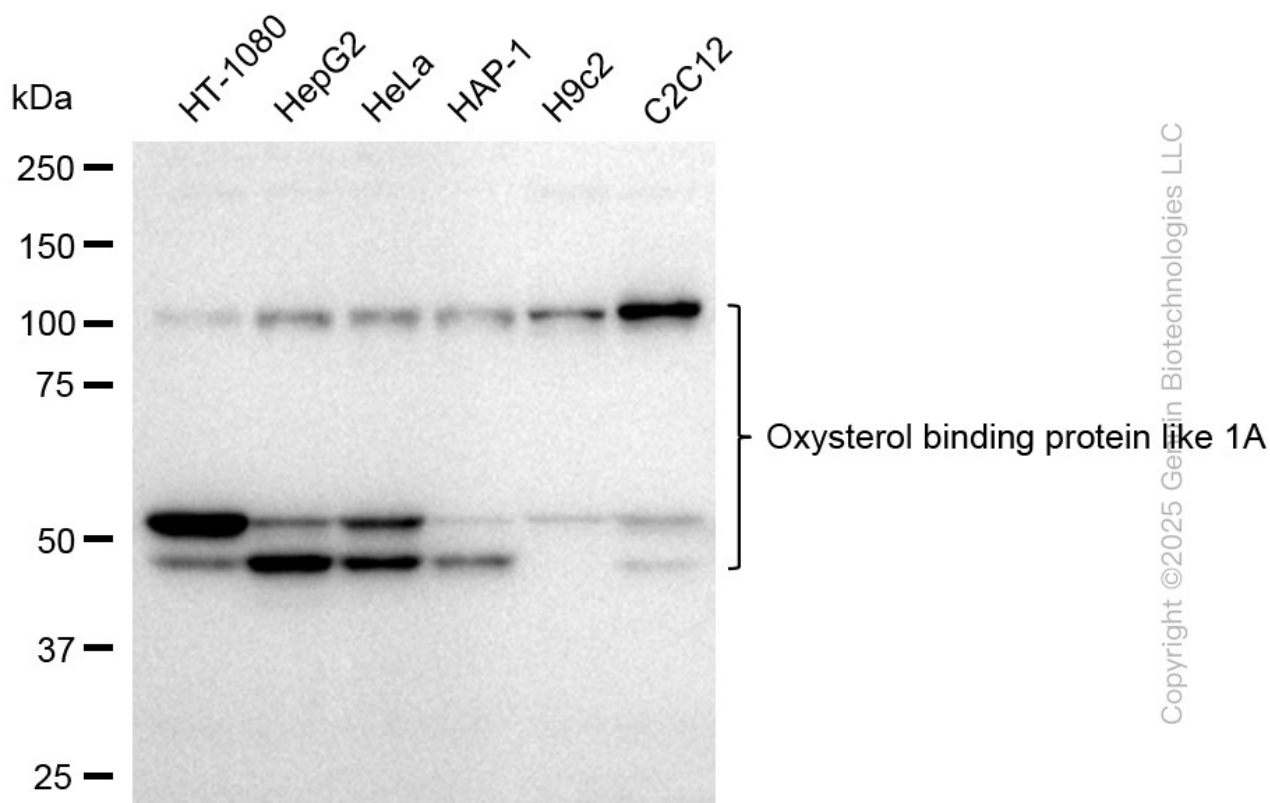
SALES@GENUINBIOTECH.COM
FAX: +1-540-855-7041

WWW.GENUINBIOTECH.COM

KD-Validated Anti-Oxysterol binding protein like 1A Recombinant Rabbit Monoclonal

PAGE 3

abundance based on laser Intensity and smart gain: Medium. Scale bar: 20 μ m.



Western blotting analysis using anti-Oxysterol binding protein like 1A antibody (Cat#61685). Total cell lysates (30 μ g) from various cell lines were loaded and separated by SDS-PAGE. The blot was incubated with anti-Oxysterol binding protein like 1A antibody (Cat#61685, 1:5,000) and HRP-conjugated goat anti-rabbit secondary antibody (Cat#201, 1:20,000) respectively. Image was developed using FeQ™ ECL Substrate Kit (Cat#226).

SUPPORT

SUPPORT@GENUINBIOTECH.COM
TEL: +1-540-855-7041

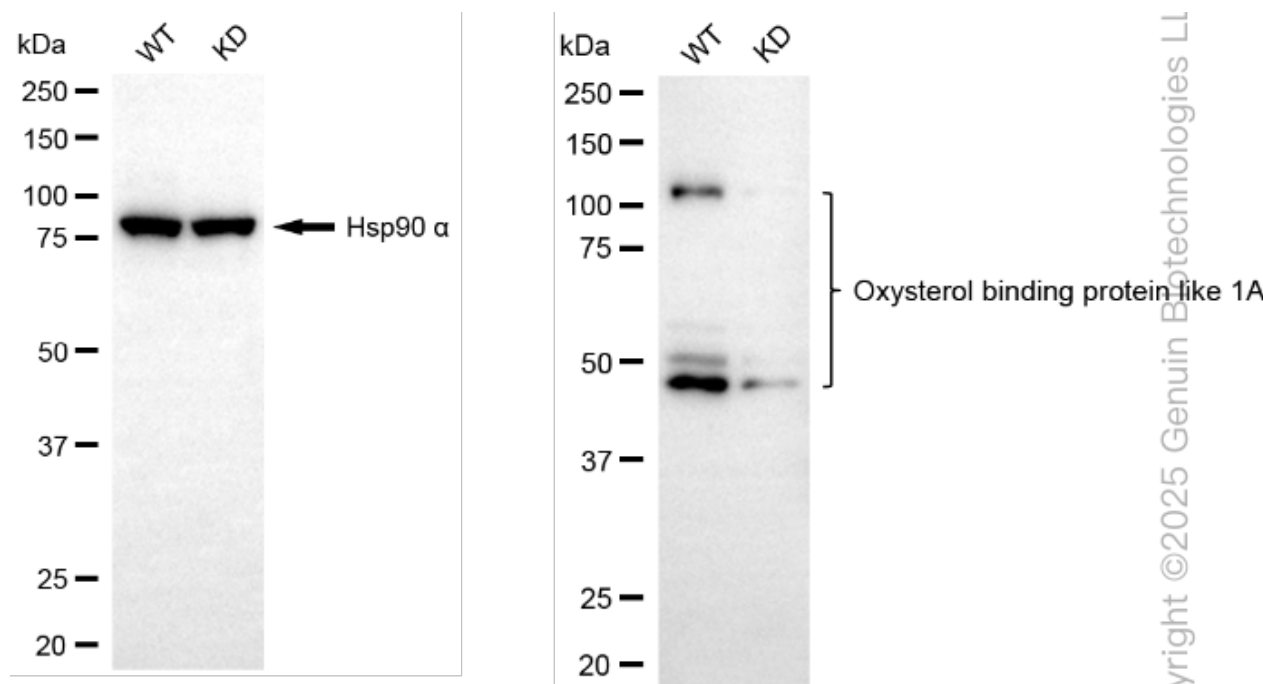
ORDERS

SALES@GENUINBIOTECH.COM
FAX: +1-540-855-7041

WWW.GENUINBIOTECH.COM

KD-Validated Anti-Oxysterol binding protein like 1A Recombinant Rabbit Monoclonal

PAGE 4



Western blotting analysis using anti-Oxysterol binding protein like 1A antibody (Cat#61685). Oxysterol binding protein like 1A expression in wild type (WT) and Oxysterol binding protein like 1A shRNA knockdown (KD) HeLa cells with 30 µg of total cell lysates. Hsp90 α serves as a loading control. The blot was incubated with anti-Oxysterol binding protein like 1A antibody (Cat#61685, 1:5,000) and HRP-conjugated goat anti-rabbit secondary antibody (Cat#201, 1:20,000) respectively. Image was developed using FeQ™ ECL Substrate Kit (Cat#226).

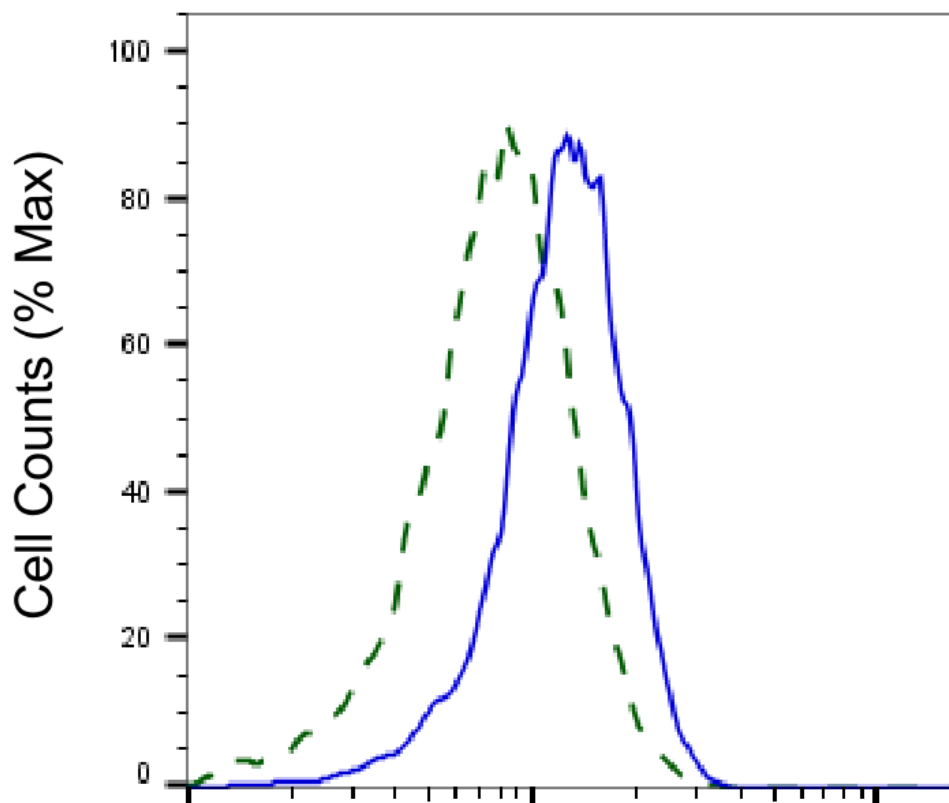
SUPPORT

SUPPORT@GENUINBIOTECH.COM
TEL: +1-540-855-7041

ORDERS

SALES@GENUINBIOTECH.COM
FAX: +1-540-855-7041

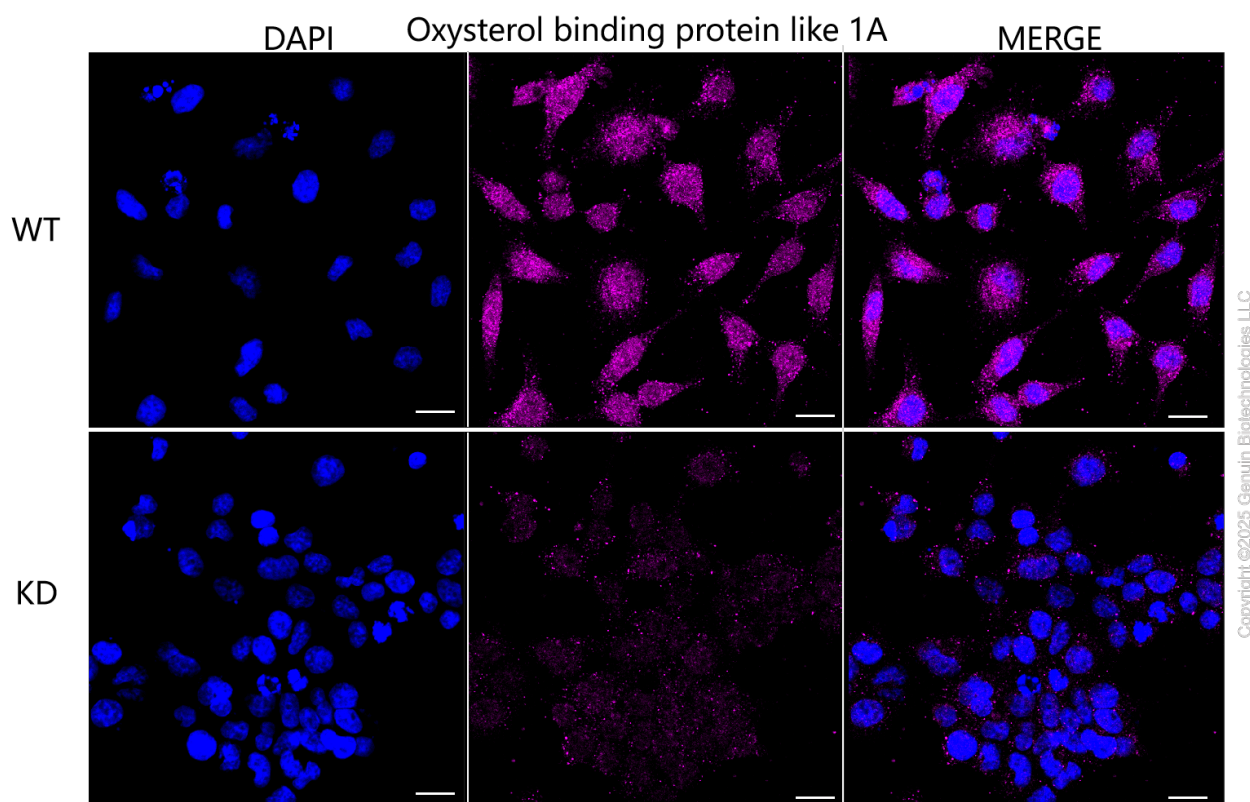
WWW.GENUINBIOTECH.COM



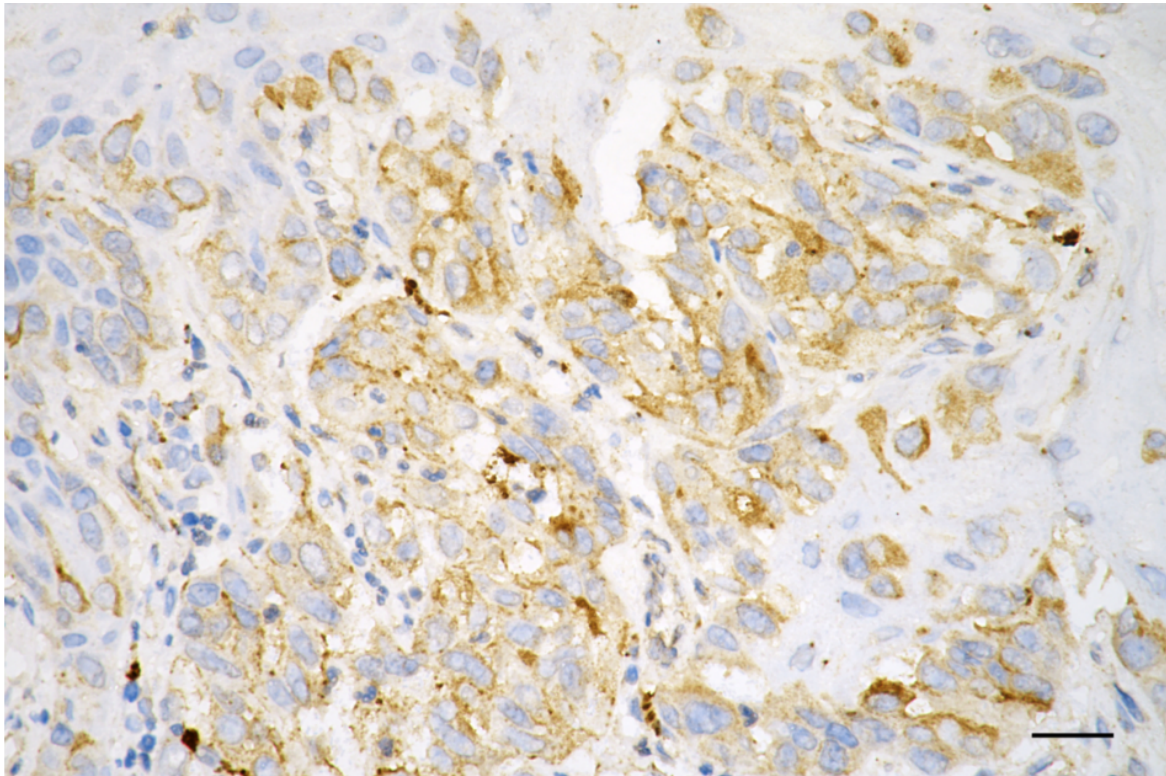
Copyright ©2025 Genuin Biotechnologies LLC

Oxysterol binding protein like 1A-Alexa Fluor® 647

Validation of Oxysterol binding protein like 1A knockdown using flow cytometry. Wild-type(WT, Blue) and knockdown(KD, Green) HeLa cells were stained with anti-Oxysterol binding protein like 1A antibody (Cat#61685, 1:2,000) and analyzed using BD flow cytometer.



Immunocytochemical staining of HeLa cells using anti-Oxysterol binding protein like 1A antibody (Cat#61685, 1:1,000), Top panel: wild-type (WT); Bottom panel: Oxysterol binding protein like 1A shRNA knockdown (KD). Nuclei were stained blue with DAPI; Oxysterol binding protein like 1A was stained magenta with Alexa Fluor® 647. Scale bar, 20 μ m. Permeabilization: Triton.



Copyright ©2025 Genuin Biotechnologies LLC

Immunohistochemistry was performed on paraffin-embedded human melanoma using anti-oxysterol binding protein like 1A antibody (Cat#61685, 1:200). Antigen retrieval was done in sodium citrate buffer (pH 6.0). DAB was used for detection, with hematoxylin counterstaining. Images were acquired using a Nikon Ci-L Plus microscope (40× objective). Scale bar: 25 μ m.