

KD-Validated Anti-Phospho-Glycogen synthase 1 (S641) Recombinant Rabbit Monoclonal



Catalog #: 61686

Aliases

GYS1; Glycogen Synthase 1; GSY; GYS; Glycogen [Starch] Synthase, Muscle; Glycogen Synthase 1 (Muscle); EC 2.4.1.11

Background

Gene Name: GYS1

NCBI Gene Entry: [2997](#)

UniProt Entry: [P13807](#)

Application Information

Molecular Weight: Predicted, 84 kDa, observed, 85 kDa

Clonality: Rabbit monoclonal antibody

Clone ID: 23GB4070

Species Reactivity: Human, mouse, rat

Applications Tested: Western blotting (WB), flow cytometry (FCM), immunocytochemistry (IC)

Immunogen

A synthesized peptide derived from human Phospho-Glycogen synthase 1 (S641)

Isotype

Rabbit IgG

Storage Buffer

Supplied in PBS (pH 7.4) containing 50% glycerol, and 0.02% sodium azide.

Storage

Store at -20 °C for one year.

Recommended Dilutions

Western Blotting (WB): 1:1,000-1:5,000

Flow Cytometry (FCM): 1:2,000

Immunocytochemistry (IC): 1:100-1:1,000

Note: This product is for research use only.

Validation Data

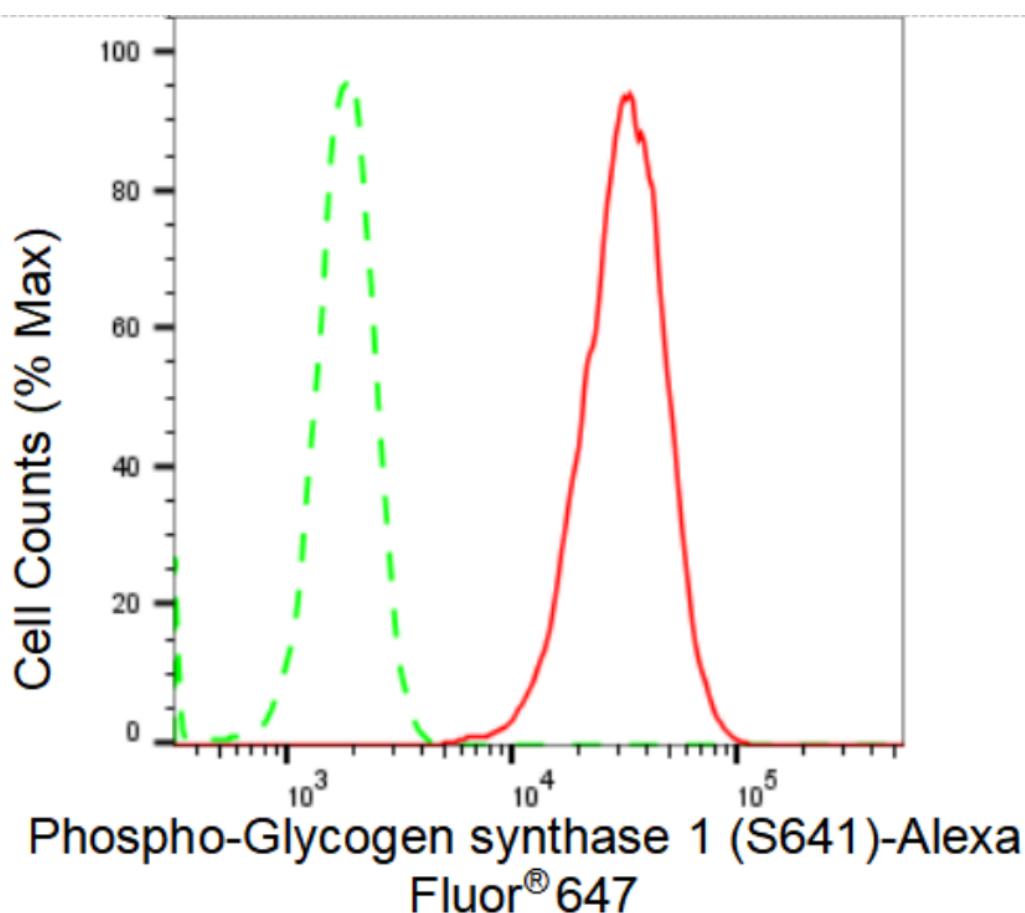
SUPPORT

SUPPORT@GENUINBIOTECH.COM
TEL: +1-540-855-7041

ORDERS

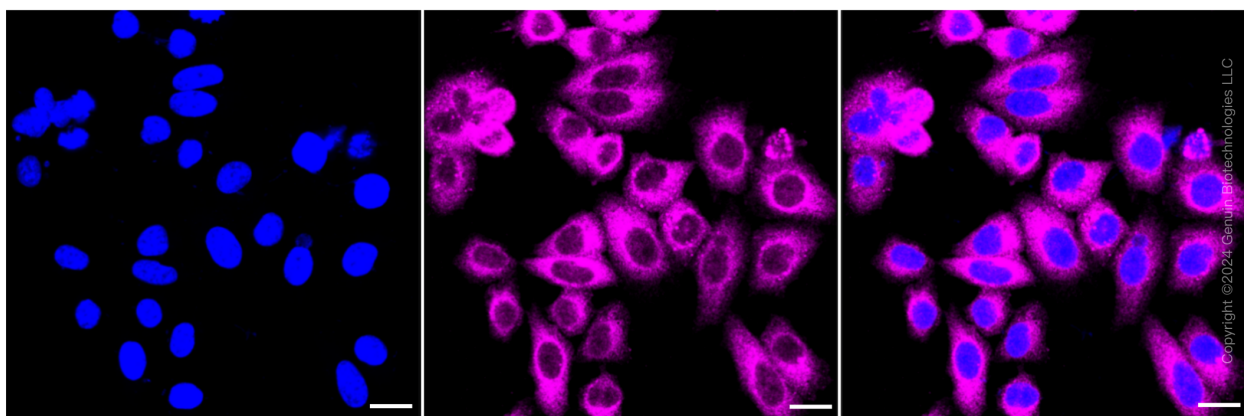
SALES@GENUINBIOTECH.COM
FAX: +1-540-855-7041

WWW.GENUINBIOTECH.COM



Copyright ©2024 Genuin Biotechnologies LLC

Flow cytometric analysis of Phospho-Glycogen synthase 1 (S641) expression in HepG2 cells using Phospho-Glycogen synthase 1 (S641) antibody (Cat#61686, 1:2,000). Green, isotype control; red, Phospho-Glycogen synthase 1 (S641).



Immunocytochemical staining of HepG2 cells with Phospho-Glycogen synthase 1 (S641) antibody (Cat#61686, 1:1,000). Nuclei were stained blue with DAPI; Phospho-Glycogen synthase 1 (S641) was stained magenta with Alexa Fluor® 647. Images were taken using Leica stellaris 5. Protein abundance based on laser Intensity and smart gain: Medium. Scale bar: 20 μ m.

SUPPORT

SUPPORT@GENUINBIOTECH.COM
TEL: +1-540-855-7041

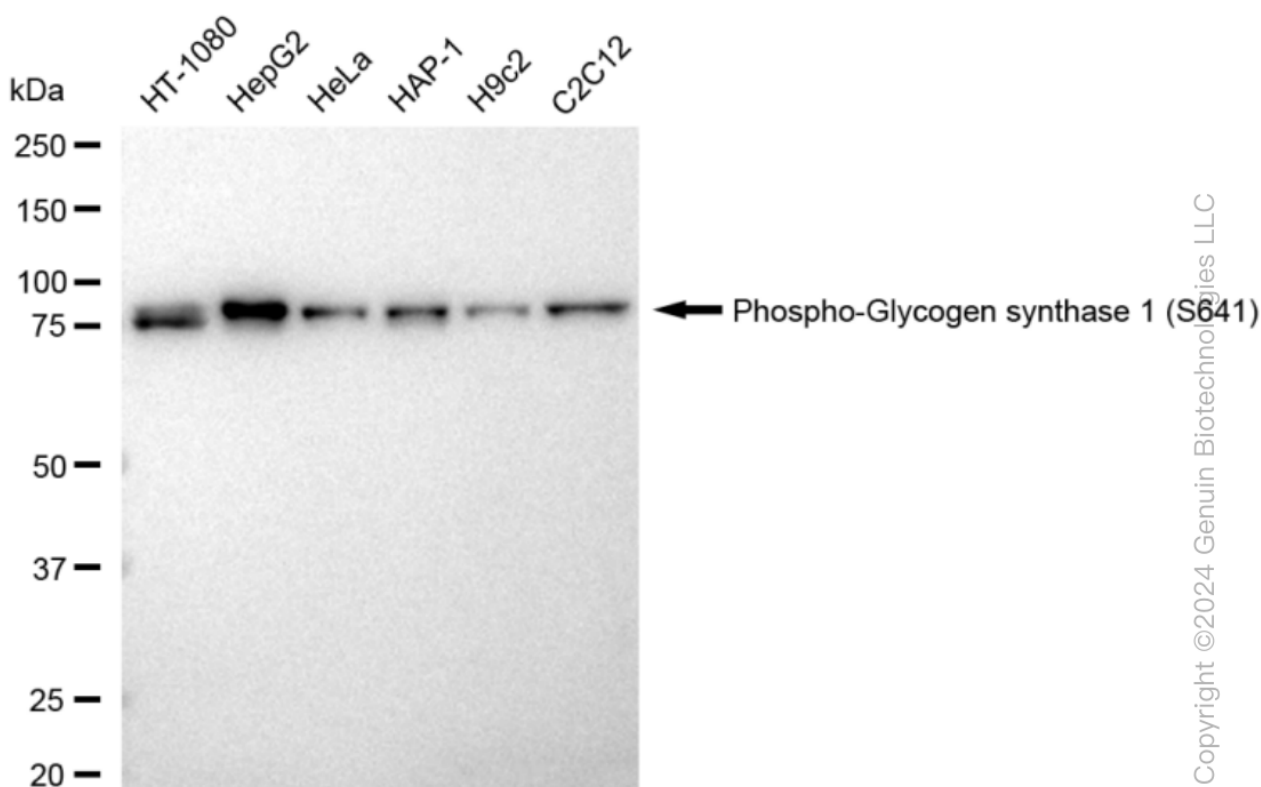
ORDERS

SALES@GENUINBIOTECH.COM
FAX: +1-540-855-7041

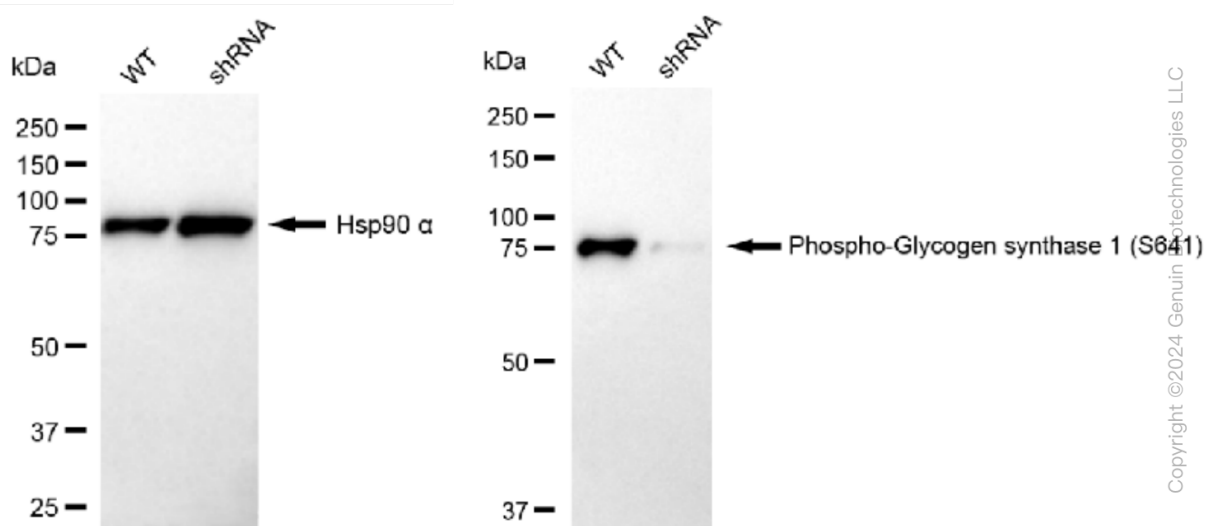
WWW.GENUINBIOTECH.COM

KD-Validated Anti-Phospho-Glycogen synthase 1 (S641) Recombinant Rabbit Monoclonal

PAGE 3



Western blotting analysis using anti-Phospho-Glycogen synthase 1 (S641) antibody (Cat#61686). Total cell lysates (30 μ g) from various cell lines were loaded and separated by SDS-PAGE. The blot was incubated with anti-Phospho-Glycogen synthase 1 (S641) antibody (Cat#61686, 1:5,000) and HRP-conjugated goat anti-rabbit secondary antibody (Cat#201, 1:20,000) respectively. Image was developed using FeQ™ ECL Substrate Kit (Cat#226).



Western blotting analysis using anti-Phospho-Glycogen synthase 1 (S641) antibody (Cat#61686). Phospho-Glycogen synthase 1 (S641) expression in wild type (WT) and Phospho-Glycogen synthase 1 (S641) knockdown (shRNA) cells.

SUPPORT

SUPPORT@GENUINBIOTECH.COM
TEL: +1-540-855-7041

ORDERS

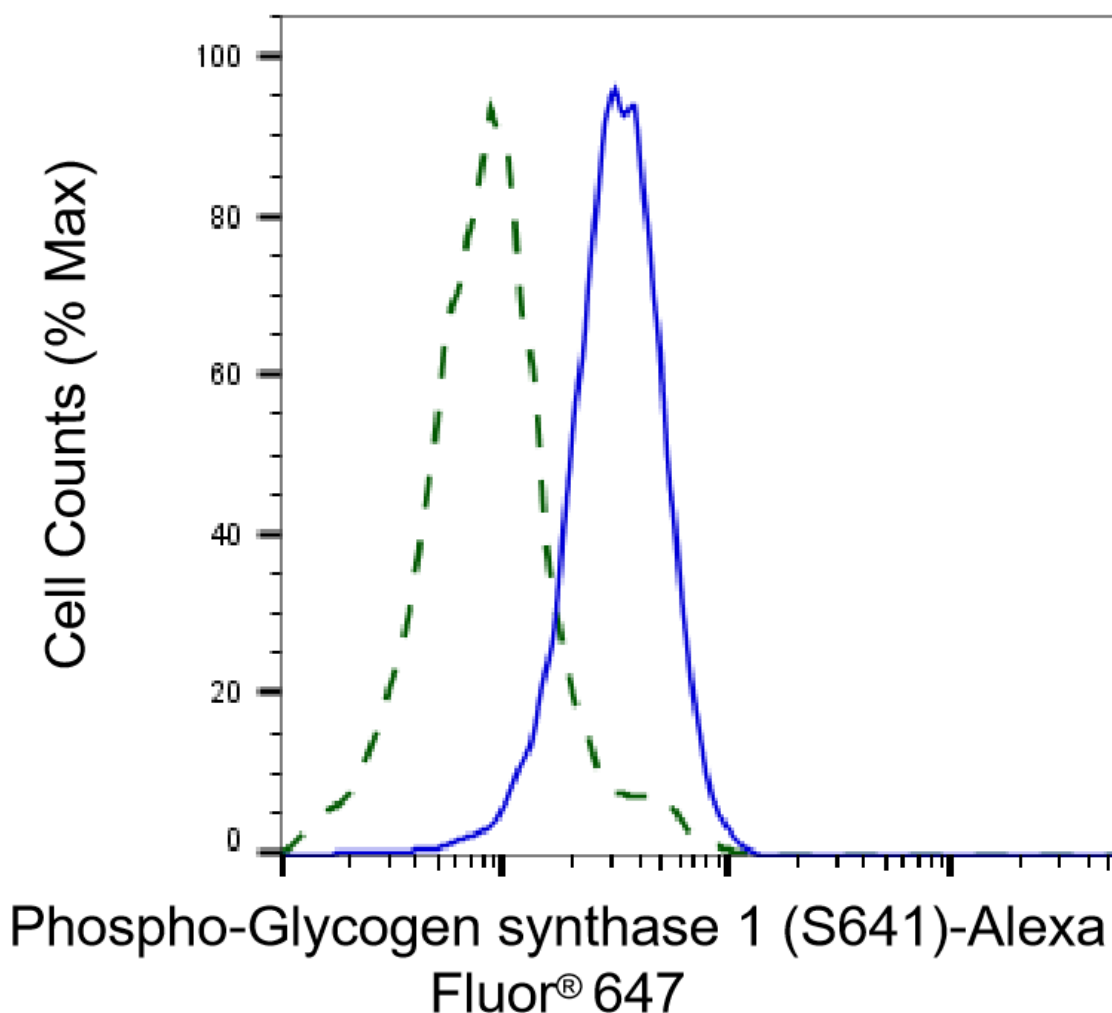
SALES@GENUINBIOTECH.COM
FAX: +1-540-855-7041

WWW.GENUINBIOTECH.COM

KD-Validated Anti-Phospho-Glycogen synthase 1 (S641) Recombinant Rabbit Monoclonal

PAGE 4

synthase 1 (S641) shRNA knockdown (KD) HeLa cells with 30 µg of total cell lysates. β -Tubulin serves as a loading control. The blot was incubated with anti-Phospho-Glycogen synthase 1 (S641) antibody (Cat#61686, 1:5,000) and HRP-conjugated goat anti-rabbit secondary antibody (Cat#201, 1:20,000) respectively. Image was developed using FeQ™ ECL Substrate Kit (Cat#226).



Copyright ©2025 Genuin Biotechnologies LLC

Validation of Glycogen synthase 1 knockdown using flow cytometry. Wild-type(WT, Blue) and knockdown(KD, Green) HeLa cells were stained with anti-Phospho-Glycogen synthase 1 (S641) antibody (Cat#61686, 1:2,000) and analyzed using BD flow cytometer.

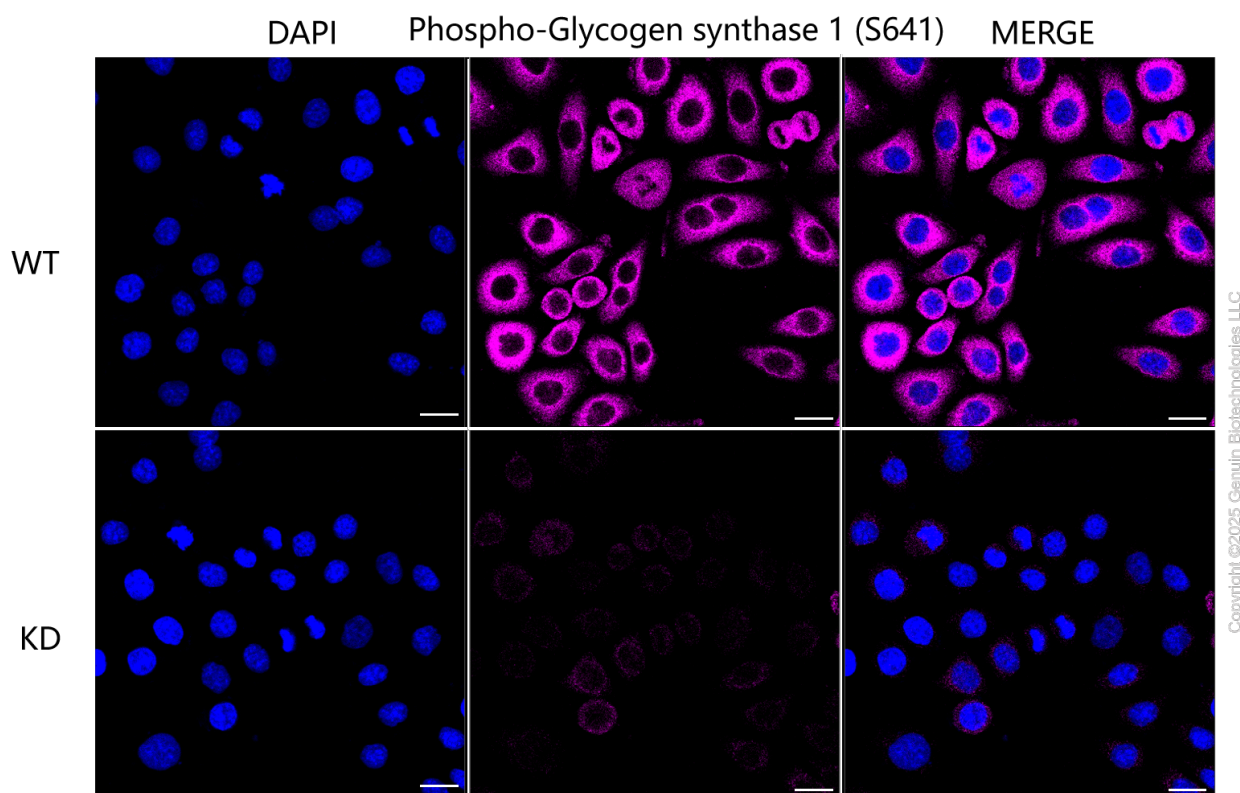
SUPPORT

SUPPORT@GENUINBIOTECH.COM
TEL: +1-540-855-7041

ORDERS

SALES@GENUINBIOTECH.COM
FAX: +1-540-855-7041

WWW.GENUINBIOTECH.COM



Immunocytochemical staining of HeLa cells using anti-Phospho-Glycogen synthase 1 (S641) antibody (Cat#61686, 1:1,000), Top panel: wild-type (WT); Bottom panel: Phospho-Glycogen synthase 1 (S641) shRNA knockdown (KD). Nuclei were stained blue with DAPI; Phospho-Glycogen synthase 1 (S641) was stained magenta with Alexa Fluor® 647. Scale bar, 20 μ m. Permeabilization: Triton.