

KD-Validated Anti-Phosphoglucomutase 1 Recombinant Rabbit Monoclonal Antibody



Catalog #: 61687

Aliases

PGM1; Phosphoglucomutase 1; Glucose Phosphomutase 1; Phosphoglucomutase-1; EC 5.4.2.2;
PGM 1; EC 5.4.2; CDG1T; GSD14

Background

Gene Name: PGM1

NCBI Gene Entry: [5236](#)

UniProt Entry: [P36871](#)

Application Information

Molecular Weight: Predicted, 61 kDa; observed, 61 kDa

Clonality: Rabbit monoclonal antibody

Clone ID: 25GB3325

Species Reactivity: Human, mouse, rat

Applications Tested: Western blotting (WB), flow cytometry (FCM), immunocytochemistry (IC)

Immunogen

A synthesized peptide derived from human PGM1

Isotype

Rabbit IgG

Storage Buffer

Supplied in PBS (pH 7.4) containing 50% glycerol, and 0.02% sodium azide.

Storage

Store at -20 °C for one year.

Recommended Dilutions

Western blotting (WB): 1:1,000-1:5,000

Flow Cytometry (FCM): 1:2,000

Immunocytochemistry (IC): 1:100-1:1,000

Note: This product is for research use only.

Validation Data

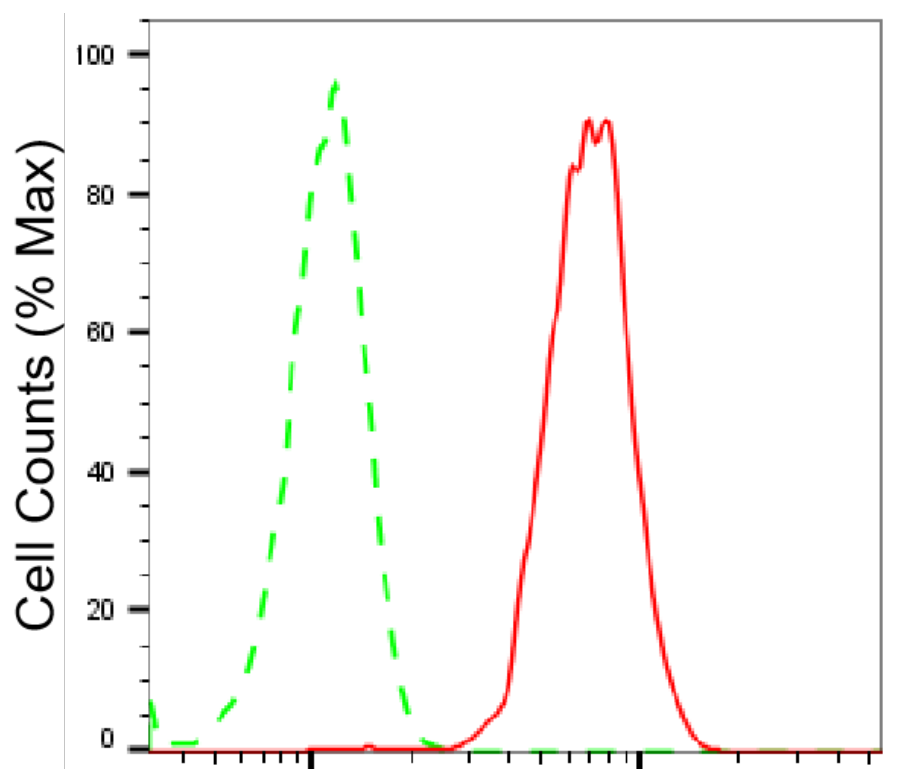
SUPPORT

SUPPORT@GENUINBIOTECH.COM
TEL: +1-540-855-7041

ORDERS

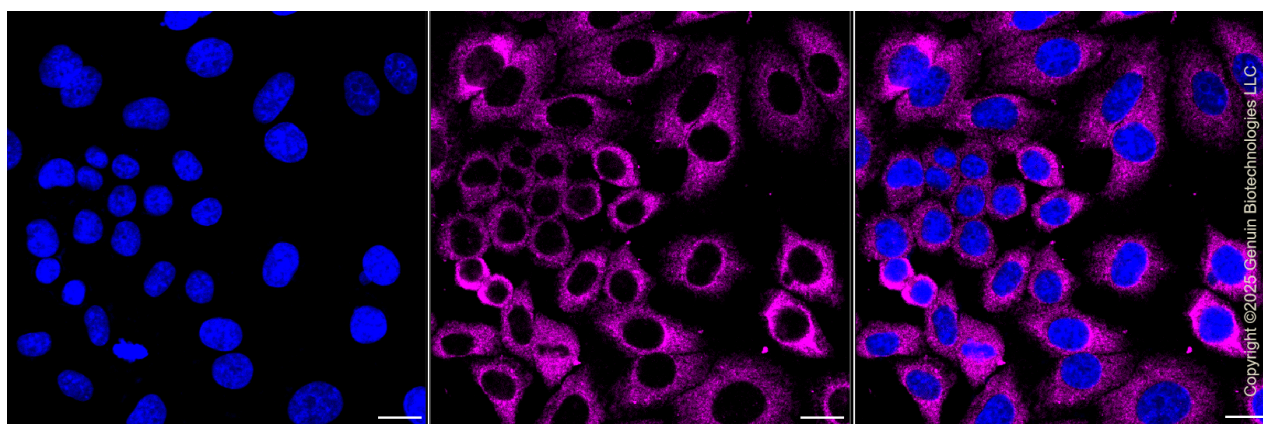
SALES@GENUINBIOTECH.COM
FAX: +1-540-855-7041

WWW.GENUINBIOTECH.COM



Phosphoglucomutase 1-Alexa Fluor® 647

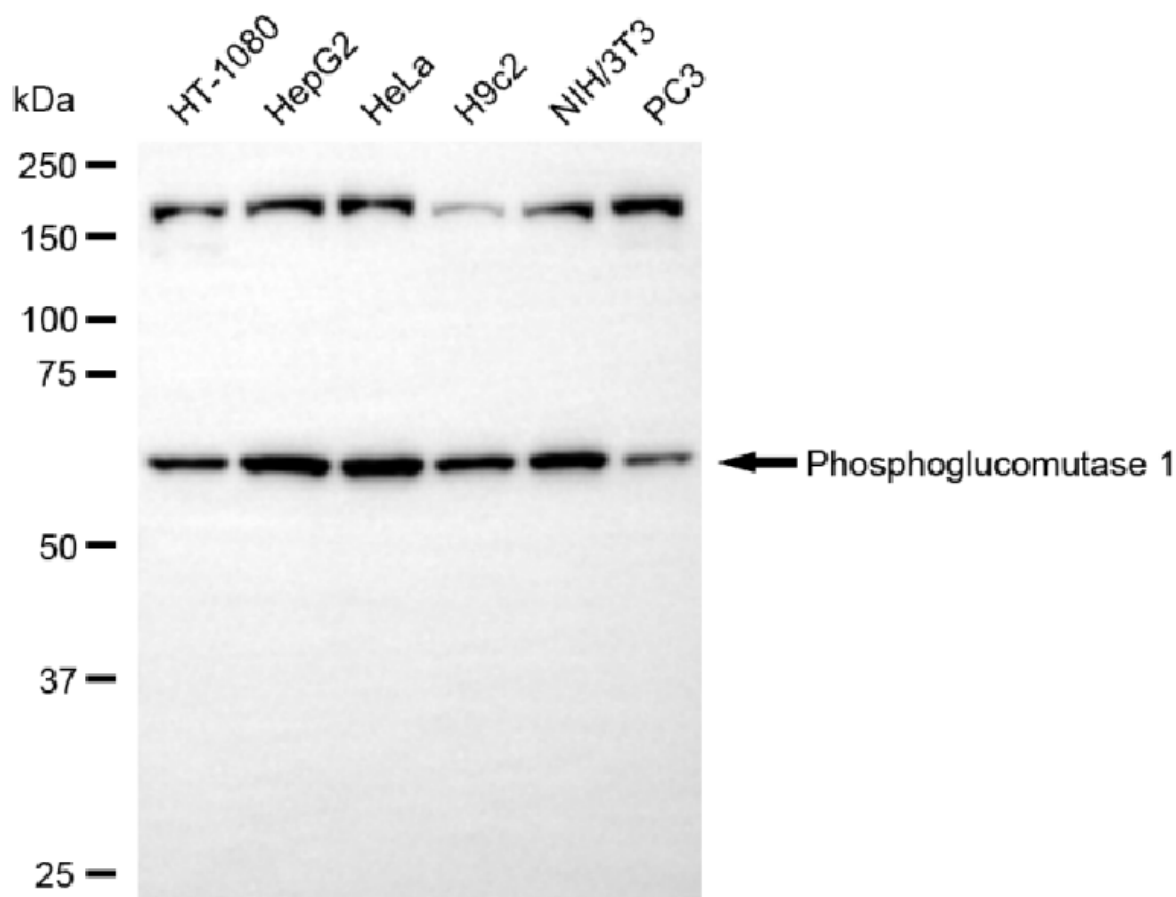
Flow cytometric analysis of Phosphoglucomutase 1 expression in HepG2 cells using anti-Phosphoglucomutase 1 antibody (Cat#61687, 1:2,000). Green, isotype control; red, Phosphoglucomutase 1.



Immunocytochemical staining of HepG2 cells with Phosphoglucomutase 1 antibody (Cat#61687, 1:1,000). Nuclei were stained blue with DAPI; Phosphoglucomutase 1 was stained magenta with Alexa Fluor® 647. Images were taken using Leica stellaris 5. Protein abundance based on laser Intensity and smart gain: Medium. Scale bar, 20 µm.

KD-Validated Anti-Phosphoglucomutase 1 Recombinant Rabbit Monoclonal Antibody

PAGE 3



Copyright ©2025 Genuin Biotechnologies LLC

Western blotting analysis using anti-phosphoglucomutase 1 antibody (Cat#61687). Total cell lysates (30 μ g) from various cell lines were loaded and separated by SDS-PAGE. The blot was incubated with anti-phosphoglucomutase 1 antibody (Cat#61687, 1:5,000) and HRP-conjugated goat anti-rabbit secondary antibody (Cat#201, 1:20,000) respectively. Image was developed using NaQ™ ECL Substrate Kit (Cat#716).

SUPPORT

SUPPORT@GENUINBIOTECH.COM
TEL: +1-540-855-7041

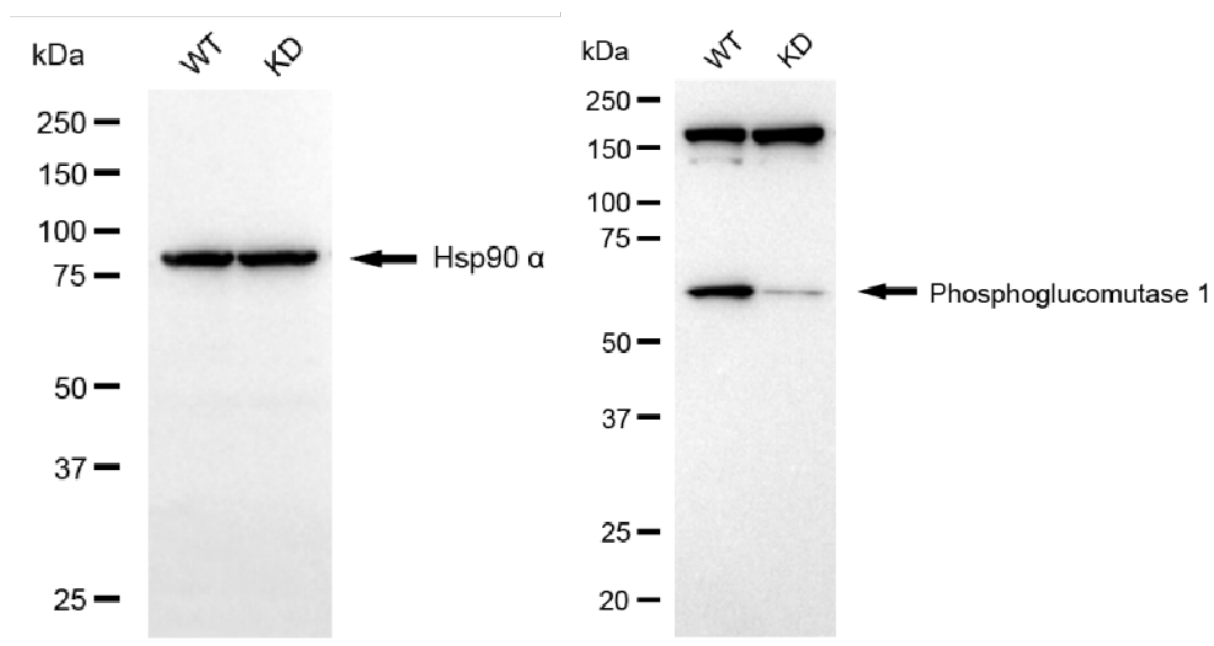
ORDERS

SALES@GENUINBIOTECH.COM
FAX: +1-540-855-7041

WWW.GENUINBIOTECH.COM

KD-Validated Anti-Phosphoglucomutase 1 Recombinant Rabbit Monoclonal Antibody

PAGE 4



Copyright ©2025 Genuin Biotechnologies LLC

Western blotting analysis using anti-phosphoglucomutase 1 antibody (Cat#61687). Phosphoglucomutase 1 expression in wild type (WT) and phosphoglucomutase 1 (PGM1) knockdown (KD) HSHC cells with 20 µg of total cell lysates. Hsp90 α serves as a loading control. The blot was incubated with anti-phosphoglucomutase 1 antibody (Cat#61687, 1:5,000) and HRP-conjugated goat anti-rabbit secondary antibody (Cat#201, 1:20,000) respectively. Image was developed using NaQ™ ECL Substrate Kit (Cat#716).

SUPPORT

SUPPORT@GENUINBIOTECH.COM
TEL: +1-540-855-7041

ORDERS

SALES@GENUINBIOTECH.COM
FAX: +1-540-855-7041

WWW.GENUINBIOTECH.COM