

KD-Validated Anti-Phospho-Src (Y419) Recombinant Rabbit Monoclonal Antibody



Catalog #: 61688

Aliases

SRC; SRC Proto-Oncogene, Non-Receptor Tyrosine Kinase; SRC1; ASV; V-Src Avian Sarcoma (Schmidt-Ruppin A-2) Viral Oncogene Homolog; Proto-Oncogene Tyrosine-Protein Kinase Src; Proto-Oncogene C-Src; EC 2.7.10.2; P60-Src; C-SRC; Protooncogene SRC, Rous Sarcoma; Tyrosine-Protein Kinase SRC-1; Tyrosine Kinase Pp60c-Src; Pp60c-Src; EC 2.7.10; C-Src; THC6

Background

Gene Name: SRC

NCBI Gene Entry: [6714](#)

UniProt Entry: [P12931](#)

Application Information

Molecular Weight: Predicted, 60 kDa, observed, 60 kDa

Clonality: Rabbit monoclonal antibody

Clone ID: 23GB4080

Species Reactivity: Human, mouse, rat

Applications Tested: Western blotting (WB), flow cytometry (FCM)

Immunogen

A synthesized peptide derived from human Phospho-Src (Y419)

Isotype

Rabbit IgG

Storage Buffer

Supplied in PBS (pH 7.4) containing 50% glycerol, and 0.02% sodium azide.

Storage

Store at -20 °C for one year.

Recommended Dilutions

Western Blotting (WB): 1:1,000-1:5,000

Flow Cytometry (FCM): 1:2,000

Note: This product is for research use only.

SUPPORT

SUPPORT@GENUINBIOTECH.COM
TEL: +1-540-855-7041

ORDERS

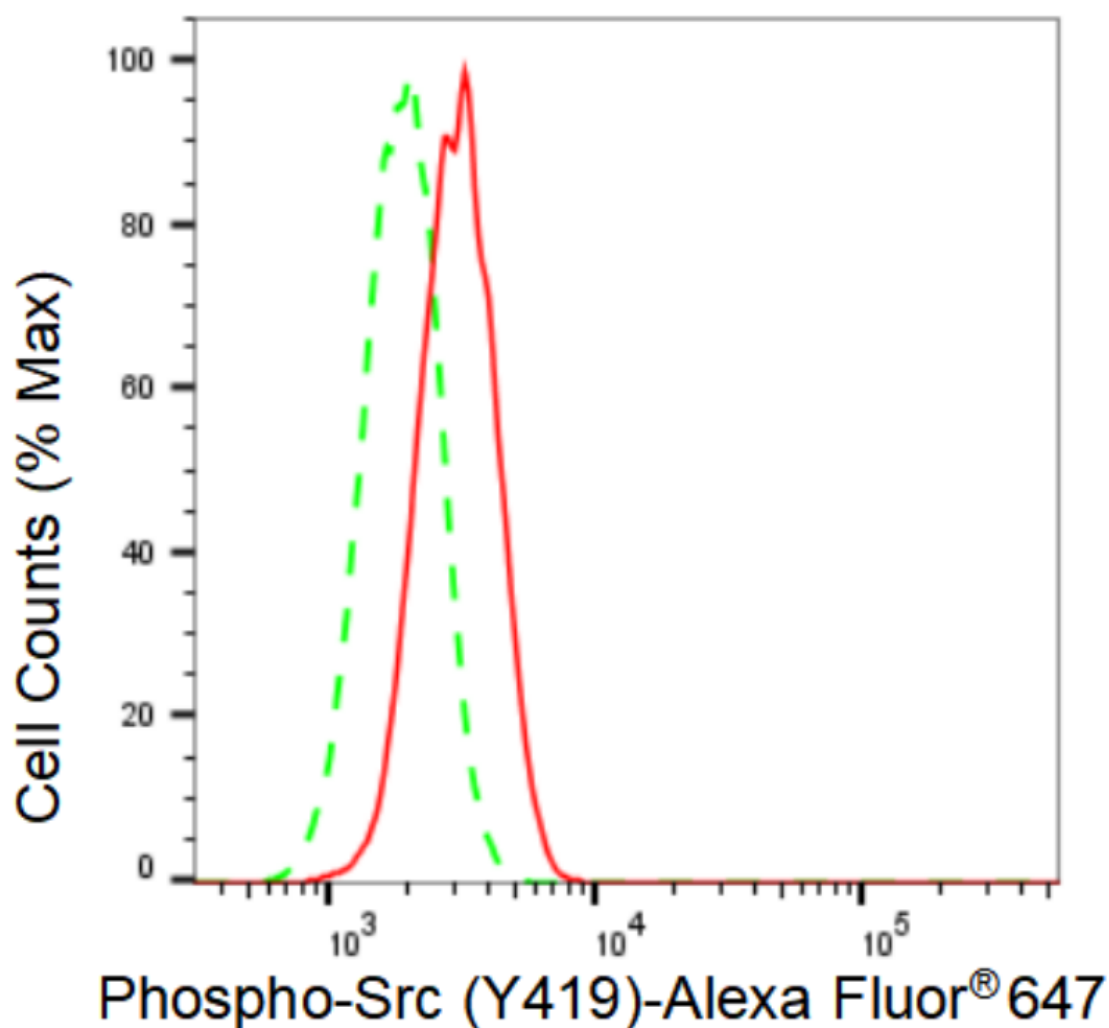
SALES@GENUINBIOTECH.COM
FAX: +1-540-855-7041

WWW.GENUINBIOTECH.COM

KD-Validated Anti-Phospho-Src (Y419) Recombinant Rabbit Monoclonal Antibody

PAGE 2

Validation Data



Copyright ©2024 Genuin Biotechnologies LLC

Flow cytometric analysis of Phospho-Src (Y419) expression in H9c2 cells using Phospho-Src (Y419) antibody (Cat#61688, 1:2,000). Green, isotype control; red, Phospho-Src (Y419).

SUPPORT

SUPPORT@GENUINBIOTECH.COM
TEL: +1-540-855-7041

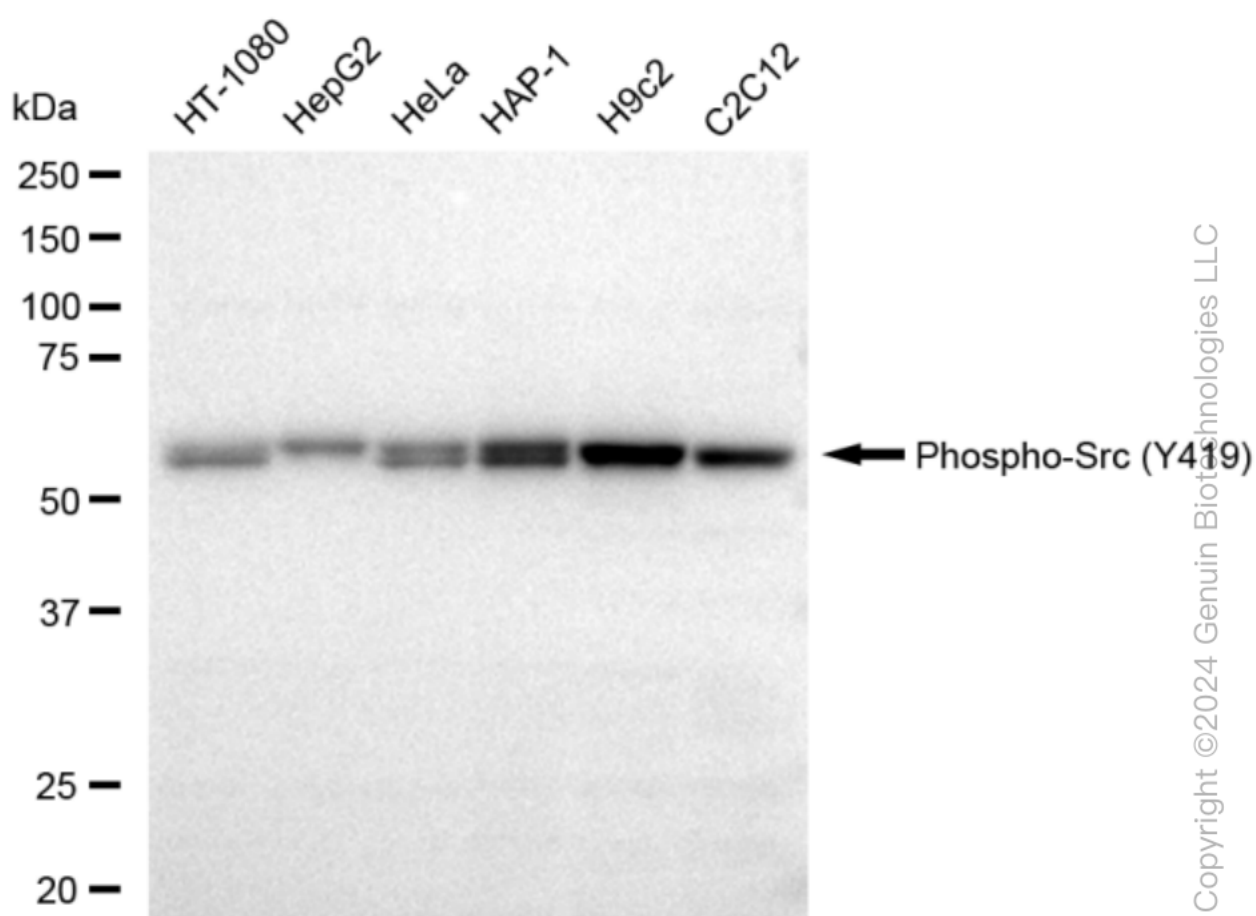
ORDERS

SALES@GENUINBIOTECH.COM
FAX: +1-540-855-7041

WWW.GENUINBIOTECH.COM

KD-Validated Anti-Phospho-Src (Y419) Recombinant Rabbit Monoclonal Antibody

PAGE 3



Western blotting analysis using anti-Phospho-Src (Y419) antibody (Cat#61688). Total cell lysates (30 µg) from various cell lines were loaded and separated by SDS-PAGE. The blot was incubated with anti-Phospho-Src (Y419) antibody (Cat#61688, 1:5,000) and HRP-conjugated goat anti-rabbit secondary antibody (Cat#201, 1:20,000) respectively. Image was developed using FeQ™ ECL Substrate Kit (Cat#226).

SUPPORT

SUPPORT@GENUINBIOTECH.COM
TEL: +1-540-855-7041

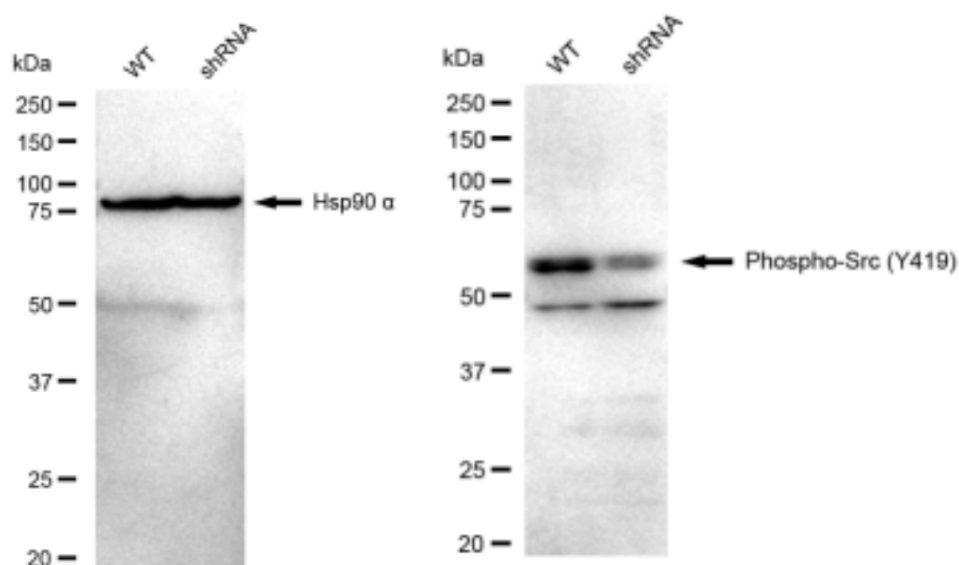
ORDERS

SALES@GENUINBIOTECH.COM
FAX: +1-540-855-7041

WWW.GENUINBIOTECH.COM

KD-Validated Anti-Phospho-Src (Y419) Recombinant Rabbit Monoclonal Antibody

PAGE 4



Copyright ©2024 Genuin Biotechnologies LLC

Western blotting analysis using anti-Phospho-Src (Y419) antibody (Cat#61688). Phospho-Src (Y419) expression in wild type (WT) and Phospho-Src (Y419) shRNA knockdown (KD) HT-1080 cells with 30 µg of total cell lysates. Hsp90 α serves as a loading control. The blot was incubated with anti-Phospho-Src (Y419) antibody (Cat#61688, 1:5,000) and HRP-conjugated goat anti-rabbit secondary antibody (Cat#201, 1:20,000) respectively. Image was developed using FeQ™ ECL Substrate Kit (Cat#226).

SUPPORT

SUPPORT@GENUINBIOTECH.COM
TEL: +1-540-855-7041

ORDERS

SALES@GENUINBIOTECH.COM
FAX: +1-540-855-7041

WWW.GENUINBIOTECH.COM