

# KD-Validated Anti-Regulator Of Chromosome Condensation 1 Recombinant Rabbit



**Catalog #: 61694**

## Aliases

RCC1; Regulator Of Chromosome Condensation 1; CHC1; Regulator Of Chromosome Condensation; Cell Cycle Regulatory Protein; Guanine Nucleotide-Releasing Protein; Chromosome Condensation Protein 1; Chromosome Condensation 1; RCC1-I

## Background

Gene Name: RCC1

NCBI Gene Entry: [1104](#)

UniProt Entry: [P18754](#)

## Application Information

Molecular Weight: Predicted, 45 kDa, observed, 48 kDa

Clonality: Rabbit monoclonal antibody

Clone ID: 25GB3350

Species Reactivity: Human, mouse, rat

Applications Tested: Western blotting (WB), flow cytometry (FCM)

## Immunogen

A synthesized peptide derived from human RCC1

## Isotype

Rabbit IgG

## Storage Buffer

Supplied in PBS (pH 7.4) containing 50% glycerol, and 0.02% sodium azide.

## Storage

Store at -20 °C for one year.

## Recommended Dilutions

Western blotting (WB): 1:1,000-1:5,000

Flow Cytometry (FCM): 1:2,000

**Note:** This product is for research use only.

## Validation Data

---

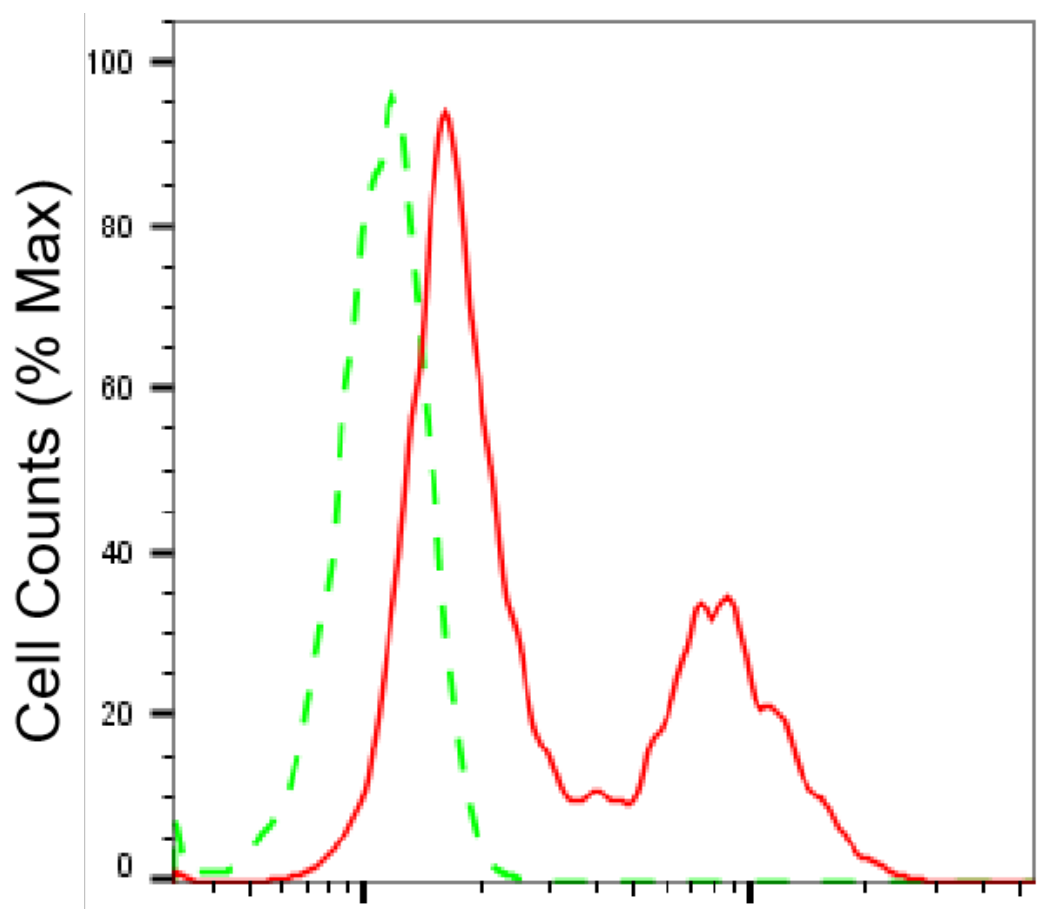
### SUPPORT

SUPPORT@GENUINBIOTECH.COM  
TEL: +1-540-855-7041

### ORDERS

SALES@GENUINBIOTECH.COM  
FAX: +1-540-855-7041

[WWW.GENUINBIOTECH.COM](http://WWW.GENUINBIOTECH.COM)



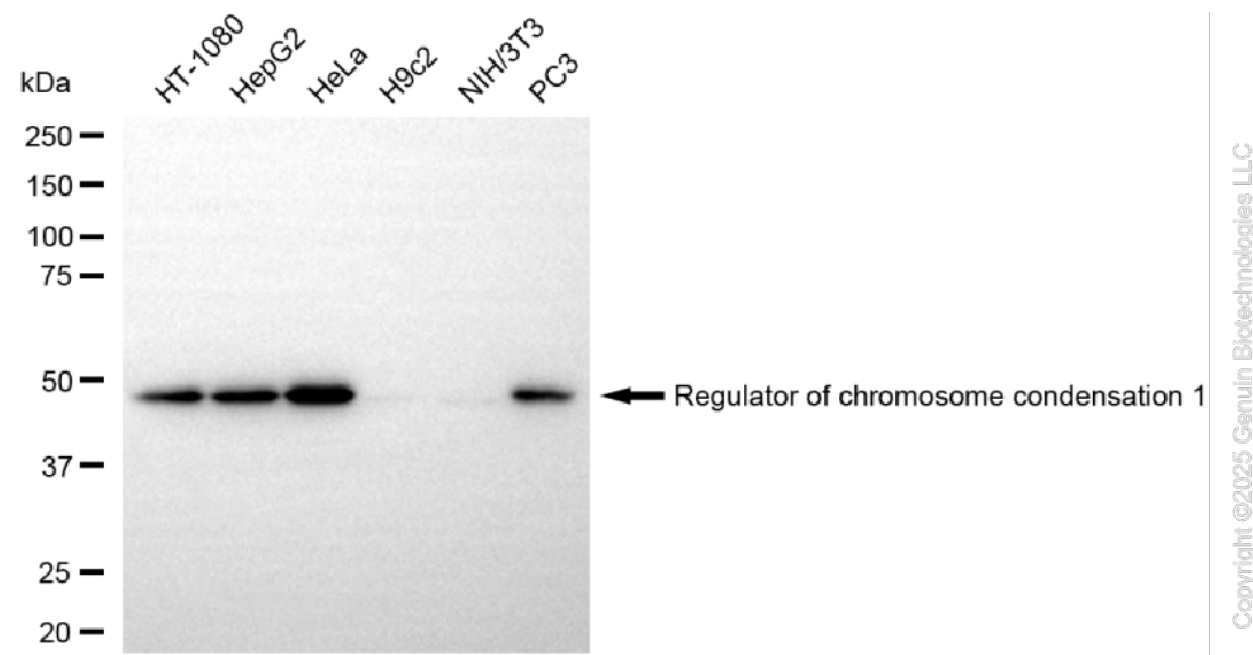
Copyright ©2025 Genuin Biotechnologies LLC

## Regulator of chromosome condensation 1- Alexa Fluor® 647

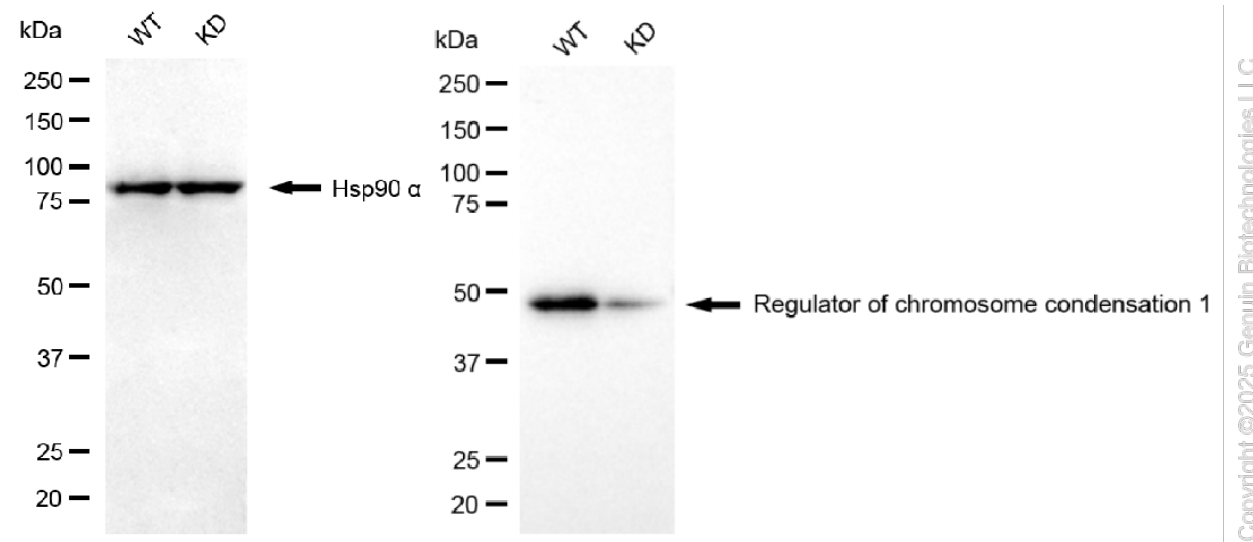
Flow cytometric analysis of Regulator of chromosome condensation 1 expression in HepG2 cells using anti-Regulator of chromosome condensation 1 antibody (Cat#61694, 1:2,000). Green, isotype control; red, Regulator of chromosome condensation 1.

## KD-Validated Anti-Regulator Of Chromosome Condensation 1 Recombinant Rabbit

PAGE 3



Western blotting analysis using anti-regulator of chromosome condensation 1 antibody (Cat#61694). Total cell lysates (30  $\mu$ g) from various cell lines were loaded and separated by SDS-PAGE. The blot was incubated with anti-regulator of chromosome condensation 1 antibody (Cat#61694, 1:5,000) and HRP-conjugated goat anti rabbit secondary antibody (Cat#201, 1:20,000) respectively. Image was developed using NaQ™ ECL Substrate Kit (Cat#716).



Western blotting analysis using anti-regulator of chromosome condensation 1 antibody (Cat#61694). Regulator of chromosome condensation 1 expression in wild type (WT) and regulator of chromosome condensation 1 (RCC1) knockdown (KD) HSHC cells with 20  $\mu$ g of total cell lysates. Hsp90  $\alpha$  serves as a loading control. The blot was incubated with anti-regulator of chromosome condensation 1 antibody (Cat#61694, 1:5,000) and HRP-conjugated goat anti-rabbit secondary antibody (Cat#201, 1:20,000) respectively. Image was developed using FeQ™

### SUPPORT

SUPPORT@GENUINBIOTECH.COM  
TEL: +1-540-855-7041

### ORDERS

SALES@GENUINBIOTECH.COM  
FAX: +1-540-855-7041

WWW.GENUINBIOTECH.COM

# **KD-Validated Anti-Regulator Of Chromosome Condensation 1 Recombinant Rabbit**

PAGE 4

ECL Substrate Kit (Cat#226).

---

## **SUPPORT**

SUPPORT@GENUINBIOTECH.COM  
TEL: +1-540-855-7041

## **ORDERS**

SALES@GENUINBIOTECH.COM  
FAX:+1-540-855-7041

**WWW.GENUINBIOTECH.COM**