

KD-Validated Anti-RAD50 Recombinant Rabbit Monoclonal Antibody



Catalog #: 61695

Aliases

RAD50; RAD50 Double Strand Break Repair Protein; RAD50 Homolog, Double Strand Break Repair Protein; DNA Repair Protein RAD50; RAD50-2; HRad50; HRAD50; RAD50 (S. Cerevisiae) Homolog; RAD50 Homolog (S. Cerevisiae); EC 3.6.3.27; EC 3.6.1.15; EC 3.6.-.-; EC 3.6.3; RAD502; NBSLD

Background

Gene Name: RAD50

NCBI Gene Entry: [10111](#)

UniProt Entry: [Q92878](#)

Application Information

Molecular Weight: Predicted, 154 kDa, observed, 154 kDa

Clonality: Rabbit monoclonal antibody

Clone ID: 23GB4115

Species Reactivity: Human, mouse, rat

Applications Tested: Western blotting (WB), flow cytometry (FCM), immunocytochemistry (IC)

Immunogen

A synthesized peptide derived from human Rad50

Isotype

Rabbit IgG

Storage Buffer

Supplied in PBS (pH 7.4) containing 50% glycerol, and 0.02% sodium azide.

Storage

Store at -20 °C for one year.

Recommended Dilutions

Western Blotting (WB): 1:1,000-1:5,000

Flow Cytometry (FCM): 1:2,000

Immunocytochemistry (IC): 1:100-1:1,000

SUPPORT

SUPPORT@GENUINBIOTECH.COM
TEL: +1-540-855-7041

ORDERS

SALES@GENUINBIOTECH.COM
FAX: +1-540-855-7041

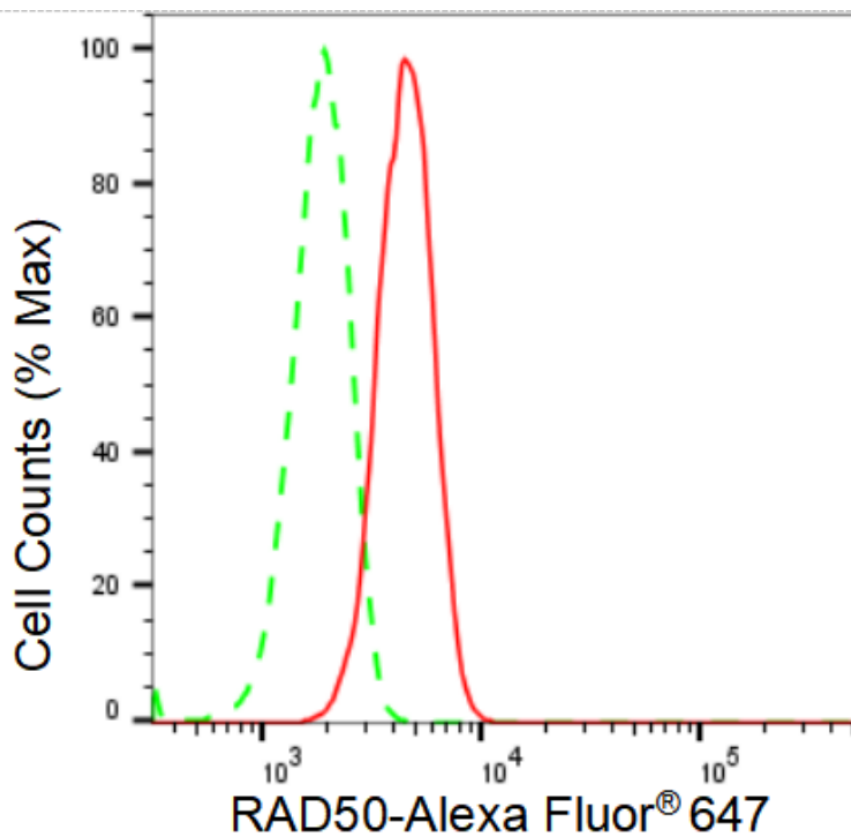
WWW.GENUINBIOTECH.COM

KD-Validated Anti-RAD50 Recombinant Rabbit Monoclonal Antibody

PAGE 2

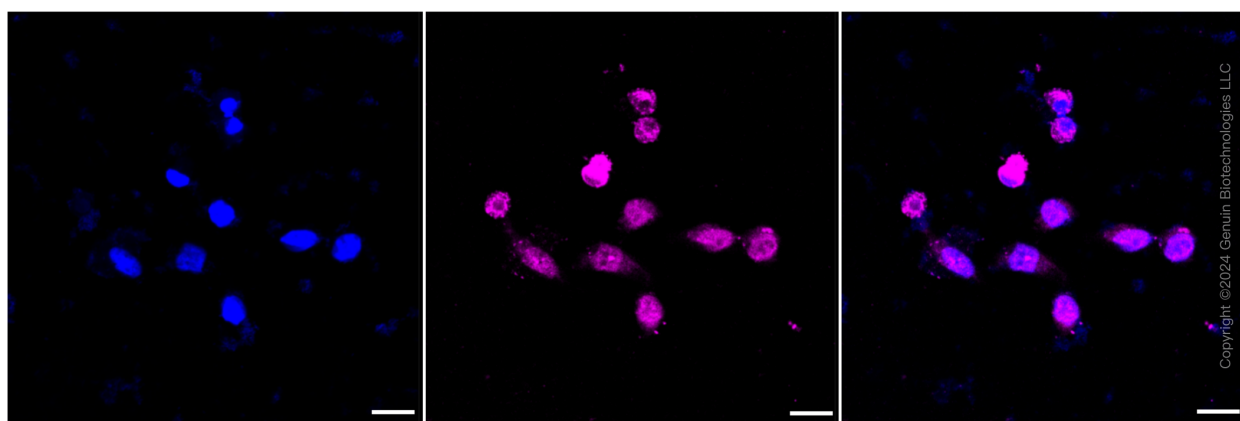
Note: This product is for research use only.

Validation Data



Copyright ©2024 Genuin Biotechnologies LLC

Flow cytometric analysis of RAD50 expression in HeLa cells using RAD50 antibody (Cat#61695, 1:2,000). Green, isotype control; red, RAD50.



Copyright ©2024 Genuin Biotechnologies LLC

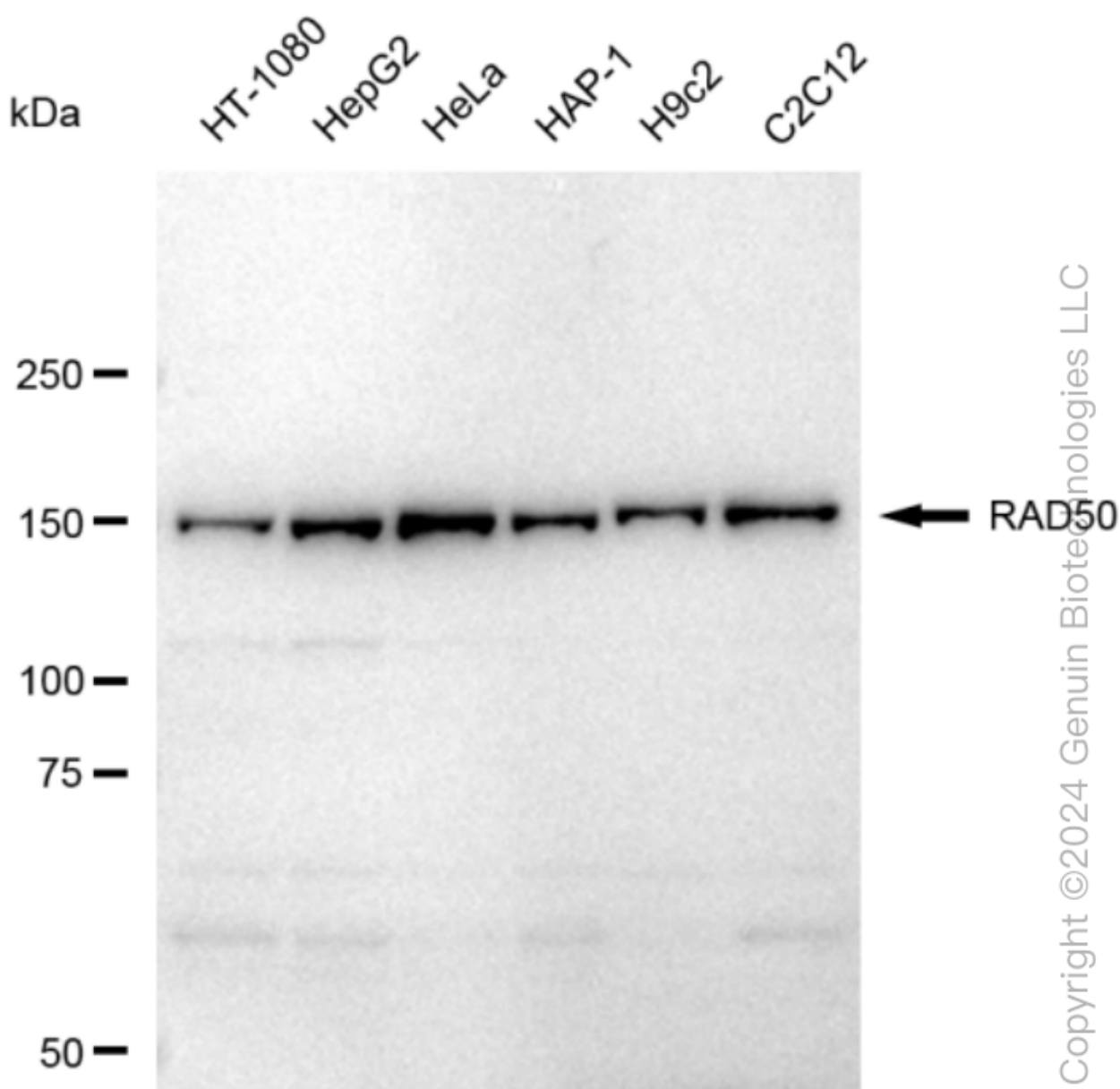
SUPPORT

SUPPORT@GENUINBIOTECH.COM
TEL: +1-540-855-7041

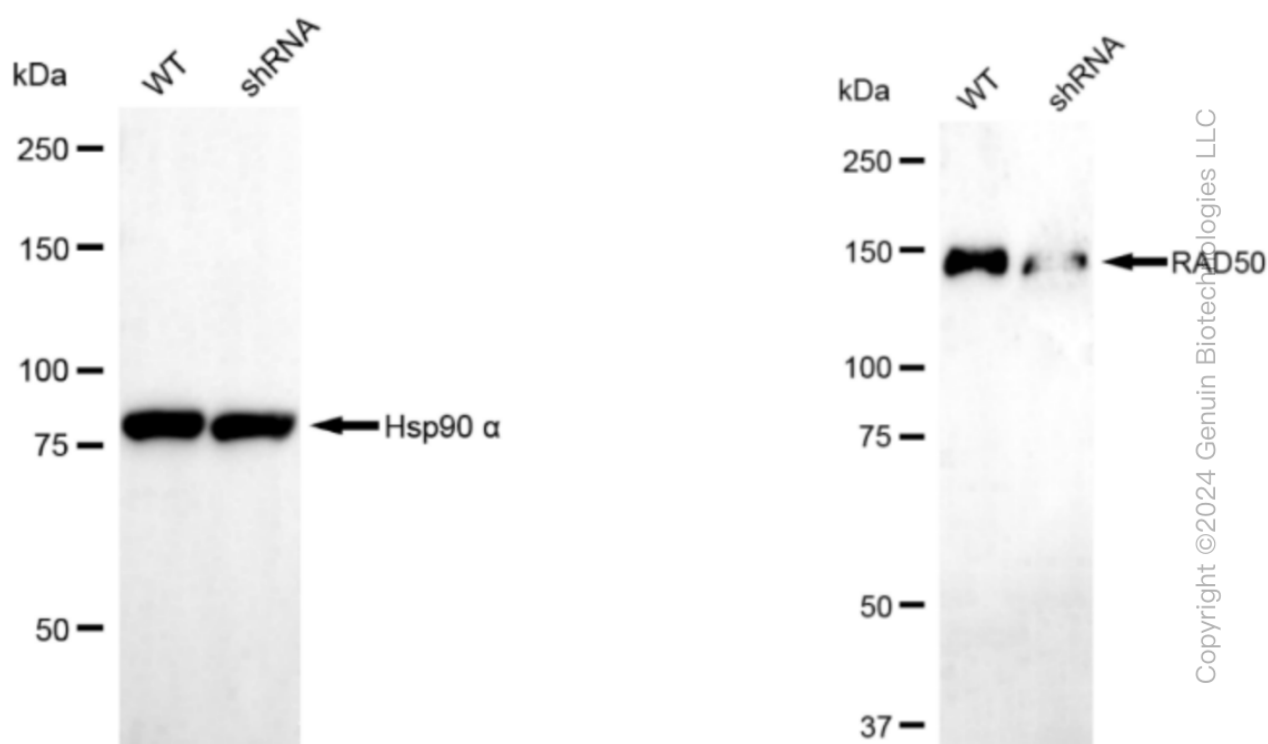
ORDERS

SALES@GENUINBIOTECH.COM
FAX: +1-540-855-7041

WWW.GENUINBIOTECH.COM



Western blotting analysis using anti-RAD50 antibody (Cat#61695). Total cell lysates (30 µg) from various cell lines were loaded and separated by SDS-PAGE. The blot was incubated with anti-RAD50 antibody (Cat#61695, 1:5,000) and HRP-conjugated goat anti-rabbit secondary antibody (Cat#201, 1:20,000) respectively. Image was developed using FeQ™ ECL Substrate Kit (Cat#226).



Western blotting analysis using anti-RAD50 antibody (Cat#61695). RAD50 expression in wild type (WT) and RAD50 shRNA knockdown (KD) HT-1080 cells with 30 μ g of total cell lysates. Hsp90 α serves as a loading control. The blot was incubated with anti-RAD50 antibody (Cat#61695, 1:5,000) and HRP-conjugated goat anti-rabbit secondary antibody (Cat#201, 1:20,000) respectively. Image was developed using FeQTM ECL Substrate Kit (Cat#226).