

KD-Validated Anti-RAN binding protein 9 Recombinant Rabbit Monoclonal Antibody



Catalog #: 61696

Aliases

RANBP9; RAN Binding Protein 9; RANBPM; Ran Binding Protein In The Microtubule Organizing Center; Ran-Binding Protein 9; Ran-Binding Protein M; RanBPM; RanBP7; BPM-L; BPM90; Novel Centrosomal Protein RanBPM; Ran Binding Protein, Centrosomal; RanBP9

Background

Gene Name: RANBP9

NCBI Gene Entry: [10048](#)

UniProt Entry: [Q96S59](#)

Application Information

Molecular Weight: Predicted, 78 kDa, observed, 91 kDa

Clonality: Rabbit monoclonal antibody

Clone ID: 23GB4120

Species Reactivity: Human, mouse, rat

Applications Tested: Western blotting (WB), flow cytometry (FCM), immunocytochemistry (IC)

Immunogen

A synthesized peptide derived from human RanBP9

Isotype

Rabbit IgG

Storage Buffer

Supplied in PBS (pH 7.4) containing 50% glycerol, and 0.02% sodium azide.

Storage

Store at -20 °C for one year.

Recommended Dilutions

Western Blotting (WB): 1:1,000-1:5,000

Flow Cytometry (FCM): 1:2,000

Immunocytochemistry (IC): 1:100-1:1,000

Note: This product is for research use only.

SUPPORT

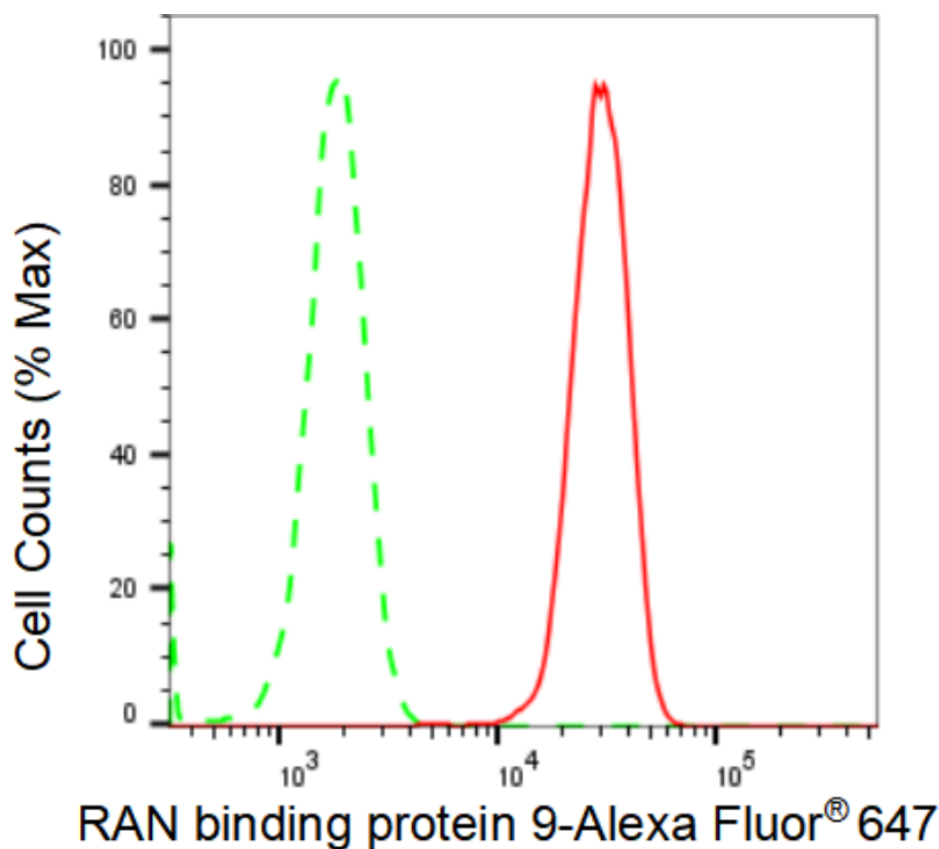
SUPPORT@GENUINBIOTECH.COM
TEL: +1-540-855-7041

ORDERS

SALES@GENUINBIOTECH.COM
FAX: +1-540-855-7041

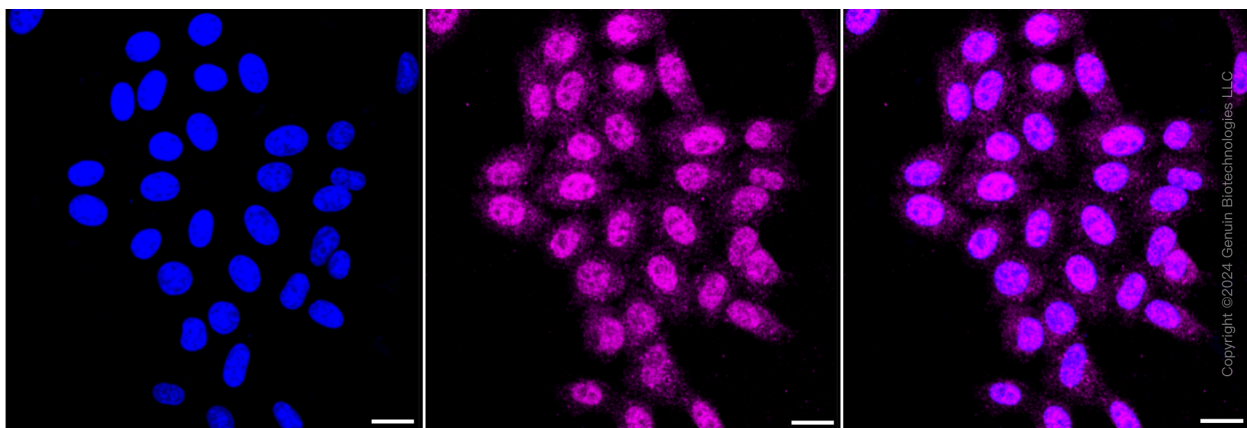
WWW.GENUINBIOTECH.COM

Validation Data



Copyright ©2024 Genuin Biotechnologies LLC

Flow cytometric analysis of RAN binding protein 9 expression in HepG2 cells using RAN binding protein 9 antibody (Cat#61696, 1:2,000). Green, isotype control; red, RAN binding protein 9.



Copyright ©2024 Genuin Biotechnologies LLC

Immunocytochemical staining of HepG2 cells with RAN binding protein 9 antibody (Cat#61696, 1:1,000). Nuclei were stained blue with DAPI; RAN binding protein 9 was stained magenta with Alexa Fluor® 647. Images were taken using Leica stellaris 5. Protein abundance based on laser Intensity and smart gain: Medium. Scale bar: 20 μ m.

SUPPORT

SUPPORT@GENUINBIOTECH.COM
TEL: +1-540-855-7041

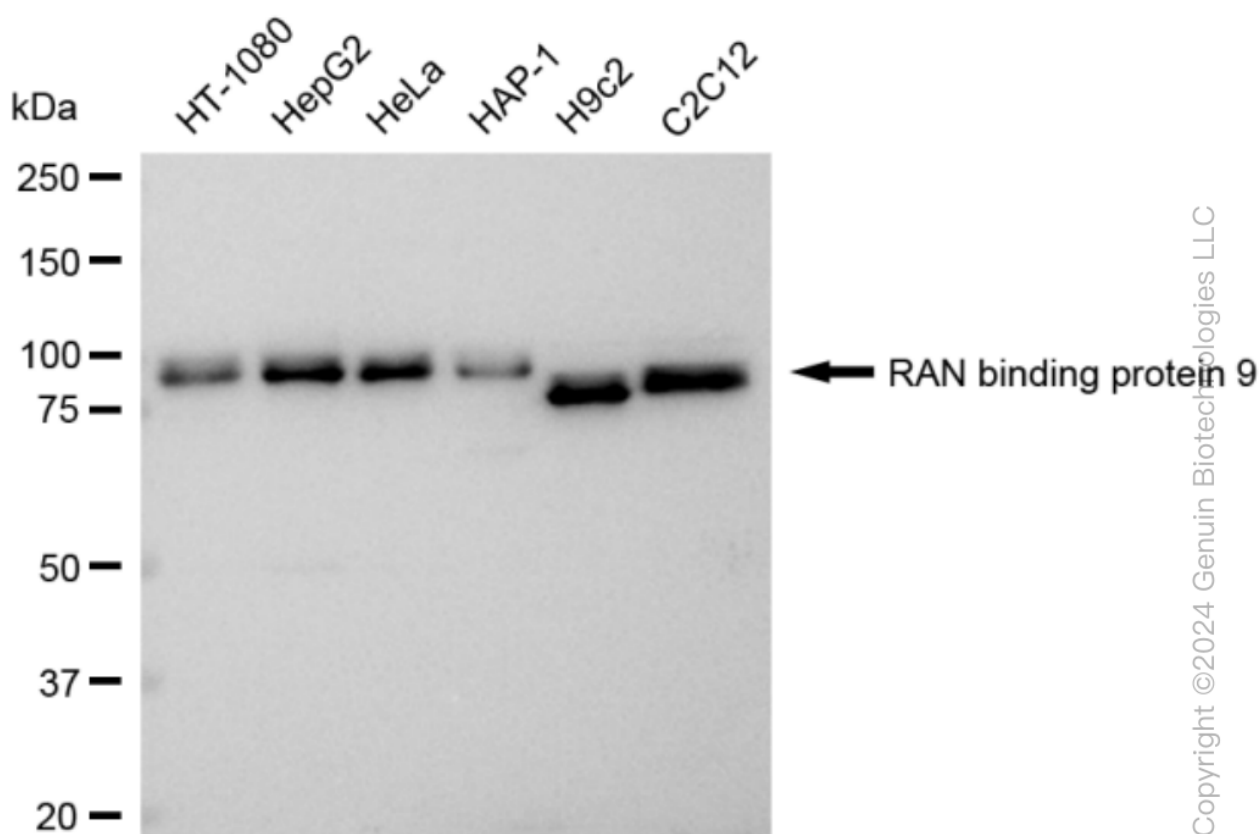
ORDERS

SALES@GENUINBIOTECH.COM
FAX: +1-540-855-7041

WWW.GENUINBIOTECH.COM

KD-Validated Anti-RAN binding protein 9 Recombinant Rabbit Monoclonal Antibody

PAGE 3



Western blotting analysis using anti-RAN binding protein 9 antibody (Cat#61696). Total cell lysates (30 μ g) from various cell lines were loaded and separated by SDS-PAGE. The blot was incubated with anti-RAN binding protein 9 antibody (Cat#61696, 1:5,000) and HRP-conjugated goat anti-rabbit secondary antibody (Cat#201, 1:20,000) respectively. Image was developed using FeQ™ ECL Substrate Kit (Cat#226).

SUPPORT

SUPPORT@GENUINBIOTECH.COM
TEL: +1-540-855-7041

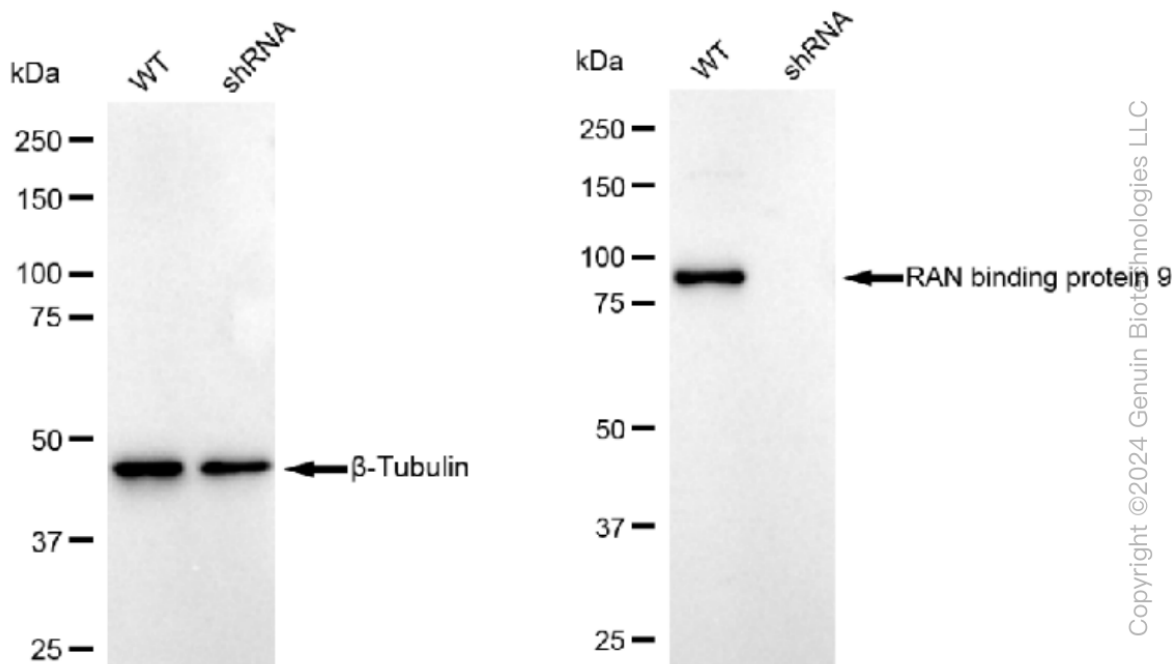
ORDERS

SALES@GENUINBIOTECH.COM
FAX: +1-540-855-7041

WWW.GENUINBIOTECH.COM

KD-Validated Anti-RAN binding protein 9 Recombinant Rabbit Monoclonal Antibody

PAGE 4



Western blotting analysis using anti-RAN binding protein 9 antibody (Cat#61696). RAN binding protein 9 expression in wild type (WT) and RAN binding protein 9 shRNA knockdown (KD) HeLa cells with 30 µg of total cell lysates. β-Tubulin serves as a loading control. The blot was incubated with anti-RAN binding protein 9 antibody (Cat#61696, 1:5,000) and HRP-conjugated goat anti-rabbit secondary antibody (Cat#201, 1:20,000) respectively. Image was developed using FeQ™ ECL Substrate Kit (Cat#226).

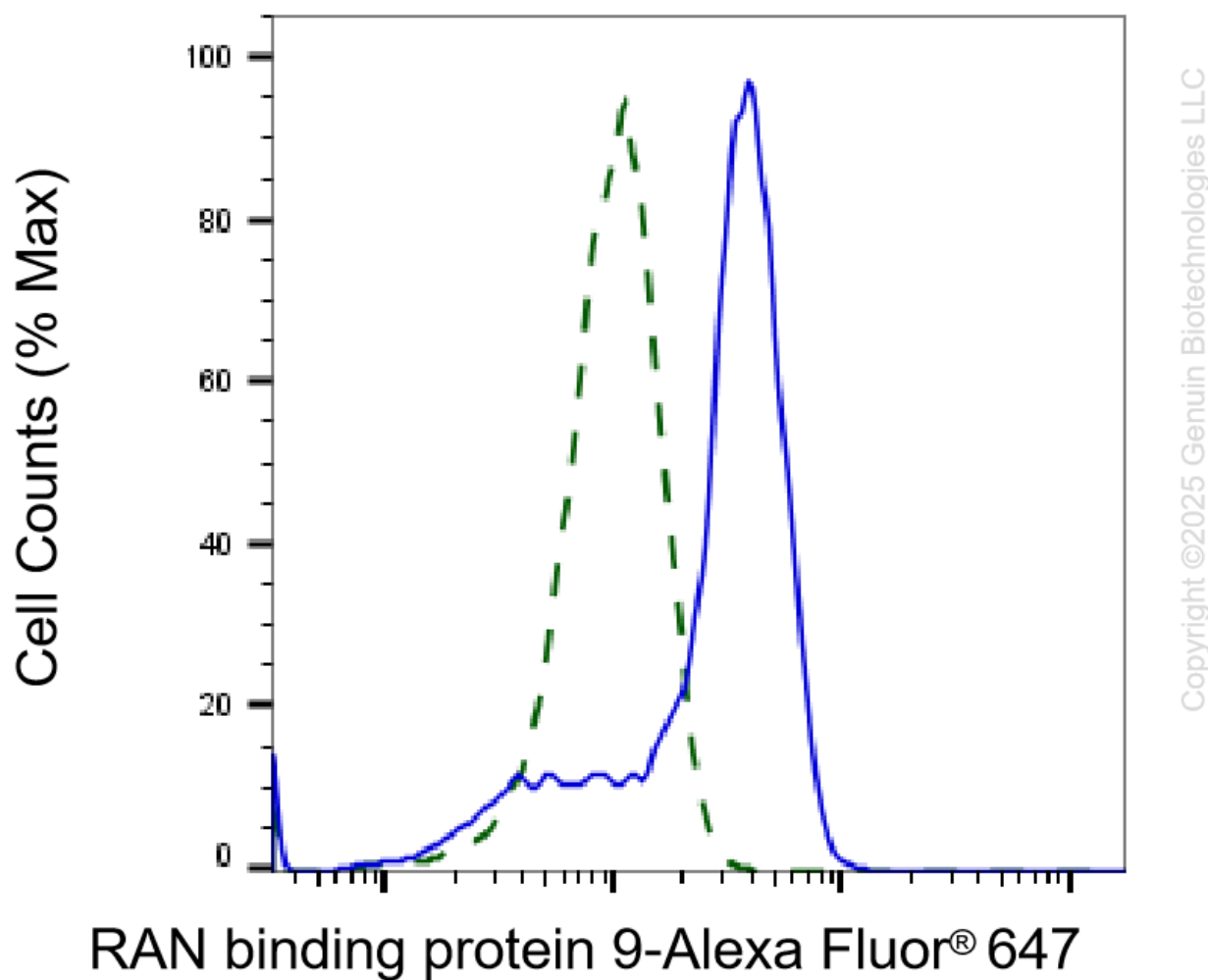
SUPPORT

SUPPORT@GENUINBIOTECH.COM
TEL: +1-540-855-7041

ORDERS

SALES@GENUINBIOTECH.COM
FAX: +1-540-855-7041

WWW.GENUINBIOTECH.COM



Validation of RAN binding protein 9 knockdown using flow cytometry. Wild-type(WT, Blue) and knockdown(KD, Green) HeLa cells were stained with anti-RAN binding protein 9 antibody (Cat#61696, 1:2,000) and analyzed using BD flow cytometer.