

KD-Validated Anti-Sad1 And UNC84 Domain Containing 2 Recombinant Rabbit Monoclonal



Catalog #: 61698

Aliases

SUN2; Sad1 And UNC84 Domain Containing 2; UNC84B; SUN Domain-Containing Protein 2; Sad1/Unc-84 Protein-Like 2; Protein Unc-84 Homolog B; Rab5-Interacting Protein; Rab5IP; Unc-84 Homolog B (C. Elegans); Sad1 Unc-84 Domain Protein 2; Nuclear Envelope Protein; Unc-84 Homolog B; KIAA0668; RAB5IP; FRIGG

Background

Gene Name: SUN2

NCBI Gene Entry: [25777](#)

UniProt Entry: [Q9UH99](#)

Application Information

Molecular Weight: Predicted, 80 kDa; observed, 75 kDa

Clonality: Rabbit monoclonal antibody

Clone ID: 25GB3360

Species Reactivity: Human, mouse, rat

Applications Tested: Western blotting (WB), flow cytometry (FCM), immunocytochemistry (IC)

Immunogen

A synthesized peptide derived from human SUN2

Isotype

Rabbit IgG

Storage Buffer

Supplied in PBS (pH 7.4) containing 50% glycerol, and 0.02% sodium azide.

Storage

Store at -20 °C for one year.

Recommended Dilutions

Western blotting (WB): 1:1,000-1:5,000

Flow Cytometry (FCM): 1:2,000

Immunocytochemistry (IC): 1:100-1:1,000

SUPPORT

SUPPORT@GENUINBIOTECH.COM
TEL: +1-540-855-7041

ORDERS

SALES@GENUINBIOTECH.COM
FAX: +1-540-855-7041

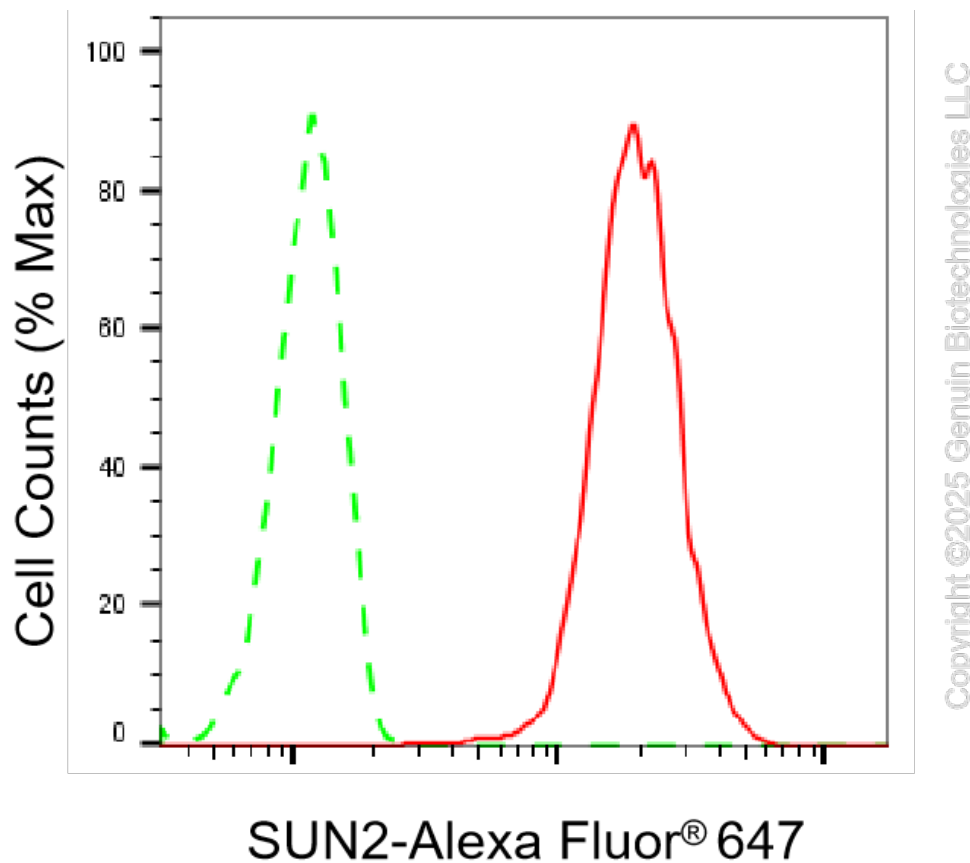
WWW.GENUINBIOTECH.COM

KD-Validated Anti-Sad1 And UNC84 Domain Containing 2 Recombinant Rabbit Monoclonal

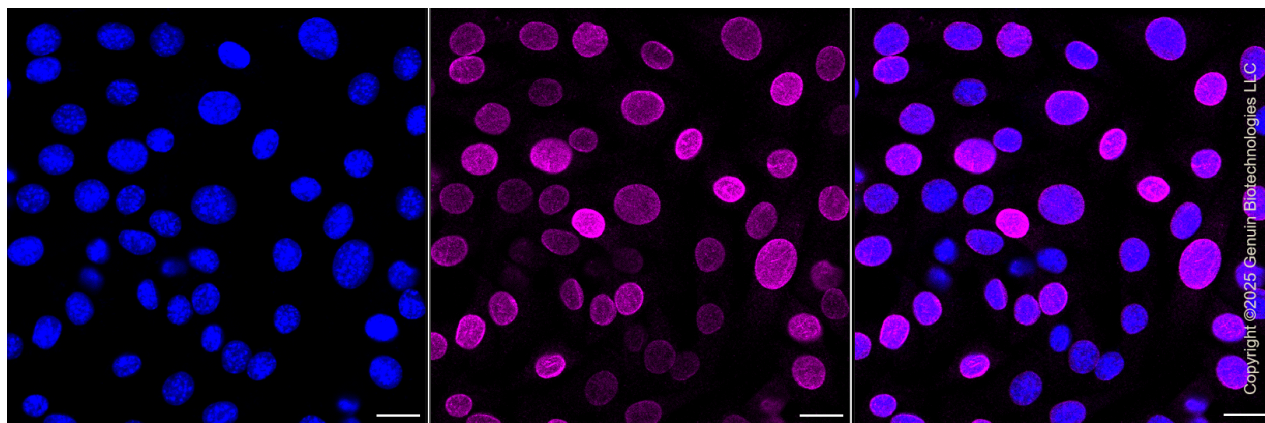
PAGE 2

Note: This product is for research use only.

Validation Data



Flow cytometric analysis of SUN2 expression in C2C12 cells using anti-SUN2 antibody (Cat#61698, 1:2,000). Green, isotype control; red, SUN2.



Immunocytochemical staining of C2C12 cells with SUN2 antibody (Cat#61698, 1:1,000). Nuclei were stained blue with DAPI; SUN2 was stained magenta with Alexa Fluor® 647. Images were taken using Leica stellaris 5. Protein abundance based on laser Intensity and smart gain: High. Scale bar, 20 μ m.

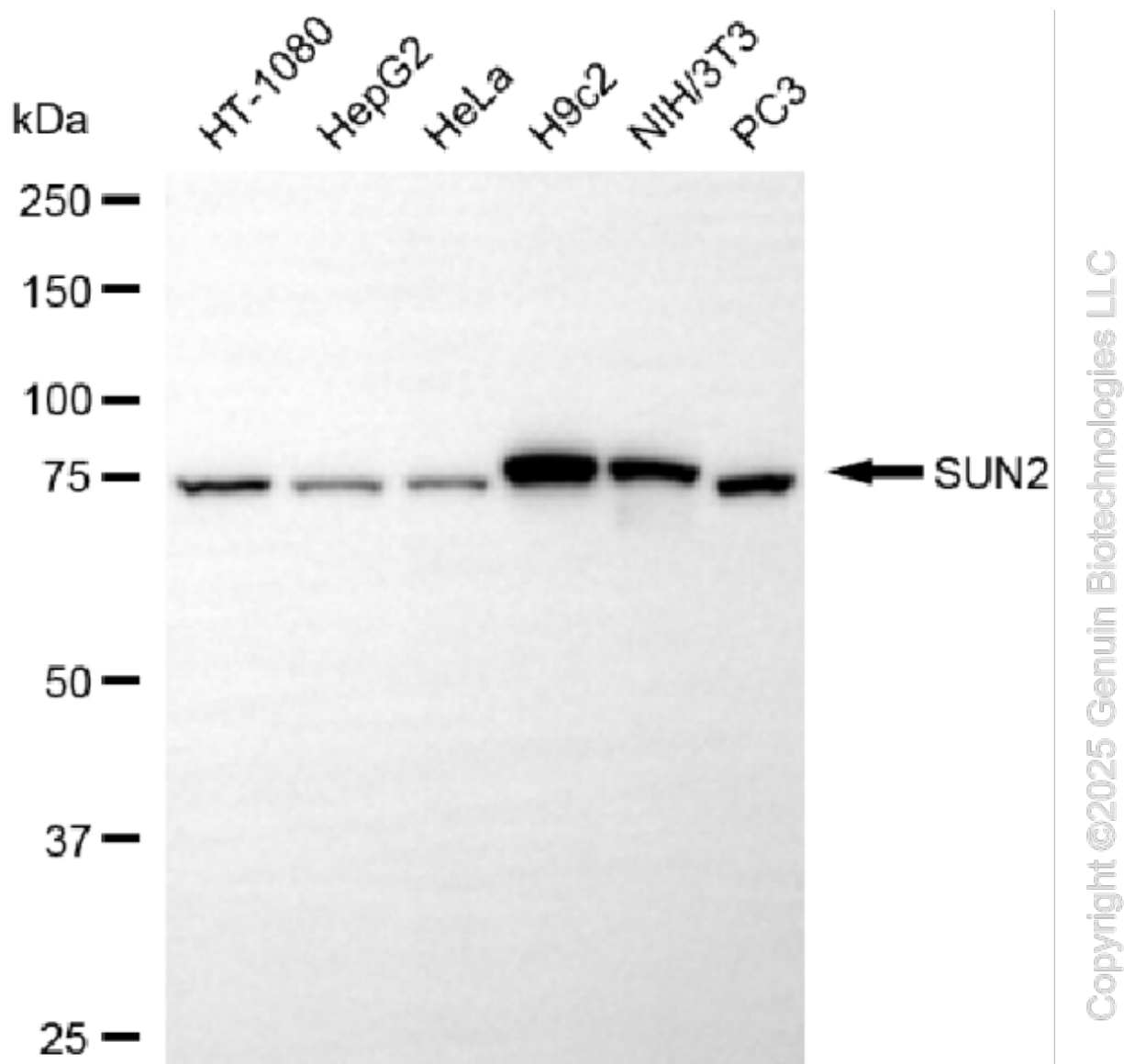
SUPPORT

SUPPORT@GENUINBIOTECH.COM
TEL: +1-540-855-7041

ORDERS

SALES@GENUINBIOTECH.COM
FAX: +1-540-855-7041

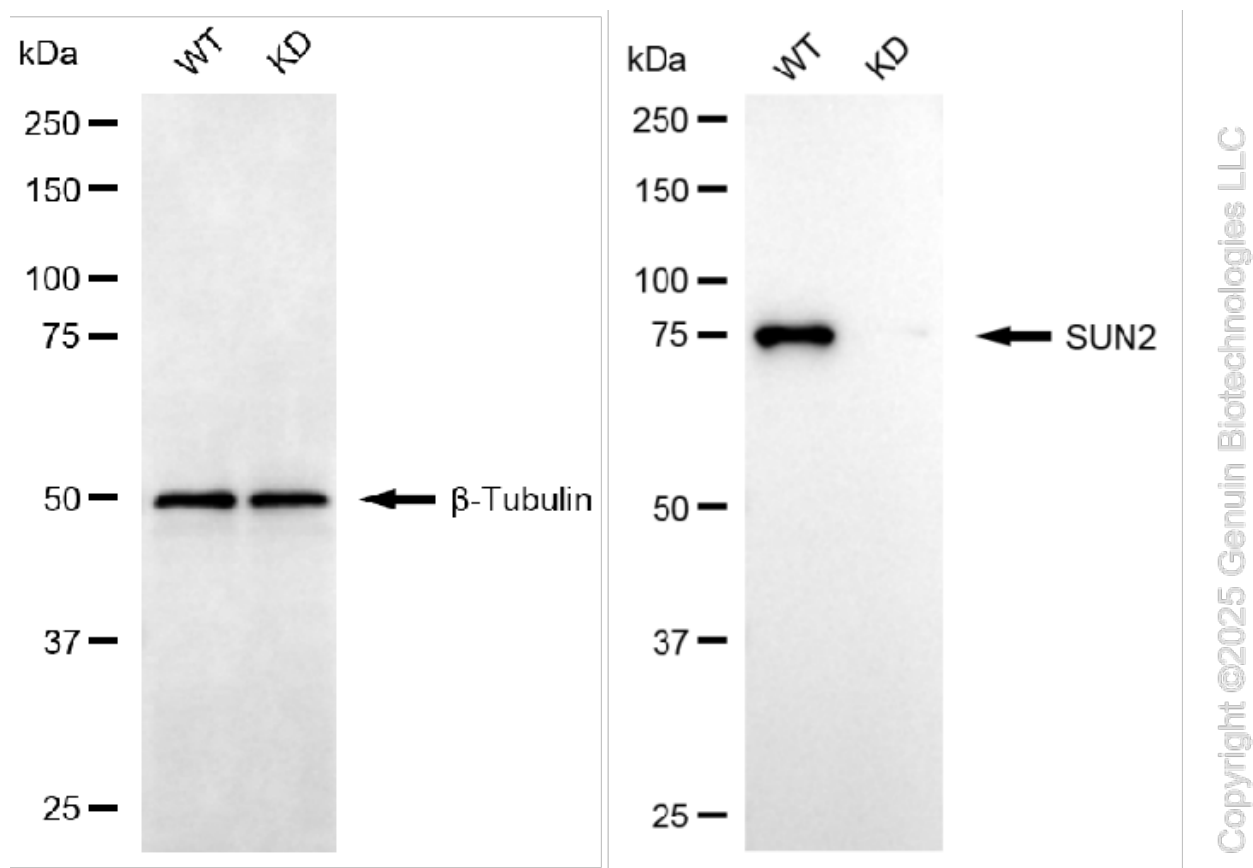
WWW.GENUINBIOTECH.COM



Western blotting analysis using anti-SUN2 antibody (Cat#61698). Total cell lysates (30 μ g) from various cell lines were loaded and separated by SDS-PAGE. The blot was incubated with anti-SUN2 antibody (Cat#61698, 1:5,000) and HRP-conjugated goat anti-rabbit secondary antibody (Cat#201, 1:20,000) respectively. Image was developed using NaQ™ ECL Substrate Kit (Cat#716).

KD-Validated Anti-Sad1 And UNC84 Domain Containing 2 Recombinant Rabbit Monoclonal

PAGE 4



Western blotting analysis using anti-SUN2 antibody (Cat#61698). SUN2 expression in wild type (WT) and SUN2 knockdown (KD) HSHC cells with 20 µg of total cell lysates. β-Tubulin serves as a loading control. The blot was incubated with anti-SUN2 antibody (Cat#61698, 1:5,000) and HRP-conjugated goat anti-rabbit secondary antibody (Cat#201, 1:20,000) respectively. Image was developed using NaQ™ ECL Substrate Kit (Cat#716).

SUPPORT

SUPPORT@GENUINBIOTECH.COM
TEL: +1-540-855-7041

ORDERS

SALES@GENUINBIOTECH.COM
FAX: +1-540-855-7041

WWW.GENUINBIOTECH.COM