

KD-Validated Anti-PSMD4 Recombinant Rabbit Monoclonal Antibody



Catalog #: 61699

Aliases

PSMD4; Proteasome 26S Subunit Ubiquitin Receptor, Non-ATPase 4; AF; Rpn10; AF-1; S5A; Proteasome (Prosome, Macropain) 26S Subunit, Non-ATPase, 4; 26S Proteasome Non-ATPase Regulatory Subunit 4; 26S Proteasome Regulatory Subunit S5A; Proteasome 26S Subunit, Non-ATPase 4; Multiubiquitin Chain-Binding Protein; Antisecretory Factor 1; MCB1; ASF; 26S Proteasome Regulatory Subunit RPN10; S5a/Antisecretory Factor Protein; Angiocidin; PUB-R5

Background

Gene Name: PSMD4

NCBI Gene Entry: [5710](#)

UniProt Entry: [P55036](#)

Application Information

Molecular Weight: Predicted, 41 kDa, observed, 50 kDa

Clonality: Rabbit monoclonal antibody

Clone ID: 25GB3365

Species Reactivity: Human, mouse, rat

Applications Tested: Western blotting (WB), flow cytometry (FCM)

Immunogen

A synthesized peptide derived from human PSMD4

Isotype

Rabbit IgG

Storage Buffer

Supplied in PBS (pH 7.4) containing 50% glycerol, and 0.02% sodium azide.

Storage

Store at -20 °C for one year.

Recommended Dilutions

Western blotting (WB): 1:1,000-1:5,000

Flow Cytometry (FCM): 1:2,000

SUPPORT

SUPPORT@GENUINBIOTECH.COM
TEL: +1-540-855-7041

ORDERS

SALES@GENUINBIOTECH.COM
FAX: +1-540-855-7041

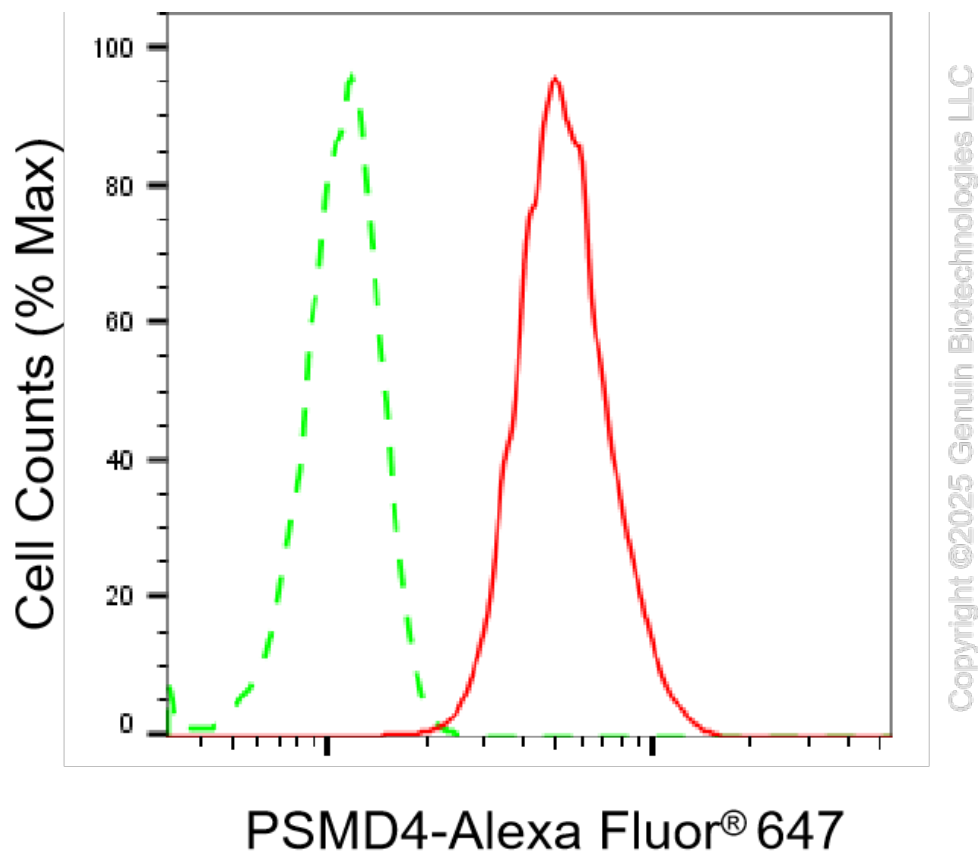
WWW.GENUINBIOTECH.COM

KD-Validated Anti-PSMD4 Recombinant Rabbit Monoclonal Antibody

PAGE 2

Note: This product is for research use only.

Validation Data



Flow cytometric analysis of PSMD4 expression in HepG2 cells using anti-PSMD4 antibody (Cat#61699, 1:2,000). Green, isotype control; red, PSMD4.

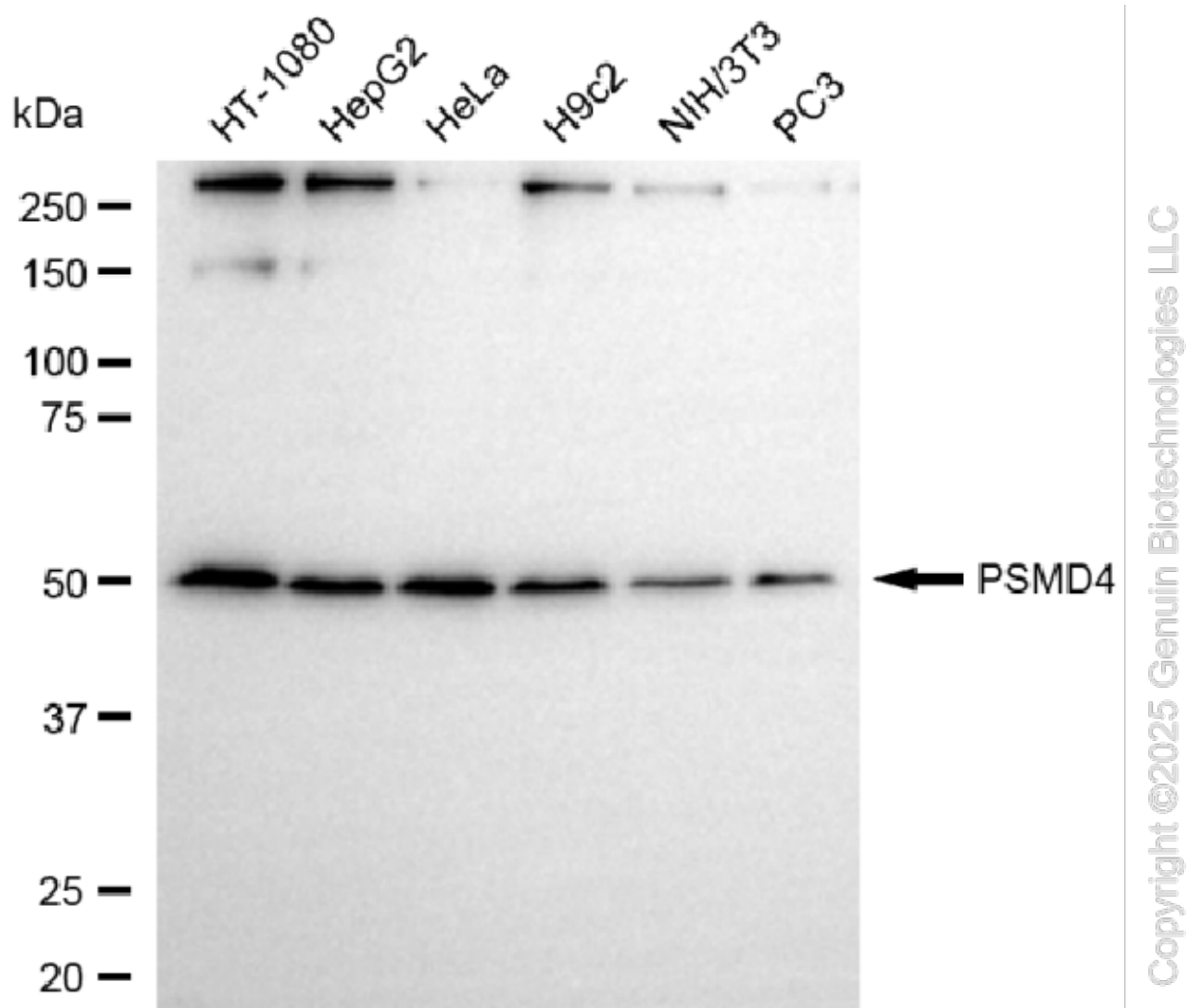
SUPPORT

SUPPORT@GENUINBIOTECH.COM
TEL: +1-540-855-7041

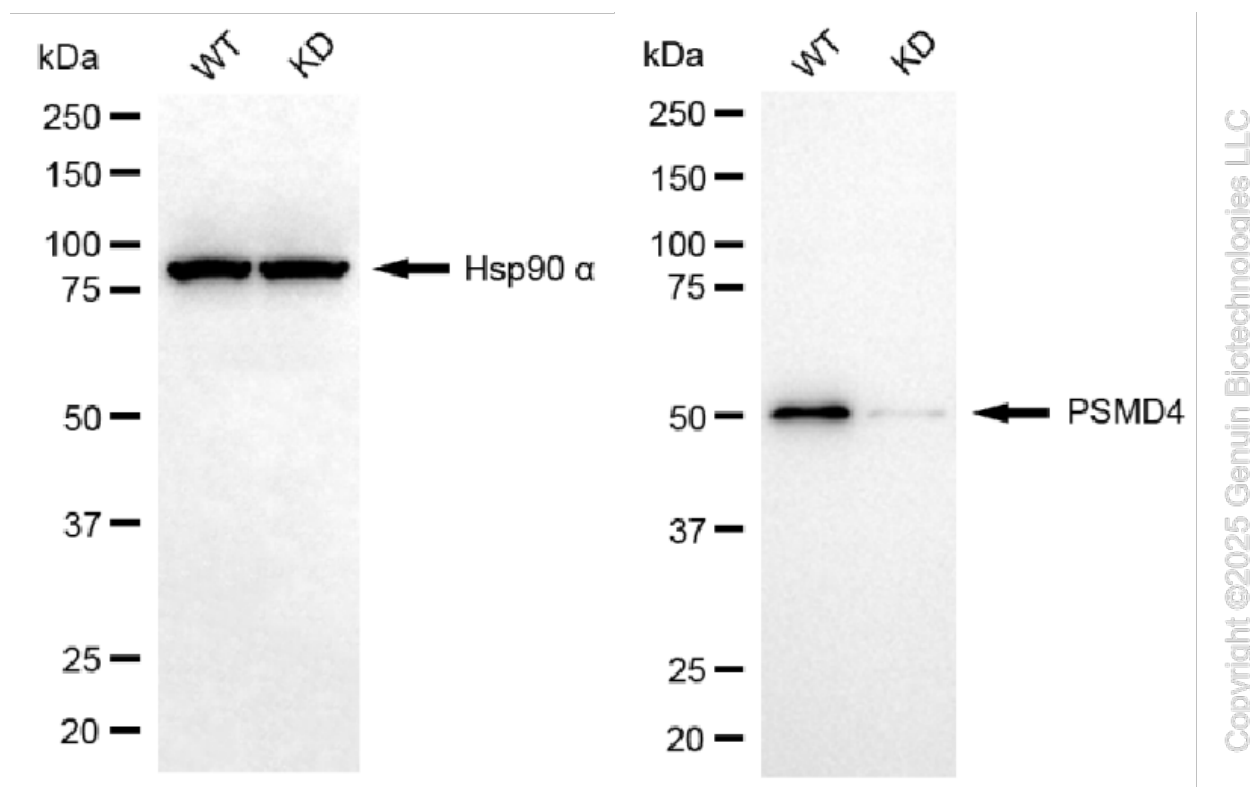
ORDERS

SALES@GENUINBIOTECH.COM
FAX: +1-540-855-7041

WWW.GENUINBIOTECH.COM



Western blotting analysis using anti-PSMD4 antibody (Cat#61699). Total cell lysates (30 μ g) from various cell lines were loaded and separated by SDS-PAGE. The blot was incubated with anti-PSMD4 antibody (Cat#61699, 1:5,000) and HRP-conjugated goat anti rabbit secondary antibody (Cat#201, 1:20,000) respectively. Image was developed using NaQ™ ECL Substrate Kit (Cat#716).



Western blotting analysis using anti-PSMD4 antibody (Cat#61699). PSMD4 expression in wild type (WT) and PSMD4 knockdown (KD) HSHC cells with 20 µg of total cell lysates. Hsp90 α serves as a loading control. The blot was incubated with anti-PSMD4 antibody (Cat#61699, 1:5,000) and HRP-conjugated goat anti-rabbit secondary antibody (Cat#201, 1:20,000) respectively. Image was developed using FeQ™ ECL Substrate Kit (Cat#226).