

KD-Validated Anti-KHDRBS1 Recombinant Rabbit Monoclonal Antibody



Catalog #: 61702

Aliases

KHDRBS1; KH RNA Binding Domain Containing, Signal Transduction Associated 1; Sam68; Src-Associated In Mitosis 68 KDa Protein; P62; KH Domain-Containing, RNA-Binding, Signal Transduction-Associated Protein 1; P21 Ras GTPase-Activating Protein-Associated P62; GAP-Associated Tyrosine Phosphoprotein P62; FLJ34027; P68; KH Domain Containing, RNA Binding, Signal Transduction Associated 1; GAP-Associated Tyrosine Phosphoprotein P62 (Sam68); SAM68

Background

Gene Name: KHDRBS1

NCBI Gene Entry: [10657](#)

UniProt Entry: [Q07666](#)

Application Information

Molecular Weight: Predicted, 48 kDa, observed, 68 kDa

Clonality: Rabbit monoclonal antibody

Clone ID: 25GB3385

Species Reactivity: Human, mouse, rat

Applications Tested: Western blotting (WB), flow cytometry (FCM), immunocytochemistry (IC)

Immunogen

A synthesized peptide derived from human SAM68

Isotype

Rabbit IgG

Storage Buffer

Supplied in PBS (pH 7.4) containing 50% glycerol, and 0.02% sodium azide.

Storage

Store at -20 °C for one year.

Recommended Dilutions

Western blotting (WB): 1:1,000-1:5,000

Flow Cytometry (FCM): 1:2,000

Immunocytochemistry (IC): 1:100-1:1,000

SUPPORT

SUPPORT@GENUINBIOTECH.COM
TEL: +1-540-855-7041

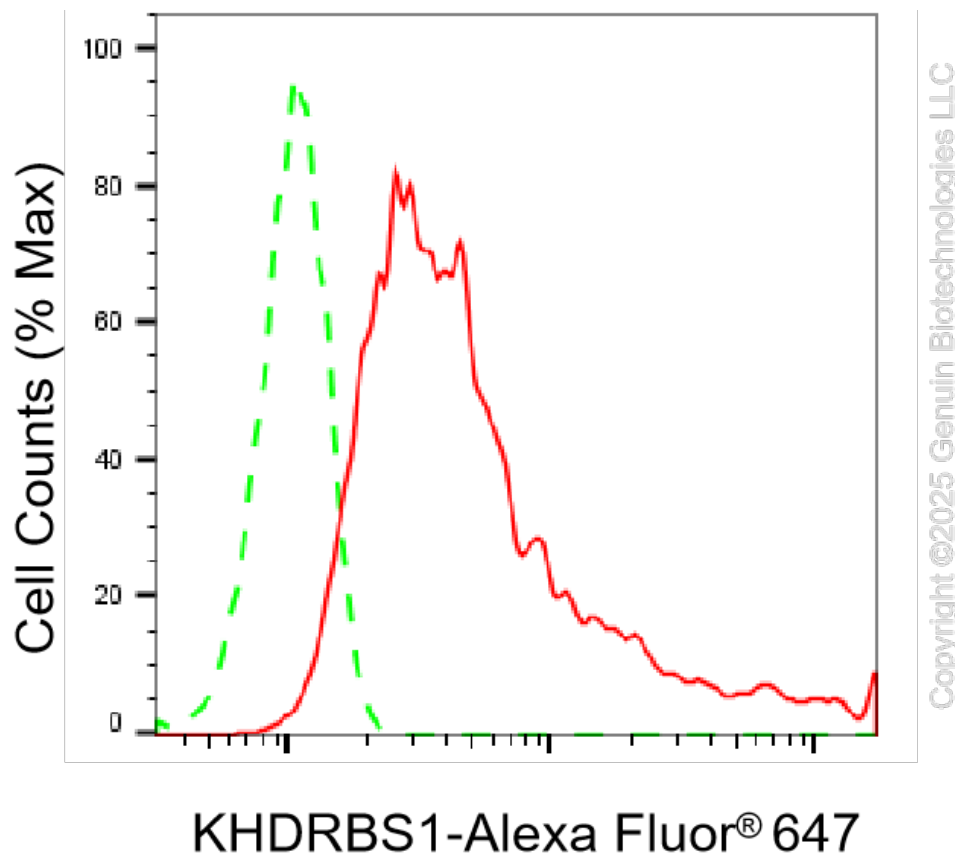
ORDERS

SALES@GENUINBIOTECH.COM
FAX: +1-540-855-7041

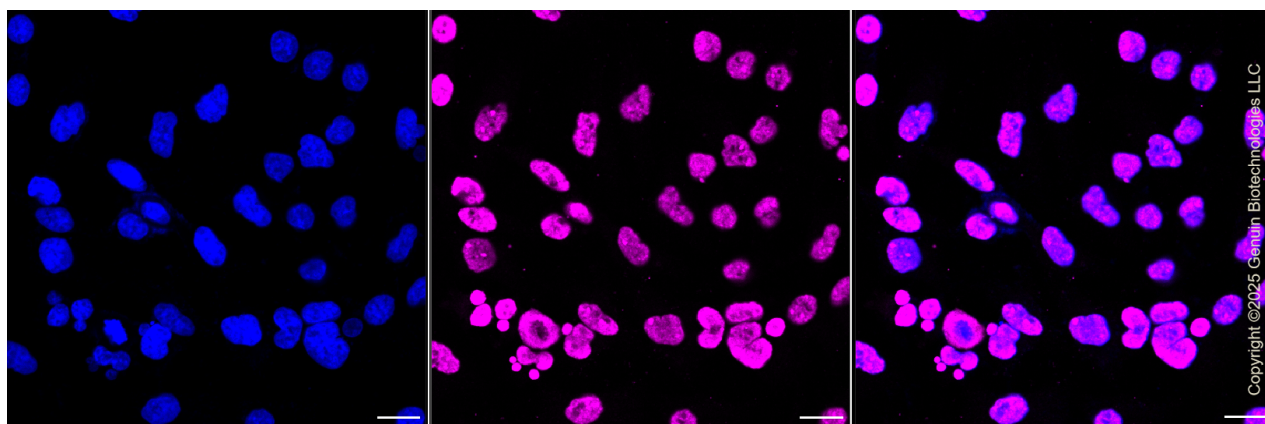
WWW.GENUINBIOTECH.COM

Note: This product is for research use only.

Validation Data



Flow cytometric analysis of KHDRBS1 expression in HeLa cells using anti-KHDRBS1 antibody (Cat#61702, 1:2,000). Green, isotype control; red, KHDRBS1.



Immunocytochemical staining of HeLa cells with anti-KHDRBS1 antibody (Cat#61702, 1:1,000). Nuclei were stained blue with DAPI; KHDRBS1 was stained magenta with Alexa Fluor® 647. Images were taken using Leica stellaris 5. Protein abundance based on laser Intensity and smart

SUPPORT

SUPPORT@GENUINBIOTECH.COM
TEL: +1-540-855-7041

ORDERS

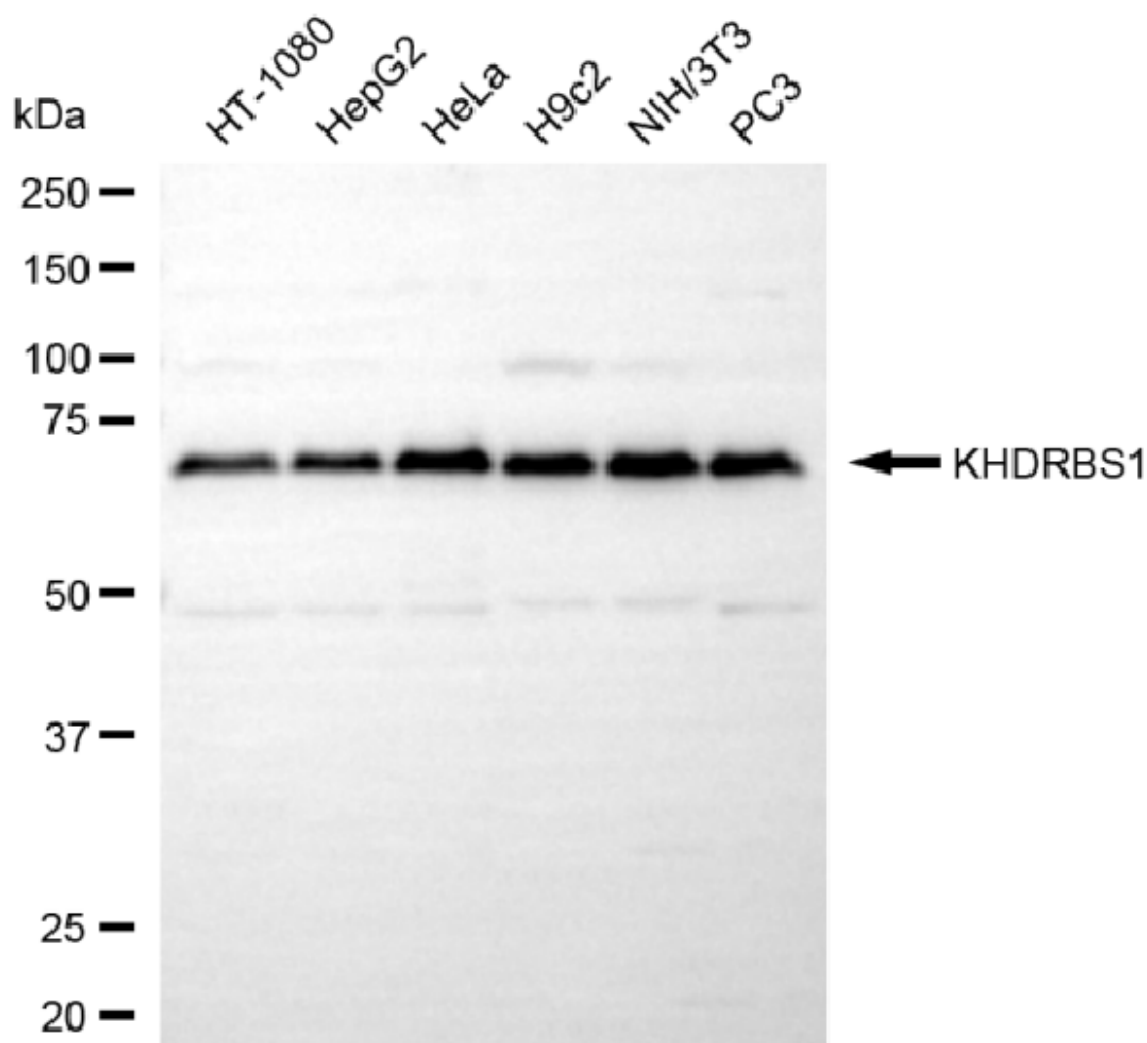
SALES@GENUINBIOTECH.COM
FAX: +1-540-855-7041

WWW.GENUINBIOTECH.COM

KD-Validated Anti-KHDRBS1 Recombinant Rabbit Monoclonal Antibody

PAGE 3

gain: High. Scale bar, 20 μ m.



Copyright ©2025 Genuin Biotechnologies LLC

Western blotting analysis using anti-KHDRBS1 antibody (Cat#61702). Total cell lysates (30 μ g) from various cell lines were loaded and separated by SDS-PAGE. The blot was incubated with anti-KHDRBS1 antibody (Cat#61702, 1:5,000) and HRP-conjugated goat anti rabbit secondary antibody (Cat#201, 1:20,000) respectively. Image was developed using NaQTM ECL Substrate Kit (Cat#716).

SUPPORT

SUPPORT@GENUINBIOTECH.COM
TEL: +1-540-855-7041

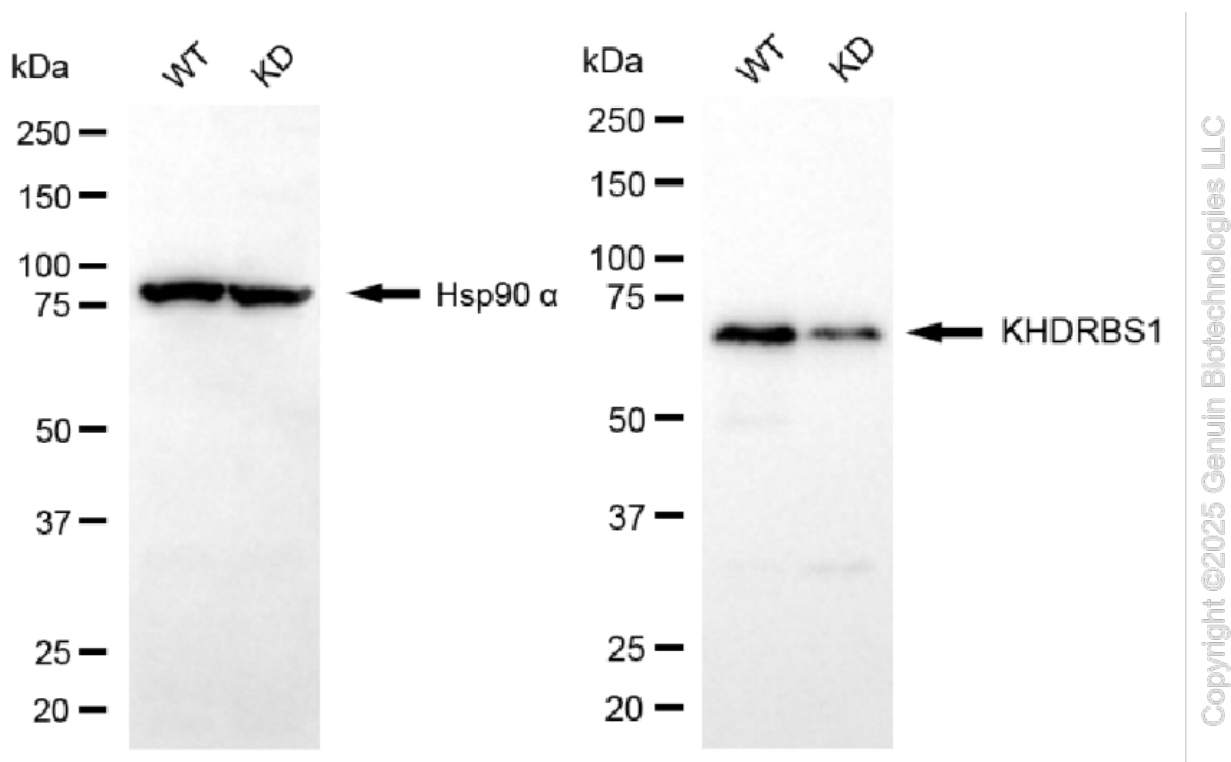
ORDERS

SALES@GENUINBIOTECH.COM
FAX: +1-540-855-7041

WWW.GENUINBIOTECH.COM

KD-Validated Anti-KHDRBS1 Recombinant Rabbit Monoclonal Antibody

PAGE 4



Western blotting analysis using anti-KHDRBS1 antibody (Cat#61702). KHDRBS1 expression in wild type (WT) and KHDRBS1 knockdown (KD) HSHC cells with 20 μ g of total cell lysates. Hsp90 α serves as a loading control. The blot was incubated with anti-KHDRBS1 antibody (Cat#61702, 1:5,000) and HRP-conjugated goat anti-rabbit secondary antibody (Cat#201, 1:20,000) respectively. Image was developed using NaQTM ECL Substrate Kit (Cat#716).

SUPPORT

SUPPORT@GENUINBIOTECH.COM
TEL: +1-540-855-7041

ORDERS

SALES@GENUINBIOTECH.COM
FAX: +1-540-855-7041

WWW.GENUINBIOTECH.COM