

KD-Validated Anti-Phospho-Smad2 (S250) Recombinant Rabbit Monoclonal Antibody



Catalog #: 61703

Aliases

SMAD2; SMAD Family Member 2; JV18-1; MADR2; MADH2; Mothers Against Decapentaplegic Homolog 2; MAD Homolog 2; HSMAD-2; HSMAD2; MAD, Mothers Against Decapentaplegic Homolog 2 (Drosophila); SMAD, Mothers Against DPP Homolog 2 (Drosophila); SMAD, Mothers Against DPP Homolog 2; Sma- And Mad-Related Protein 2; Mothers Against DPP Homolog 2; Mother Against DPP Homolog 2; Mad-Related Protein 2; SMAD 2; CHTD8; Smad2; JV18; LDS6

Background

Gene Name: SMAD2

NCBI Gene Entry: [4087](#)

UniProt Entry: [Q15796](#)

Application Information

Molecular Weight: Predicted, 52 kDa, observed, 58 kDa

Clonality: Rabbit monoclonal antibody

Clone ID: 23GB4150

Species Reactivity: Human, mouse, rat

Applications Tested: Western blotting (WB), flow cytometry (FCM), immunocytochemistry (IC)

Immunogen

A synthesized peptide derived from human Smad2

Isotype

Rabbit IgG

Storage Buffer

Supplied in PBS (pH 7.4) containing 50% glycerol, and 0.02% sodium azide.

Storage

Store at -20 °C for one year.

Recommended Dilutions

Western Blotting (WB): 1:1,000-1:5,000

Flow Cytometry (FCM): 1:2,000

Immunocytochemistry (IC): 1:100-1:1,000

SUPPORT

SUPPORT@GENUINBIOTECH.COM
TEL: +1-540-855-7041

ORDERS

SALES@GENUINBIOTECH.COM
FAX: +1-540-855-7041

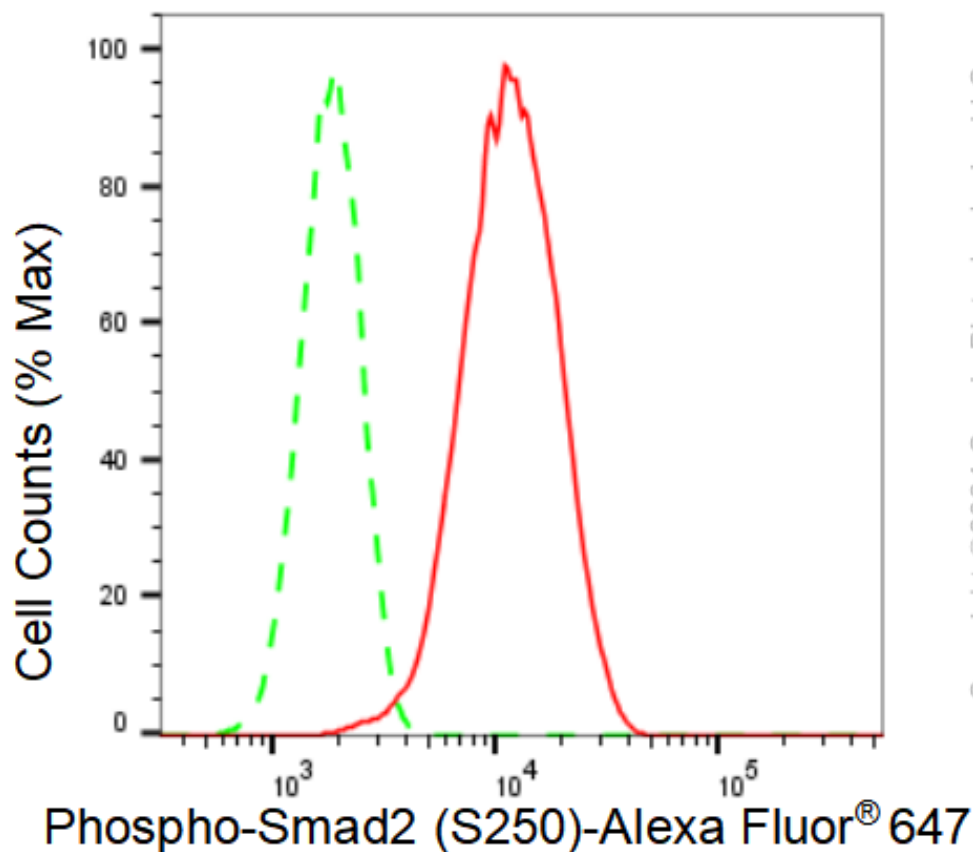
WWW.GENUINBIOTECH.COM

KD-Validated Anti-Phospho-Smad2 (S250) Recombinant Rabbit Monoclonal Antibody

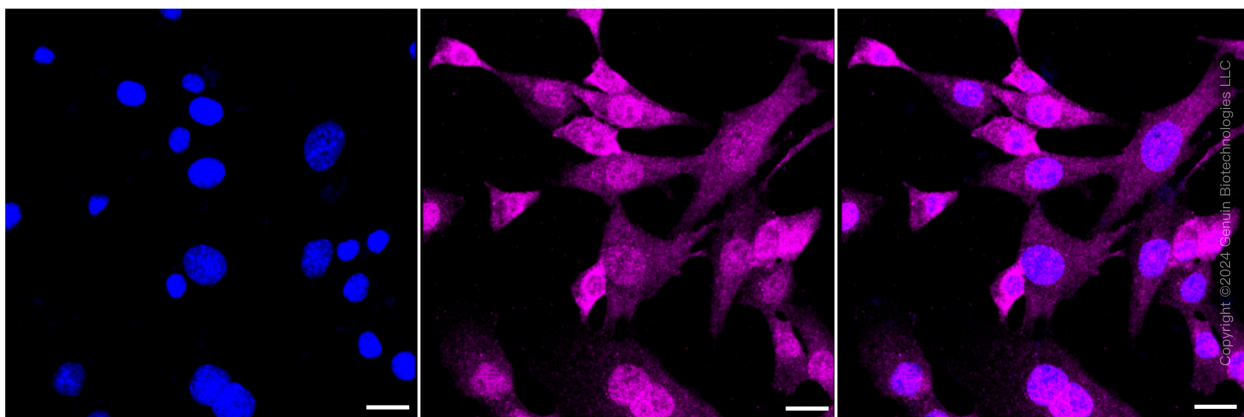
PAGE 2

Note: This product is for research use only.

Validation Data



Flow cytometric analysis of Phospho-Smad2 (S250) expression in C2C12 cells using Phospho-Smad2 (S250) antibody (Cat#61703, 1:2,000). Green, isotype control; red, Phospho-Smad2 (S250).



Immunocytochemical staining of C2C12 cells with Phospho-Smad2 (S250) antibody (Cat#61703, 1:1,000). Nuclei were stained blue with DAPI; Phospho-Smad2 (S250) was stained magenta with

SUPPORT

SUPPORT@GENUINBIOTECH.COM
TEL: +1-540-855-7041

ORDERS

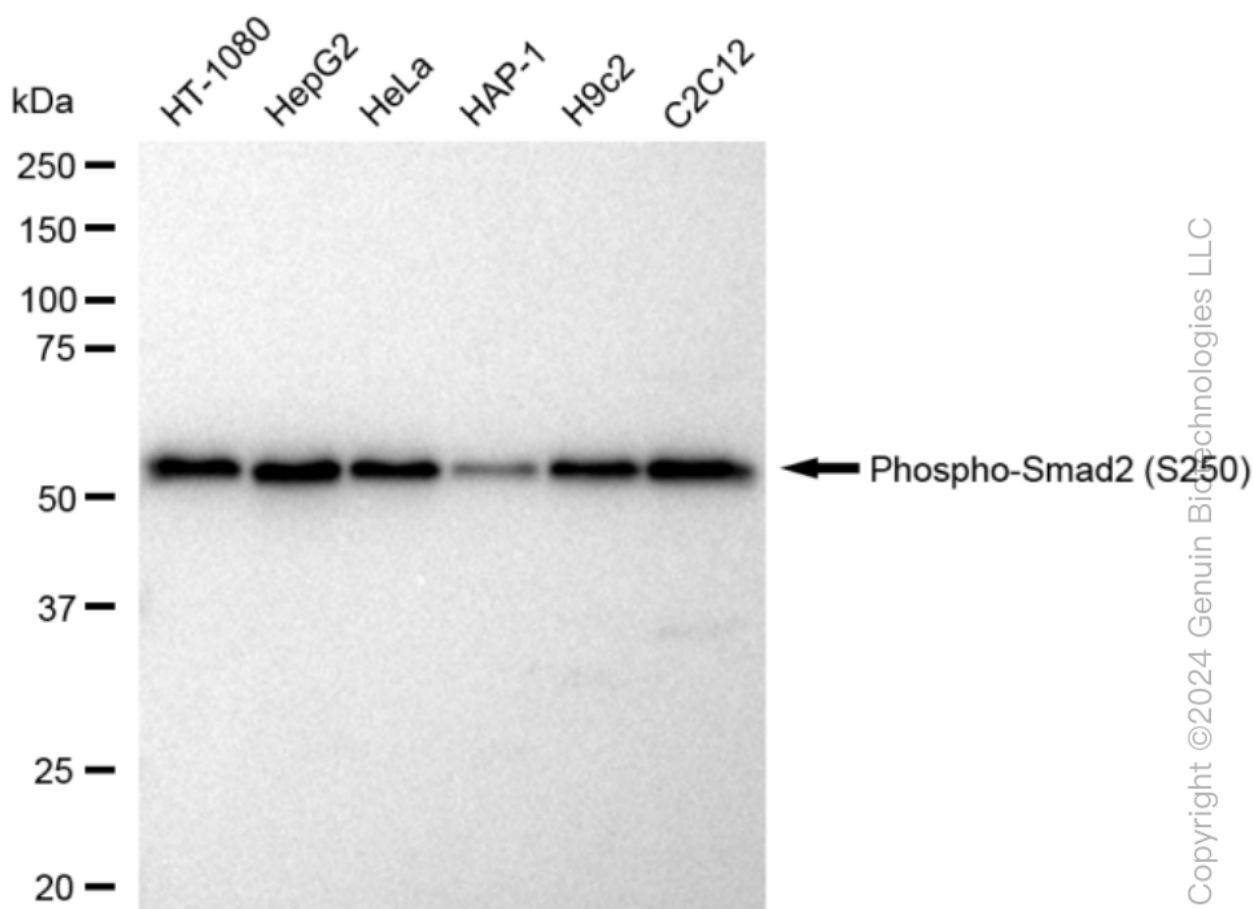
SALES@GENUINBIOTECH.COM
FAX: +1-540-855-7041

WWW.GENUINBIOTECH.COM

KD-Validated Anti-Phospho-Smad2 (S250) Recombinant Rabbit Monoclonal Antibody

PAGE 3

Alexa Fluor® 647. Images were taken using Leica stellaris 5. Protein abundance based on laser Intensity and smart gain: Medium. Scale bar: 20 μ m.



Western blotting analysis using anti-Phospho-Smad2 (S250) antibody (Cat#61703). Total cell lysates (30 μ g) from various cell lines were loaded and separated by SDS-PAGE. The blot was incubated with anti-Phospho-Smad2 (S250) antibody (Cat#61703, 1:5,000) and HRP-conjugated goat anti-rabbit secondary antibody (Cat#201, 1:20,000) respectively. Image was developed using FeQ™ ECL Substrate Kit (Cat#226).

SUPPORT

SUPPORT@GENUINBIOTECH.COM
TEL: +1-540-855-7041

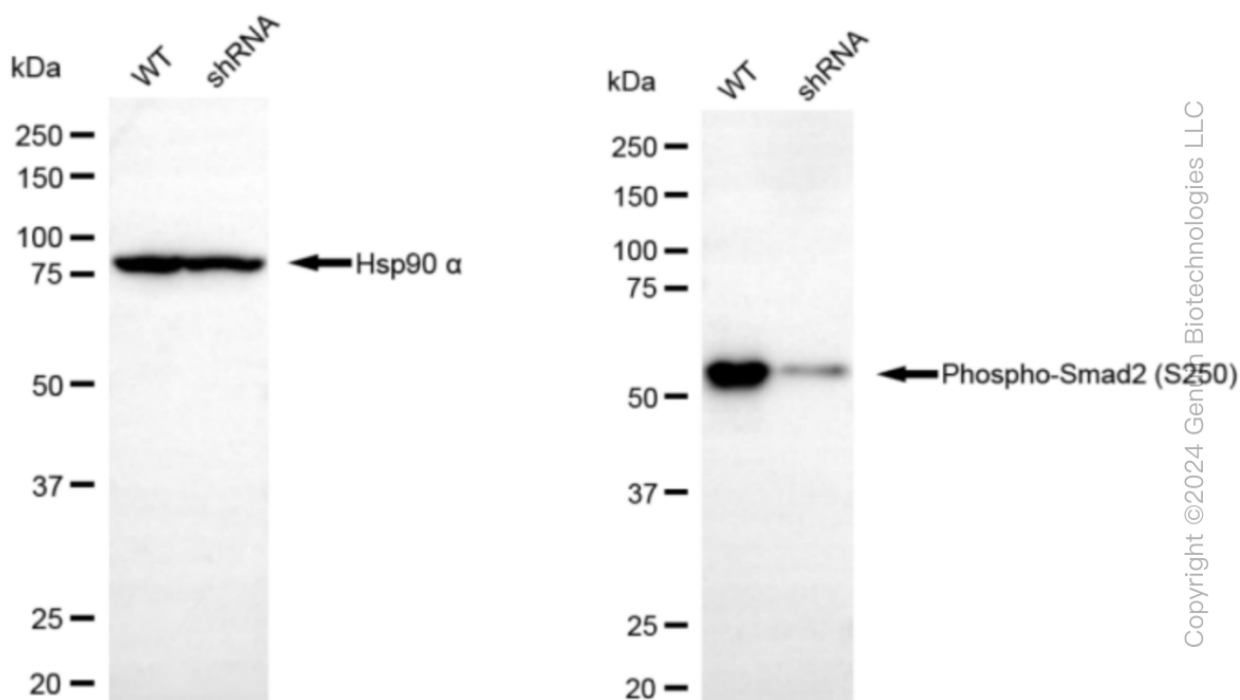
ORDERS

SALES@GENUINBIOTECH.COM
FAX: +1-540-855-7041

WWW.GENUINBIOTECH.COM

KD-Validated Anti-Phospho-Smad2 (S250) Recombinant Rabbit Monoclonal Antibody

PAGE 4



Western blotting analysis using anti-Phospho-Smad2 (S250) antibody (Cat#61703). Phospho-Smad2 (S250) expression in wild type (WT) and Phospho-Smad2 (S250) shRNA knockdown (KD) HT-1080 cells with 30 μ g of total cell lysates. Hsp90 α serves as a loading control. The blot was incubated with anti-Phospho-Smad2 (S250) antibody (Cat#61703, 1:5,000) and HRP-conjugated goat anti-rabbit secondary antibody (Cat#201, 1:20,000) respectively. Image was developed using FeQ™ ECL Substrate Kit (Cat#226).

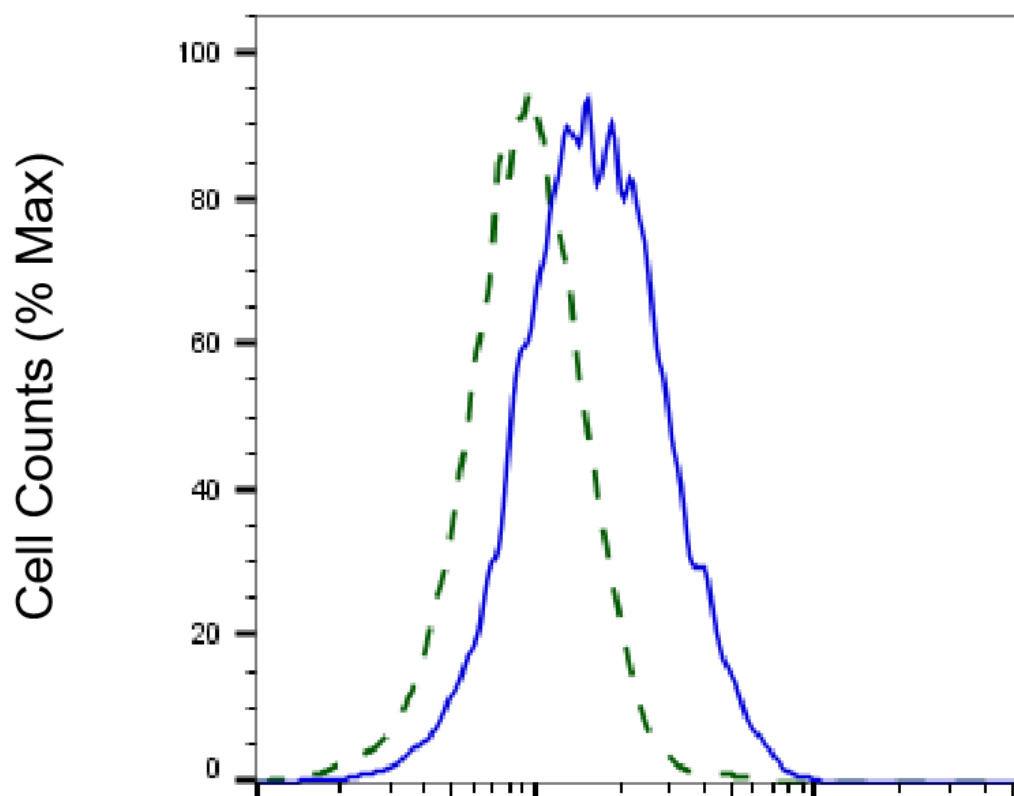
SUPPORT

SUPPORT@GENUINBIOTECH.COM
TEL: +1-540-855-7041

ORDERS

SALES@GENUINBIOTECH.COM
FAX: +1-540-855-7041

WWW.GENUINBIOTECH.COM



Copyright ©2025 Genuin Biotechnologies LLC

Phospho-Smad2 (S250)-Alexa Fluor® 647

Validation of Smad2 knockdown using flow cytometry. Wild-type(WT, Blue) and knockdown(KD, Green) HT-1080 cells were stained with anti-Phospho-Smad2 (S250) antibody (Cat#61703, 1:2,000) and analyzed using BD flow cytometer.