

# KD-Validated Anti-Phospho-Chk1 (S280) Recombinant Rabbit Monoclonal Antibody



**Catalog #: 61704**

## Aliases

CHEK1; Checkpoint Kinase 1; CHK; Serine/Threonine-Protein Kinase Chk1; Cell Cycle Checkpoint Kinase; CHK1 Checkpoint Homolog; EC 2.7.11.1; Checkpoint, S. Pombe, Homolog Of, 1; CHK1 (Checkpoint, S.Pombe) Homolog; CHK1 Checkpoint Homolog (S. Pombe); Checkpoint Kinase-1; EC 2.7.11; OZEMA21; Chk1-S

## Background

Gene Name: CHEK1

NCBI Gene Entry: [1111](#)

UniProt Entry: [O14757](#)

## Application Information

Molecular Weight: Predicted, 54 kDa, observed, 54 kDa

Clonality: Rabbit monoclonal antibody

Clone ID: 25GB3390

Species Reactivity: Human

Applications Tested: Western blotting (WB), flow cytometry (FCM), immunocytochemistry (IC)

## Immunogen

A synthesized peptide derived from human Phospho-Chk1 (S280)

## Isotype

Rabbit IgG

## Storage Buffer

Supplied in PBS (pH 7.4) containing 50% glycerol, and 0.02% sodium azide.

## Storage

Store at -20 °C for one year.

## Recommended Dilutions

Western blotting (WB): 1:1,000-1:5,000

Flow Cytometry (FCM): 1:2,000

Immunocytochemistry (IC): 1:100-1:1,000

---

### SUPPORT

SUPPORT@GENUINBIOTECH.COM  
TEL: +1-540-855-7041

### ORDERS

SALES@GENUINBIOTECH.COM  
FAX: +1-540-855-7041

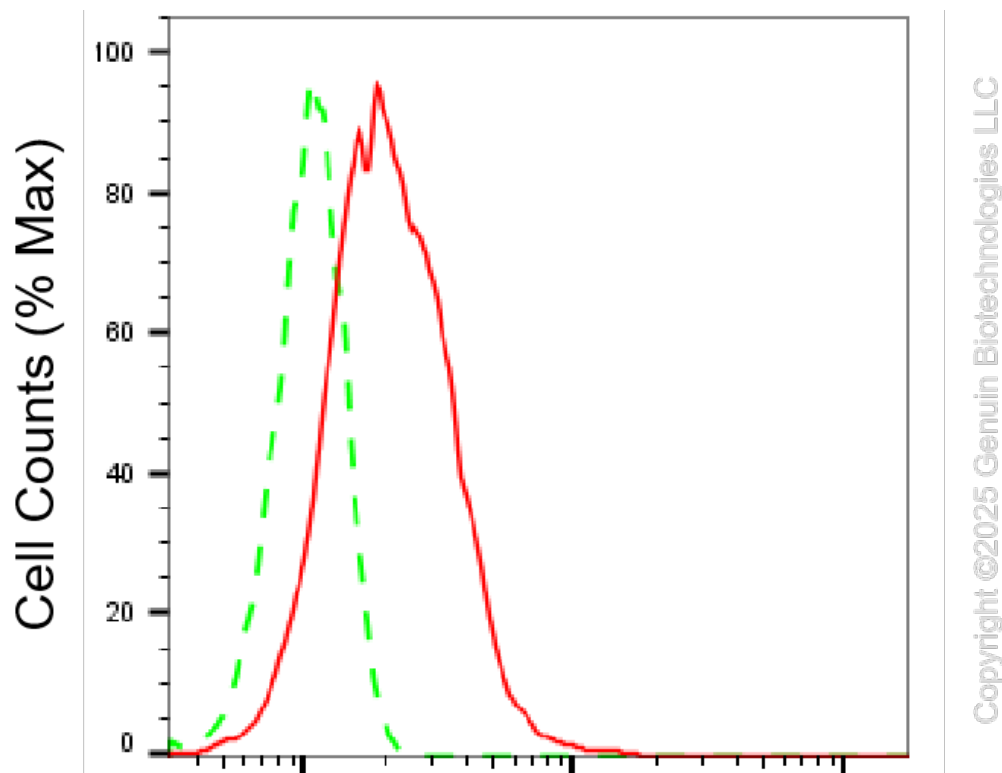
[WWW.GENUINBIOTECH.COM](http://WWW.GENUINBIOTECH.COM)

## KD-Validated Anti-Phospho-Chk1 (S280) Recombinant Rabbit Monoclonal Antibody

PAGE 2

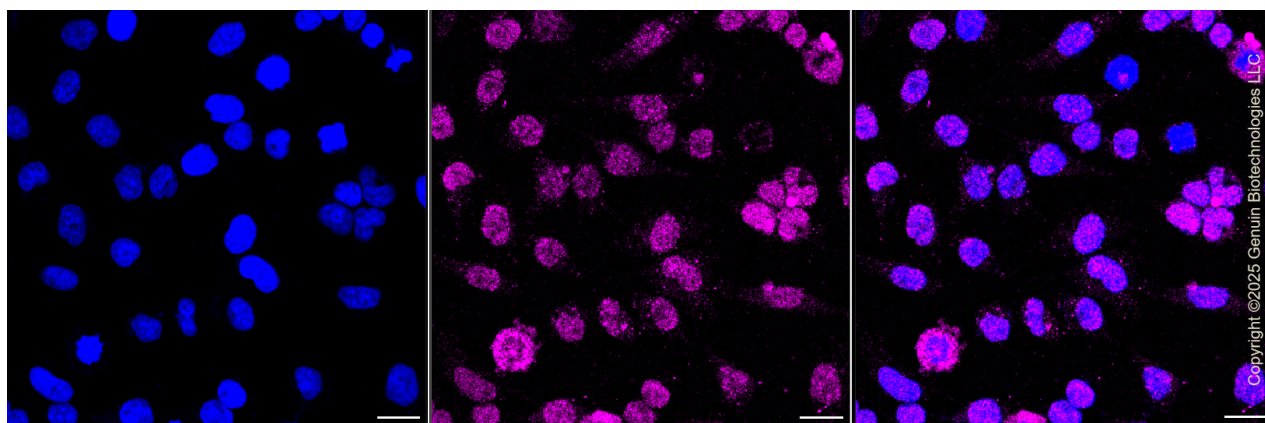
**Note:** This product is for research use only.

### Validation Data



### Phospho-Chk1 (S280)-Alexa Fluor® 647

Flow cytometric analysis of Phospho-Chk1 (S280) expression in HeLa cells using anti-Phospho-Chk1 (S280) antibody (Cat#61704, 1:2,000). Green, isotype control; red, Phospho-Chk1 (S280).



Immunocytochemical staining of HeLa cells with anti-Phospho-Chk1 (S280) antibody (Cat#61704, 1:1,000). Nuclei were stained blue with DAPI; Phospho-Chk1 (S280) was stained magenta with Alexa Fluor® 647. Images were taken using Leica stellaris 5. Protein abundance

#### SUPPORT

SUPPORT@GENUINBIOTECH.COM  
TEL: +1-540-855-7041

#### ORDERS

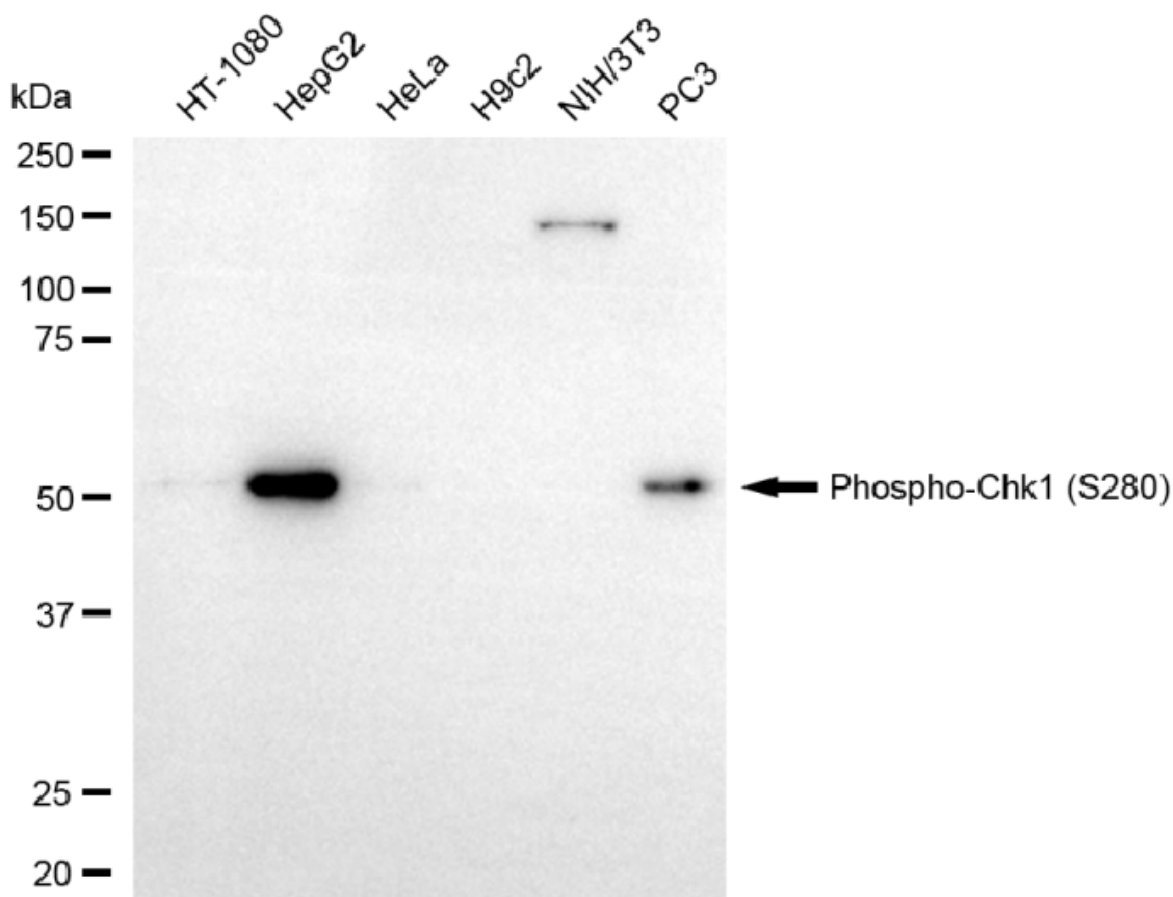
SALES@GENUINBIOTECH.COM  
FAX: +1-540-855-7041

[WWW.GENUINBIOTECH.COM](http://WWW.GENUINBIOTECH.COM)

## KD-Validated Anti-Phospho-Chk1 (S280) Recombinant Rabbit Monoclonal Antibody

PAGE 3

based on laser Intensity and smart gain: Low. Scale bar, 20  $\mu$ m.



Western blotting analysis using anti-phospho-Chk1 (S280) antibody (Cat#61704). Total cell lysates (30  $\mu$ g) from various cell lines were loaded and separated by SDS-PAGE. The blot was incubated with anti-phospho-Chk1 (S280) antibody (Cat#61704, 1:5,000) and HRP-conjugated goat anti rabbit secondary antibody (Cat#201, 1:20,000) respectively. Image was developed using FeQ™ ECL Substrate Kit (Cat#226).

### SUPPORT

SUPPORT@GENUINBIOTECH.COM  
TEL: +1-540-855-7041

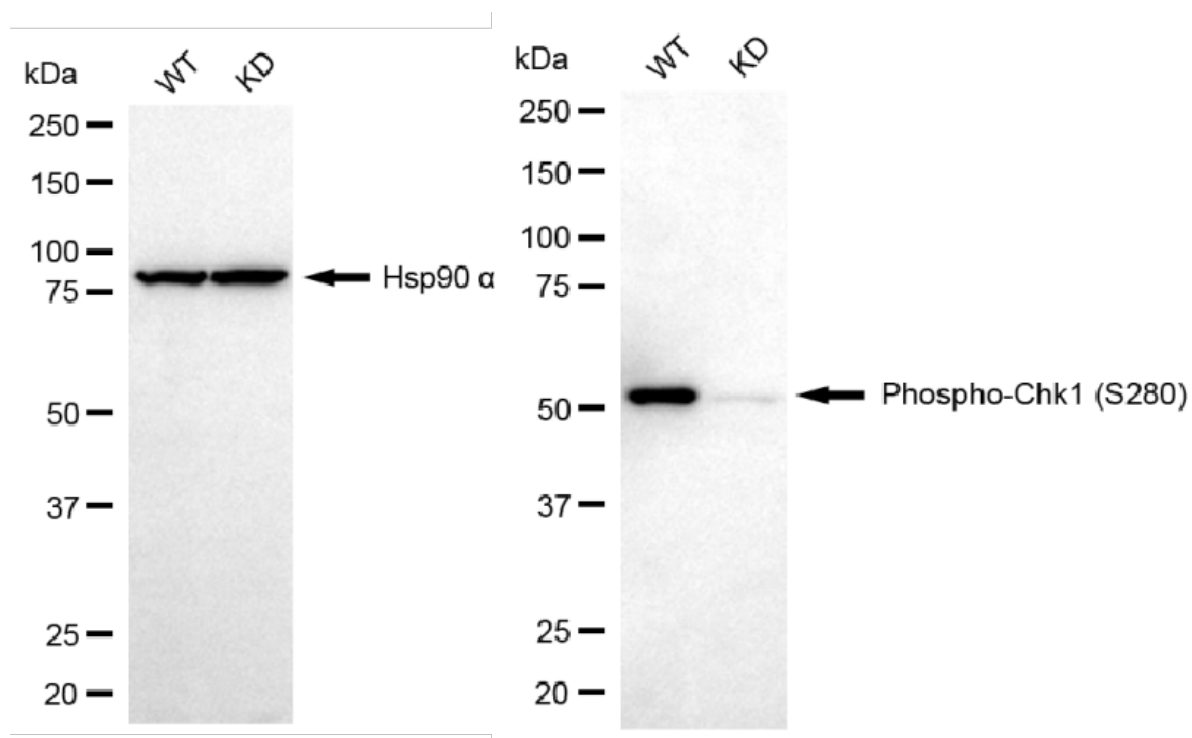
### ORDERS

SALES@GENUINBIOTECH.COM  
FAX: +1-540-855-7041

WWW.GENUINBIOTECH.COM

## KD-Validated Anti-Phospho-Chk1 (S280) Recombinant Rabbit Monoclonal Antibody

PAGE 4



Copyright ©2025 Genuin Biotechnologies LLC

Western blotting analysis using anti-phospho-Chk1 (S280) antibody (Cat#61704). Phospho-Chk1 (S280) expression in wild-type (WT) and CHEK1 knockdown (KD) HeLa cells with 20 µg of total cell lysates. Hsp90 α serves as a loading control. The blot was incubated with anti-phospho-Chk1 (S280) antibody (Cat#61704, 1:5,000) and HRP-conjugated goat anti-rabbit secondary antibody (Cat#201, 1:20,000) respectively. Image was developed using FeQ™ ECL Substrate Kit (Cat#226).

### SUPPORT

SUPPORT@GENUINBIOTECH.COM  
TEL: +1-540-855-7041

### ORDERS

SALES@GENUINBIOTECH.COM  
FAX: +1-540-855-7041

[WWW.GENUINBIOTECH.COM](http://WWW.GENUINBIOTECH.COM)