

# KD-Validated Anti-SMARCC1 Recombinant Rabbit Monoclonal Antibody



**Catalog #: 61706**

## Aliases

SMARCC1; SWI/SNF Related, Matrix Associated, Actin Dependent Regulator Of Chromatin Subfamily C Member 1; BAF155; CRACC1; SRG3; SWI/SNF-Related Matrix-Associated Actin-Dependent Regulator Of Chromatin Subfamily C Member 1; SWI/SNF Complex Subunit SMARCC1; SWI/SNF Complex 155 KDa Subunit; BRG1-Associated Factor 155; Rsc8; SWI/SNF Related, Matrix Associated, Actin Dependent Regulator Of; Chromatin, Subfamily C, Member 1; Mammalian Chromatin Remodeling Complex BRG1-Associated Factor 155; Chromatin Remodeling Complex BAF155 Subunit; HYC5; SWI3; RSC8

## Background

Gene Name: SMARCC1

NCBI Gene Entry: [6599](#)

UniProt Entry: [Q92922](#)

## Application Information

Molecular Weight: Predicted, 123 kDa, observed, 155 kDa

Clonality: Rabbit monoclonal antibody

Clone ID: 23GB4165

Species Reactivity: Human, mouse, rat

Applications Tested: Western blotting (WB), flow cytometry (FCM), immunocytochemistry (IC)

## Immunogen

A synthesized peptide derived from human SMARCC1/BAF155

## Isotype

Rabbit IgG

## Storage Buffer

Supplied in PBS (pH 7.4) containing 50% glycerol, and 0.02% sodium azide.

## Storage

Store at -20 °C for one year.

## Recommended Dilutions

Western Blotting (WB): 1:1,000-1:5,000

Flow Cytometry (FCM): 1:2,000

---

### SUPPORT

SUPPORT@GENUINBIOTECH.COM  
TEL: +1-540-855-7041

### ORDERS

SALES@GENUINBIOTECH.COM  
FAX: +1-540-855-7041

[WWW.GENUINBIOTECH.COM](http://WWW.GENUINBIOTECH.COM)

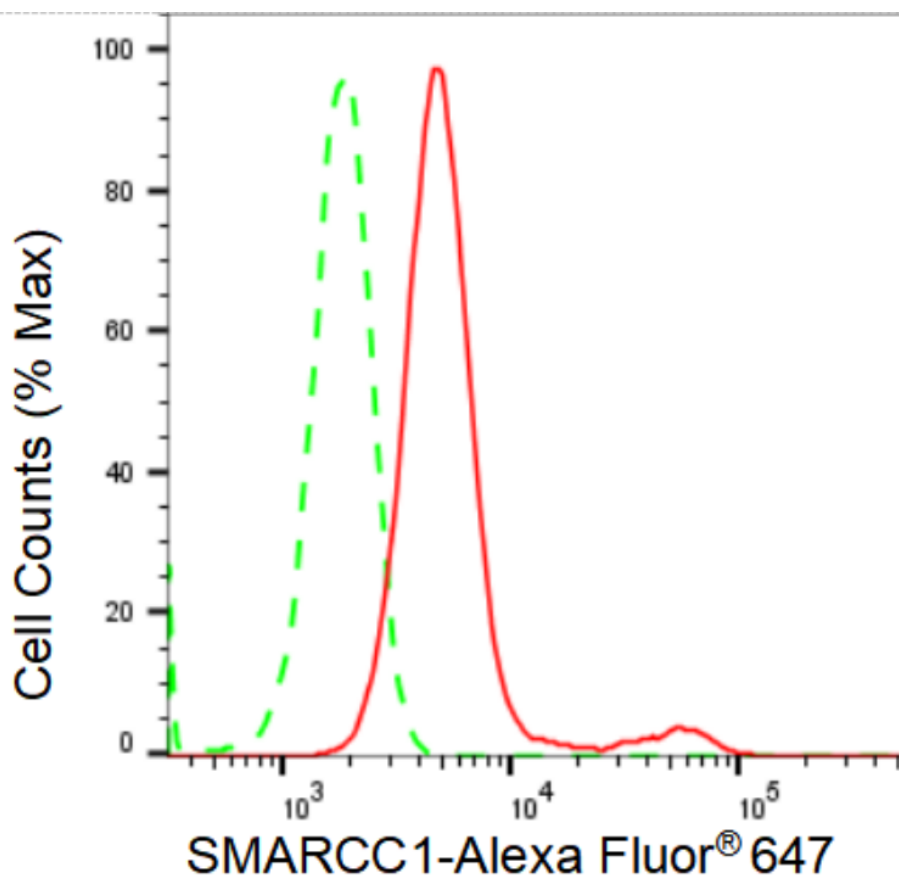
# KD-Validated Anti-SMARCC1 Recombinant Rabbit Monoclonal Antibody

PAGE 2

Immunocytochemistry (IC): 1:100-1:1,000

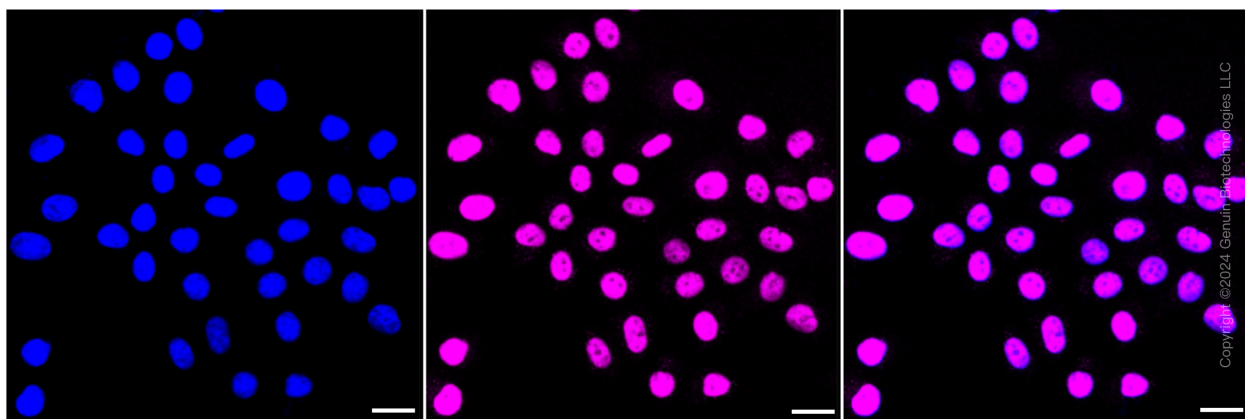
**Note:** This product is for research use only.

## Validation Data



Copyright ©2024 Genuin Biotechnologies LLC

Flow cytometric analysis of SMARCC1 expression in HepG2 cells using SMARCC1 antibody (Cat#61706, 1:2,000). Green, isotype control; red, SMARCC1.



Immunocytochemical staining of HepG2 cells with SMARCC1 antibody (Cat#61706, 1:1,000).

### SUPPORT

SUPPORT@GENUINBIOTECH.COM  
TEL: +1-540-855-7041

### ORDERS

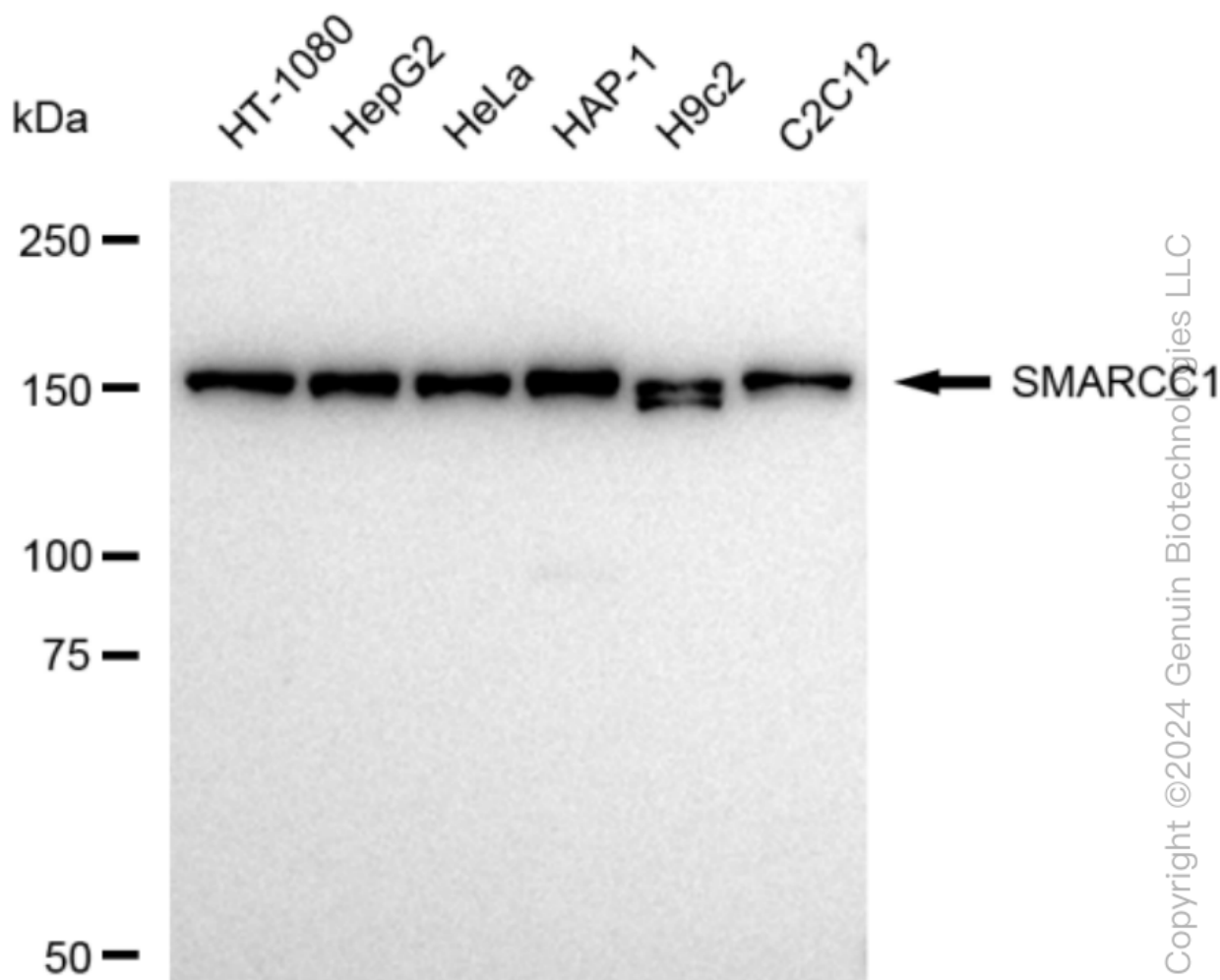
SALES@GENUINBIOTECH.COM  
FAX: +1-540-855-7041

WWW.GENUINBIOTECH.COM

## KD-Validated Anti-SMARCC1 Recombinant Rabbit Monoclonal Antibody

PAGE 3

Nuclei were stained blue with DAPI; SMARCC1 was stained magenta with Alexa Fluor® 647. Images were taken using Leica stellaris 5. Protein abundance based on laser Intensity and smart gain: Medium. Scale bar: 20 µm.



Western blotting analysis using anti-SMARCC1 antibody (Cat#61706). Total cell lysates (30 µg) from various cell lines were loaded and separated by SDS-PAGE. The blot was incubated with anti-SMARCC1 antibody (Cat#61706, 1:5,000) and HRP-conjugated goat anti-rabbit secondary antibody (Cat#201, 1:20,000) respectively. Image was developed using FeQ™ ECL Substrate Kit (Cat#226).

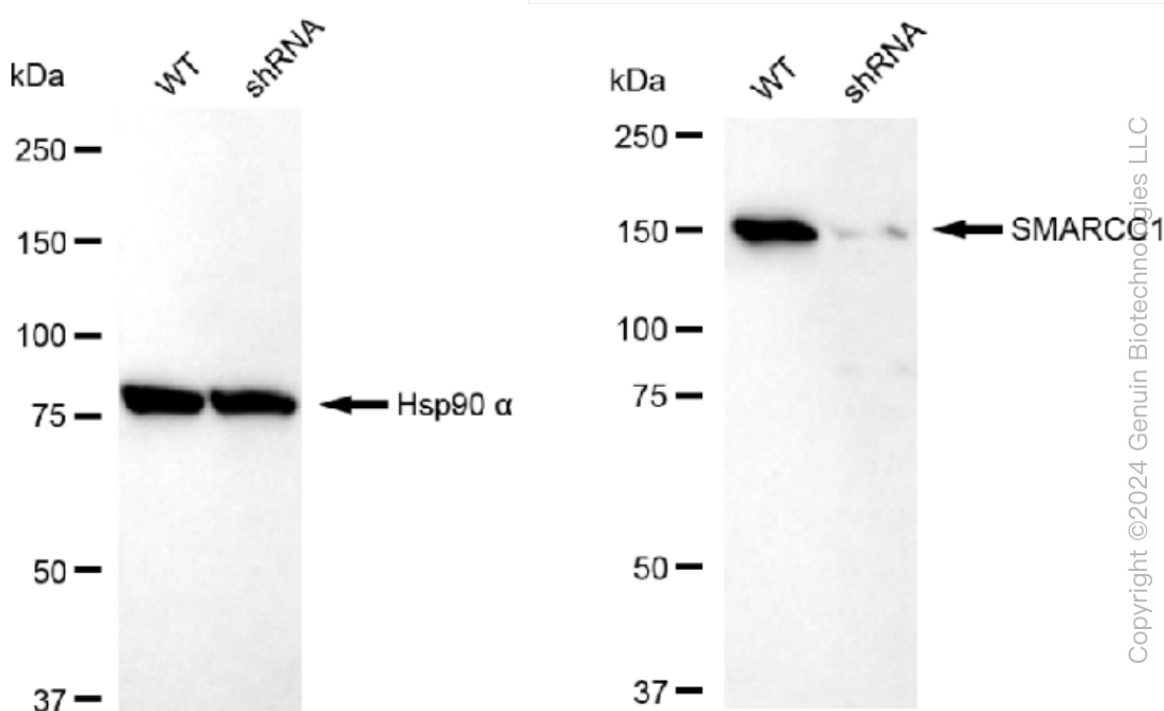
### SUPPORT

SUPPORT@GENUINBIOTECH.COM  
TEL: +1-540-855-7041

### ORDERS

SALES@GENUINBIOTECH.COM  
FAX: +1-540-855-7041

[WWW.GENUINBIOTECH.COM](http://WWW.GENUINBIOTECH.COM)



Western blotting analysis using anti-SMARCC1 antibody (Cat#61706). SMARCC1 expression in wild type (WT) and SMARCC1 shRNA knockdown (KD) HeLa cells with 30 µg of total cell lysates. β-Tubulin serves as a loading control. The blot was incubated with anti-SMARCC1 antibody (Cat#61706, 1:5,000) and HRP-conjugated goat anti-rabbit secondary antibody (Cat#201, 1:20,000) respectively. Image was developed using FeQ™ ECL Substrate Kit (Cat#226).