

KD-Validated Anti-Sortilin 1 Recombinant Rabbit Monoclonal Antibody



Catalog #: 61707

Aliases

SORT1; Sortilin 1; NT3; Gp95; Neurotensin Receptor 3; 100 KDa NT Receptor; Glycoprotein 95; Sortilin; NTR3; LDLCQ6; GP95

Background

Gene Name: SORT1

NCBI Gene Entry: [6272](#)

UniProt Entry: [Q99523](#)

Application Information

Molecular Weight: Predicted, 92 kDa, observed, 92 kDa

Clonality: Rabbit monoclonal antibody

Clone ID: 23GB4170

Species Reactivity: Human

Applications Tested: Western blotting (WB)

Immunogen

A synthesized peptide derived from human Sortilin

Isotype

Rabbit IgG

Storage Buffer

Supplied in PBS (pH 7.4) containing 50% glycerol, and 0.02% sodium azide.

Storage

Store at -20 °C for one year.

Recommended Dilutions

Western Blotting (WB): 1:1,000-1:5,000

Note: This product is for research use only.

Validation Data

SUPPORT

SUPPORT@GENUINBIOTECH.COM
TEL: +1-540-855-7041

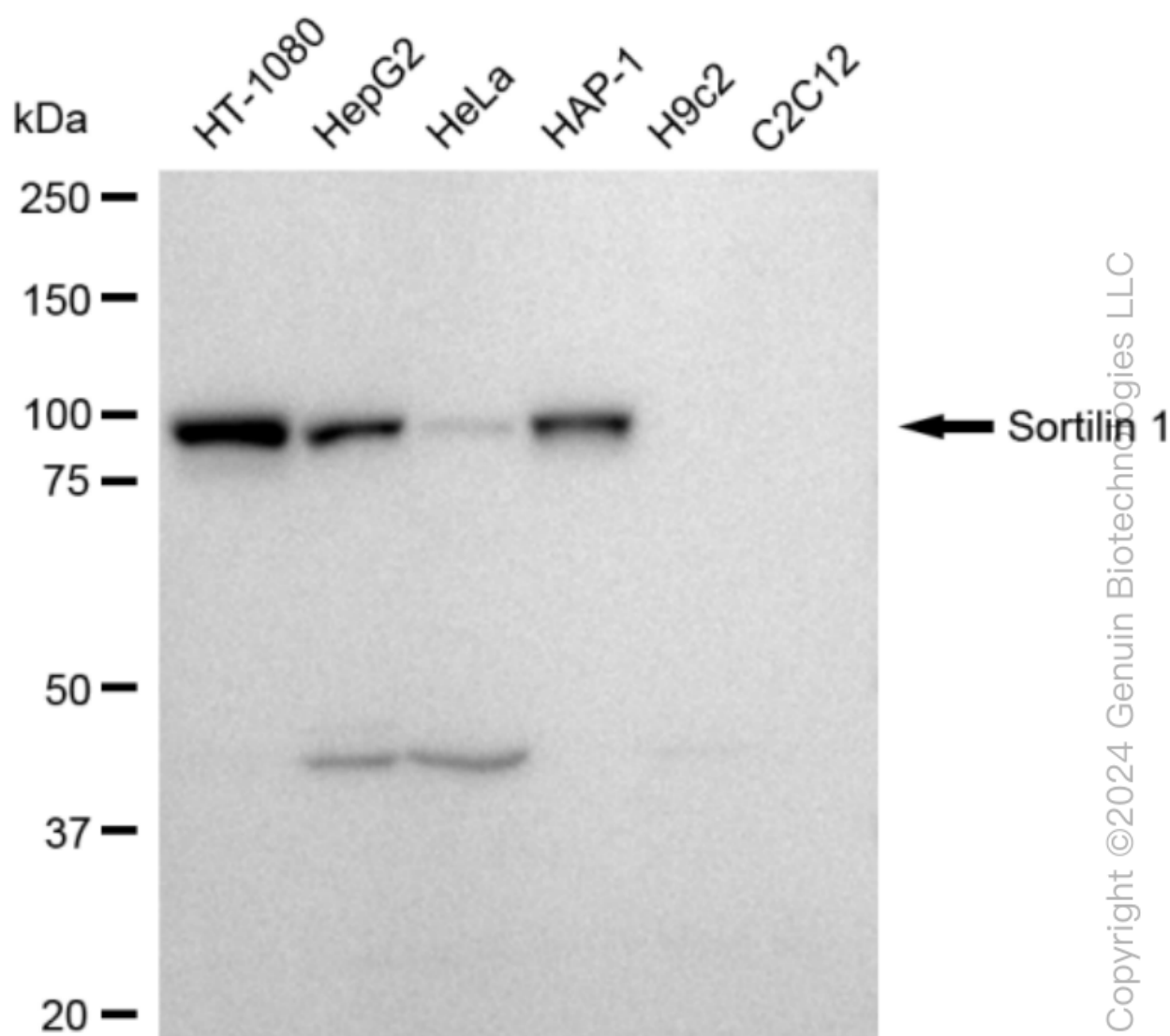
ORDERS

SALES@GENUINBIOTECH.COM
FAX: +1-540-855-7041

WWW.GENUINBIOTECH.COM

KD-Validated Anti-Sortilin 1 Recombinant Rabbit Monoclonal Antibody

PAGE 2



Western blotting analysis using anti-Sortilin 1 antibody (Cat#61707). Total cell lysates (30 μ g) from various cell lines were loaded and separated by SDS-PAGE. The blot was incubated with anti-Sortilin 1 antibody (Cat#61707, 1:5,000) and HRP-conjugated goat anti-rabbit secondary antibody (Cat#201, 1:20,000) respectively. Image was developed using FeQ™ ECL Substrate Kit (Cat#226).

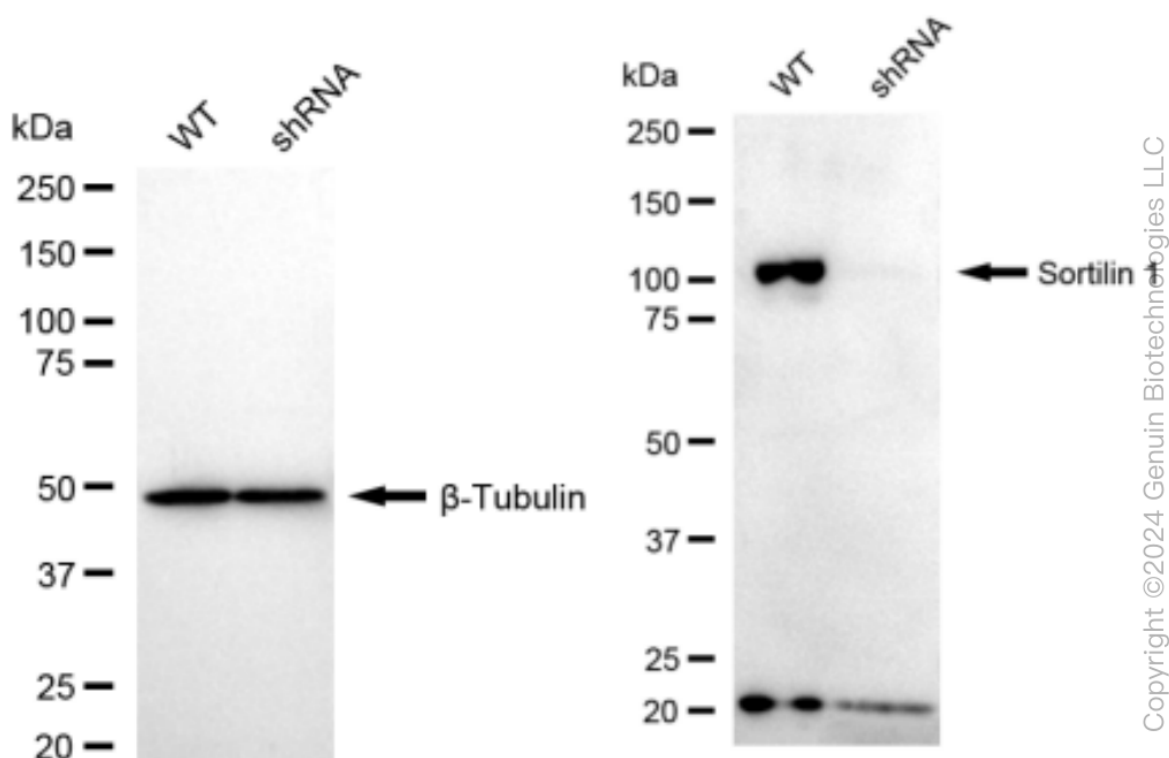
SUPPORT

SUPPORT@GENUINBIOTECH.COM
TEL: +1-540-855-7041

ORDERS

SALES@GENUINBIOTECH.COM
FAX: +1-540-855-7041

WWW.GENUINBIOTECH.COM



Western blotting analysis using anti-Sortilin 1 antibody (Cat#61707). Sortilin 1 expression in wild type (WT) and Sortilin 1 shRNA knockdown (KD) HT-1080 cells with 30 µg of total cell lysates. β-Tubulin serves as a loading control. The blot was incubated with anti-Sortilin 1 antibody (Cat#61707, 1:5,000) and HRP-conjugated goat anti-rabbit secondary antibody (Cat#201, 1:20,000) respectively. Image was developed using FeQ™ ECL Substrate Kit (Cat#226).