

# KD-Validated Anti-SPINK5 Recombinant Rabbit Monoclonal Antibody



**Catalog #: 61709**

## Aliases

SPINK5; Serine Peptidase Inhibitor Kazal Type 5; LEKTI; VAKTI; LETKI; NETS; NS; Lympho-Epithelial Kazal-Type-Related Inhibitor; Lymphoepithelial Kazal-Type-Related Inhibitor; Serine Protease Inhibitor Kazal-Type 5; FLJ21544; FLJ97536; FLJ97596 ; FLJ99794; Serine Protease Inhibitor, Kazal Type 5; DKFZp686K19184; DKFZP686K19184

## Background

Gene Name: SPINK5

NCBI Gene Entry: [11005](#)

UniProt Entry: [Q9NQ38](#)

## Application Information

Molecular Weight: Predicted, 121 kDa, observed, 121 kDa

Clonality: Rabbit monoclonal antibody

Clone ID: 23GB4180

Species Reactivity: Human, mouse, rat

Applications Tested: Western blotting (WB), flow cytometry (FCM), immunocytochemistry (IC)

## Immunogen

A synthesized peptide derived from human SPINK5 / LEKTI

## Isotype

Rabbit IgG

## Storage Buffer

Supplied in PBS (pH 7.4) containing 50% glycerol, and 0.02% sodium azide.

## Storage

Store at -20 °C for one year.

## Recommended Dilutions

Western Blotting (WB): 1:1,000-1:5,000

Flow Cytometry (FCM): 1:2,000

Immunocytochemistry (IC): 1:100-1:1,000

---

### SUPPORT

SUPPORT@GENUINBIOTECH.COM  
TEL: +1-540-855-7041

### ORDERS

SALES@GENUINBIOTECH.COM  
FAX: +1-540-855-7041

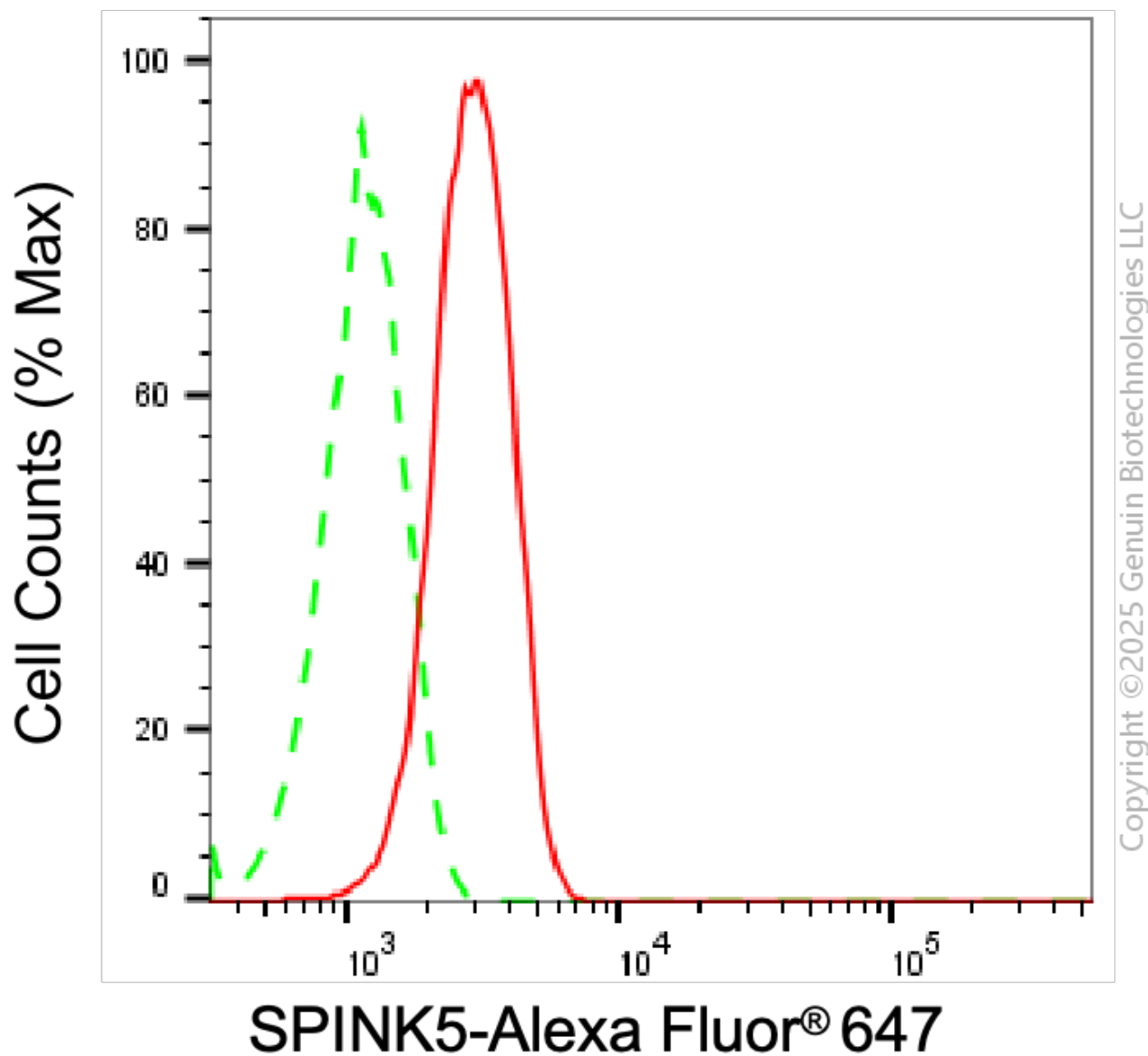
[WWW.GENUINBIOTECH.COM](http://WWW.GENUINBIOTECH.COM)

## KD-Validated Anti-SPINK5 Recombinant Rabbit Monoclonal Antibody

PAGE 2

**Note:** This product is for research use only.

### Validation Data



Flow cytometric analysis of SPINK5 expression in HT-1080 cells using anti-SPINK5 antibody (Cat#61709, 1:2,000). Green, isotype control; red, SPINK5.

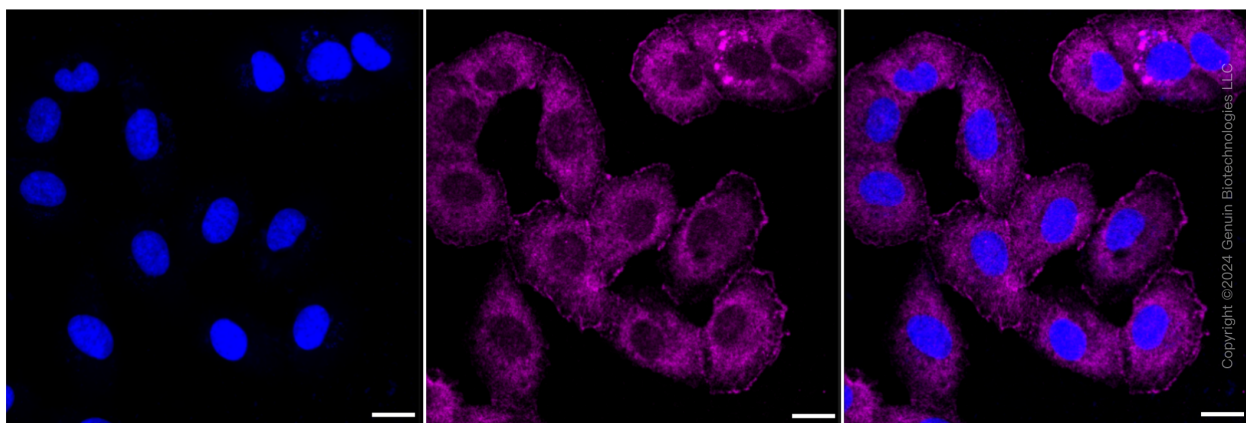
#### SUPPORT

SUPPORT@GENUINBIOTECH.COM  
TEL: +1-540-855-7041

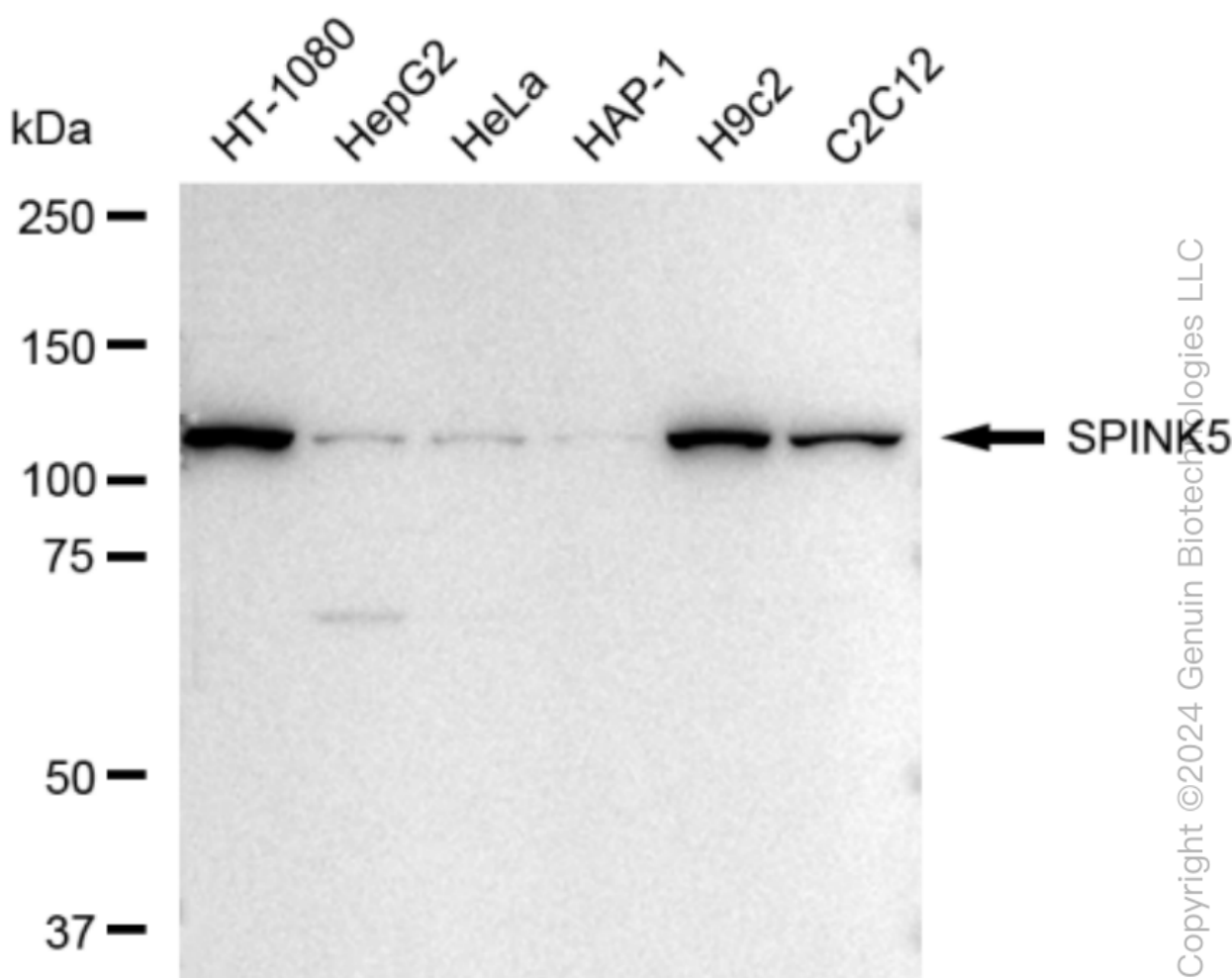
#### ORDERS

SALES@GENUINBIOTECH.COM  
FAX: +1-540-855-7041

[WWW.GENUINBIOTECH.COM](http://WWW.GENUINBIOTECH.COM)



Immunocytochemical staining of HT-1080 cells with SPINK5 antibody (Cat#61709, 1:1,000). Nuclei were stained blue with DAPI; SPINK5 was stained magenta with Alexa Fluor® 647. Images were taken using Leica stellaris 5. Protein abundance based on laser Intensity and smart gain: Medium. Scale bar: 20 µm.



Western blotting analysis using anti-SPINK5 antibody (Cat#61709). Total cell lysates (30 µg) from various cell lines were loaded and separated by SDS-PAGE. The blot was incubated with

**SUPPORT**

SUPPORT@GENUINBIOTECH.COM  
TEL: +1-540-855-7041

**ORDERS**

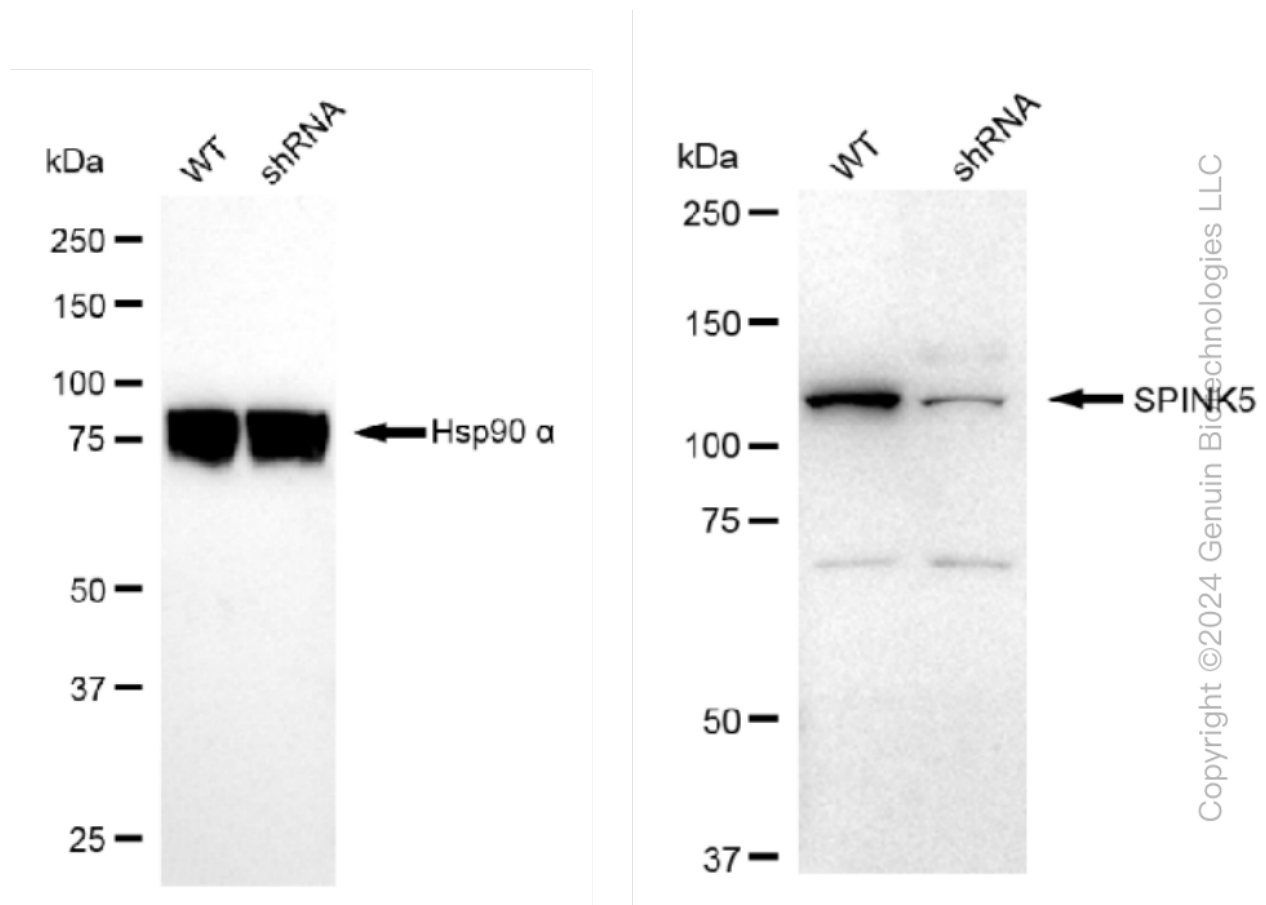
SALES@GENUINBIOTECH.COM  
FAX: +1-540-855-7041

**WWW.GENUINBIOTECH.COM**

## KD-Validated Anti-SPINK5 Recombinant Rabbit Monoclonal Antibody

PAGE 4

anti-SPINK5 antibody (Cat#61709, 1:5,000) and HRP-conjugated goat anti-rabbit secondary antibody (Cat#201, 1:20,000) respectively. Image was developed using FeQ™ ECL Substrate Kit (Cat#226).



Western blotting analysis using anti-SPINK5 antibody (Cat#61709). SPINK5 expression in wild type (WT) and SPINK5 shRNA knockdown (KD) HeLa cells with 30 µg of total cell lysates. β-Tubulin serves as a loading control. The blot was incubated with anti-SPINK5 antibody (Cat#61709, 1:5,000) and HRP-conjugated goat anti-rabbit secondary antibody (Cat#201, 1:20,000) respectively. Image was developed using FeQ™ ECL Substrate Kit (Cat#226).

### SUPPORT

SUPPORT@GENUINBIOTECH.COM  
TEL: +1-540-855-7041

### ORDERS

SALES@GENUINBIOTECH.COM  
FAX: +1-540-855-7041

[WWW.GENUINBIOTECH.COM](http://WWW.GENUINBIOTECH.COM)