

KD-Validated Anti-Bone Marrow Stromal Cell Antigen 2 Recombinant Rabbit Monoclonal



Catalog #: 61711

Aliases

BST2; Bone Marrow Stromal Cell Antigen 2; Tetherin; BST-2; HM1.24; CD317; Bone Marrow Stromal Antigen; Antiviral Factor Tetherin; HM1.24 Antigen; CD317 Antigen; NPC-A-7

Background

Gene Name: BST2

NCBI Gene Entry: [684](#)

UniProt Entry: [Q10589](#)

Application Information

Molecular Weight: Predicted, 20 kDa; observed, 28-40 kDa

Clonality: Rabbit monoclonal antibody

Clone ID: 25GB3405

Species Reactivity: Human, mouse

Applications Tested: Western blotting (WB), flow cytometry (FCM), immunocytochemistry (IC)

Immunogen

A synthesized peptide derived from human BST2

Isotype

Rabbit IgG

Storage Buffer

Supplied in PBS (pH 7.4) containing 50% glycerol, and 0.02% sodium azide.

Storage

Store at -20 °C for one year.

Recommended Dilutions

Western Blotting (WB): 1:1,000-1:5,000

Flow Cytometry (FCM): 1:2,000

Immunocytochemistry (IC): 1:100-1:1,000

Note: This product is for research use only.

Validation Data

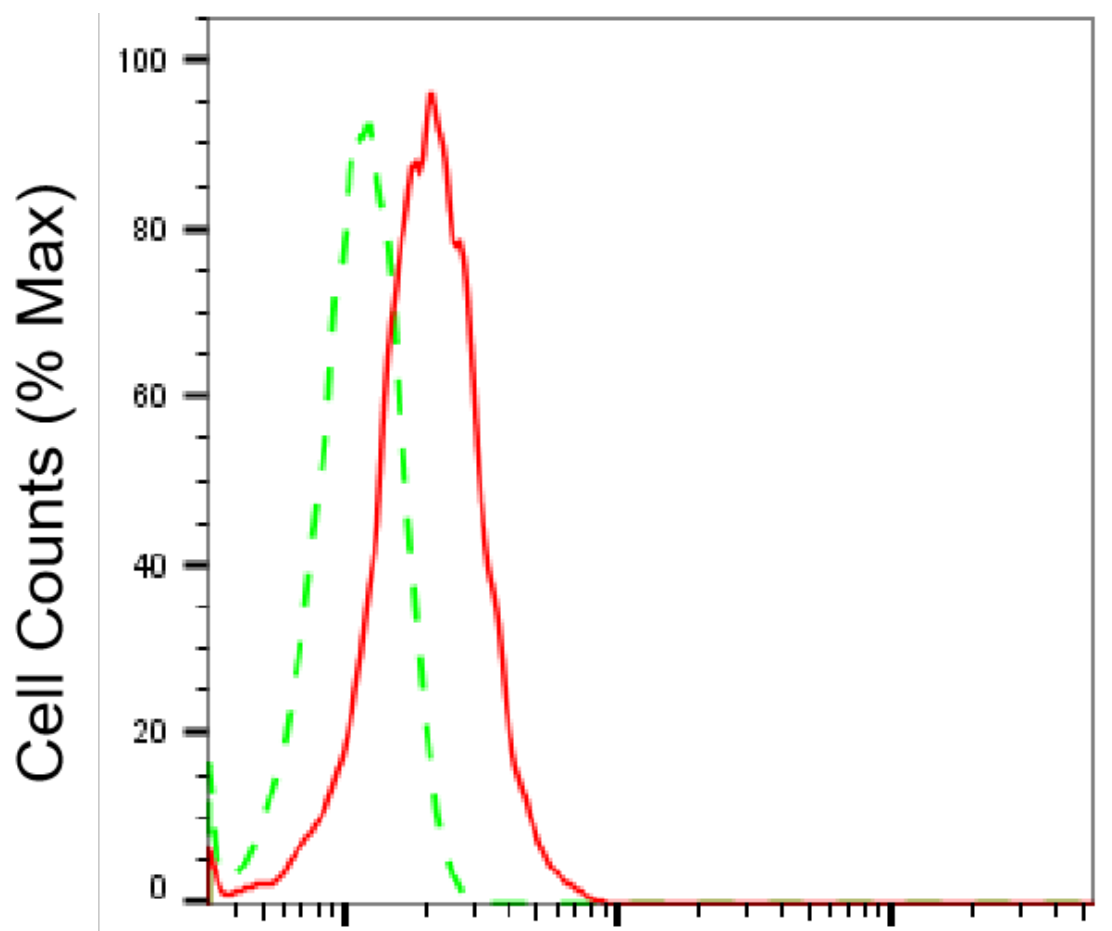
SUPPORT

SUPPORT@GENUINBIOTECH.COM
TEL: +1-540-855-7041

ORDERS

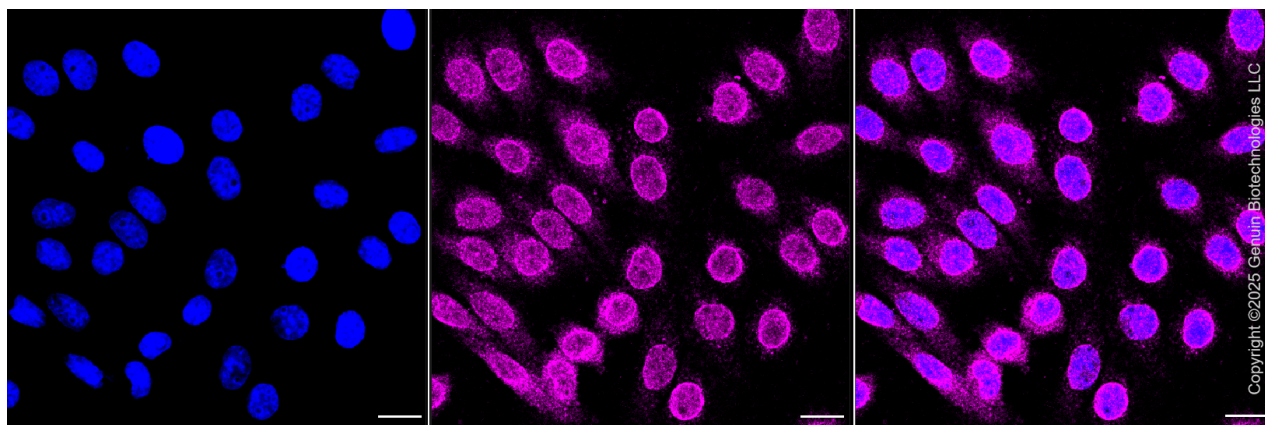
SALES@GENUINBIOTECH.COM
FAX: +1-540-855-7041

WWW.GENUINBIOTECH.COM



Bone marrow stromal cell antigen 2- Alexa Fluor® 647

Flow cytometric analysis of Bone marrow stromal cell antigen 2 expression in HepG2 cells using anti-Bone marrow stromal cell antigen 2 antibody (Cat#61711, 1:2,000). Green, isotype control; red, Bone marrow stromal cell antigen 2.



SUPPORT

SUPPORT@GENUINBIOTECH.COM
TEL: +1-540-855-7041

ORDERS

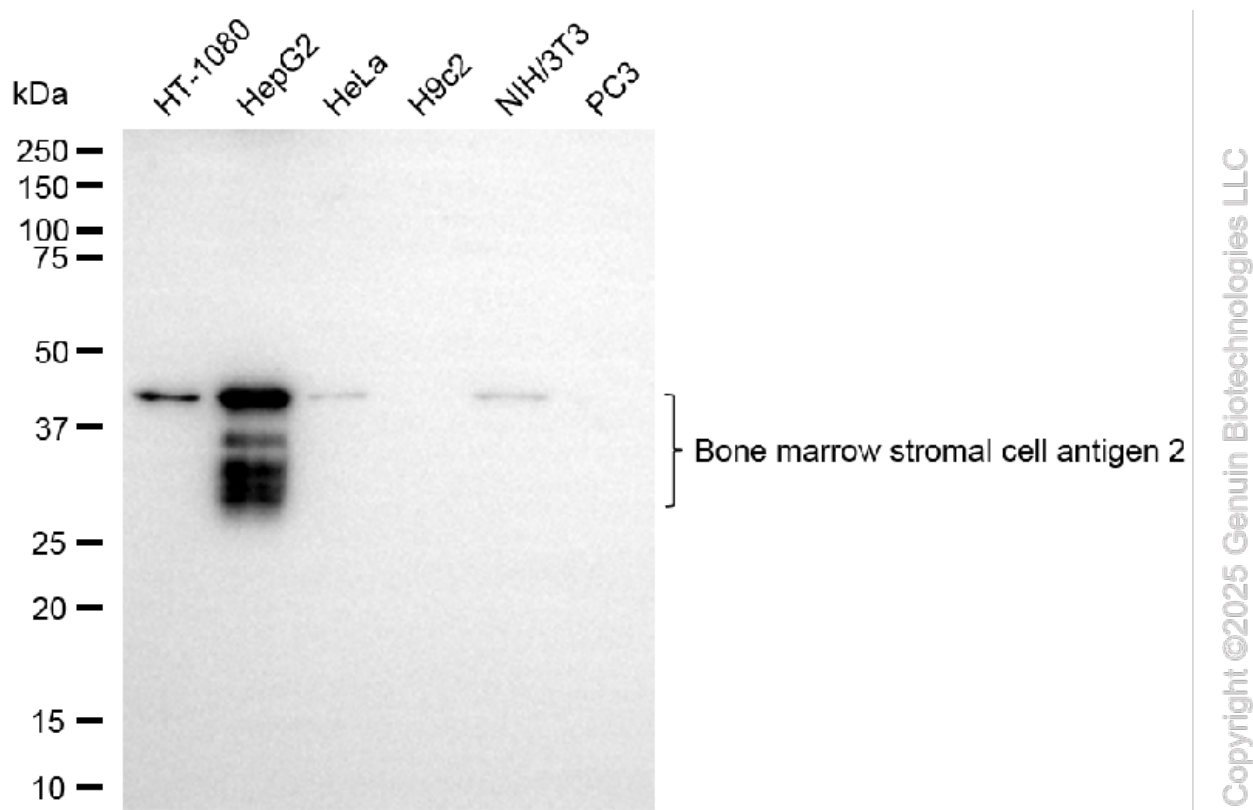
SALES@GENUINBIOTECH.COM
FAX: +1-540-855-7041

WWW.GENUINBIOTECH.COM

KD-Validated Anti-Bone Marrow Stromal Cell Antigen 2 Recombinant Rabbit Monoclonal

PAGE 3

Immunocytochemical staining of HepG2 cells with anti-Bone marrow stromal cell antigen 2 antibody (Cat#61711, 1:1,000). Nuclei were stained blue with DAPI; Bone marrow stromal cell antigen 2 was stained magenta with Alexa Fluor® 647. Images were taken using Leica stellaris 5. Protein abundance based on laser Intensity and smart gain: Medium. Scale bar, 20 µm.



Western blotting analysis using anti-bone marrow stromal cell antigen 2 antibody (Cat#61711). Total cell lysates (30 µg) from various cell lines were loaded and separated by SDS-PAGE. The blot was incubated with anti-bone marrow stromal cell antigen 2 antibody (Cat#61711, 1:5,000) and HRP-conjugated goat anti-rabbit secondary antibody (Cat#201, 1:20,000) respectively. Image was developed using FeQ™ ECL Substrate Kit (Cat#226).

SUPPORT

SUPPORT@GENUINBIOTECH.COM
TEL: +1-540-855-7041

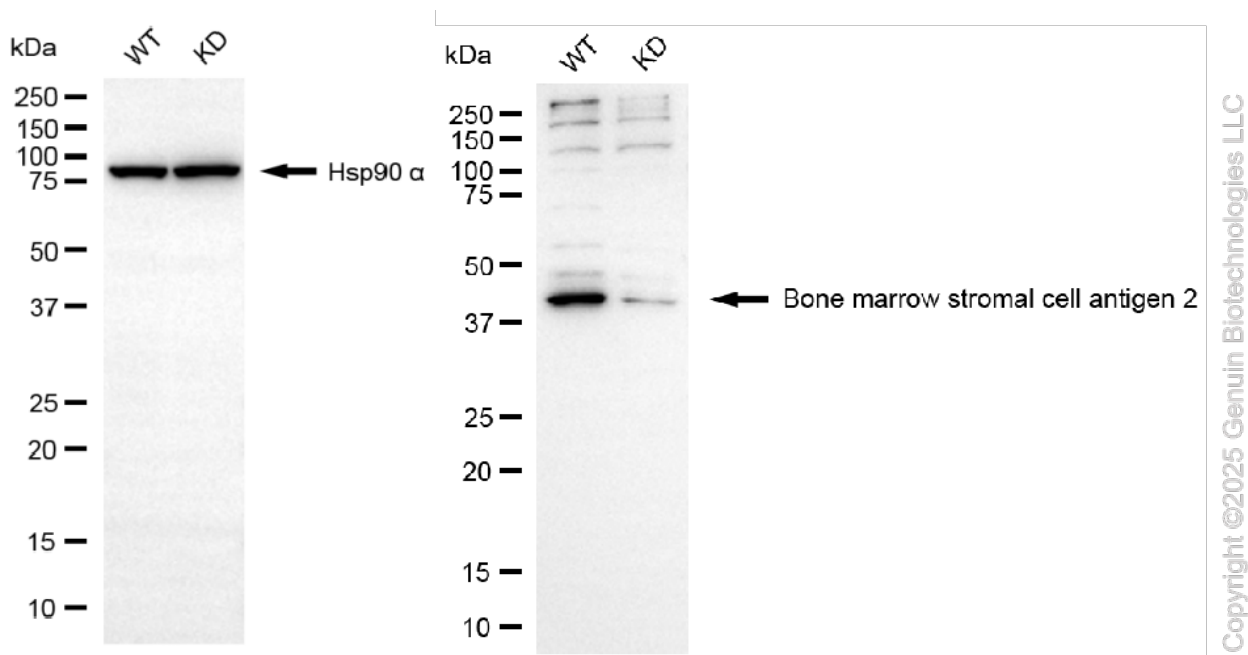
ORDERS

SALES@GENUINBIOTECH.COM
FAX: +1-540-855-7041

WWW.GENUINBIOTECH.COM

KD-Validated Anti-Bone Marrow Stromal Cell Antigen 2 Recombinant Rabbit Monoclonal

PAGE 4



Western blotting analysis using anti-bone marrow stromal cell antigen 2 antibody (Cat#61711). Bone marrow stromal cell antigen 2 expression in wild-type (WT) and bone marrow stromal cell antigen 2 (BST2) knockdown (KD) 293T cells with 30 μ g of total cell lysates. Hsp90 α serves as a loading control. The blot was incubated with anti-bone marrow stromal cell antigen 2 antibody (Cat#61711, 1:5,000) and HRP-conjugated goat anti-rabbit secondary antibody (Cat#201, 1:20,000) respectively. Image was developed using FeQ™ ECL Substrate Kit (Cat#226).

SUPPORT

SUPPORT@GENUINBIOTECH.COM
TEL: +1-540-855-7041

ORDERS

SALES@GENUINBIOTECH.COM
FAX: +1-540-855-7041

WWW.GENUINBIOTECH.COM