

KD-Validated Anti-Phospho-STAT1 (S727) Recombinant Rabbit Monoclonal Antibody



Catalog #: 61712

Aliases

STAT1; Signal Transducer And Activator Of Transcription 1; Transcription Factor ISGF-3 Components P91/P84; STAT91; ISGF-3; Signal Transducer And Activator Of Transcription 1-Alpha/Beta; Signal Transducer And Activator Of Transcription 1, 91kDa; Signal Transducer And Activator Of Transcription 1, 91kD; CANDF7; IMD31A; IMD31B; IMD31C

Background

Gene Name: STAT1

NCBI Gene Entry: [6772](#)

UniProt Entry: [P42224](#)

Application Information

Molecular Weight: Predicted, 87 kDa, observed, 87 kDa

Clonality: Rabbit monoclonal antibody

Clone ID: 23GB4190

Species Reactivity: Human, mouse, rat

Applications Tested: Western blotting (WB), flow cytometry (FCM), immunocytochemistry (IC)

Immunogen

A synthesized peptide derived from human Phospho-STAT1 (S727)

Isotype

Rabbit IgG

Storage Buffer

Supplied in PBS (pH 7.4) containing 50% glycerol, and 0.02% sodium azide.

Storage

Store at -20 °C for one year.

Recommended Dilutions

Western Blotting (WB): 1:1,000-1:5,000

Flow Cytometry (FCM): 1:2,000

Immunocytochemistry (IC): 1:100-1:1,000

SUPPORT

SUPPORT@GENUINBIOTECH.COM
TEL: +1-540-855-7041

ORDERS

SALES@GENUINBIOTECH.COM
FAX: +1-540-855-7041

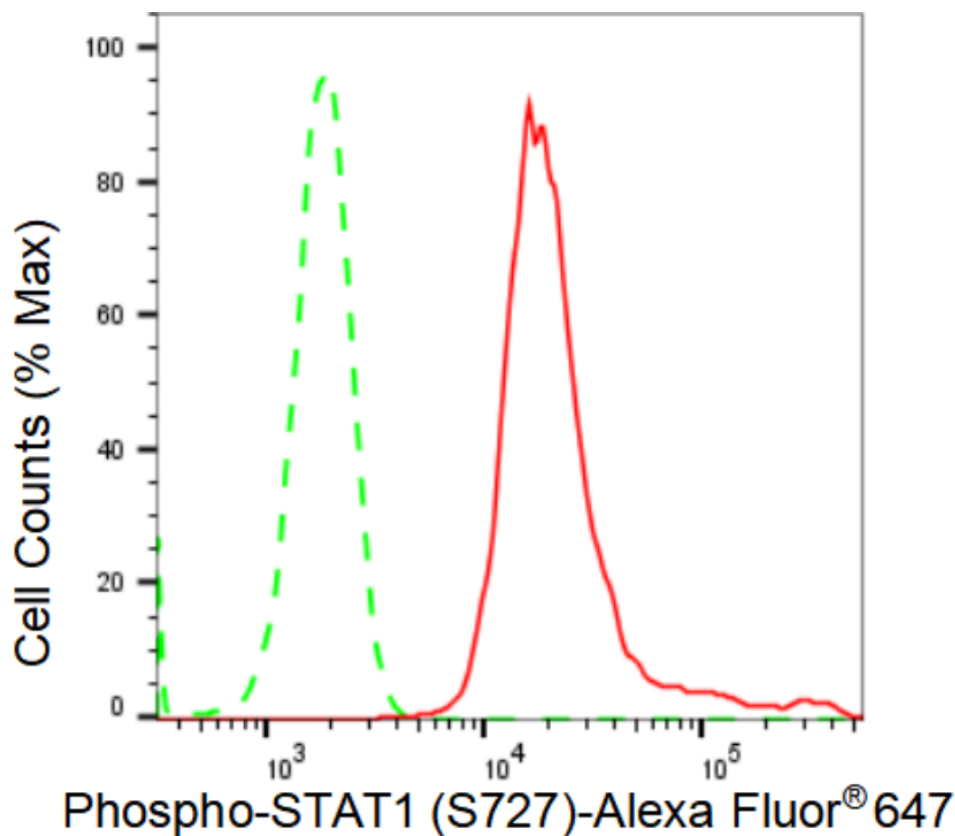
WWW.GENUINBIOTECH.COM

KD-Validated Anti-Phospho-STAT1 (S727) Recombinant Rabbit Monoclonal Antibody

PAGE 2

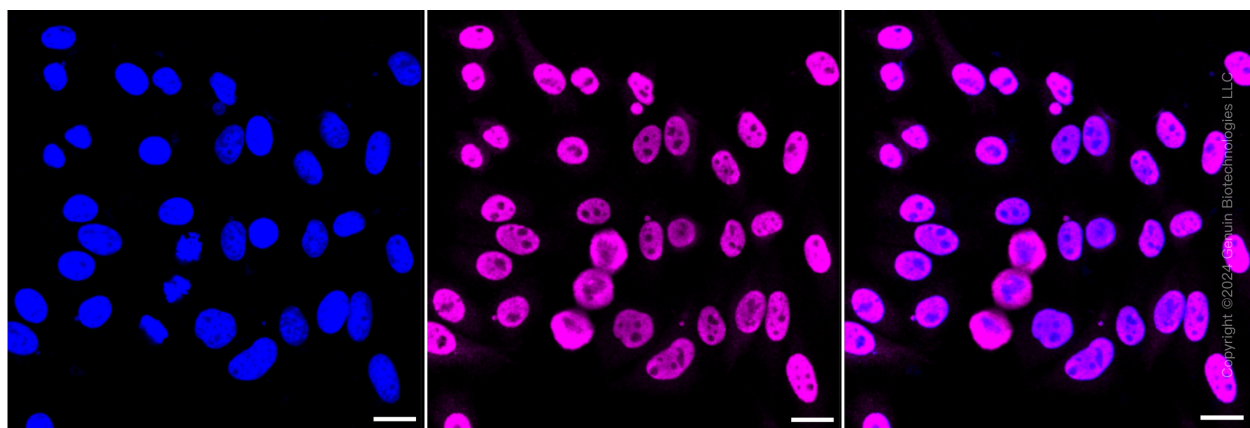
Note: This product is for research use only.

Validation Data



Copyright ©2024 Genuin Biotechnologies LLC

Flow cytometric analysis of Phospho-STAT1 (S727) expression in HepG2 cells using Phospho-STAT1 (S727) antibody (Cat#61712, 1:2,000). Green, isotype control; red, Phospho-STAT1 (S727).



Copyright ©2024 Genuin Biotechnologies LLC

Immunocytochemical staining of HepG2 cells with Phospho-STAT1 (S727) antibody (Cat#61712, 1:1,000). Nuclei were stained blue with DAPI; Phospho-STAT1 (S727) was stained magenta with Alexa Fluor® 647. Images were taken using Leica stellaris 5. Protein abundance based on laser

SUPPORT

SUPPORT@GENUINBIOTECH.COM
TEL: +1-540-855-7041

ORDERS

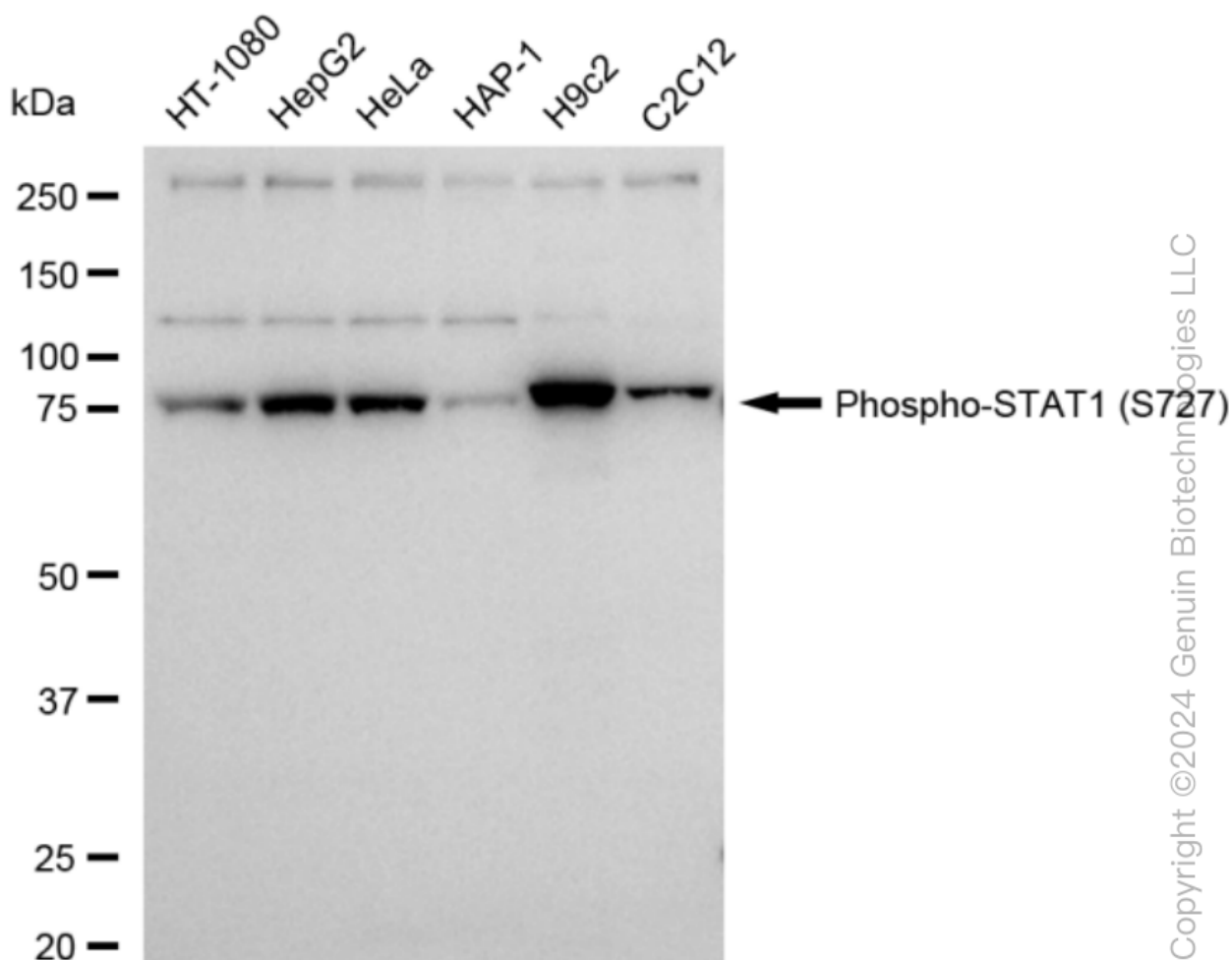
SALES@GENUINBIOTECH.COM
FAX: +1-540-855-7041

WWW.GENUINBIOTECH.COM

KD-Validated Anti-Phospho-STAT1 (S727) Recombinant Rabbit Monoclonal Antibody

PAGE 3

Intensity and smart gain: High. Scale bar: 20 μ m.



Western blotting analysis using anti-Phospho-STAT1 (S727) antibody (Cat#61712). Total cell lysates (30 μ g) from various cell lines were loaded and separated by SDS-PAGE. The blot was incubated with anti-Phospho-STAT1 (S727) antibody (Cat#61712, 1:5,000) and HRP-conjugated goat anti-rabbit secondary antibody (Cat#201, 1:20,000) respectively. Image was developed using FeQ™ ECL Substrate Kit (Cat#226).

SUPPORT

SUPPORT@GENUINBIOTECH.COM
TEL: +1-540-855-7041

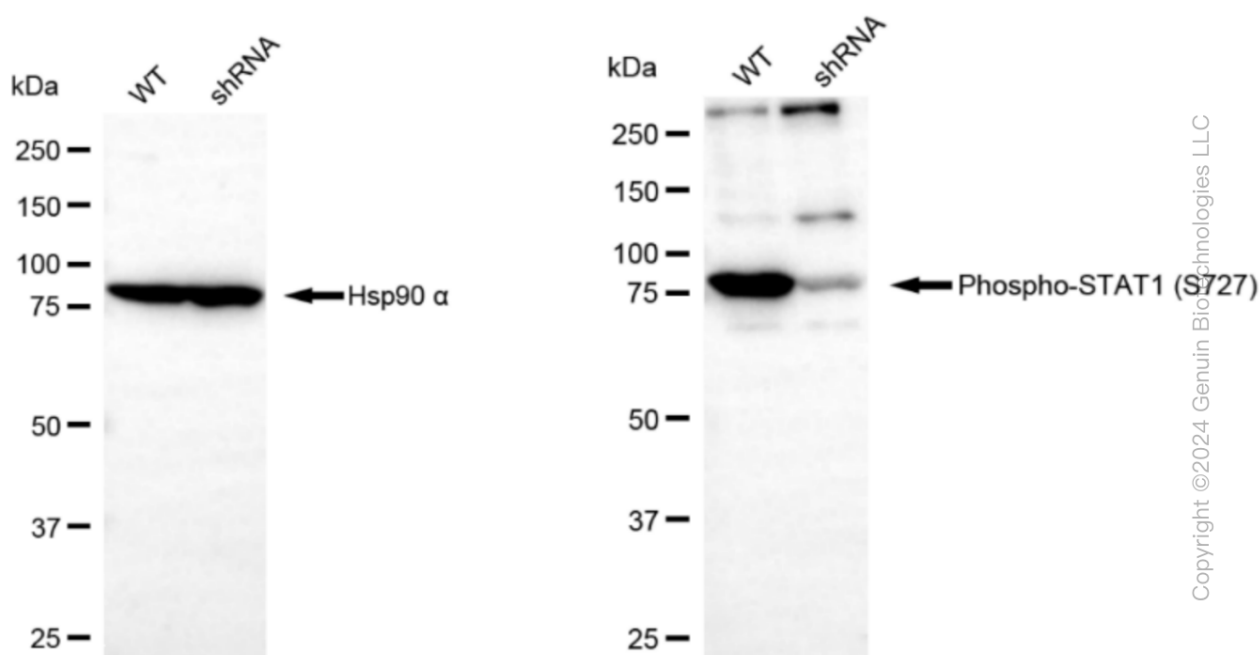
ORDERS

SALES@GENUINBIOTECH.COM
FAX: +1-540-855-7041

WWW.GENUINBIOTECH.COM

KD-Validated Anti-Phospho-STAT1 (S727) Recombinant Rabbit Monoclonal Antibody

PAGE 4



Copyright ©2024 Genuin Biotechnologies LLC

Western blotting analysis using anti-Phospho-STAT1 (S727) antibody (Cat#61712). Phospho-STAT1 (S727) expression in wild type (WT) and Phospho-STAT1 (S727) shRNA knockdown (KD) HeLa cells with 30 µg of total cell lysates. β -Tubulin serves as a loading control. The blot was incubated with anti-Phospho-STAT1 (S727) antibody (Cat#61712, 1:5,000) and HRP-conjugated goat anti-rabbit secondary antibody (Cat#201, 1:20,000) respectively. Image was developed using FeQ™ ECL Substrate Kit (Cat#226).

SUPPORT

SUPPORT@GENUINBIOTECH.COM
TEL: +1-540-855-7041

ORDERS

SALES@GENUINBIOTECH.COM
FAX: +1-540-855-7041

WWW.GENUINBIOTECH.COM