

# KD-Validated Anti-STAT1 Recombinant Rabbit Monoclonal Antibody



**Catalog #: 61713**

## Aliases

STAT1; Signal Transducer And Activator Of Transcription 1; Transcription Factor ISGF-3 Components P91/P84; STAT91; ISGF-3; Signal Transducer And Activator Of Transcription 1-Alpha/Beta; Signal Transducer And Activator Of Transcription 1, 91kDa; Signal Transducer And Activator Of Transcription 1, 91kD; CANDF7; IMD31A; IMD31B; IMD31C

## Background

Gene Name: STAT1

NCBI Gene Entry: [6772](#)

UniProt Entry: [P42224](#)

## Application Information

Molecular Weight: Predicted, 87 kDa, observed, 87 kDa

Clonality: Rabbit monoclonal antibody

Clone ID: 23GB4195

Species Reactivity: Human, mouse, rat

Applications Tested: Western blotting (WB), flow cytometry (FCM), immunocytochemistry (IC)

## Immunogen

A synthesized peptide derived from human STAT1 alpha

## Isotype

Rabbit IgG

## Storage Buffer

Supplied in PBS (pH 7.4) containing 50% glycerol, and 0.02% sodium azide.

## Storage

Store at -20 °C for one year.

## Recommended Dilutions

Western Blotting (WB): 1:1,000-1:5,000

Flow Cytometry (FCM): 1:2,000

Immunocytochemistry (IC): 1:100-1:1,000

---

### SUPPORT

SUPPORT@GENUINBIOTECH.COM  
TEL: +1-540-855-7041

### ORDERS

SALES@GENUINBIOTECH.COM  
FAX: +1-540-855-7041

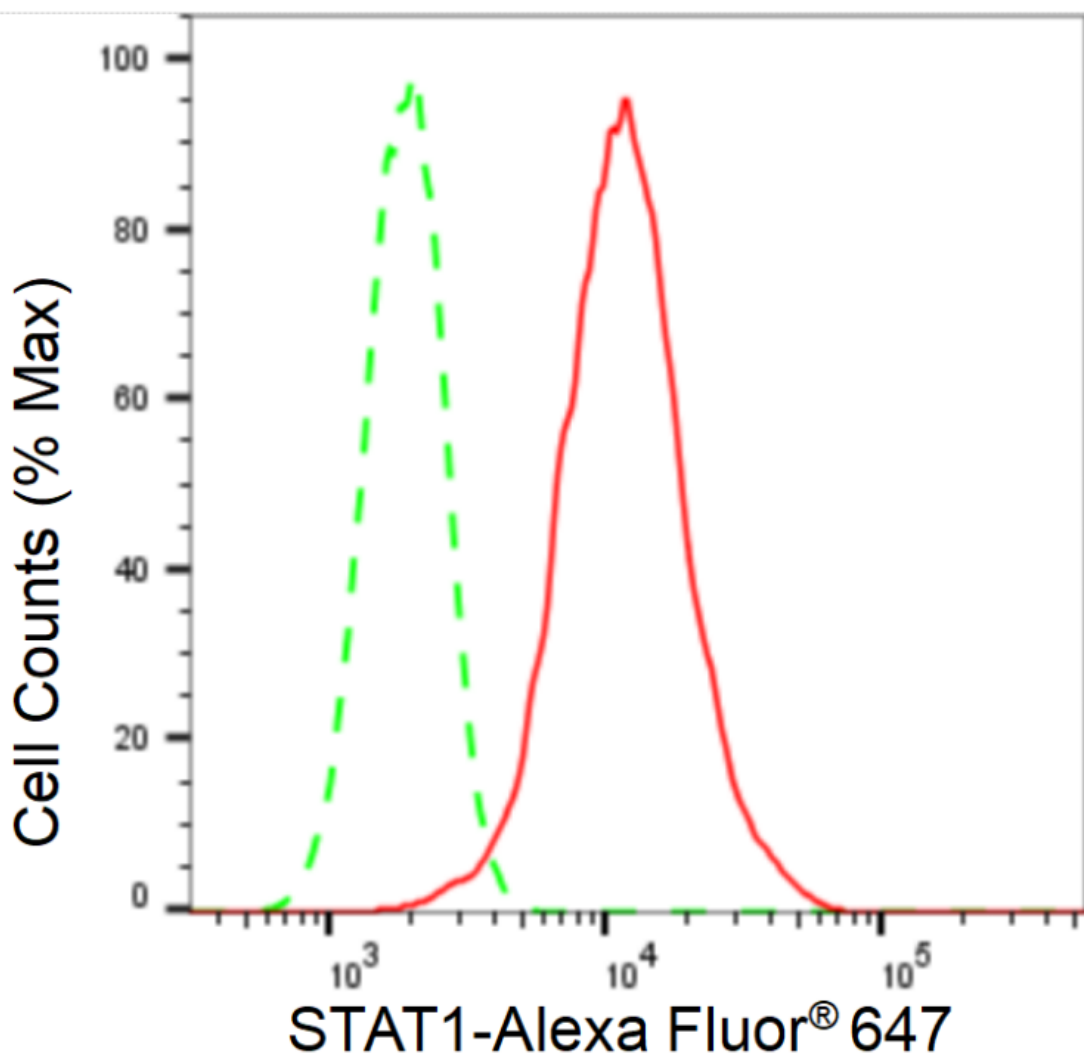
[WWW.GENUINBIOTECH.COM](http://WWW.GENUINBIOTECH.COM)

## KD-Validated Anti-STAT1 Recombinant Rabbit Monoclonal Antibody

PAGE 2

**Note:** This product is for research use only.

### Validation Data



Copyright ©2024 Genuin Biotechnologies LLC

Flow cytometric analysis of STAT1 expression in H9c2 cells using STAT1 antibody (Cat#61713, 1:2,000). Green, isotype control; red, STAT1.

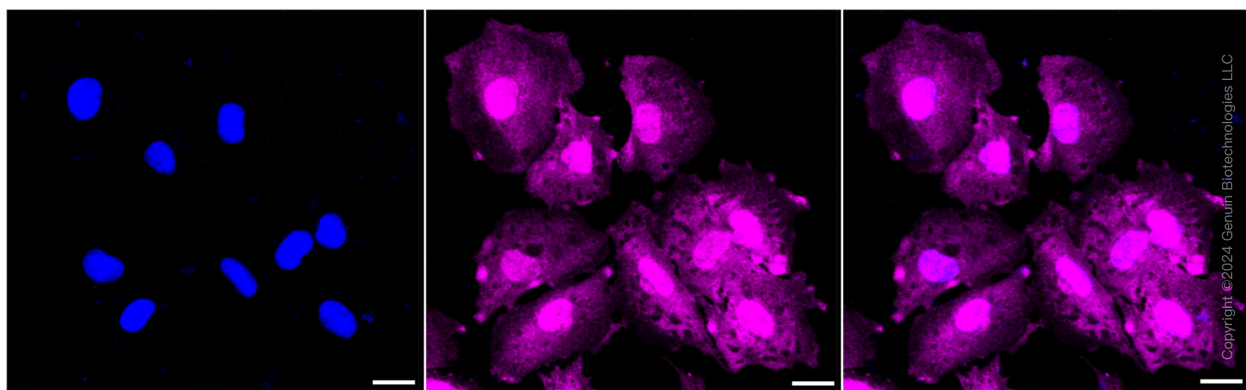
#### SUPPORT

SUPPORT@GENUINBIOTECH.COM  
TEL: +1-540-855-7041

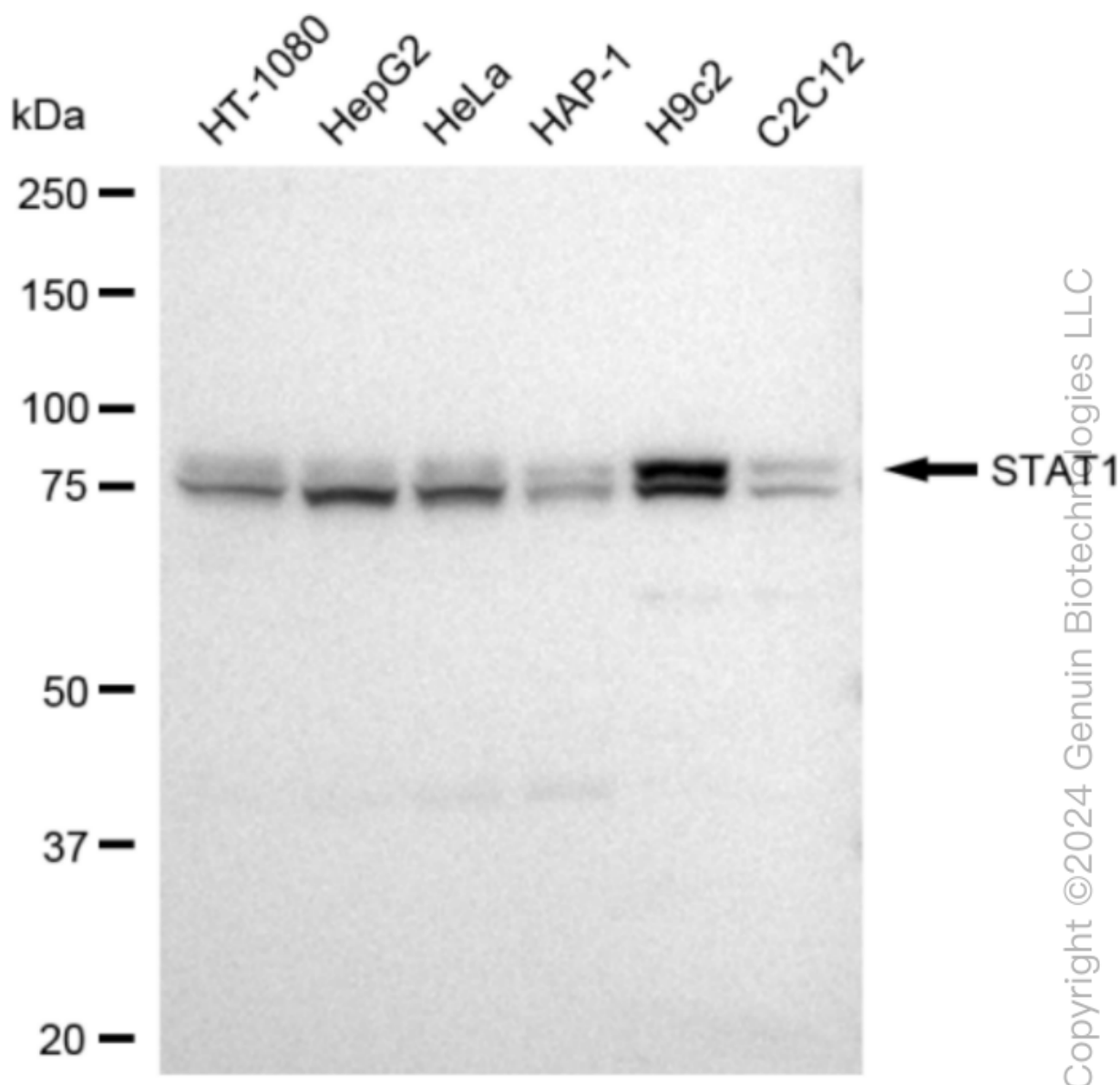
#### ORDERS

SALES@GENUINBIOTECH.COM  
FAX: +1-540-855-7041

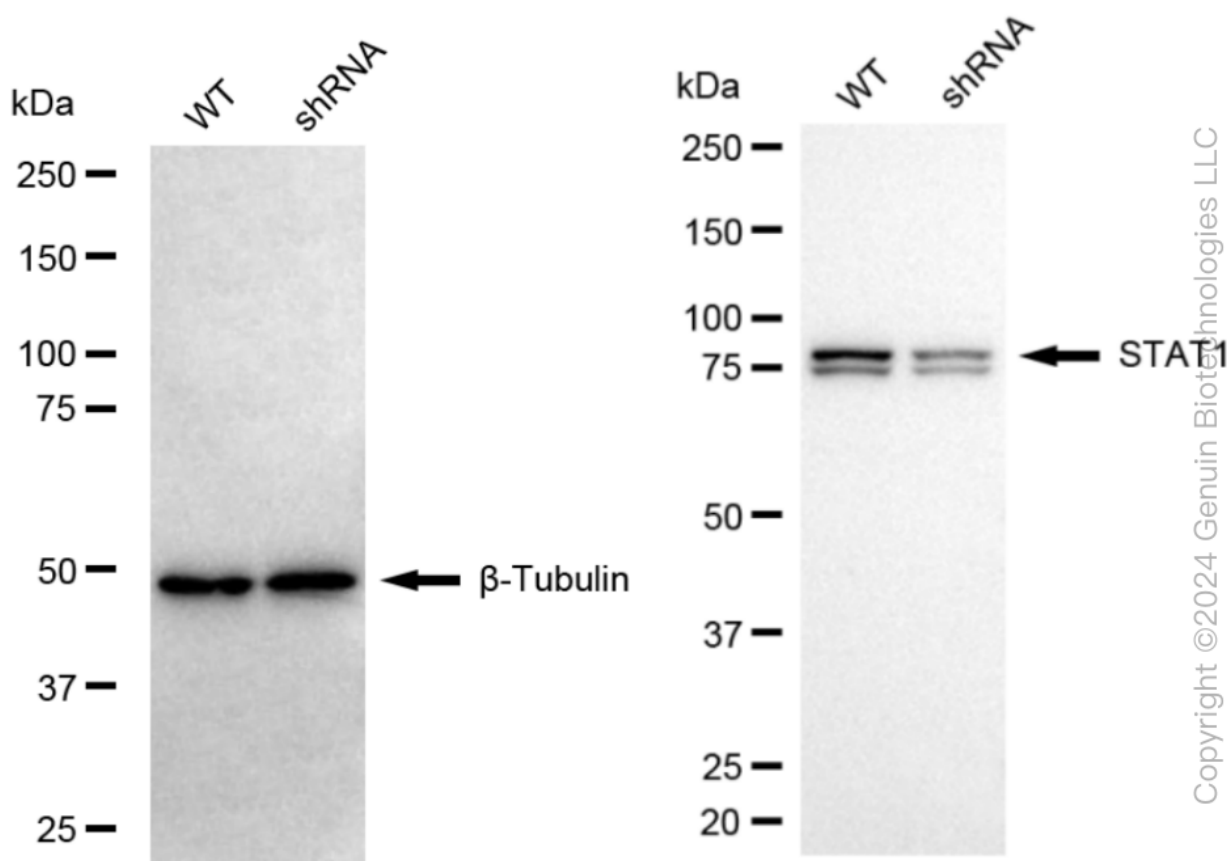
[WWW.GENUINBIOTECH.COM](http://WWW.GENUINBIOTECH.COM)



Immunocytochemical staining of H9C2 cells with STAT1 antibody (Cat#61713, 1:1,000). Nuclei were stained blue with DAPI; STAT1 was stained magenta with Alexa Fluor® 647. Images were taken using Leica stellaris 5. Protein abundance based on laser Intensity and smart gain: Medium. Scale bar: 20  $\mu$ m.



Western blotting analysis using anti-STAT1 antibody (Cat#61713). Total cell lysates (30 µg) from various cell lines were loaded and separated by SDS-PAGE. The blot was incubated with anti-STAT1 antibody (Cat#61713, 1:5,000) and HRP-conjugated goat anti-rabbit secondary antibody (Cat#201, 1:20,000) respectively. Image was developed using FeQ™ ECL Substrate Kit (Cat#226).



Western blotting analysis using anti-STAT1 antibody (Cat#61713). STAT1 expression in wild-type (WT) and STAT1 shRNA knockdown (KD) H9c2 cells with 20 µg of total cell lysates. β-Tubulin serves as a loading control. The blot was incubated with anti-STAT1 antibody (Cat#61713, 1:20,000) and HRP-conjugated goat anti-rabbit secondary antibody (Cat#201, 1:20,000) respectively. Image was developed using NaQ™ ECL Substrate Kit (Cat#716).