

# KD-Validated Anti-Phospho-STAT3 (Tyr705) Recombinant Rabbit Monoclonal Antibody



**Catalog #: 61715**

## Aliases

STAT3; Signal Transducer And Activator Of Transcription 3; APRF; Acute-Phase Response Factor; Signal Transducer And Activator Of Transcription 3 (Acute-Phase Response Factor); DNA-Binding Protein APRF; ADMIO1; ADMIO; HIES

## Background

Gene Name: STAT3

NCBI Gene Entry: [6774](#)

UniProt Entry: [P40763](#)

## Application Information

Molecular Weight: Predicted, 88 kDa, observed, 88 kDa

Clonality: Rabbit monoclonal antibody

Clone ID: 23GB4205

Species Reactivity: Human, mouse, rat

Applications Tested: Western blotting (WB), immunocytochemistry (IC)

## Immunogen

A synthesized peptide derived from human STAT3

## Isotype

Rabbit IgG

## Storage Buffer

Supplied in PBS (pH 7.4) containing 50% glycerol, and 0.02% sodium azide.

## Storage

Store at -20 °C for one year.

## Recommended Dilutions

Western Blotting (WB): 1:1,000-1:5,000

Immunocytochemistry (IC): 1:100-1:1,000

**Note:** This product is for research use only.

## Validation Data

---

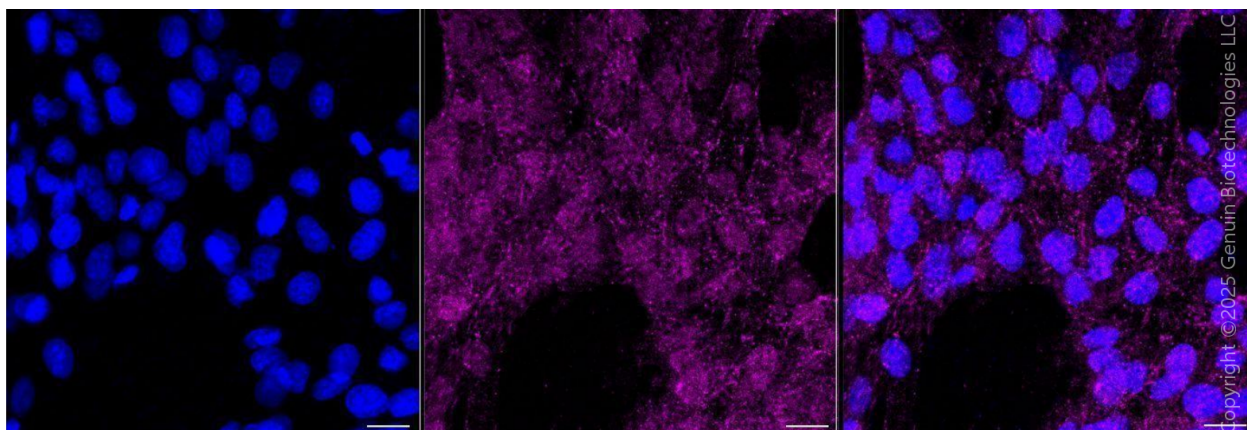
### SUPPORT

SUPPORT@GENUINBIOTECH.COM  
TEL: +1-540-855-7041

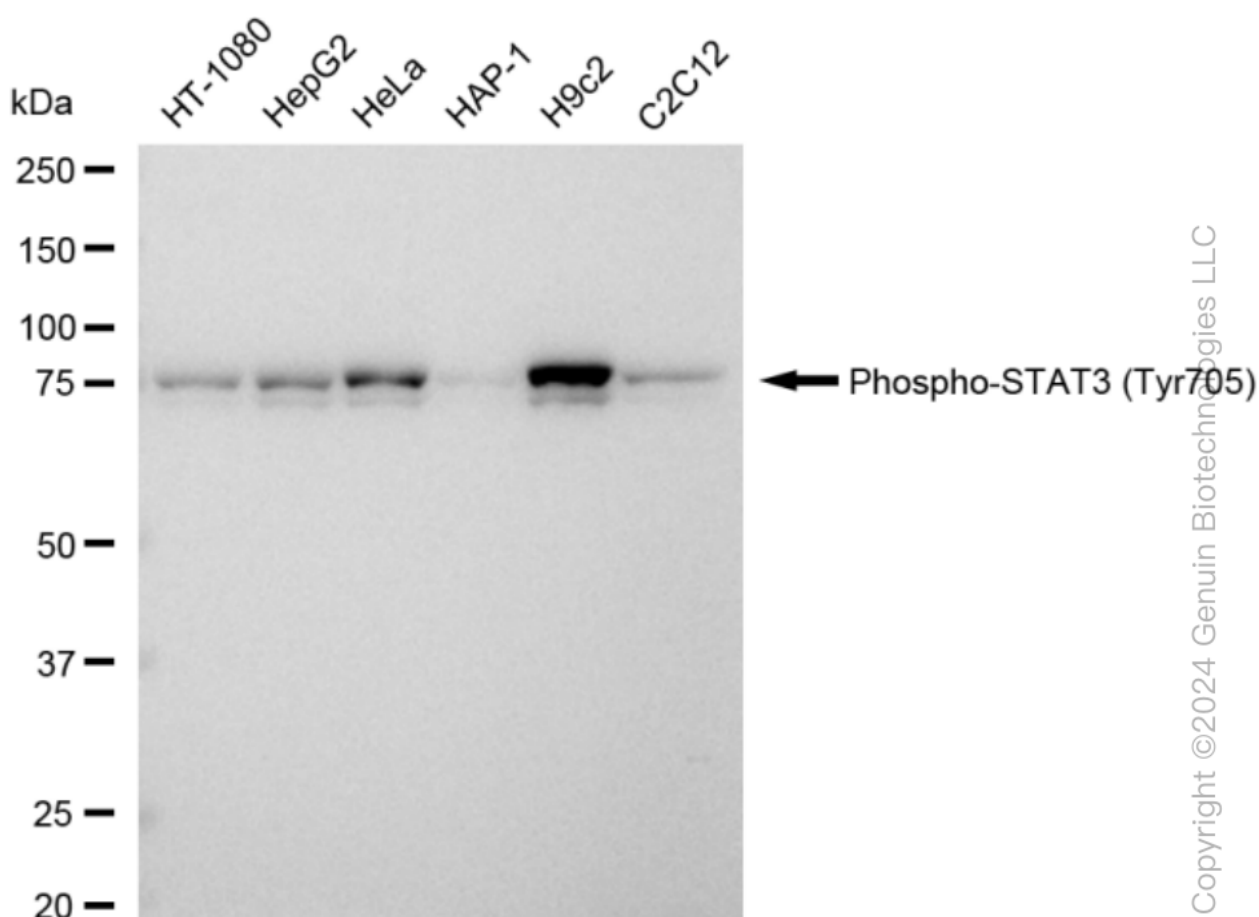
### ORDERS

SALES@GENUINBIOTECH.COM  
FAX: +1-540-855-7041

[WWW.GENUINBIOTECH.COM](http://WWW.GENUINBIOTECH.COM)



Immunocytochemical staining of HT-1080 cells with anti-Phospho-STAT3 (Tyr705) antibody (Cat#61715, 1:1,000) . Nuclei were stained blue with DAPI; Phospho-STAT3 (Tyr705) was stained magenta with Alexa Fluor® 647. Images were taken using Leica stellaris 5. Protein abundance based on laser Intensity and smart gain: Medium. Scale bar, 20  $\mu$ m.

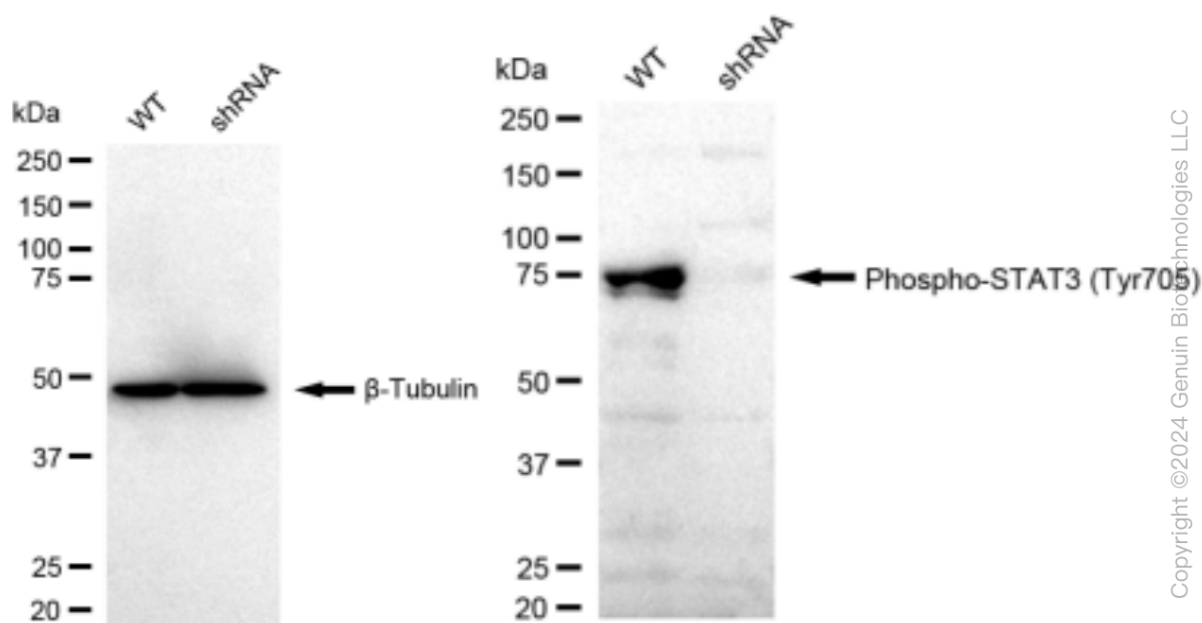


Western blotting analysis using anti-Phospho-STAT3 (Tyr705) antibody (Cat#61715). Total cell lysates (30  $\mu$ g) from various cell lines were loaded and separated by SDS-PAGE. The blot was incubated with anti-Phospho-STAT3 (Tyr705) antibody (Cat#61715, 1:5,000) and HRP-conjugated

## KD-Validated Anti-Phospho-STAT3 (Tyr705) Recombinant Rabbit Monoclonal Antibody

PAGE 3

goat anti-rabbit secondary antibody (Cat#201, 1:20,000) respectively. Image was developed using FeQ™ ECL Substrate Kit (Cat#226).



Western blotting analysis using anti-Phospho-STAT3 (Tyr705) antibody (Cat#61715). Phospho-STAT3 (Tyr705) expression in wild type (WT) and Phospho-STAT3 (Tyr705) shRNA knockdown (KD) HeLa cells with 30 µg of total cell lysates. β-Tubulin serves as a loading control. The blot was incubated with anti-Phospho-STAT3 (Tyr705) antibody (Cat#61715, 1:10,000) and HRP-conjugated goat anti-rabbit secondary antibody (Cat#201, 1:20,000) respectively. Image was developed using FeQ™ ECL Substrate Kit (Cat#226).

### SUPPORT

SUPPORT@GENUINBIOTECH.COM  
TEL: +1-540-855-7041

### ORDERS

SALES@GENUINBIOTECH.COM  
FAX: +1-540-855-7041

[WWW.GENUINBIOTECH.COM](http://WWW.GENUINBIOTECH.COM)