

# KD-Validated Anti-SUPT5H Recombinant Rabbit Monoclonal Antibody



**Catalog #: 61718**

## Aliases

SUPT5H; SPT5 Homolog, DSIF Elongation Factor Subunit; SPT5H; SPT5; DRB Sensitivity-Inducing Factor 160 KDa Subunit; DRB Sensitivity-Inducing Factor Large Subunit; Transcription Elongation Factor SPT5; Tat-Cotransactivator 1 Protein; DSIF Large Subunit; DSIF P160; FLJ34157; HSPT5; Suppressor Of Ty 5 Homolog (S. Cerevisiae); Suppressor Of Ty (S.Cerevisiae) 5 Homolog; Suppressor Of Ty 5 Homolog; Tat-CT1 Protein; Tat-CT1

## Background

Gene Name: SUPT5H

NCBI Gene Entry: [6829](#)

UniProt Entry: [O00267](#)

## Application Information

Molecular Weight: Predicted, 121 kDa, observed, 155 kDa

Clonality: Rabbit monoclonal antibody

Clone ID: 23GB4220

Species Reactivity: Human, mouse, rat

Applications Tested: Western blotting (WB), flow cytometry (FCM), immunocytochemistry (IC)

## Immunogen

A synthesized peptide derived from human SUPT5H

## Isotype

Rabbit IgG

## Storage Buffer

Supplied in PBS (pH 7.4) containing 50% glycerol, and 0.02% sodium azide.

## Storage

Store at -20 °C for one year.

## Recommended Dilutions

Western Blotting (WB): 1:1,000-1:5,000

Flow Cytometry (FCM): 1:2,000

Immunocytochemistry (IC): 1:100-1:1,000

---

### SUPPORT

SUPPORT@GENUINBIOTECH.COM  
TEL: +1-540-855-7041

### ORDERS

SALES@GENUINBIOTECH.COM  
FAX: +1-540-855-7041

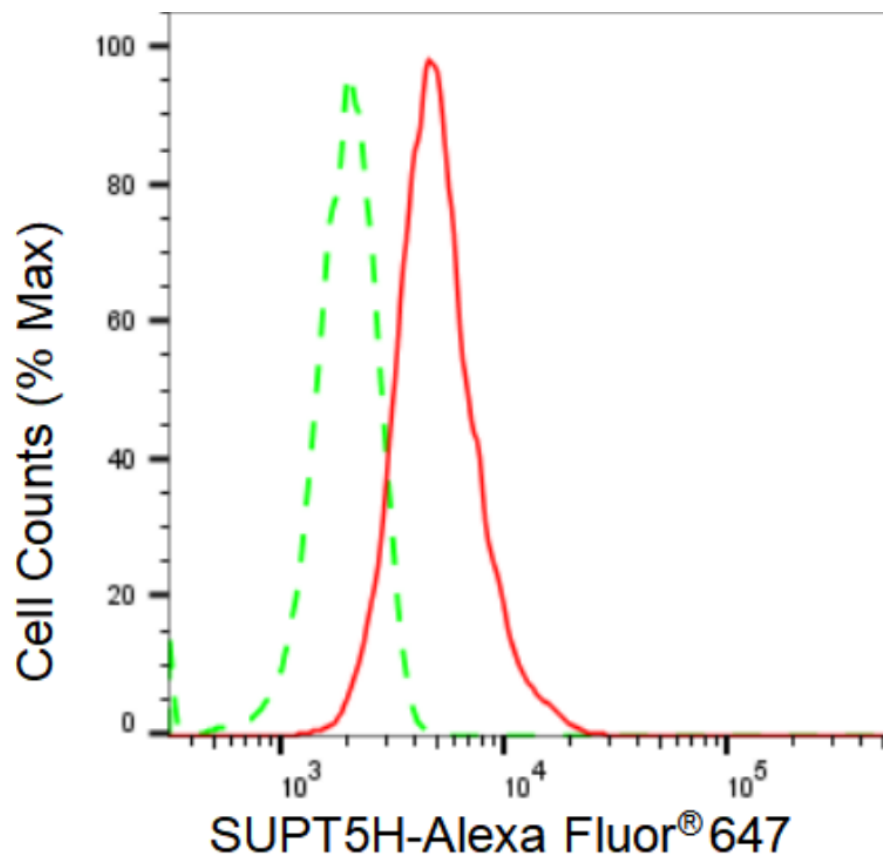
[WWW.GENUINBIOTECH.COM](http://WWW.GENUINBIOTECH.COM)

# KD-Validated Anti-SUPT5H Recombinant Rabbit Monoclonal Antibody

PAGE 2

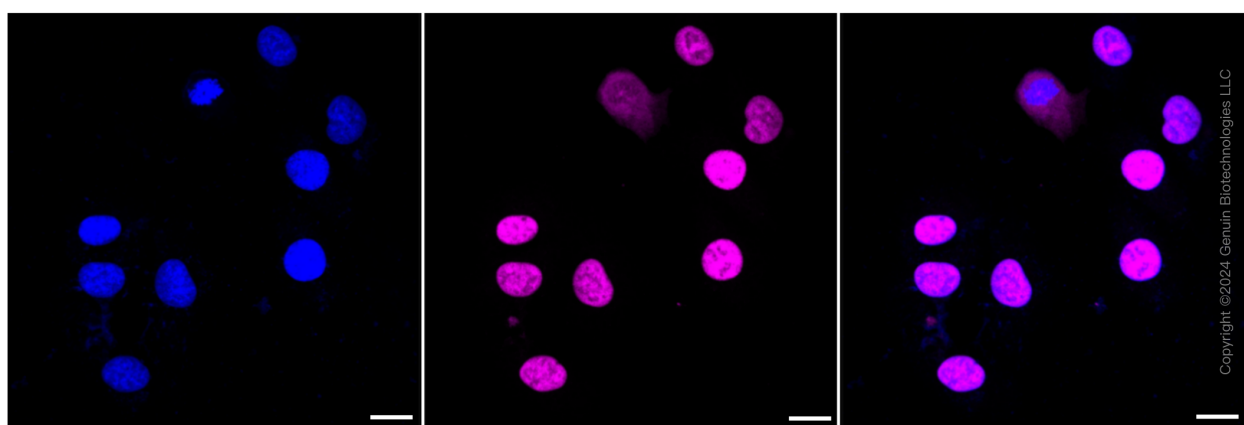
**Note:** This product is for research use only.

## Validation Data



Copyright ©2024 Genuin Biotechnologies LLC

Flow cytometric analysis of SUPT5H expression in HT-1080 cells using SUPT5H antibody (Cat#61718, 1:2,000). Green, isotype control; red, SUPT5H.



Copyright ©2024 Genuin Biotechnologies LLC

### SUPPORT

SUPPORT@GENUINBIOTECH.COM  
TEL: +1-540-855-7041

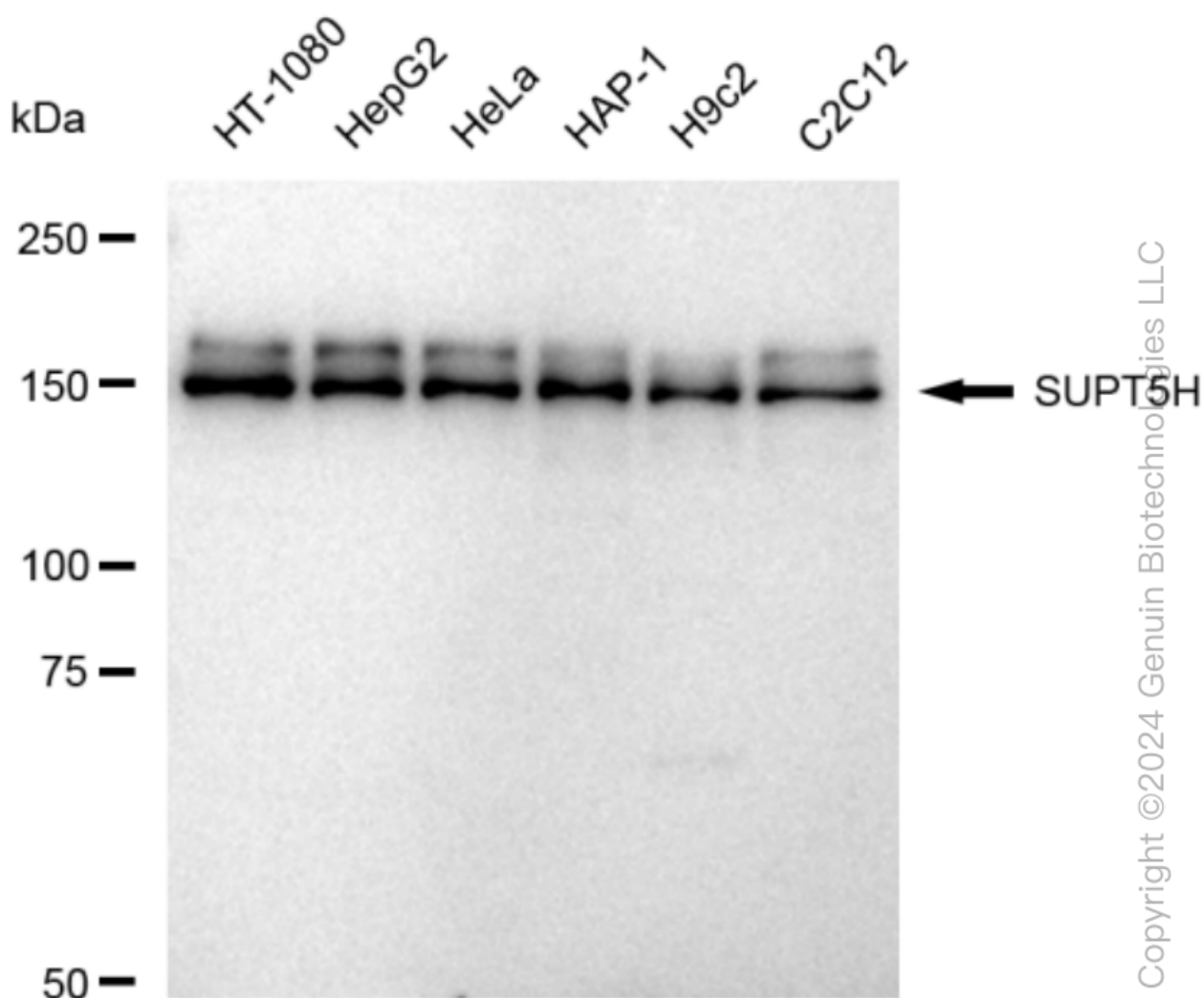
### ORDERS

SALES@GENUINBIOTECH.COM  
FAX: +1-540-855-7041

[WWW.GENUINBIOTECH.COM](http://WWW.GENUINBIOTECH.COM)

## KD-Validated Anti-SUPT5H Recombinant Rabbit Monoclonal Antibody

PAGE 3



Western blotting analysis using anti-SUPT5H antibody (Cat#61718). Total cell lysates (30 µg) from various cell lines were loaded and separated by SDS-PAGE. The blot was incubated with anti-SUPT5H antibody (Cat#61718, 1:5,000) and HRP-conjugated goat anti-rabbit secondary antibody (Cat#201, 1:20,000) respectively. Image was developed using FeQ™ ECL Substrate Kit (Cat#226).

### SUPPORT

SUPPORT@GENUINBIOTECH.COM  
TEL: +1-540-855-7041

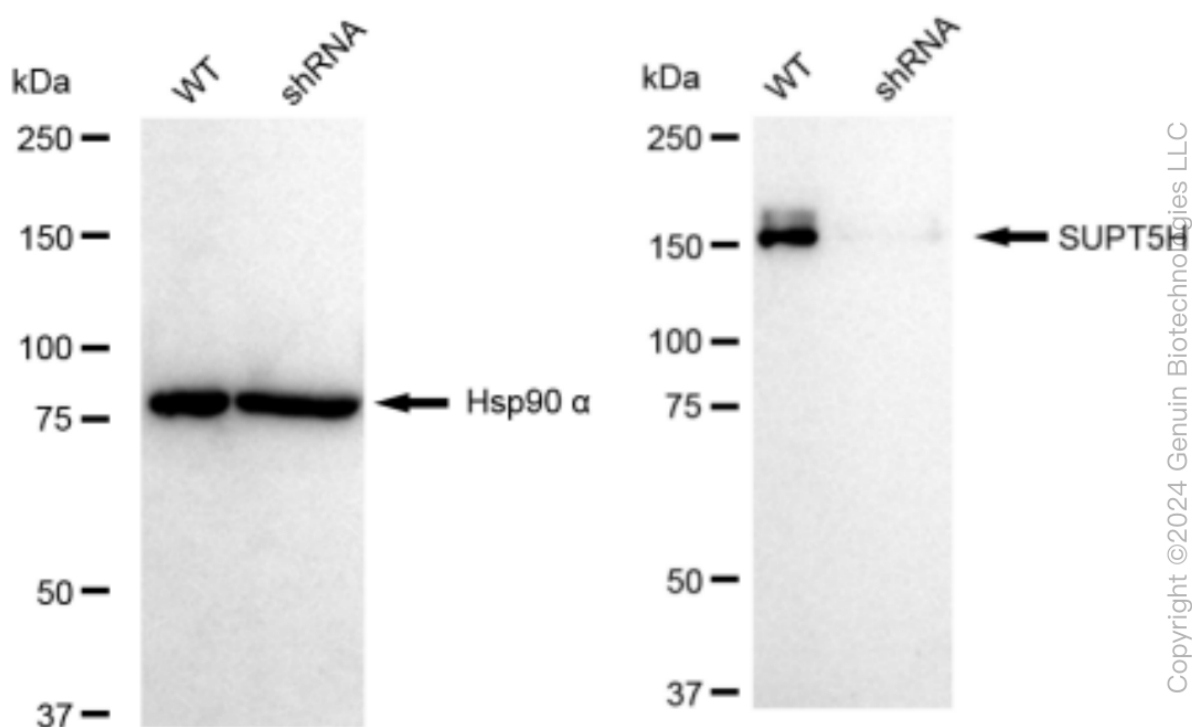
### ORDERS

SALES@GENUINBIOTECH.COM  
FAX: +1-540-855-7041

[WWW.GENUINBIOTECH.COM](http://WWW.GENUINBIOTECH.COM)

## KD-Validated Anti-SUPT5H Recombinant Rabbit Monoclonal Antibody

PAGE 4



Western blotting analysis using anti-SUPT5H antibody (Cat#61718). SUPT5H expression in wild type (WT) and SUPT5H shRNA knockdown (KD) HeLa cells with 30 µg of total cell lysates. Hsp90 α serves as a loading control. The blot was incubated with anti-SUPT5H antibody (Cat#61718, 1:5,000) and HRP-conjugated goat anti-rabbit secondary antibody (Cat#201, 1:20,000) respectively. Image was developed using FeQ™ ECL Substrate Kit (Cat#226).

### SUPPORT

SUPPORT@GENUINBIOTECH.COM  
TEL: +1-540-855-7041

### ORDERS

SALES@GENUINBIOTECH.COM  
FAX: +1-540-855-7041

[WWW.GENUINBIOTECH.COM](http://WWW.GENUINBIOTECH.COM)