

# KD-Validated Anti-Phospho-EGFR (Tyr1068) Rabbit Monoclonal Antibody



**Catalog #: 61720**

## Aliases

EGFR; Epidermal Growth Factor Receptor; ERBB1; ERBB; Receptor Tyrosine-Protein Kinase ErbB-1; Erb-B2 Receptor Tyrosine Kinase 1; Proto-Oncogene C-ErbB-1; EC 2.7.10.1; HER1; Epidermal Growth Factor Receptor (Avian Erythroblastic Leukemia Viral (V-Erb-B) Oncogene Homolog); Erythroblastic Leukemia Viral (V-Erb-B) Oncogene Homolog (Avian); Avian Erythroblastic Leukemia Viral (V-Erb-B) Oncogene Homolog; Epidermal Growth Factor Receptor Tyrosine Kinase Domain; Cell Proliferation-Inducing Protein 61; Cell Growth Inhibiting Protein 40; EGFR VIII; EC 2.7.10; NISBD2; PIG61; MENA

## Background

Gene Name: EGFR

NCBI Gene Entry: [1956](#)

UniProt Entry: [P00533](#)

## Application Information

Molecular Weight: Predicted, 134 kDa, observed, 175 kDa

Clonality: Rabbit monoclonal antibody

Clone ID: 25GB3430

Species Reactivity: Human

Applications Tested: Western blotting (WB), flow cytometry (FCM)

## Immunogen

A synthesized peptide derived from human Phospho-EGFR (Tyr1068)

## Isotype

Rabbit IgG

## Storage Buffer

Supplied in PBS (pH 7.4) containing 50% glycerol, and 0.02% sodium azide.

## Storage

Store at -20 °C for one year.

## Recommended Dilutions

Western blotting (WB): 1:1,000-1:5,000

Flow Cytometry (FCM): 1:2,000

---

### SUPPORT

SUPPORT@GENUINBIOTECH.COM  
TEL: +1-540-855-7041

### ORDERS

SALES@GENUINBIOTECH.COM  
FAX: +1-540-855-7041

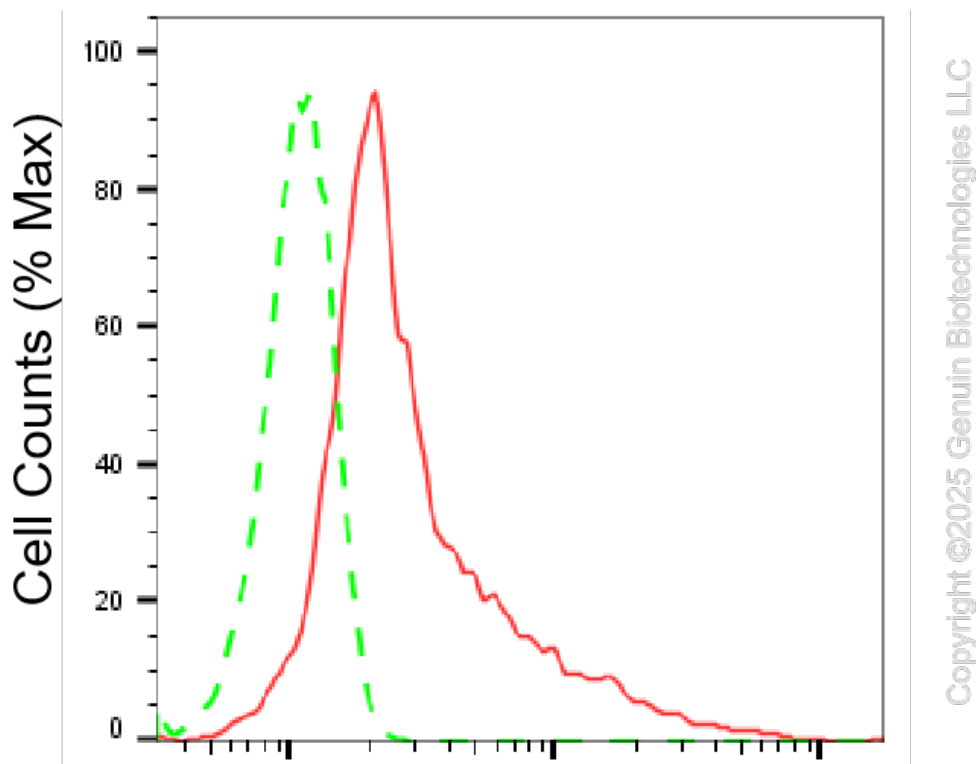
[WWW.GENUINBIOTECH.COM](http://WWW.GENUINBIOTECH.COM)

## KD-Validated Anti-Phospho-EGFR (Tyr1068) Rabbit Monoclonal Antibody

PAGE 2

**Note:** This product is for research use only.

### Validation Data



### Phospho-EGFR (Tyr1068)-Alexa Fluor® 647

Flow cytometric analysis of Phospho-EGFR (Tyr1068) expression in HepG2 cells using anti-Phospho-EGFR (Tyr1068) antibody (Cat#61720, 1:2,000). Green, isotype control; red, Phospho-EGFR (Tyr1068).

#### SUPPORT

SUPPORT@GENUINBIOTECH.COM  
TEL: +1-540-855-7041

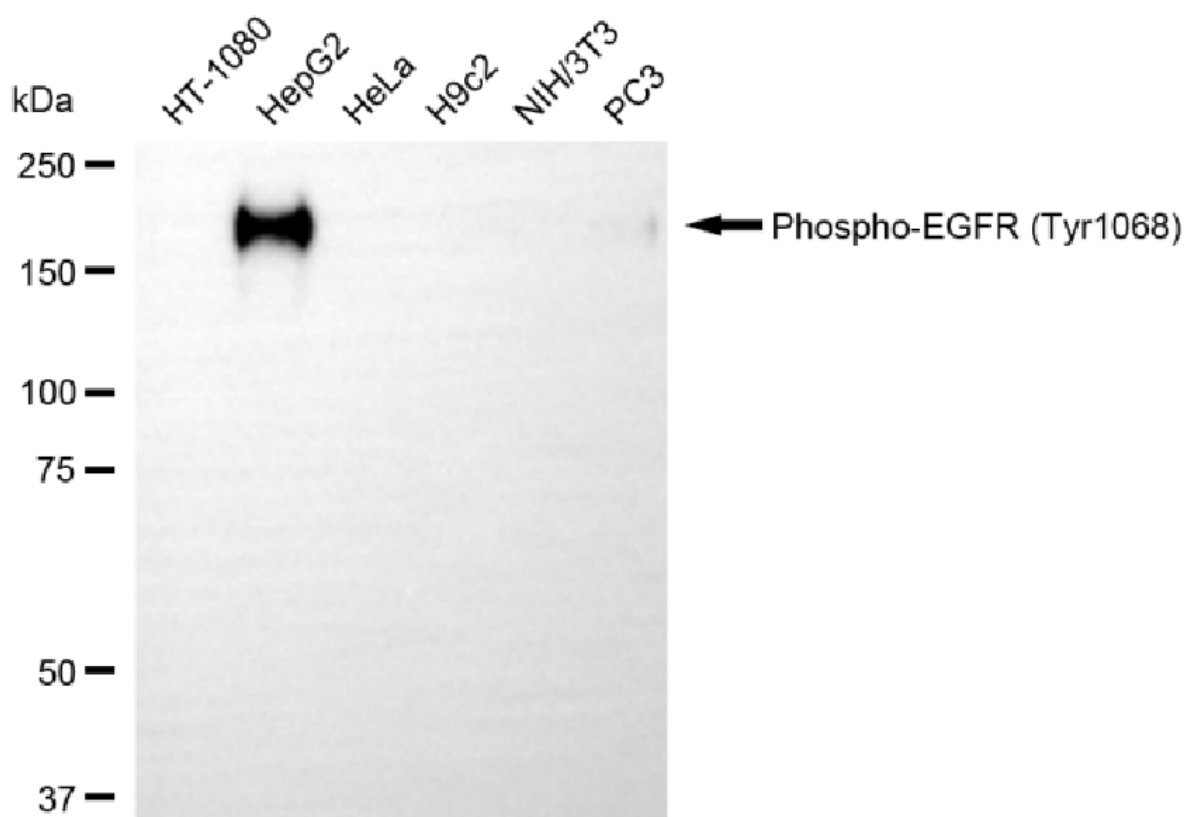
#### ORDERS

SALES@GENUINBIOTECH.COM  
FAX: +1-540-855-7041

[WWW.GENUINBIOTECH.COM](http://WWW.GENUINBIOTECH.COM)

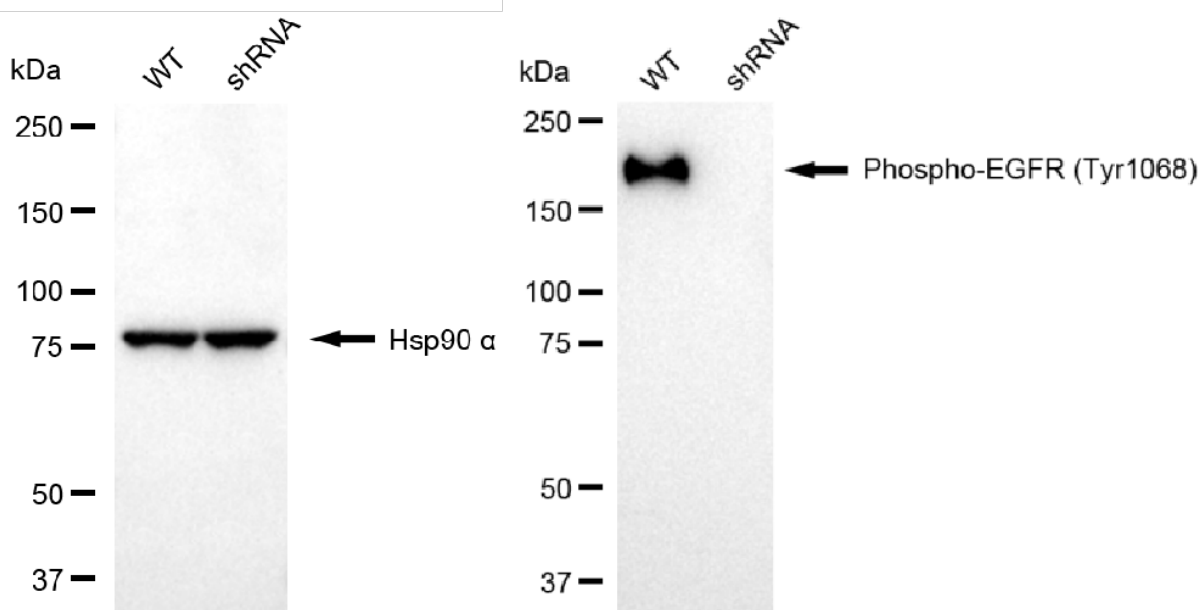
## KD-Validated Anti-Phospho-EGFR (Tyr1068) Rabbit Monoclonal Antibody

PAGE 3



Copyright ©2025 Genuin Biotechnologies LLC

Western blotting analysis using anti-phospho-EGFR (Tyr1068) antibody (Cat#61720). Total cell lysates (30  $\mu$ g) from various cell lines were loaded and separated by SDS-PAGE. The blot was incubated with anti-phospho-EGFR (Tyr1068) antibody (Cat#61720, 1:5,000) and HRP-conjugated goat anti-rabbit secondary antibody (Cat#201, 1:20,000) respectively. Image was developed using NaQ™ ECL Substrate Kit (Cat#716).



Copyright ©2025 Genuin Biotechnologies LLC

### SUPPORT

SUPPORT@GENUINBIOTECH.COM  
TEL: +1-540-855-7041

### ORDERS

SALES@GENUINBIOTECH.COM  
FAX: +1-540-855-7041

WWW.GENUINBIOTECH.COM

## **KD-Validated Anti-Phospho-EGFR (Tyr1068) Rabbit Monoclonal Antibody**

PAGE 4

Western blotting analysis using anti-phospho-EGFR (Tyr1068) antibody (Cat#61720). Phospho-EGFR (Tyr1068) expression in wild-type (WT) and EGFR shRNA knockdown (KD) HepG2 cells with 20 µg of total cell lysates. Hsp90  $\alpha$  serves as a loading control. The blot was incubated with anti-phospho-EGFR (Tyr1068) antibody (Cat#61720, 1:5,000) and HRP-conjugated goat anti-rabbit secondary antibody (Cat#201, 1:20,000) respectively. Image was developed using NaQ™ ECL Substrate Kit (Cat#716).

---

### **SUPPORT**

SUPPORT@GENUINBIOTECH.COM  
TEL: +1-540-855-7041

### **ORDERS**

SALES@GENUINBIOTECH.COM  
FAX: +1-540-855-7041

**WWW.GENUINBIOTECH.COM**