

# KD-Validated Anti-Tripartite motif containing 24 Recombinant Rabbit Monoclonal Antibody



**Catalog #: 61722**

## Aliases

TRIM24; Tripartite Motif Containing 24; RNF82; TIF1A; HTIF1; TIF1; RING-Type E3 Ubiquitin Transferase TIF1-Alpha; Transcription Intermediary Factor 1-Alpha; Transcriptional Intermediary Factor 1; E3 Ubiquitin-Protein Ligase TRIM24; RING Finger Protein 82; TIF1-Alpha; Tripartite Motif-Containing Protein 24; Tripartite Motif-Containing 24; EC 2.3.2.27; TIF1ALPHA; EC 6.3.2; Tif1a; PTC6; TF1A

## Background

Gene Name: TRIM24

NCBI Gene Entry: [8805](#)

UniProt Entry: [O15164](#)

## Application Information

Molecular Weight: Predicted, 117 kDa, observed, 130 kDa

Clonality: Rabbit monoclonal antibody

Clone ID: 23GB4235

Species Reactivity: Human

Applications Tested: Western blotting (WB), flow cytometry (FCM), immunocytochemistry (IC)

## Immunogen

A synthesized peptide derived from human TRIM24

## Isotype

Rabbit IgG

## Storage Buffer

Supplied in PBS (pH 7.4) containing 50% glycerol, and 0.02% sodium azide.

## Storage

Store at -20 °C for one year.

## Recommended Dilutions

Western Blotting (WB): 1:1,000-1:5,000

Flow Cytometry (FCM): 1:2,000

Immunocytochemistry (IC): 1:100-1:1,000

---

### SUPPORT

SUPPORT@GENUINBIOTECH.COM  
TEL: +1-540-855-7041

### ORDERS

SALES@GENUINBIOTECH.COM  
FAX: +1-540-855-7041

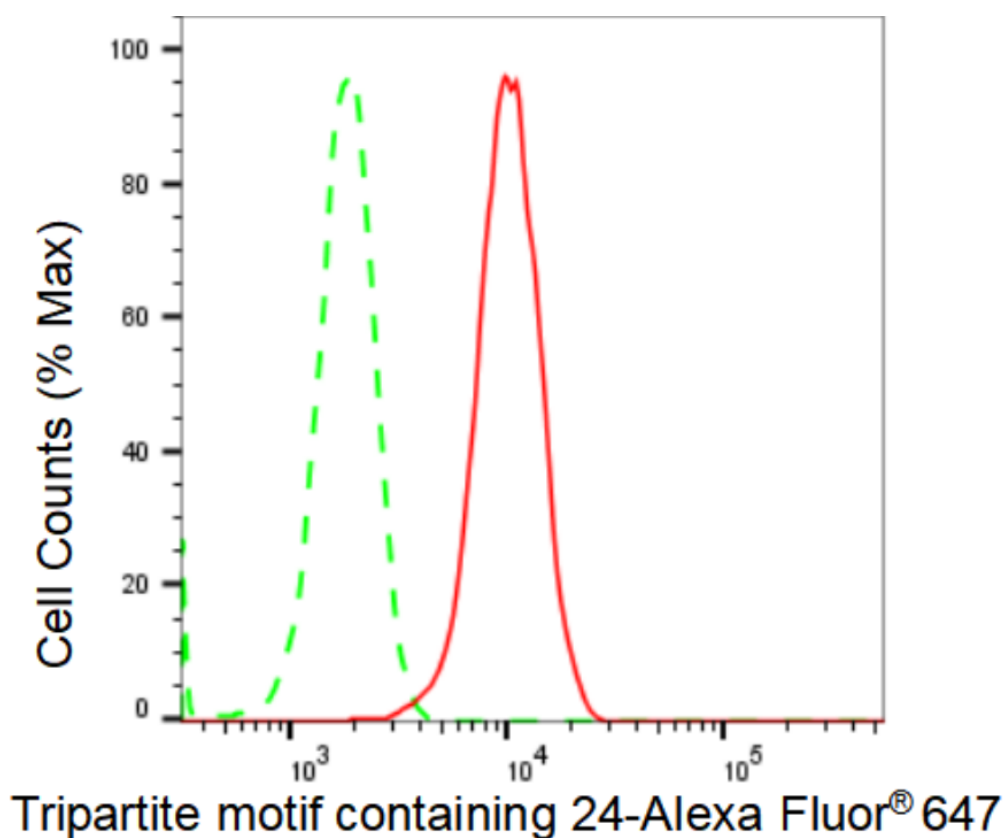
[WWW.GENUINBIOTECH.COM](http://WWW.GENUINBIOTECH.COM)

# KD-Validated Anti-Tripartite motif containing 24 Recombinant Rabbit Monoclonal Antibody

PAGE 2

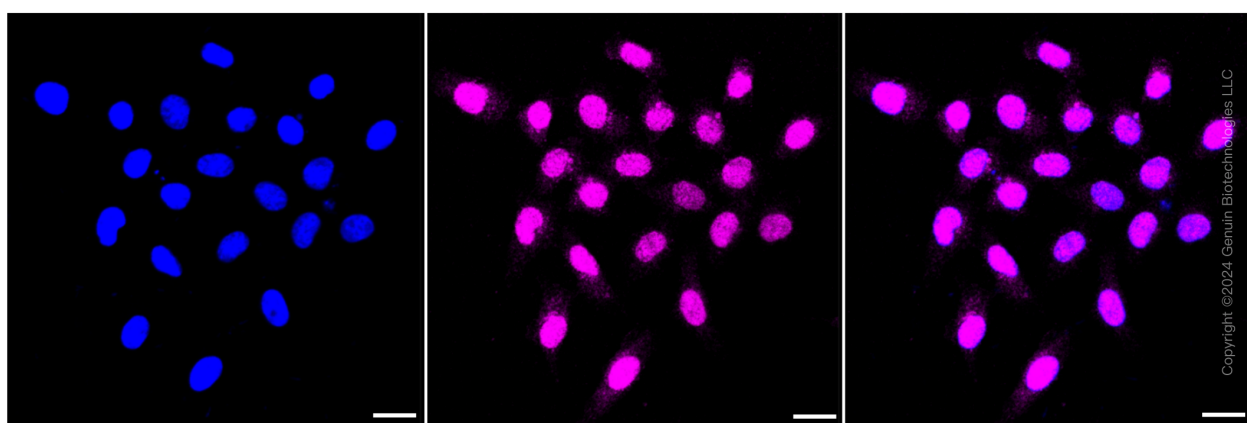
**Note:** This product is for research use only.

## Validation Data



Copyright ©2024 Genuin Biotechnologies LLC

Flow cytometric analysis of Tripartite motif containing 24 expression in HepG2 cells using Tripartite motif containing 24 antibody (Cat#61722, 1:2,000). Green, isotype control; red, Tripartite motif containing 24.



Immunocytochemical staining of HepG2 cells with Tripartite motif containing 24 antibody (Cat#61722, 1:1,000). Nuclei were stained blue with DAPI; Tripartite motif containing 24 was stained magenta with Alexa Fluor® 647. Images were taken using Leica stellaris 5. Protein

### SUPPORT

SUPPORT@GENUINBIOTECH.COM  
TEL: +1-540-855-7041

### ORDERS

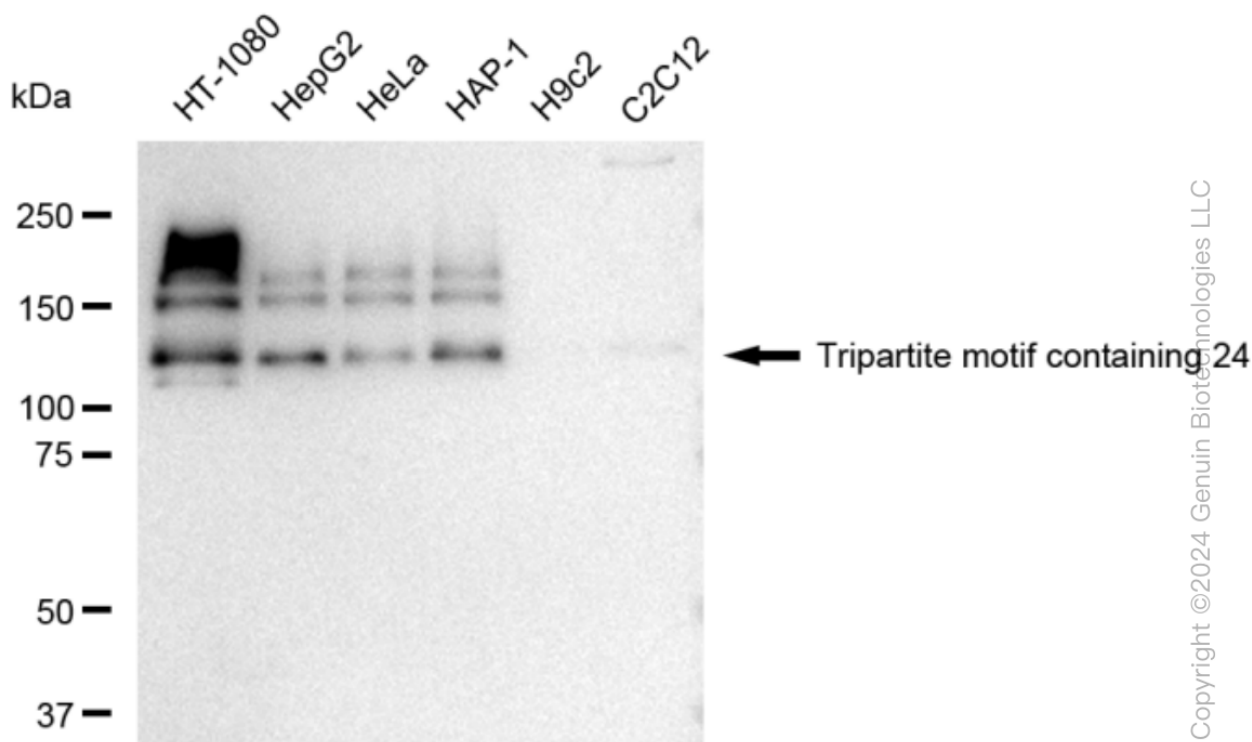
SALES@GENUINBIOTECH.COM  
FAX: +1-540-855-7041

WWW.GENUINBIOTECH.COM

## KD-Validated Anti-Tripartite motif containing 24 Recombinant Rabbit Monoclonal Antibody

PAGE 3

abundance based on laser Intensity and smart gain: Medium. Scale bar: 20  $\mu$ m.



Western blotting analysis using anti-Tripartite motif containing 24 antibody (Cat#61722). Total cell lysates (30  $\mu$ g) from various cell lines were loaded and separated by SDS-PAGE. The blot was incubated with anti-Tripartite motif containing 24 antibody (Cat#61722, 1:5,000) and HRP-conjugated goat anti-rabbit secondary antibody (Cat#201, 1:20,000) respectively. Image was developed using FeQ™ ECL Substrate Kit (Cat#226).

### SUPPORT

SUPPORT@GENUINBIOTECH.COM  
TEL: +1-540-855-7041

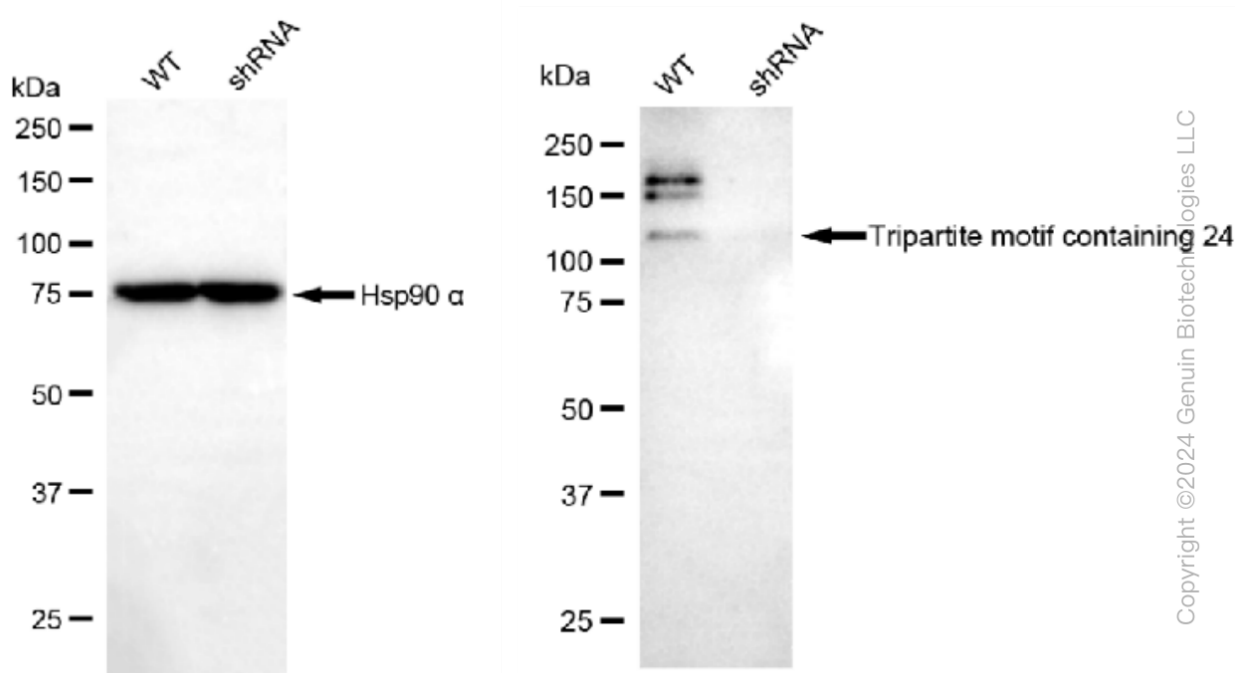
### ORDERS

SALES@GENUINBIOTECH.COM  
FAX: +1-540-855-7041

WWW.GENUINBIOTECH.COM

## KD-Validated Anti-Tripartite motif containing 24 Recombinant Rabbit Monoclonal Antibody

PAGE 4



Western blotting analysis using anti-Tripartite motif containing 24 antibody (Cat#61722). Tripartite motif containing 24 expression in wild type (WT) and Tripartite motif containing 24 shRNA knockdown (KD) HeLa cells with 30 µg of total cell lysates. β-Tubulin serves as a loading control. The blot was incubated with anti-Tripartite motif containing 24 antibody (Cat#61722, 1:5,000) and HRP-conjugated goat anti-rabbit secondary antibody (Cat#201, 1:20,000) respectively. Image was developed using FeQ™ ECL Substrate Kit (Cat#226).

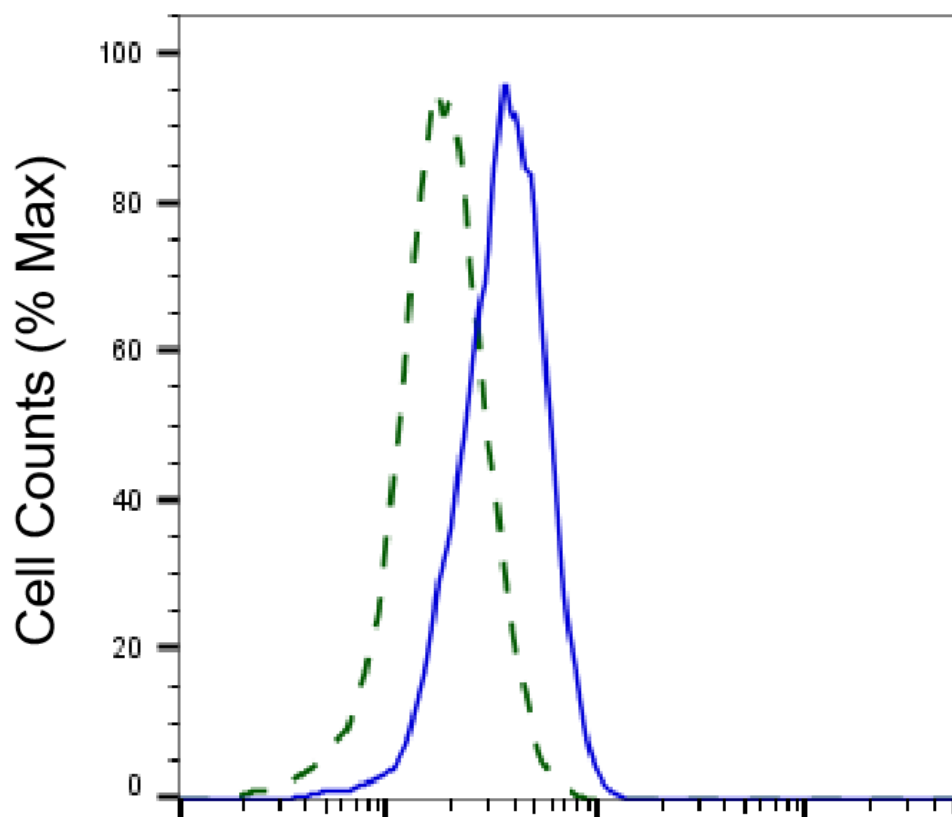
### SUPPORT

SUPPORT@GENUINBIOTECH.COM  
TEL: +1-540-855-7041

### ORDERS

SALES@GENUINBIOTECH.COM  
FAX: +1-540-855-7041

[WWW.GENUINBIOTECH.COM](http://WWW.GENUINBIOTECH.COM)



Copyright ©2025 Genuin Biotechnologies LLC

## Tripartite motif containing 24-Alexa Fluor® 647

Validation of Tripartite motif containing 24 knockdown using flow cytometry. Wild-type(WT, Blue) and knockdown(KD, Green) HeLa cells were stained with anti-Tripartite motif containing 24 antibody (Cat#61722, 1:2,000) and analyzed using BD flow cytometer.