

KD-Validated Anti-Ubiquitin specific peptidase 13 Recombinant Rabbit Monoclonal Antibody



Catalog #: 61725

Aliases

USP13; Ubiquitin Specific Peptidase 13; Ubiquitin Specific Protease 13 (Isopeptidase T-3); Ubiquitin-Specific-Processing Protease 13; Ubiquitin Carboxyl-Terminal Hydrolase 13; Deubiquitinating Enzyme 13; Ubiquitin Thioesterase 13; Isopeptidase T-3; IsoT-3; ISOT-3; ISOT3; Ubiquitin Specific Peptidase 13 (Isopeptidase T-3); Ubiquitin Thiolesterase 13; EC 3.4.19.12; EC 3.1.2.15

Background

Gene Name: USP13

NCBI Gene Entry: [8975](#)

UniProt Entry: [Q92995](#)

Application Information

Molecular Weight: Predicted, 97 kDa, observed, 97 kDa

Clonality: Rabbit monoclonal antibody

Clone ID: 23GB4250

Species Reactivity: Human, rat

Applications Tested: Western blotting (WB), flow cytometry (FCM), immunocytochemistry (IC)

Immunogen

A synthesized peptide derived from human USP13

Isotype

Rabbit IgG

Storage Buffer

Supplied in PBS (pH 7.4) containing 50% glycerol, and 0.02% sodium azide.

Storage

Store at -20 °C for one year.

Recommended Dilutions

Western Blotting (WB): 1:1,000-1:5,000

Flow Cytometry (FCM): 1:2,000

Immunocytochemistry (IC): 1:100-1:1,000

SUPPORT

SUPPORT@GENUINBIOTECH.COM
TEL: +1-540-855-7041

ORDERS

SALES@GENUINBIOTECH.COM
FAX: +1-540-855-7041

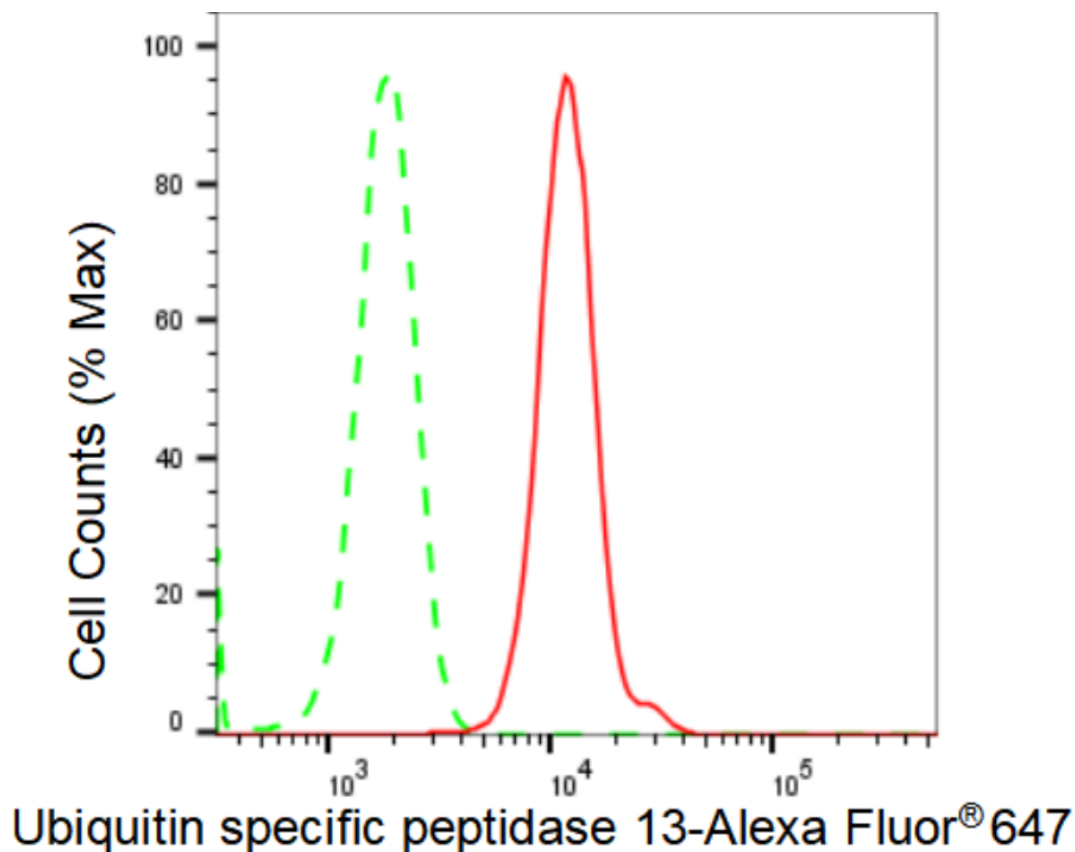
WWW.GENUINBIOTECH.COM

KD-Validated Anti-Ubiquitin specific peptidase 13 Recombinant Rabbit Monoclonal Antibody

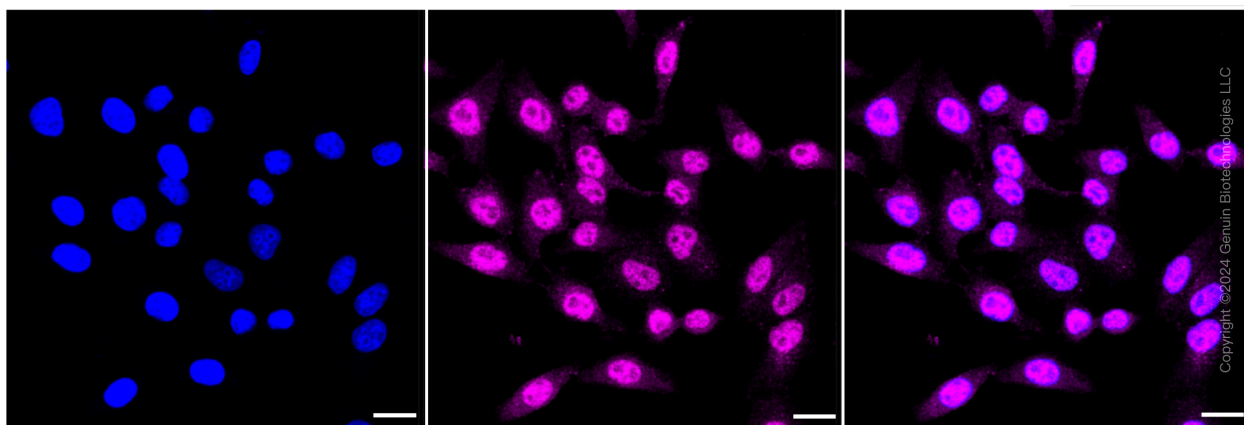
PAGE 2

Note: This product is for research use only.

Validation Data



Flow cytometric analysis of Ubiquitin specific peptidase 13 expression in HepG2 cells using Ubiquitin specific peptidase 13 antibody (Cat#61725, 1:2,000). Green, isotype control; red, Ubiquitin specific peptidase 13.



Immunocytochemical staining of HepG2 cells with Ubiquitin specific peptidase 13 antibody (Cat#61725, 1:1,000). Nuclei were stained blue with DAPI; Ubiquitin specific peptidase 13 was stained magenta with Alexa Fluor® 647. Images were taken using Leica stellaris 5. Protein

SUPPORT

SUPPORT@GENUINBIOTECH.COM
TEL: +1-540-855-7041

ORDERS

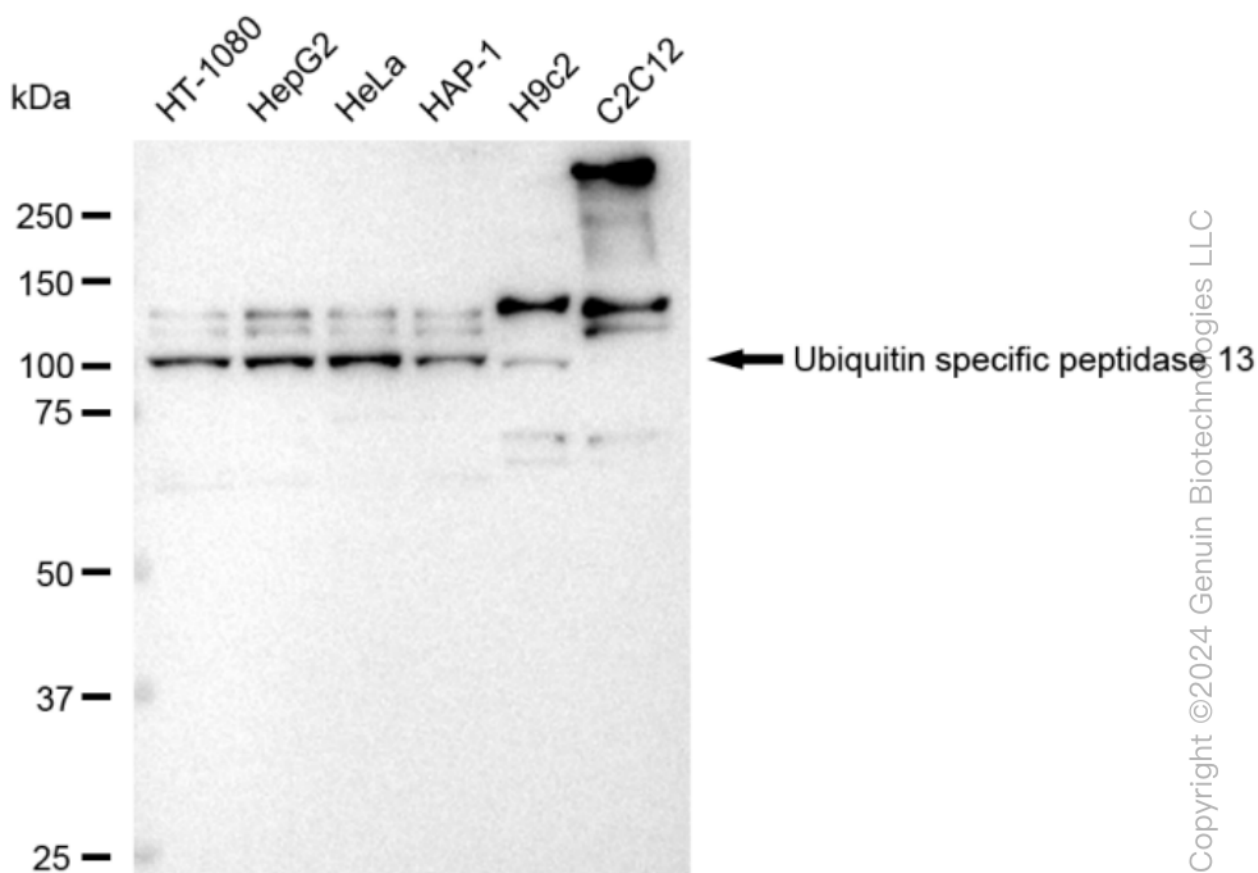
SALES@GENUINBIOTECH.COM
FAX: +1-540-855-7041

WWW.GENUINBIOTECH.COM

KD-Validated Anti-Ubiquitin specific peptidase 13 Recombinant Rabbit Monoclonal Antibody

PAGE 3

abundance based on laser Intensity and smart gain: Medium. Scale bar: 20 μ m.



Western blotting analysis using anti-Ubiquitin specific peptidase 13 antibody (Cat#61725). Total cell lysates (30 μ g) from various cell lines were loaded and separated by SDS-PAGE. The blot was incubated with anti-Ubiquitin specific peptidase 13 antibody (Cat#61725, 1:5,000) and HRP-conjugated goat anti-rabbit secondary antibody (Cat#201, 1:20,000) respectively. Image was developed using FeQ™ ECL Substrate Kit (Cat#226).

SUPPORT

SUPPORT@GENUINBIOTECH.COM
TEL: +1-540-855-7041

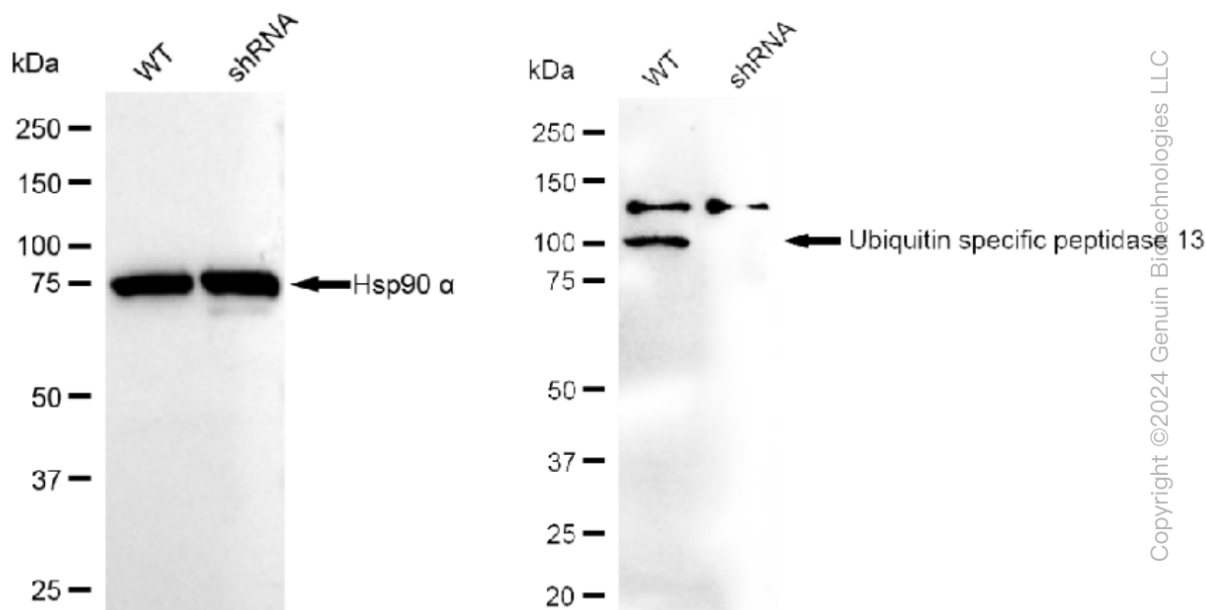
ORDERS

SALES@GENUINBIOTECH.COM
FAX: +1-540-855-7041

WWW.GENUINBIOTECH.COM

KD-Validated Anti-Ubiquitin specific peptidase 13 Recombinant Rabbit Monoclonal Antibody

PAGE 4



Western blotting analysis using anti-Ubiquitin specific peptidase 13 antibody (Cat#61725).

Ubiquitin specific peptidase 13 expression in wild type (WT) and Ubiquitin specific peptidase 13 shRNA knockdown (KD) HeLa cells with 30 µg of total cell lysates. β-Tubulin serves as a loading control. The blot was incubated with anti-Ubiquitin specific peptidase 13 antibody (Cat#61725, 1:5,000) and HRP-conjugated goat anti-rabbit secondary antibody (Cat#201, 1:20,000) respectively. Image was developed using FeQ™ ECL Substrate Kit (Cat#226).

SUPPORT

SUPPORT@GENUINBIOTECH.COM
TEL: +1-540-855-7041

ORDERS

SALES@GENUINBIOTECH.COM
FAX: +1-540-855-7041

WWW.GENUINBIOTECH.COM