

KD-Validated Anti-CD147 Recombinant Rabbit Monoclonal Antibody



Catalog #: 61730

Aliases

BSG; Basigin (Ok Blood Group); EMMPRIN; Tumor Cell-Derived Collagenase Stimulatory Factor; Extracellular Matrix Metalloproteinase Inducer; Basigin; EMPRIN; CD147; Leukocyte Activation Antigen M6; Collagenase Stimulatory Factor; Hepatoma-Associated Antigen; OK Blood Group Antigen; HAntibody18G; TCSF; 5F7; OK; Ok Blood Group; CD147 Antigen

Background

Gene Name: BSG

NCBI Gene Entry: [682](#)

UniProt Entry: [P35613](#)

Application Information

Molecular Weight: Predicted, 42 kDa, observed, 33-65 kDa

Clonality: Rabbit monoclonal antibody

Clone ID: 23GB1400

Species Reactivity: Human

Applications Tested: Western blotting (WB), flow cytometry (FCM), immunocytochemistry (IC)

Immunogen

A synthesized peptide derived from human CD147

Isotype

Rabbit IgG

Storage Buffer

Supplied in PBS (pH 7.4) containing 50% glycerol, and 0.02% sodium azide.

Storage

Store at -20 °C for one year.

Recommended Dilutions

Western Blotting (WB): 1:1,000-1:5,000

Flow Cytometry (FCM): 1:2,000

Immunocytochemistry (IC): 1:100-1:1,000

SUPPORT

SUPPORT@GENUINBIOTECH.COM
TEL: +1-540-855-7041

ORDERS

SALES@GENUINBIOTECH.COM
FAX: +1-540-855-7041

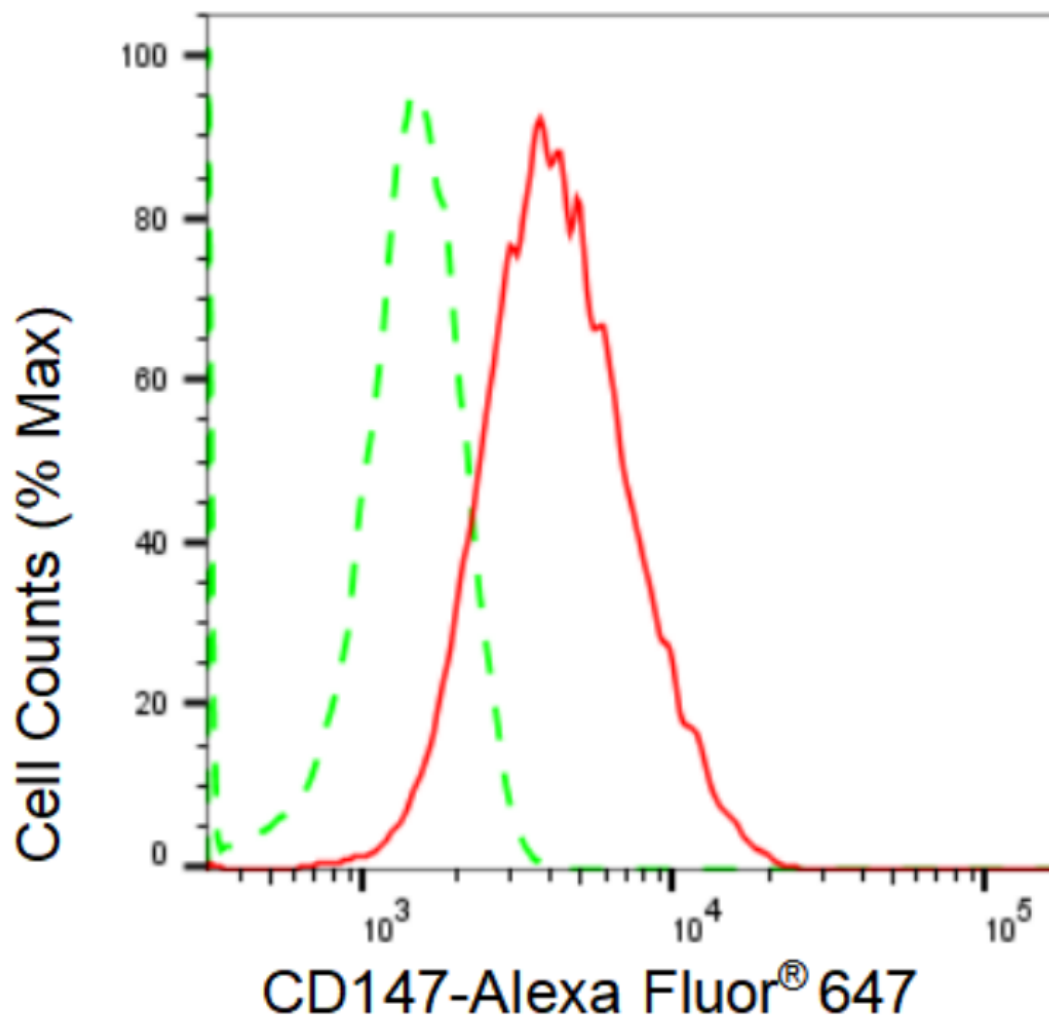
WWW.GENUINBIOTECH.COM

KD-Validated Anti-CD147 Recombinant Rabbit Monoclonal Antibody

PAGE 2

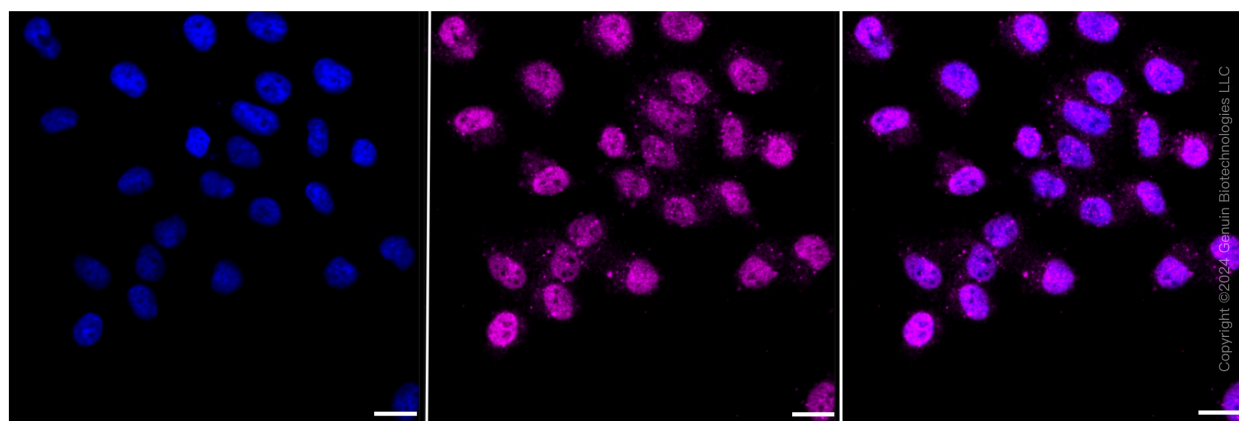
Note: This product is for research use only.

Validation Data



Copyright ©2024 Genuin Biotechnologies LLC

Flow cytometric analysis of CD147 expression in HepG2 cells using CD147 antibody (Cat#61730, 1:2,000). Green, isotype control; red, CD147.



Copyright ©2024 Genuin Biotechnologies LLC

SUPPORT

SUPPORT@GENUINBIOTECH.COM
TEL: +1-540-855-7041

ORDERS

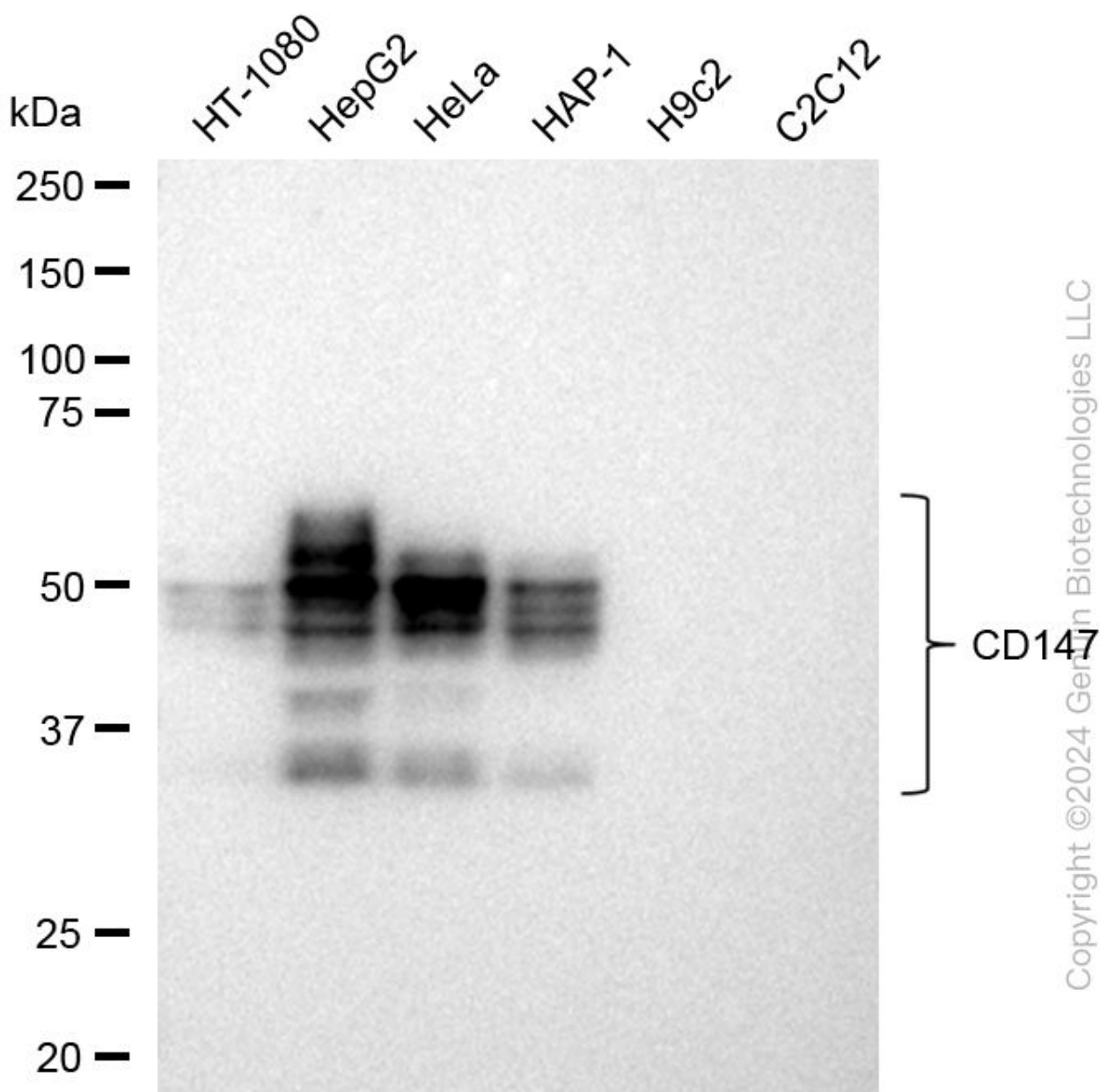
SALES@GENUINBIOTECH.COM
FAX: +1-540-855-7041

WWW.GENUINBIOTECH.COM

KD-Validated Anti-CD147 Recombinant Rabbit Monoclonal Antibody

PAGE 3

Immunocytochemical staining of HepG2 cells with CD147 antibody (Cat#61730, 1:1,000). Nuclei were stained blue with DAPI; CD147 was stained magenta with Alexa Fluor® 647. Images were taken using Leica stellaris 5. Protein abundance based on laser Intensity and smart gain: medium. Scale bar: 20 μ m.



Western blotting analysis using anti-CD147 antibody (Cat#61730). Total cell lysates (30 μ g) from various cell lines were loaded and separated by SDS-PAGE. The blot was incubated with anti-CD147 antibody (Cat#61730, 1:5,000) and HRP-conjugated goat anti-rabbit secondary antibody (Cat#201, 1:20,000) respectively. Image was developed using FeQ™ ECL Substrate Kit (Cat#226).

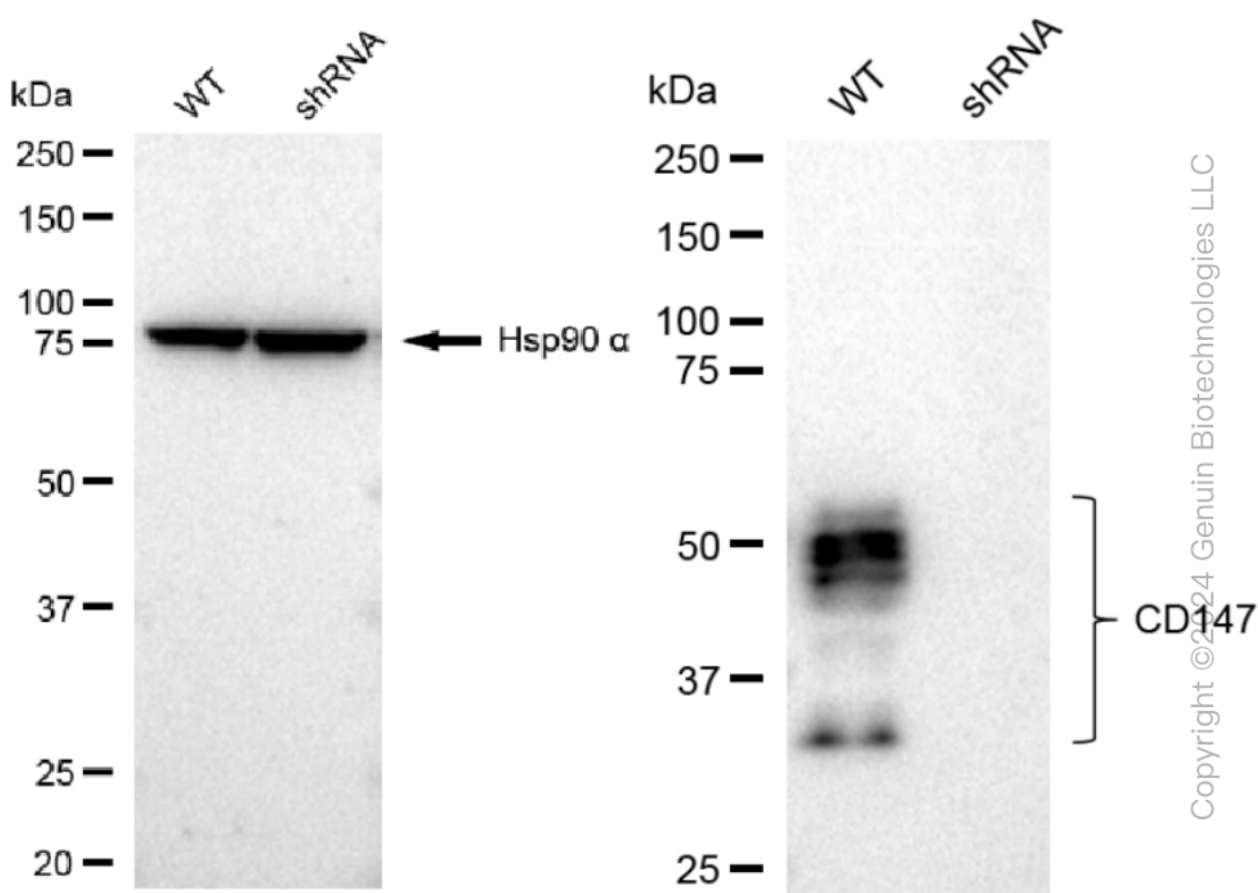
SUPPORT

SUPPORT@GENUINBIOTECH.COM
TEL: +1-540-855-7041

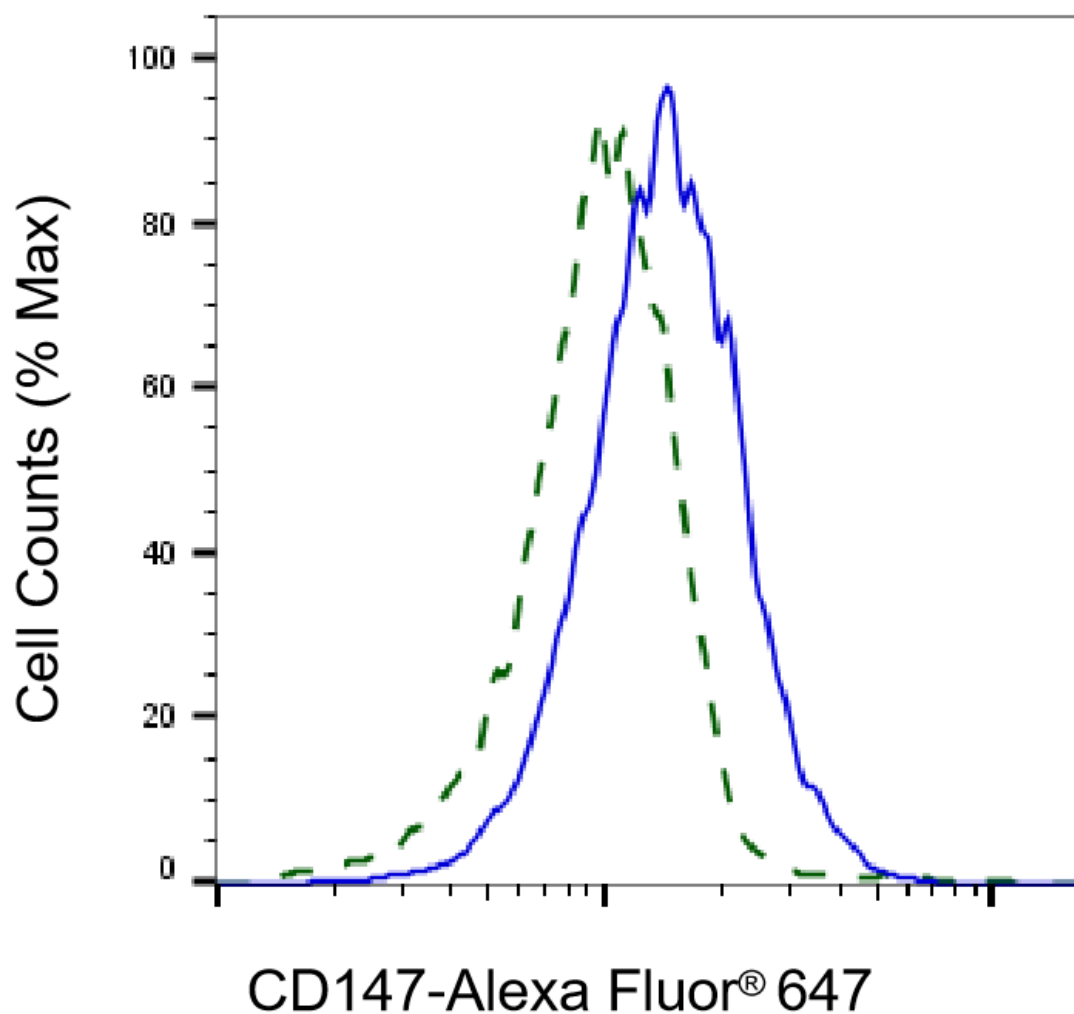
ORDERS

SALES@GENUINBIOTECH.COM
FAX: +1-540-855-7041

WWW.GENUINBIOTECH.COM

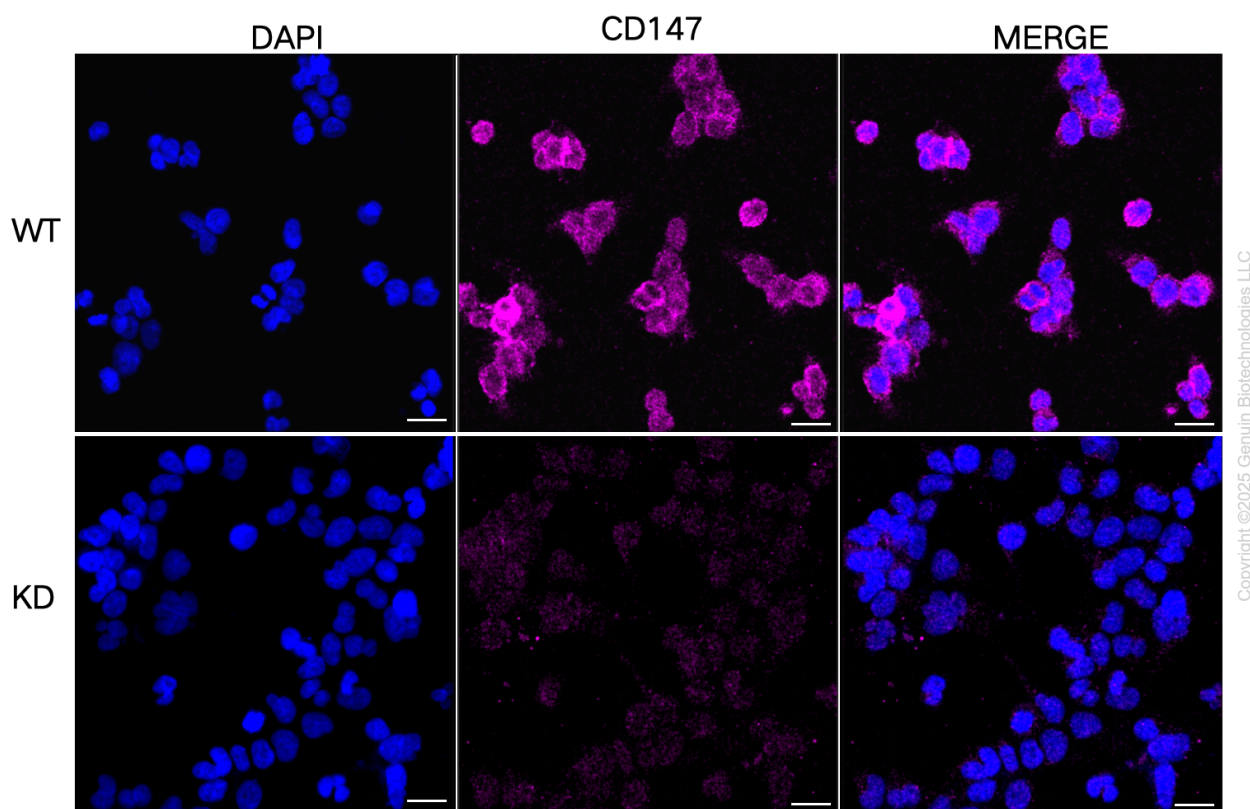


Western blotting analysis using anti-CD147 antibody (Cat#61730). CD147 expression in wild type (WT) and CD147 shRNA knockdown (KD) HeLa cells with 30 µg of total cell lysates. Hsp90 α serves as a loading control. The blot was incubated with anti-CD147 antibody (Cat#61730, 1:5,000) and HRP-conjugated goat anti-rabbit secondary antibody (Cat#201, 1:20,000) respectively. Image was developed using FeQ™ ECL Substrate Kit (Cat#226).



Copyright ©2025 Genuin Biotechnologies LLC

Validation of CD147 knockdown using flow cytometry. Wild-type(WT, Blue) and knockdown(KD, Green) HeLa cells were stained with anti-CD147 antibody (Cat#61730, 1:2,000) and analyzed using BD flow cytometer.



Immunocytochemical staining of HeLa cells using anti-CD147 antibody (Cat#61730, 1:1,000), Top panel: wild-type (WT); Bottom panel: CD147 shRNA knockdown (KD). Nuclei were stained blue with DAPI; CD147 was stained magenta with Alexa Fluor® 647. Scale bar, 20 μ m.