

KD-Validated Anti-EWS RNA Binding Protein 1 Rabbit Monoclonal Antibody



Catalog #: 61739

Aliases

EWSR1; EWS RNA Binding Protein 1; EWS; Ewing Sarcoma Breakpoint Region 1; RNA-Binding Protein EWS; Ewings Sarcoma EWS-Flt1 (Type 1) Oncogene; Ewing Sarcoma Breakpoint Region 1 Protein; EWS Oncogene; BK984G1.4; EWS-FLI1

Background

Gene Name: EWSR1

NCBI Gene Entry: [2130](#)

UniProt Entry: [Q01844](#)

Application Information

Molecular Weight: Predicted, 68 kDa, observed, 85 kDa

Clonality: Rabbit monoclonal antibody

Clone ID: 25GB3500

Species Reactivity: Human, mouse, rat

Applications Tested: Western blotting (WB), flow cytometry (FCM)

Immunogen

A synthesized peptide derived from human EWSR1

Isotype

Rabbit IgG

Storage Buffer

Supplied in PBS (pH 7.4) containing 50% glycerol, and 0.02% sodium azide.

Storage

Store at -20 °C for one year.

Recommended Dilutions

Western blotting (WB): 1:1,000-1:5,000

Flow Cytometry (FCM): 1:2,000

Note: This product is for research use only.

Validation Data

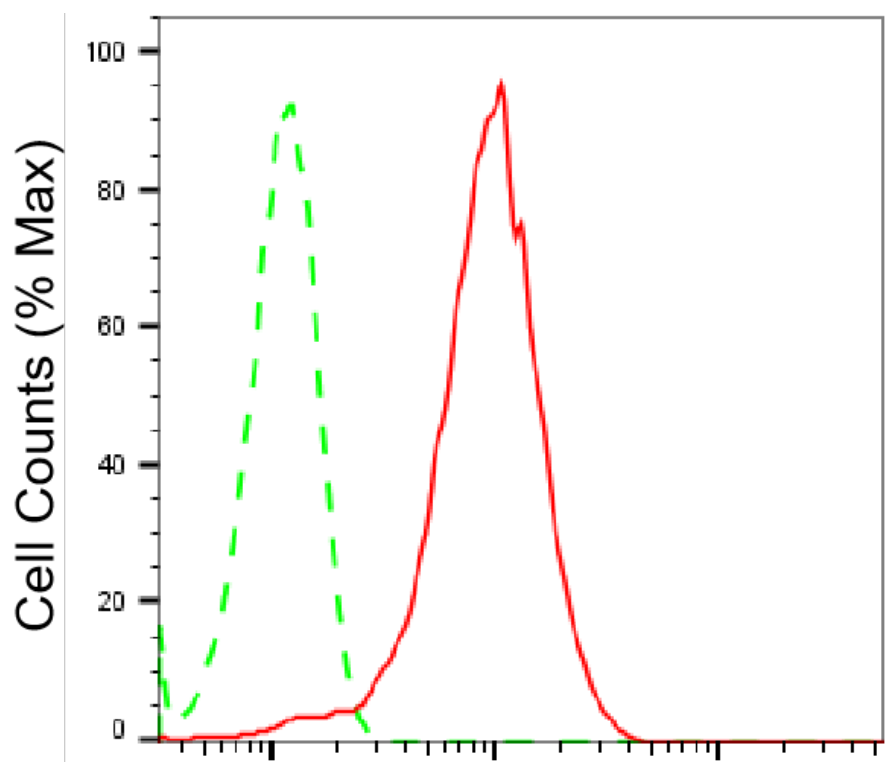
SUPPORT

SUPPORT@GENUINBIOTECH.COM
TEL: +1-540-855-7041

ORDERS

SALES@GENUINBIOTECH.COM
FAX: +1-540-855-7041

WWW.GENUINBIOTECH.COM



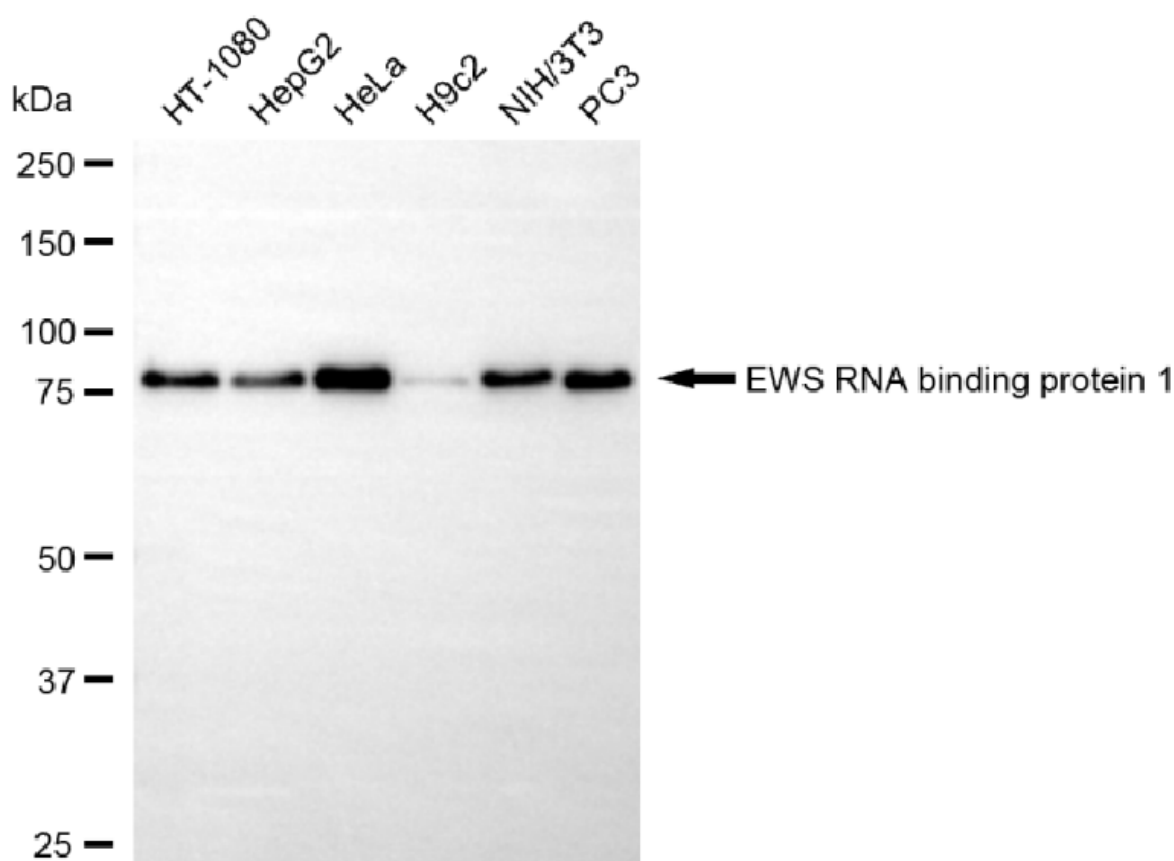
Copyright ©2025 Genuin Biotechnologies LLC

EWS RNA binding protein 1-Alexa Fluor® 647

Flow cytometric analysis of EWS RNA binding protein 1 expression in HepG2 cells using anti-EWS RNA binding protein 1 antibody (Cat#61739, 1:2,000). Green, isotype control; red, EWS RNA binding protein 1.

KD-Validated Anti-EWS RNA Binding Protein 1 Rabbit Monoclonal Antibody

PAGE 3



Western blotting analysis using anti-EWS RNA binding protein 1 antibody (Cat#61739). Total cell lysates (30 μ g) from various cell lines were loaded and separated by SDS-PAGE. The blot was incubated with anti-EWS RNA binding protein 1 antibody (Cat#61739, 1:5,000) and HRP-conjugated goat anti-rabbit secondary antibody (Cat#201, 1:20,000) respectively. Image was developed using NaQ™ ECL Substrate Kit (Cat#716).

SUPPORT

SUPPORT@GENUINBIOTECH.COM
TEL: +1-540-855-7041

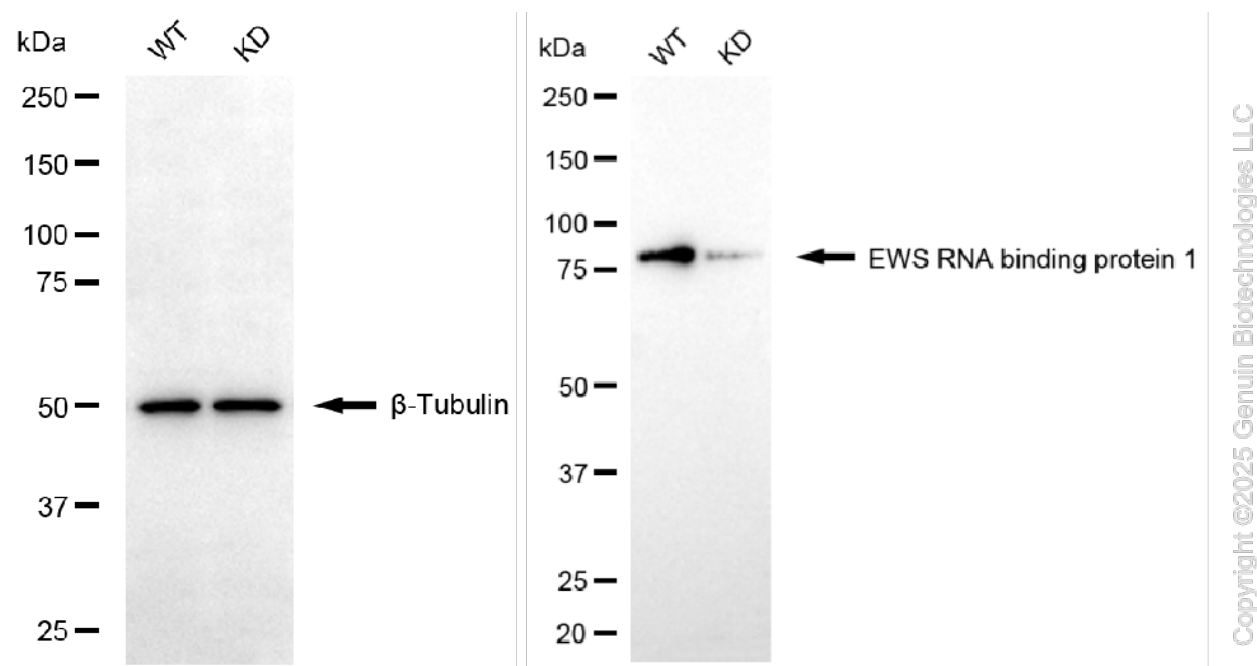
ORDERS

SALES@GENUINBIOTECH.COM
FAX: +1-540-855-7041

WWW.GENUINBIOTECH.COM

KD-Validated Anti-EWS RNA Binding Protein 1 Rabbit Monoclonal Antibody

PAGE 4



Western blotting analysis using anti-EWS RNA binding protein 1 antibody (Cat#61739). EWS RNA binding protein 1 expression in wild-type (WT) and EWS RNA binding protein 1 (EWSR1) knockdown (KD) 293T cells with 20 µg of total cell lysates. β-Tubulin serves as a loading control. The blot was incubated with anti-EWS RNA binding protein 1 antibody (Cat#61739, 1:5,000) and HRP-conjugated goat anti-rabbit secondary antibody (Cat#201, 1:20,000) respectively. Image was developed using NaQ™ ECL Substrate Kit (Cat#716).

SUPPORT

SUPPORT@GENUINBIOTECH.COM
TEL: +1-540-855-7041

ORDERS

SALES@GENUINBIOTECH.COM
FAX: +1-540-855-7041

WWW.GENUINBIOTECH.COM