

# KD-Validated Anti-Atg4C Recombinant Rabbit Monoclonal Antibody



**Catalog #: 61741**

## Aliases

ATG4C; Autophagy Related 4C Cysteine Peptidase; AUTL3; APG4C; AUTL1; Autophagy-Related Cysteine Endopeptidase 3; Autophagy-Related Protein 4 Homolog C; AUT-Like 3 Cysteine Endopeptidase; Cysteine Protease ATG4C; Autophagin-3; FLJ14867; HsAPG4C; AUT (S. Cerevisiae)-Like 1, Cysteine Endopeptidase; AUT-Like 1, Cysteine Endopeptidase (S. Cerevisiae); ATG4 Autophagy Related 4 Homolog C (S. Cerevisiae); APG4 Autophagy 4 Homolog C (S. Cerevisiae); Epididymis Secretory Sperm Binding Protein; Autophagy Related 4C, Cysteine Peptidase; ATG4 Autophagy Related 4 Homolog C; AUT-Like 1, Cysteine; Endopeptidase; APG4 Autophagy 4 Homolog C; EC 3.4.22.-; EC 3.4.22; APG4-C

## Background

Gene Name: ATG4C

NCBI Gene Entry: [84938](#)

UniProt Entry: [Q96DT6](#)

## Application Information

Molecular Weight: Predicted, 52 kDa, observed, 52 kDa

Clonality: Rabbit monoclonal antibody

Clone ID: 23GB670

Species Reactivity: Human

Applications Tested: Western blotting (WB), flow cytometry (FCM), immunocytochemistry (IC)

## Immunogen

A synthesized peptide derived from human ATG4C

## Isotype

Rabbit IgG

## Storage Buffer

Supplied in PBS (pH 7.4) containing 50% glycerol, and 0.02% sodium azide.

## Storage

Store at -20 °C for one year.

## Recommended Dilutions

Western Blotting (WB): 1:2,000-1:10,000

---

### SUPPORT

SUPPORT@GENUINBIOTECH.COM  
TEL: +1-540-855-7041

### ORDERS

SALES@GENUINBIOTECH.COM  
FAX: +1-540-855-7041

[WWW.GENUINBIOTECH.COM](http://WWW.GENUINBIOTECH.COM)

# KD-Validated Anti-Atg4C Recombinant Rabbit Monoclonal Antibody

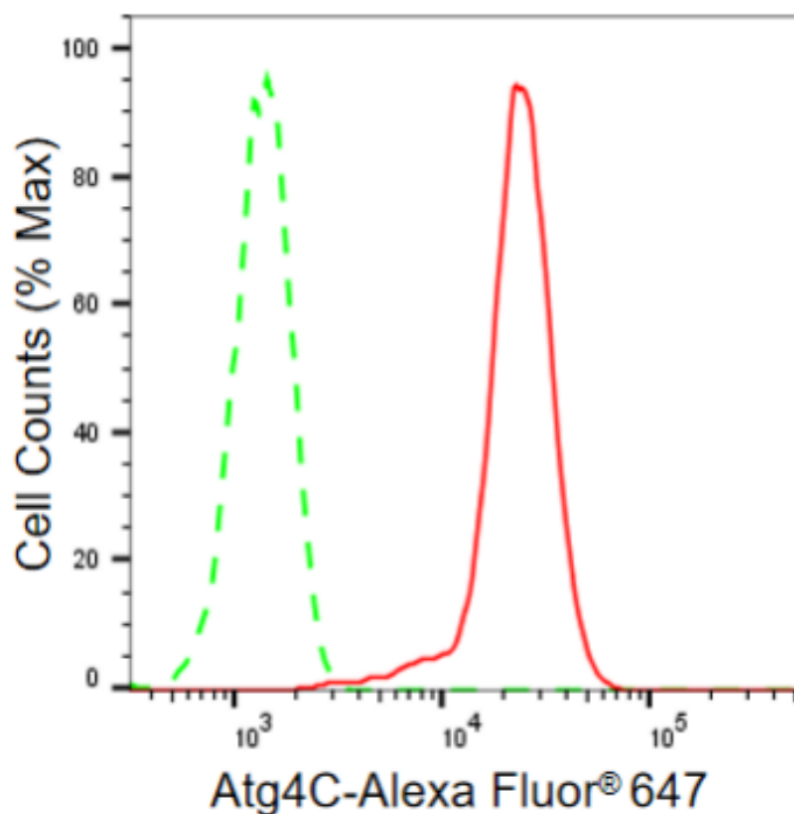
PAGE 2

Flow Cytometry (FCM): 1:2,000

Immunocytochemistry (IC): 1:100-1:1,000

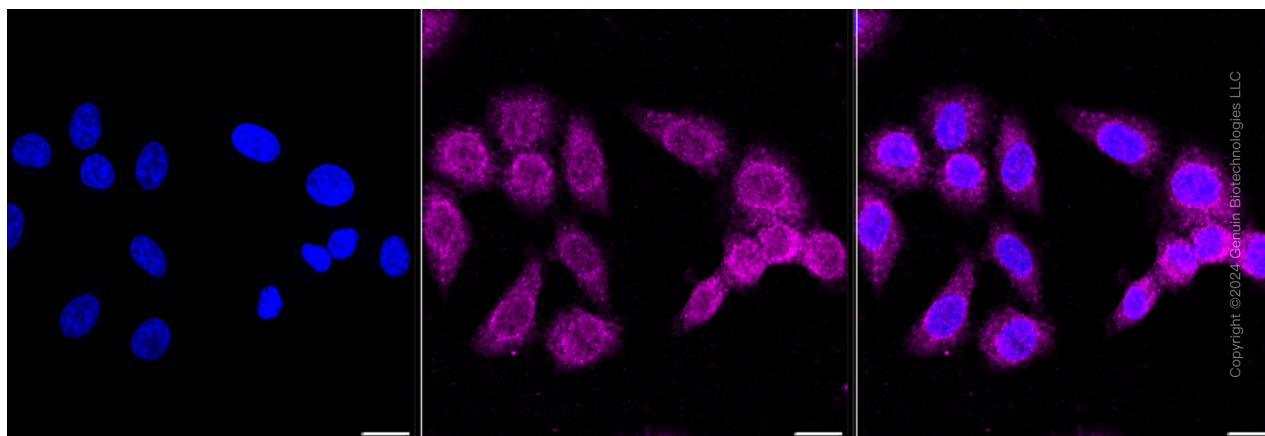
**Note:** This product is for research use only.

## Validation Data



Copyright ©2024 Genuin Biotechnologies LLC

Flow cytometric analysis of Atg4C expression in HepG2 cells using Atg4C antibody (Cat#61741, 1:2,000). Green, isotype control; red, Atg4C.



Copyright ©2024 Genuin Biotechnologies LLC

Immunocytochemical staining of HepG2 cells with Atg4C antibody (Cat#61741, 1:1,000). Nuclei

### SUPPORT

SUPPORT@GENUINBIOTECH.COM  
TEL: +1-540-855-7041

### ORDERS

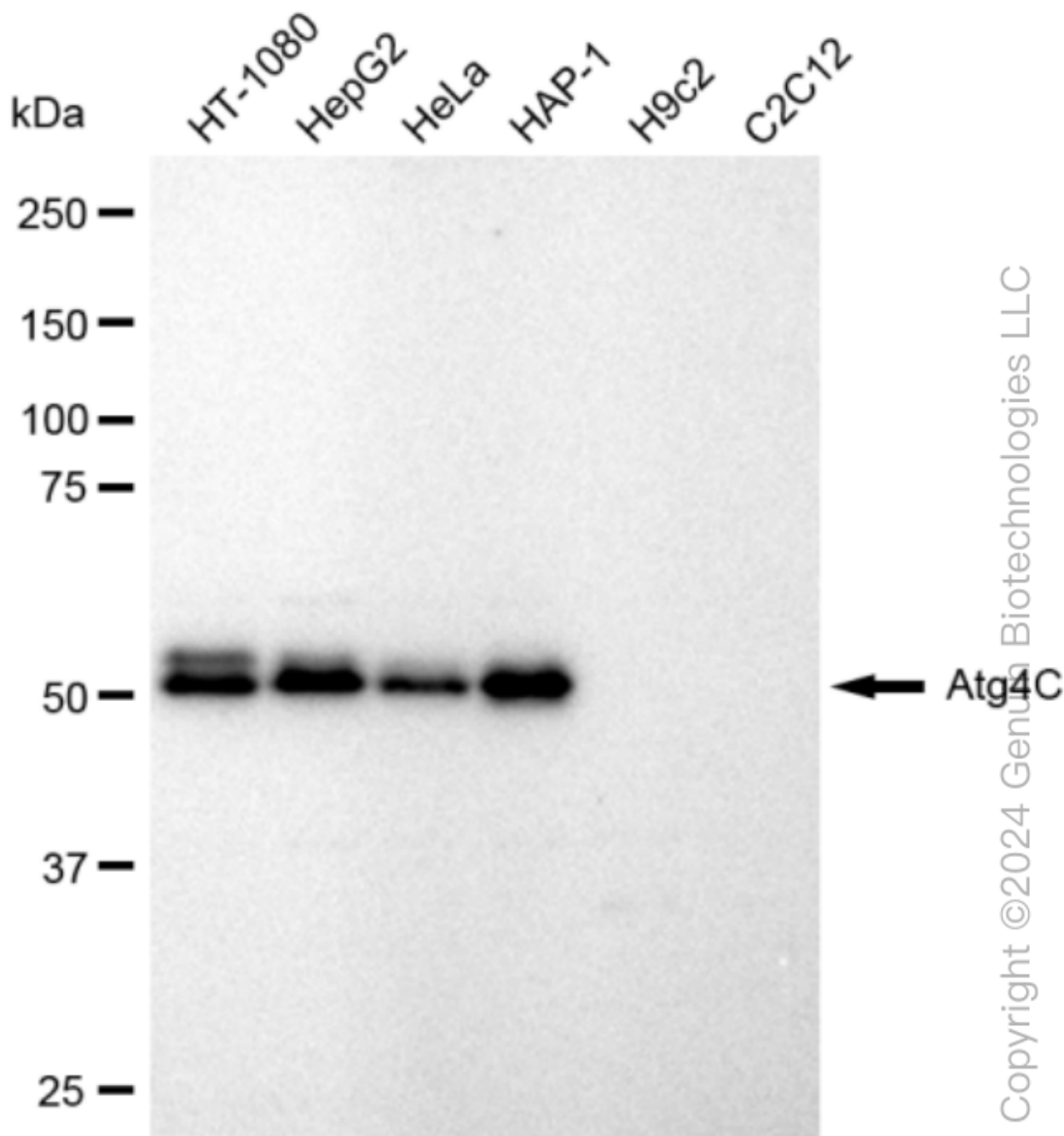
SALES@GENUINBIOTECH.COM  
FAX: +1-540-855-7041

WWW.GENUINBIOTECH.COM

## KD-Validated Anti-Atg4C Recombinant Rabbit Monoclonal Antibody

PAGE 3

were stained blue with DAPI; Atg4C was stained magenta with Alexa Fluor® 647. Images were taken using Leica stellaris 5. Protein abundance based on laser Intensity and smart gain: Very low. Scale bar: 20  $\mu$ m.



Western blotting analysis using anti-Atg4C antibody (Cat#61741). Total cell lysates (30  $\mu$ g) from various cell lines were loaded and separated by SDS-PAGE. The blot was incubated with anti-Atg4C antibody (Cat#61741, 1:10,000) and HRP-conjugated goat anti rabbit secondary antibody (Cat#201, 1:50,000) respectively. Image was developed using FeQ™ ECL Substrate Kit (Cat#226).

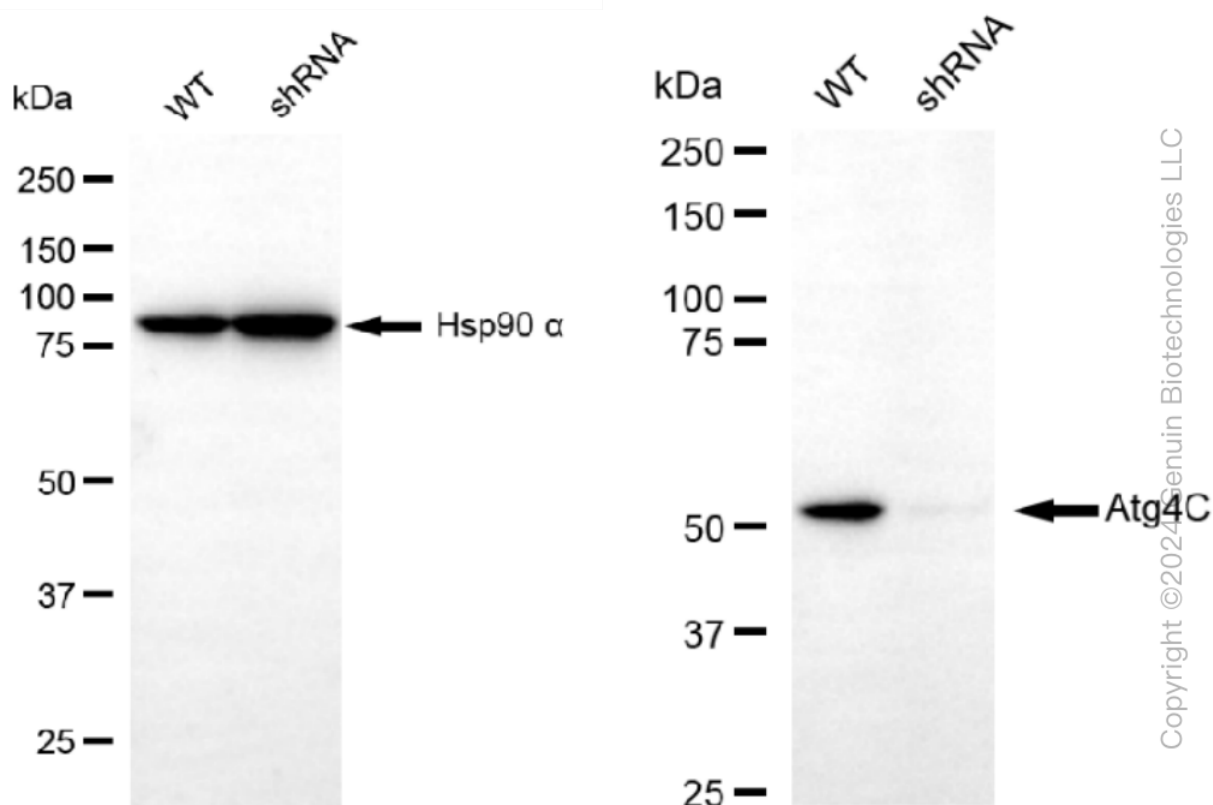
### SUPPORT

SUPPORT@GENUINBIOTECH.COM  
TEL: +1-540-855-7041

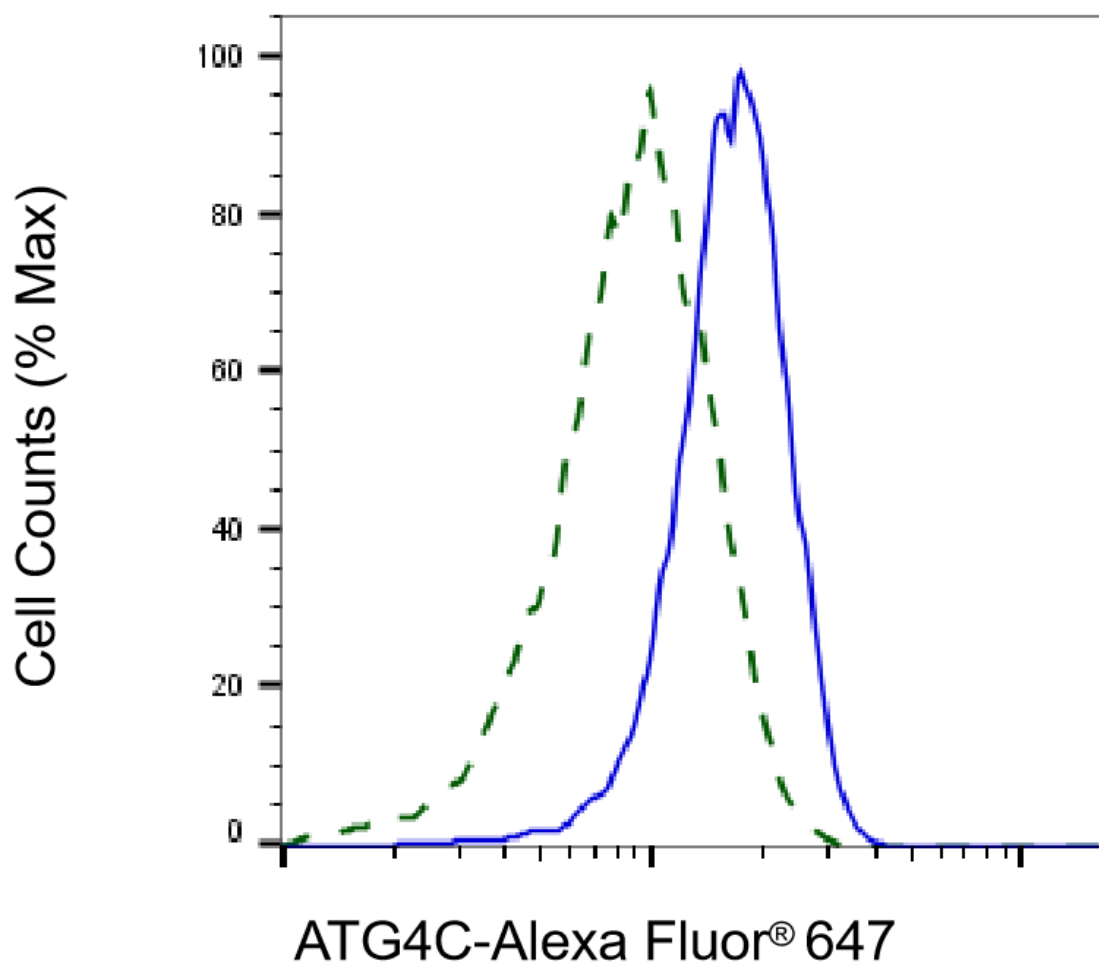
### ORDERS

SALES@GENUINBIOTECH.COM  
FAX: +1-540-855-7041

WWW.GENUINBIOTECH.COM



Western blotting analysis using anti-Atg4C antibody (Cat#61741). Atg4C expression in wild type (WT) and Atg4C shRNA knockdown (KD) HeLa cells with 30  $\mu$ g of total cell lysates.  $\beta$ -Tubulin serves as a loading control. The blot was incubated with anti-Atg4C antibody (Cat#61741, 1:10,000) and HRP-conjugated goat anti rabbit secondary antibody (Cat#201, 1:50,000) respectively. Image was developed using FeQ™ ECL Substrate Kit (Cat#226).



Copyright ©2025 Genuin Biotechnologies LLC

Validation of ATG4C knockdown using flow cytometry. Wild-type(WT, Blue) and knockdown(KD, Green) HeLa cells were stained with anti-ATG4C antibody (Cat#61741, 1:2,000) and analyzed using BD flow cytometer.