

KD-Validated Anti-L1 Cell Adhesion Molecule Rabbit Monoclonal Antibody



Catalog #: 61742

Aliases

L1CAM; L1 Cell Adhesion Molecule; NCAM-L1; CAML1; Neural Cell Adhesion Molecule L1; CD171; MIC5; Antigen Identified By Monoclonal Antibody R1; N-CAM-L1; HSAS1; HSAS; MASA; SPG1; S10; CD171 Antigen; N-CAML1; HYCX

Background

Gene Name: L1CAM

NCBI Gene Entry: [3897](#)

UniProt Entry: [P32004](#)

Application Information

Molecular Weight: Predicted, 140 kDa; observed, 80,220 kDa

Clonality: Rabbit monoclonal antibody

Clone ID: 25GB3510

Species Reactivity: Human

Applications Tested: Western blotting (WB), flow cytometry (FCM)

Immunogen

Recombinant protein of human L1CAM

Isotype

Rabbit IgG

Storage Buffer

Supplied in PBS (pH 7.4) containing 50% glycerol, and 0.02% sodium azide.

Storage

Store at -20 °C for one year.

Recommended Dilutions

Western Blotting (WB): 1:1,000-1:5,000

Flow Cytometry (FCM): 1:2,000

Note: This product is for research use only.

Validation Data

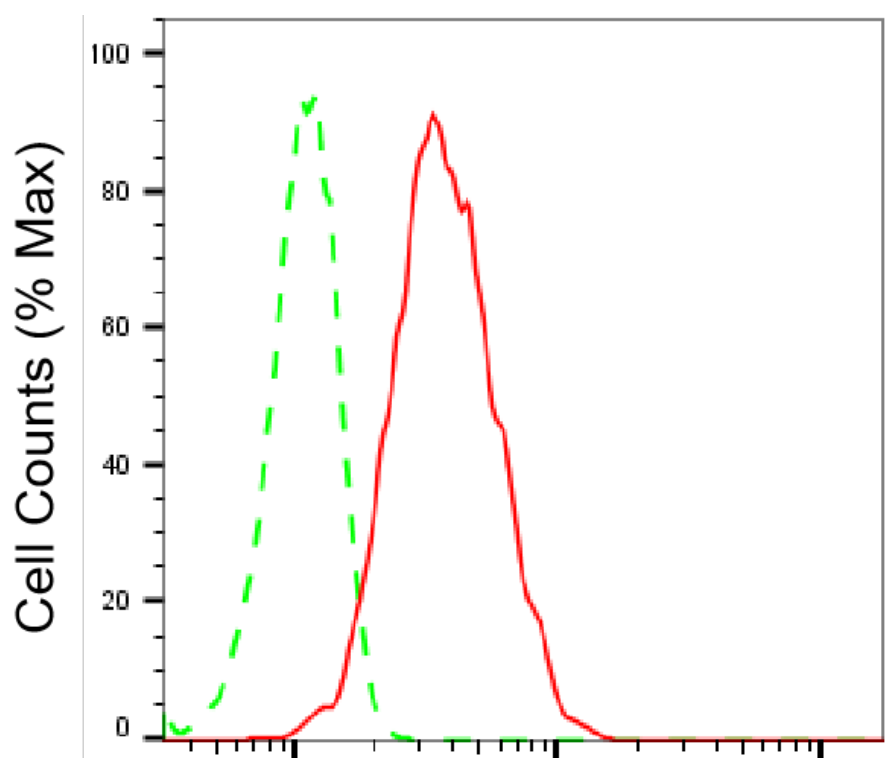
SUPPORT

SUPPORT@GENUINBIOTECH.COM
TEL: +1-540-855-7041

ORDERS

SALES@GENUINBIOTECH.COM
FAX: +1-540-855-7041

WWW.GENUINBIOTECH.COM



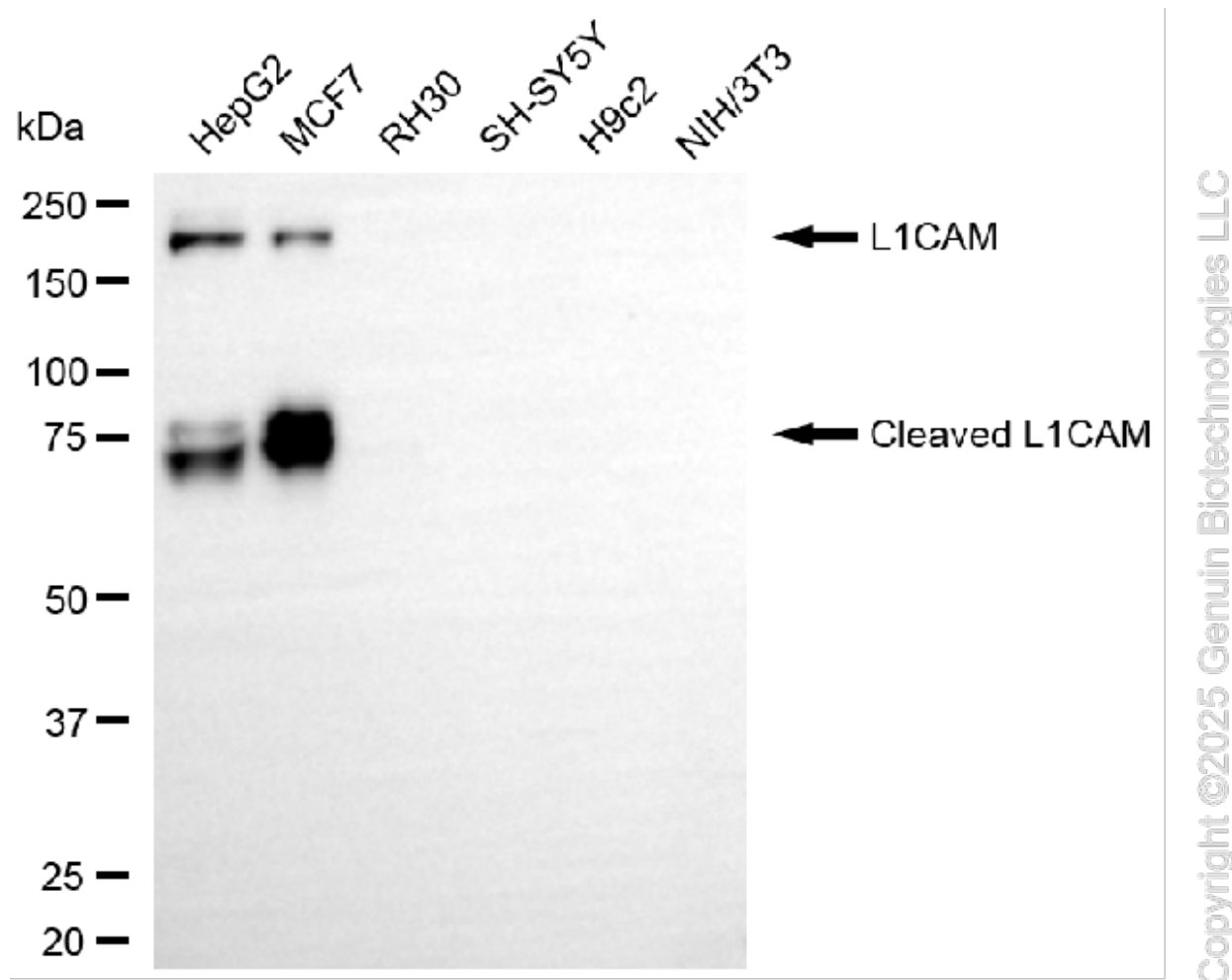
Copyright ©2025 Genuin Biotechnologies LLC

L1 cell adhesion molecule-Alexa Fluor® 647

Flow cytometric analysis of L1 cell adhesion molecule expression in HepG2 cells using anti-L1 cell adhesion molecule antibody (Cat#61742, 1:2,000). Green, isotype control; red, L1 cell adhesion molecule.

KD-Validated Anti-L1 Cell Adhesion Molecule Rabbit Monoclonal Antibody

PAGE 3



Western blotting analysis using anti-L1 cell adhesion molecule antibody (Cat#61742). Total cell lysates (30 μ g) from various cell lines were loaded and separated by SDS-PAGE. The blot was incubated with anti-L1 cell adhesion molecule antibody (Cat#61742, 1:5,000) and HRP-conjugated goat anti-mouse secondary antibody (Cat#101, 1:20,000) respectively. Image was developed using NaQ™ ECL Substrate Kit (Cat#716).

SUPPORT

SUPPORT@GENUINBIOTECH.COM
TEL: +1-540-855-7041

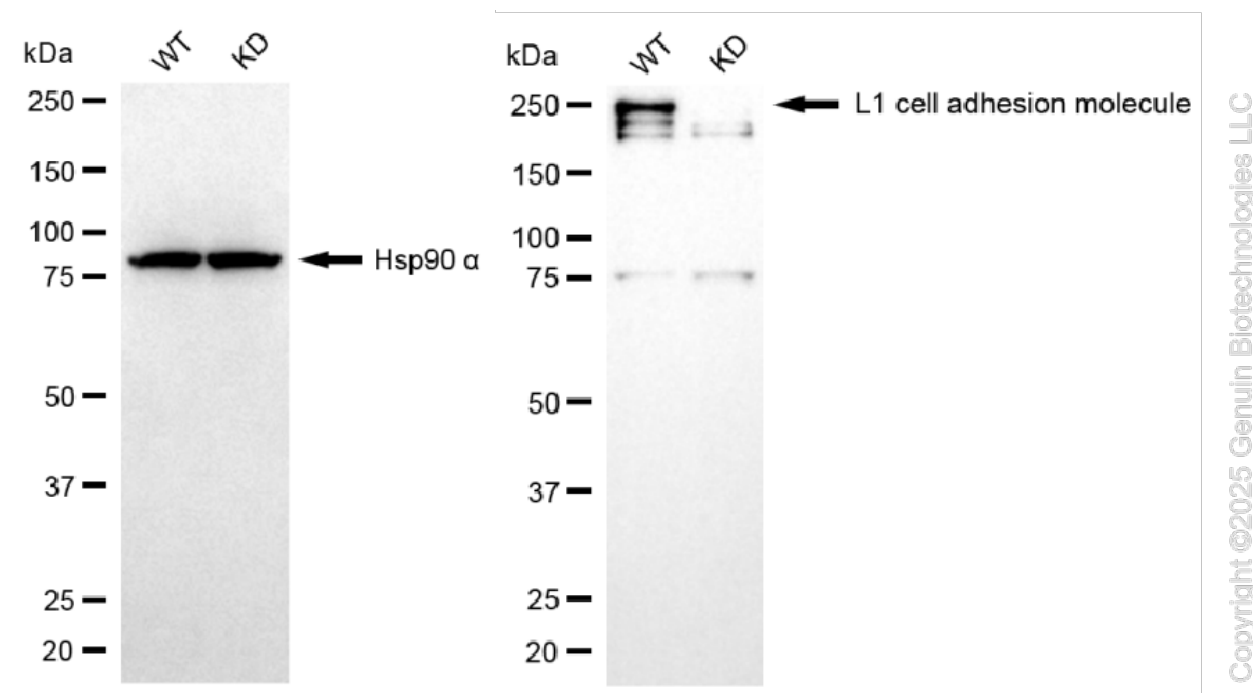
ORDERS

SALES@GENUINBIOTECH.COM
FAX: +1-540-855-7041

WWW.GENUINBIOTECH.COM

KD-Validated Anti-L1 Cell Adhesion Molecule Rabbit Monoclonal Antibody

PAGE 4



Western blotting analysis using anti-L1 cell adhesion molecule antibody (Cat#61742). L1 cell adhesion molecule expression in wild type (WT) and L1 cell adhesion molecule (L1CAM) knockdown (KD) HSHC cells with 20 μ g of total cell lysates. Hsp90 α serves as a loading control. The blot was incubated with anti-L1 cell adhesion molecule antibody (Cat#61742, 1:5,000) and HRP-conjugated goat anti-rabbit secondary antibody (Cat#201, 1:20,000) respectively. Image was developed using NaQ™ ECL Substrate Kit (Cat#716).

SUPPORT

SUPPORT@GENUINBIOTECH.COM
TEL: +1-540-855-7041

ORDERS

SALES@GENUINBIOTECH.COM
FAX: +1-540-855-7041

WWW.GENUINBIOTECH.COM