

KD-Validated Anti-Cullin4A Recombinant Rabbit Monoclonal Antibody



Catalog #: 61744

Aliases

CUL4A; Cullin 4A; Cullin-4A; CUL-4A

Background

Gene Name: CUL4A

NCBI Gene Entry: [8451](#)

UniProt Entry: [Q13619](#)

Application Information

Molecular Weight: Predicted, 88 kDa, observed, 80 kDa

Clonality: Rabbit monoclonal antibody

Clone ID: 23GB790

Species Reactivity: Human

Applications Tested: Western blotting (WB), flow cytometry (FCM), immunocytochemistry (IC)

Immunogen

A synthesized peptide derived from human beta Cullin4A

Isotype

Rabbit IgG

Storage Buffer

Supplied in PBS (pH 7.4) containing 50% glycerol, and 0.02% sodium azide.

Storage

Store at -20 °C for one year.

Recommended Dilutions

Western Blotting (WB): 1:2,000-1:10,000

Flow Cytometry (FCM): 1:2,000

Immunocytochemistry (IC): 1:100-1:1,000

Note: This product is for research use only.

Validation Data

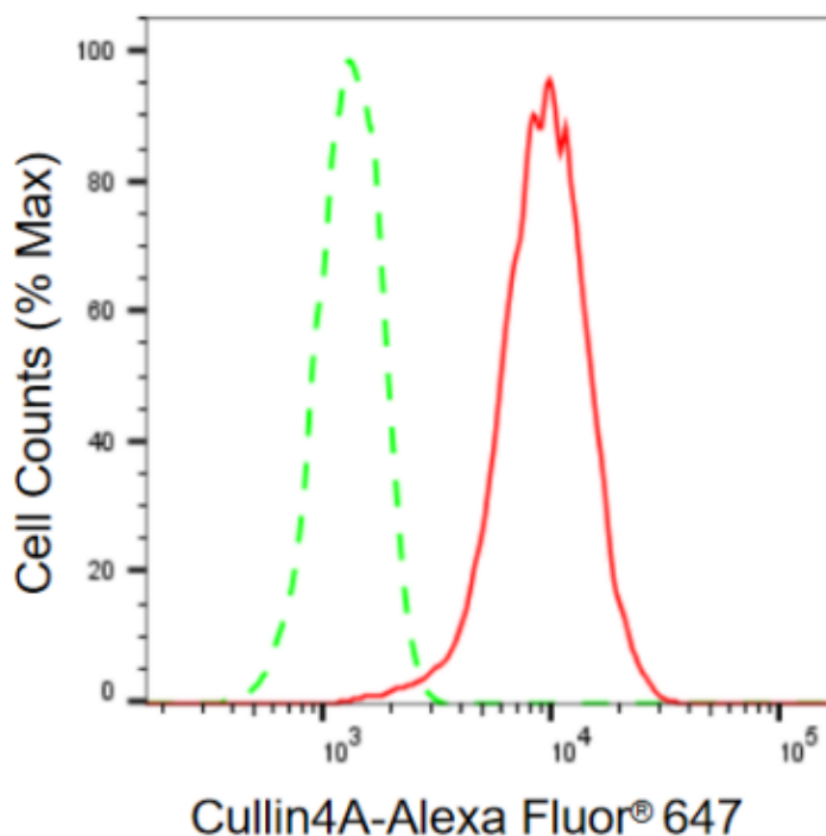
SUPPORT

SUPPORT@GENUINBIOTECH.COM
TEL: +1-540-855-7041

ORDERS

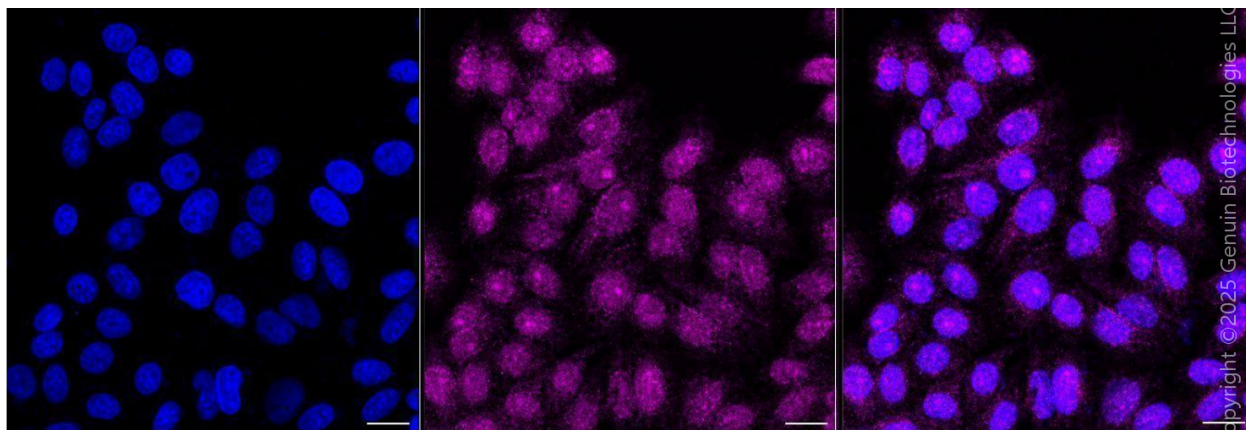
SALES@GENUINBIOTECH.COM
FAX: +1-540-855-7041

WWW.GENUINBIOTECH.COM



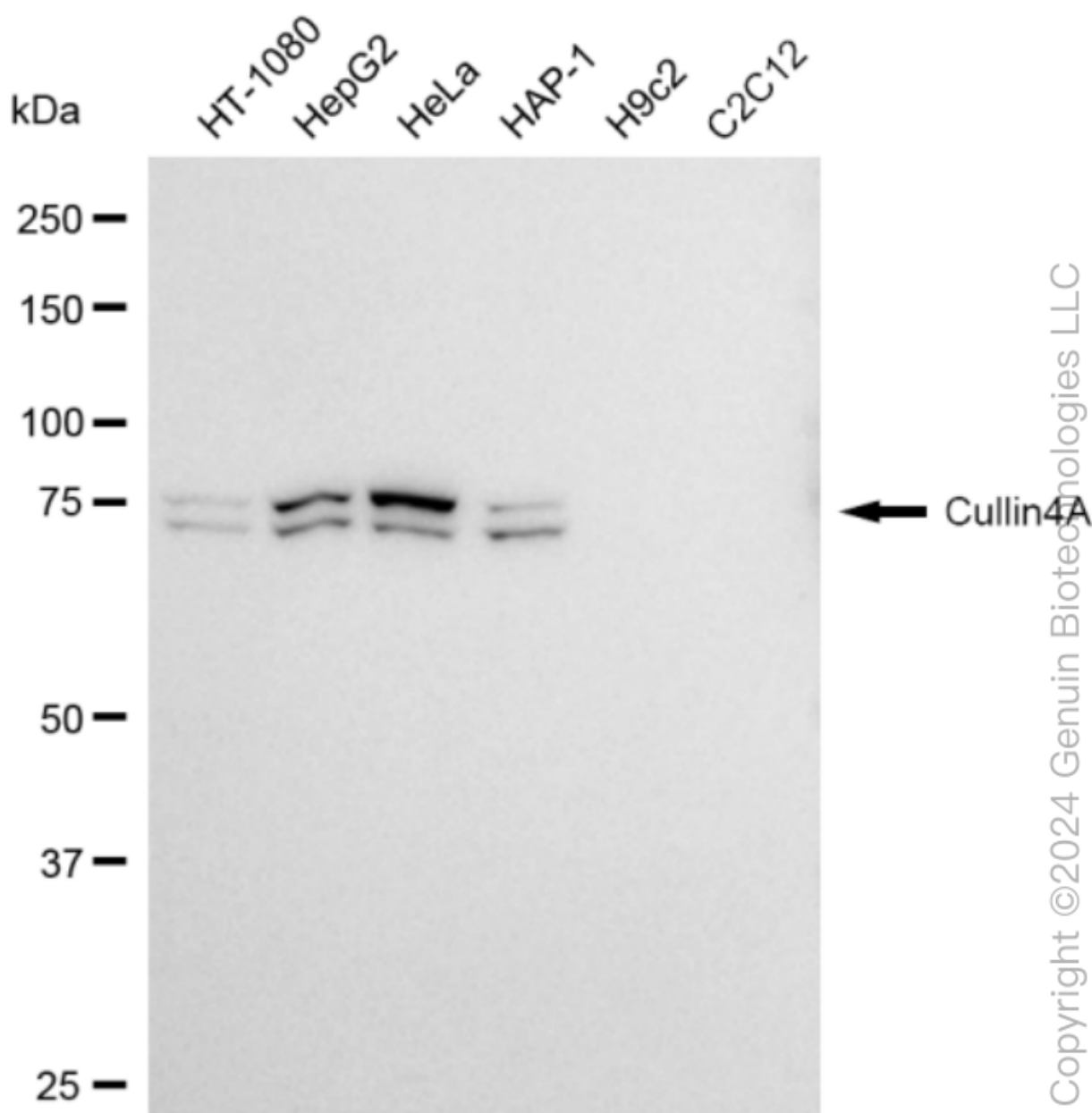
Copyright ©2024 Genuin Biotechnologies LLC

Flow cytometric analysis of Cullin4A expression in HeLa cells using Cullin4A antibody (Cat#61744, 1:2,000). Green, isotype control; red, Cullin4A.



Copyright ©2025 Genuin Biotechnologies LLC

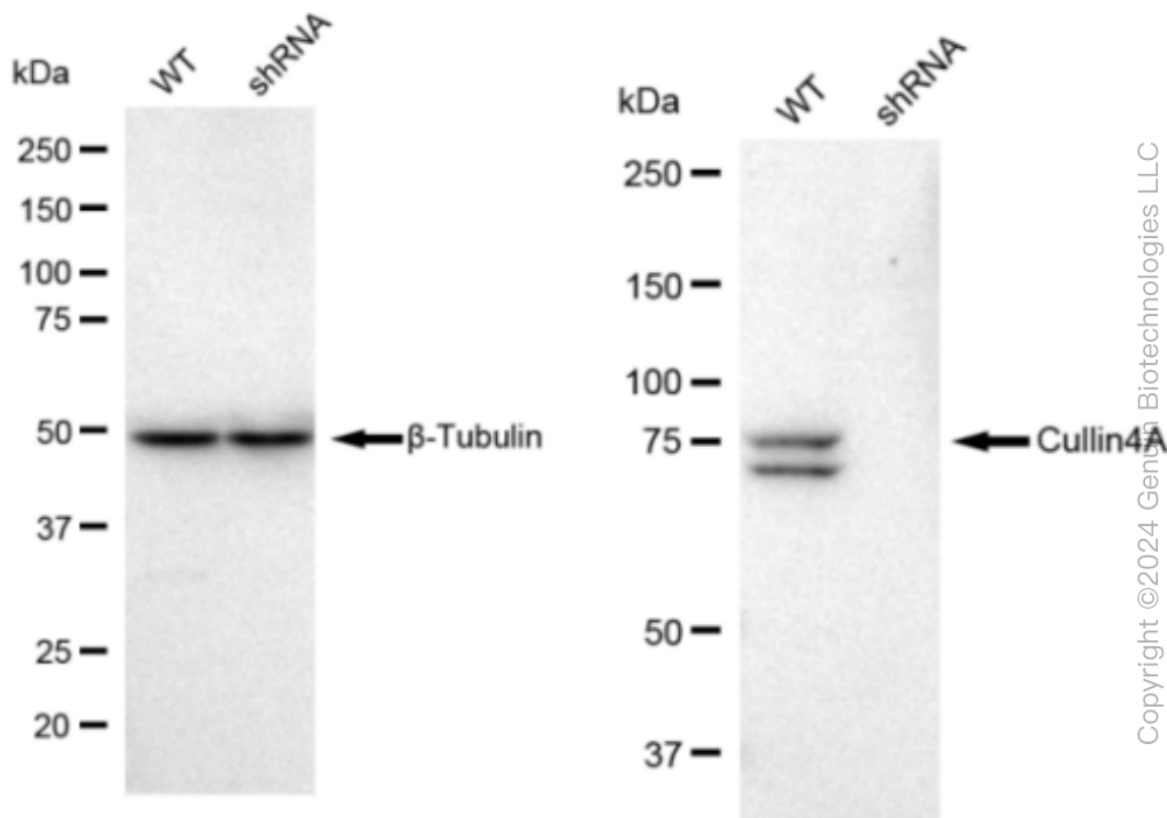
Immunocytochemical staining of HepG2 cells with anti-Cullin4A antibody (Cat#61744, 1:1,000). Nuclei were stained blue with DAPI; Cullin4A was stained magenta with Alexa Fluor® 647. Images were taken using Leica stellaris 5. Protein abundance based on laser Intensity and smart gain: Medium. Scale bar, 20 μ m.



Western blotting analysis using anti-Cullin4A antibody (Cat#61744). Total cell lysates (30 µg) from various cell lines were loaded and separated by SDS-PAGE. The blot was incubated with anti-Cullin4A antibody (Cat#61744, 1:10,000) and HRP-conjugated goat anti rabbit secondary antibody (Cat#201, 1:50,000) respectively. Image was developed using FeQ™ ECL Substrate Kit (Cat#226).

KD-Validated Anti-Cullin4A Recombinant Rabbit Monoclonal Antibody

PAGE 4



Western blotting analysis using anti-Cullin4A antibody (Cat#61744). Cullin4A expression in wild type (WT) and Cullin4A shRNA knockdown (KD) HeLa cells with 30 µg of total cell lysates. β-Tubulin serves as a loading control. The blot was incubated with anti-Cullin4A antibody (Cat#61744, 1:10,000) and HRP-conjugated goat anti rabbit secondary antibody (Cat#201, 1:50,000) respectively. Image was developed using FeQ™ ECL Substrate Kit (Cat#226).

SUPPORT

SUPPORT@GENUINBIOTECH.COM
TEL: +1-540-855-7041

ORDERS

SALES@GENUINBIOTECH.COM
FAX: +1-540-855-7041

WWW.GENUINBIOTECH.COM