

# KD-Validated Anti-SX2IP Recombinant Rabbit Monoclonal Antibody



**Catalog #: 61751**

## Aliases

SSX2IP; SSX Family Member 2 Interacting Protein; HMsd1; Synovial Sarcoma, X Breakpoint 2 Interacting Protein; Afadin- And Alpha-Actinin-Binding Protein; Afadin DIL Domain-Interacting Protein; SSX2-Interacting Protein; ADIP; KIAA0923

## Background

Gene Name: SSX2IP

NCBI Gene Entry: [117178](#)

UniProt Entry: [Q9Y2D8](#)

## Application Information

Molecular Weight: Predicted, 71 kDa; observed, 68-74 kDa

Clonality: Rabbit monoclonal antibody

Clone ID: 25GB3560

Species Reactivity: Human, rat

Applications Tested: Western blotting (WB)

## Immunogen

A synthesized peptide derived from human SSX2IP

## Isotype

Rabbit IgG

## Storage Buffer

Supplied in PBS (pH 7.4) containing 50% glycerol, and 0.02% sodium azide.

## Storage

Store at -20 °C for one year.

## Recommended Dilutions

Western Blotting (WB): 1:1,000-1:5,000

**Note:** This product is for research use only.

## Validation Data

---

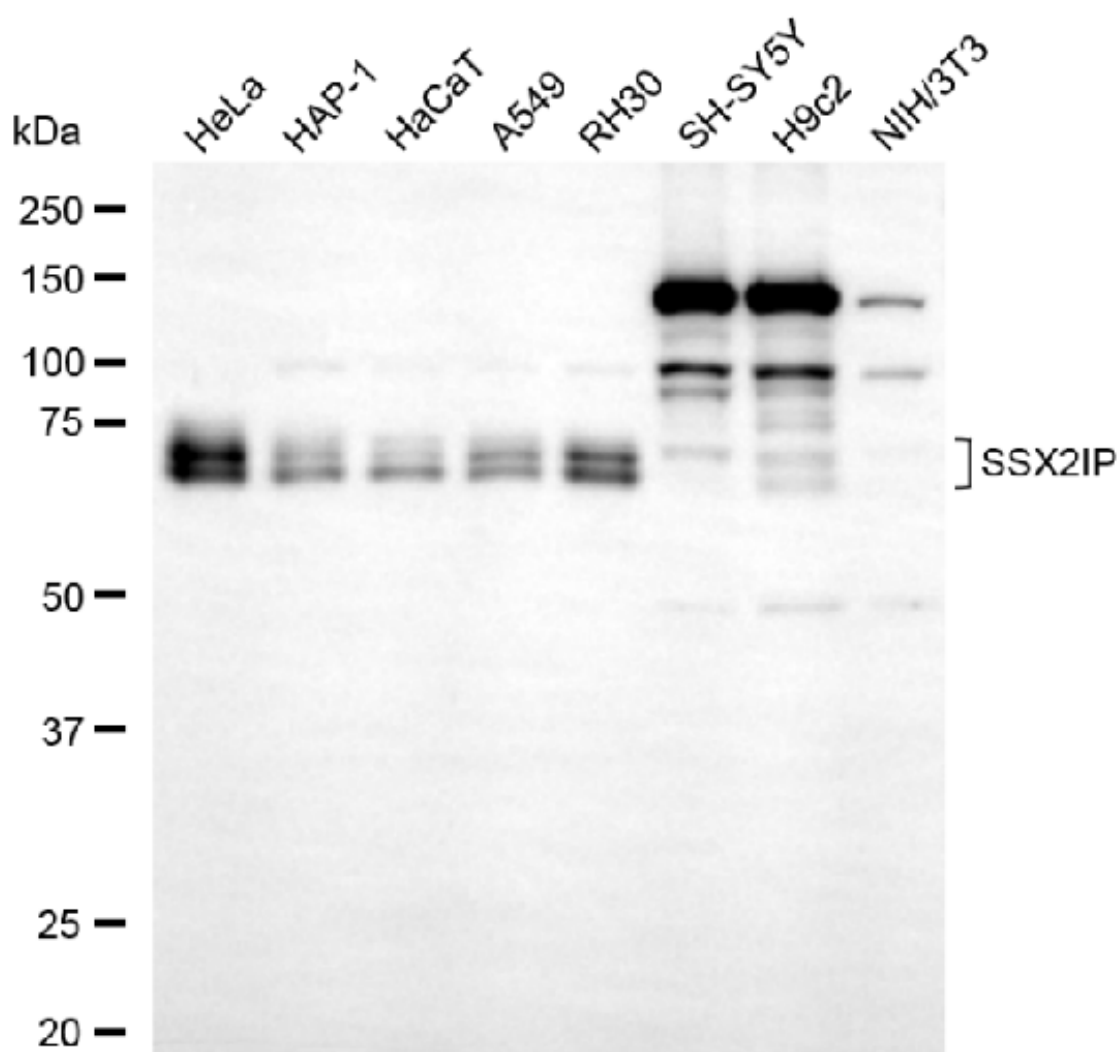
### SUPPORT

SUPPORT@GENUINBIOTECH.COM  
TEL: +1-540-855-7041

### ORDERS

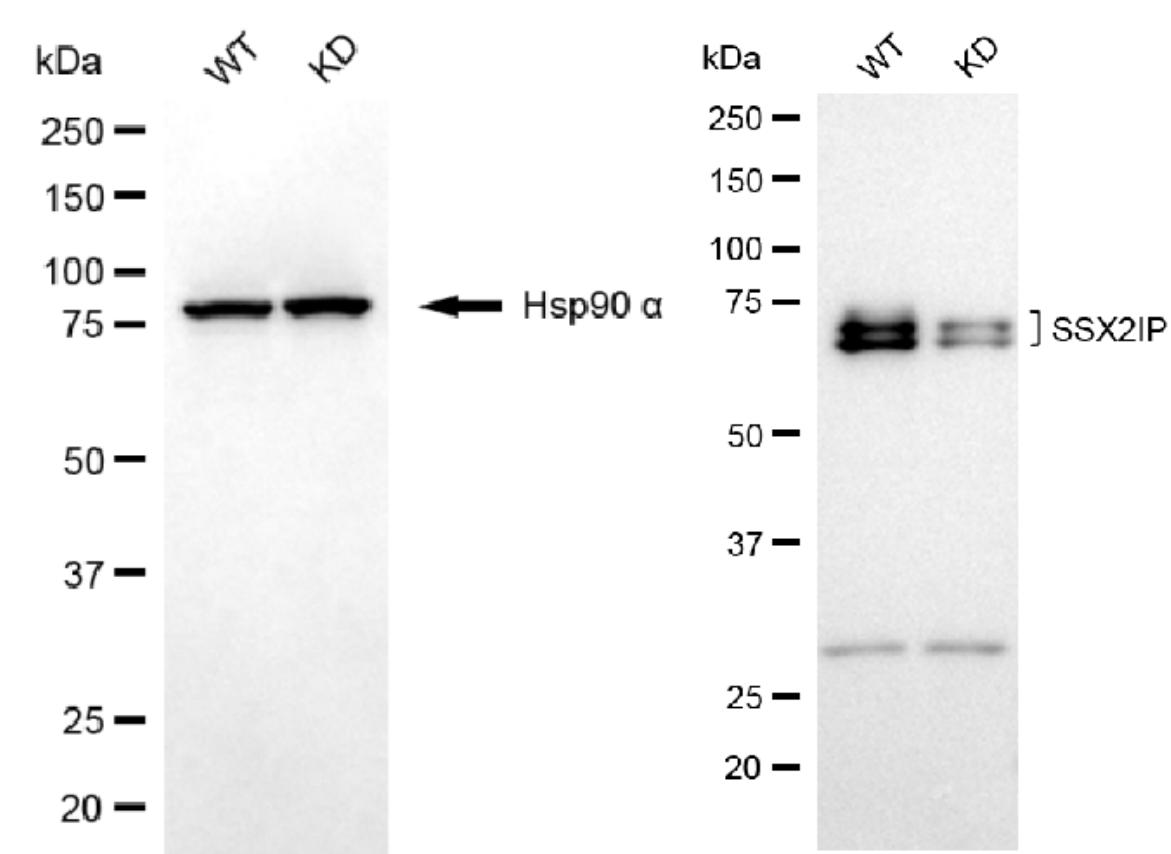
SALES@GENUINBIOTECH.COM  
FAX: +1-540-855-7041

[WWW.GENUINBIOTECH.COM](http://WWW.GENUINBIOTECH.COM)



Copyright ©2025 Genuin Biotechnologies LLC

Western blotting analysis using anti-SSX2IP antibody (Cat#61751). Total cell lysates (30 µg) from various cell lines were loaded and separated by SDS-PAGE. The blot was incubated with anti-SSX2IP antibody (Cat#61751, 1:5,000) and HRP-conjugated goat anti-rabbit secondary antibody (Cat#201, 1:20,000) respectively. Image was developed using NaQ™ ECL Substrate Kit (Cat#716).



Copyright ©2025 Genuin Biotechnologies LLC

Western blotting analysis using anti-SSX2IP antibody (Cat#61751). SSX2IP expression in wild type (WT) and SSX2IP knockdown (KD) HSHC cells with 20 µg of total cell lysates. Hsp90 α serves as a loading control. The blot was incubated with anti-SSX2IP antibody (Cat#61751, 1:5,000) and HRP-conjugated goat anti-rabbit secondary antibody (Cat#201, 1:20,000) respectively. Image was developed using NaQ™ ECL Substrate Kit (Cat#716).