

# KD-Validated Anti-Prosaposin Recombinant Rabbit Monoclonal Antibody



**Catalog #: 61752**

## Aliases

PSAP; Prosaposin; GLBA; SAP1; Sphingolipid Activator Protein-1; Sphingolipid Activator Protein-2; Proactivator Polypeptide; Precursor Of Saposins; Saposin-A; Saposin-B; Saposin-C; Saposin-D; SAP2; Variant Gaucher Disease And Variant Metachromatic Leukodystrophy; PARK24; PSAPD

## Background

Gene Name: PSAP

NCBI Gene Entry: [5660](#)

UniProt Entry: [P07602](#)

## Application Information

Molecular Weight: Predicted, 58 kDa; observed, 74 kDa

Clonality: Rabbit monoclonal antibody

Clone ID: 25GB3565

Species Reactivity: Human

Applications Tested: Western blotting (WB), flow cytometry (FCM), immunocytochemistry (IC)

## Immunogen

A synthesized peptide derived from human PSAP

## Isotype

Rabbit IgG

## Storage Buffer

Supplied in PBS (pH 7.4) containing 50% glycerol, and 0.02% sodium azide.

## Storage

Store at -20 °C for one year.

## Recommended Dilutions

Western Blotting (WB): 1:1,000-1:5,000

Flow Cytometry (FCM): 1:2,000

Immunocytochemistry (IC): 1:100-1:1,000

---

### SUPPORT

SUPPORT@GENUINBIOTECH.COM  
TEL: +1-540-855-7041

### ORDERS

SALES@GENUINBIOTECH.COM  
FAX: +1-540-855-7041

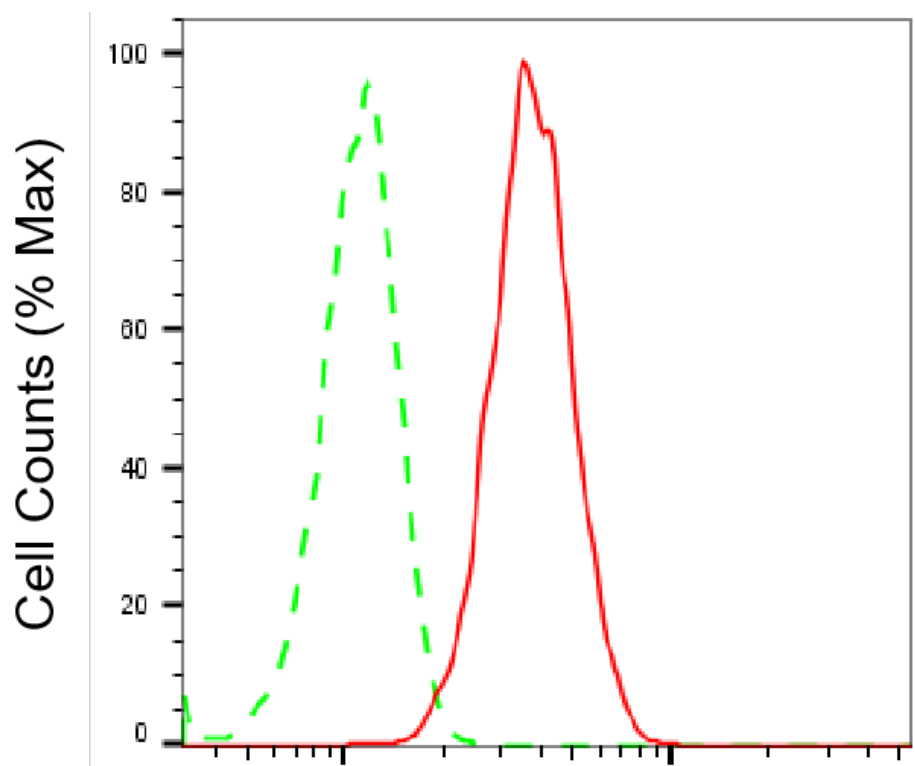
[WWW.GENUINBIOTECH.COM](http://WWW.GENUINBIOTECH.COM)

## KD-Validated Anti-Prosaposin Recombinant Rabbit Monoclonal Antibody

PAGE 2

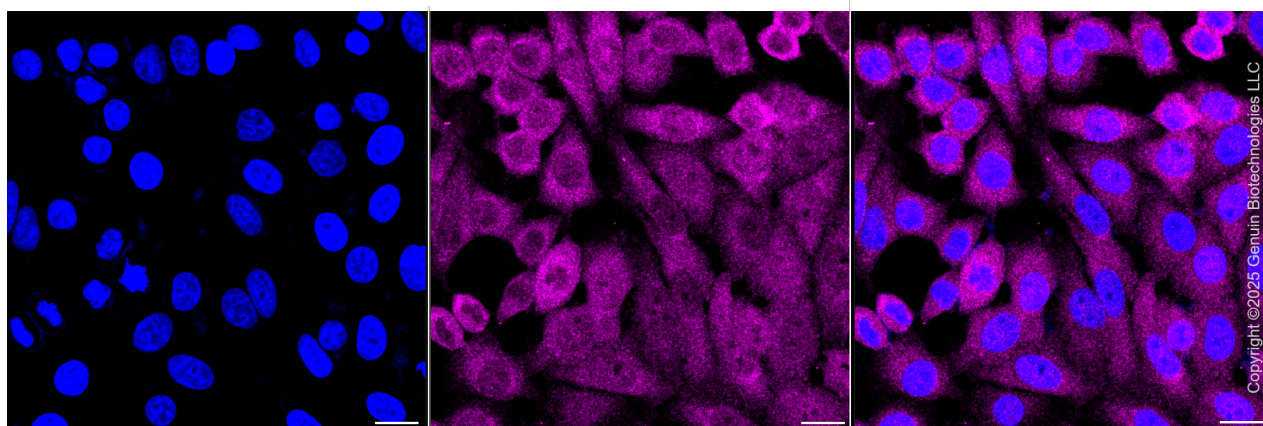
**Note:** This product is for research use only.

### Validation Data



### Prosaposin-Alexa Fluor® 647

Flow cytometric analysis of Prosaposin expression in HepG2 cells using anti-Prosaposin antibody (Cat#61752, 1:2,000). Green, isotype control; red, Prosaposin.



Immunocytochemical staining of HepG2 cells with anti-Prosaposin antibody (Cat#61752, 1:1,000). Nuclei were stained blue with DAPI; Prosaposin was stained magenta with Alexa Fluor® 647. Images were taken using Leica stellaris 5. Protein abundance based on laser Intensity

#### SUPPORT

SUPPORT@GENUINBIOTECH.COM  
TEL: +1-540-855-7041

#### ORDERS

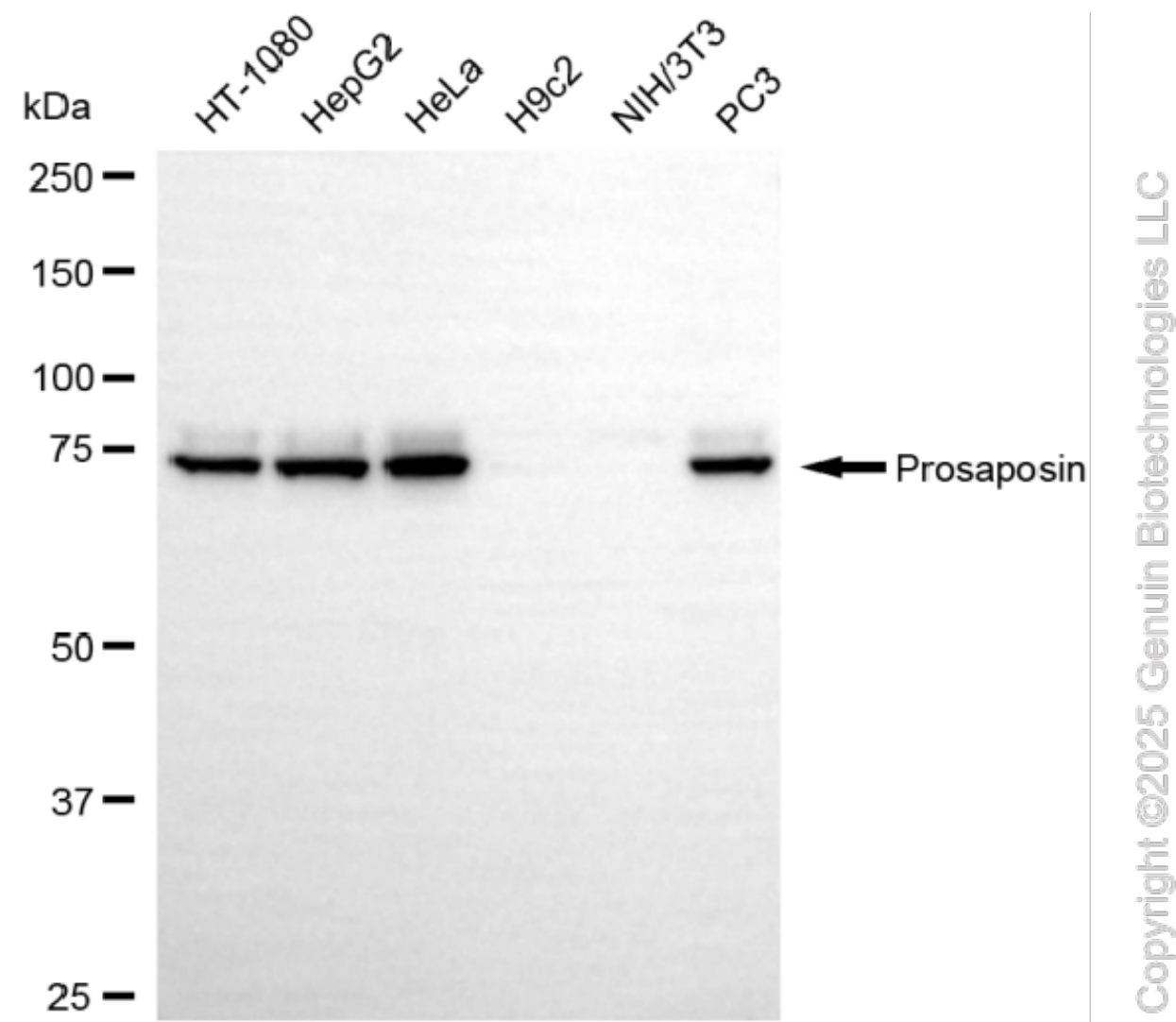
SALES@GENUINBIOTECH.COM  
FAX: +1-540-855-7041

[WWW.GENUINBIOTECH.COM](http://WWW.GENUINBIOTECH.COM)

## KD-Validated Anti-Prosaposin Recombinant Rabbit Monoclonal Antibody

PAGE 3

and smart gain: Medium. Scale bar, 20  $\mu$ m.



Western blotting analysis using anti-prosaposin antibody (Cat#61752). Total cell lysates (30  $\mu$ g) from various cell lines were loaded and separated by SDS-PAGE. The blot was incubated with anti-prosaposin antibody (Cat#61752, 1:5,000) and HRP-conjugated goat anti-rabbit secondary antibody (Cat#201, 1:20,000) respectively. Image was developed using NaQ™ ECL Substrate Kit (Cat#716).

### SUPPORT

SUPPORT@GENUINBIOTECH.COM  
TEL: +1-540-855-7041

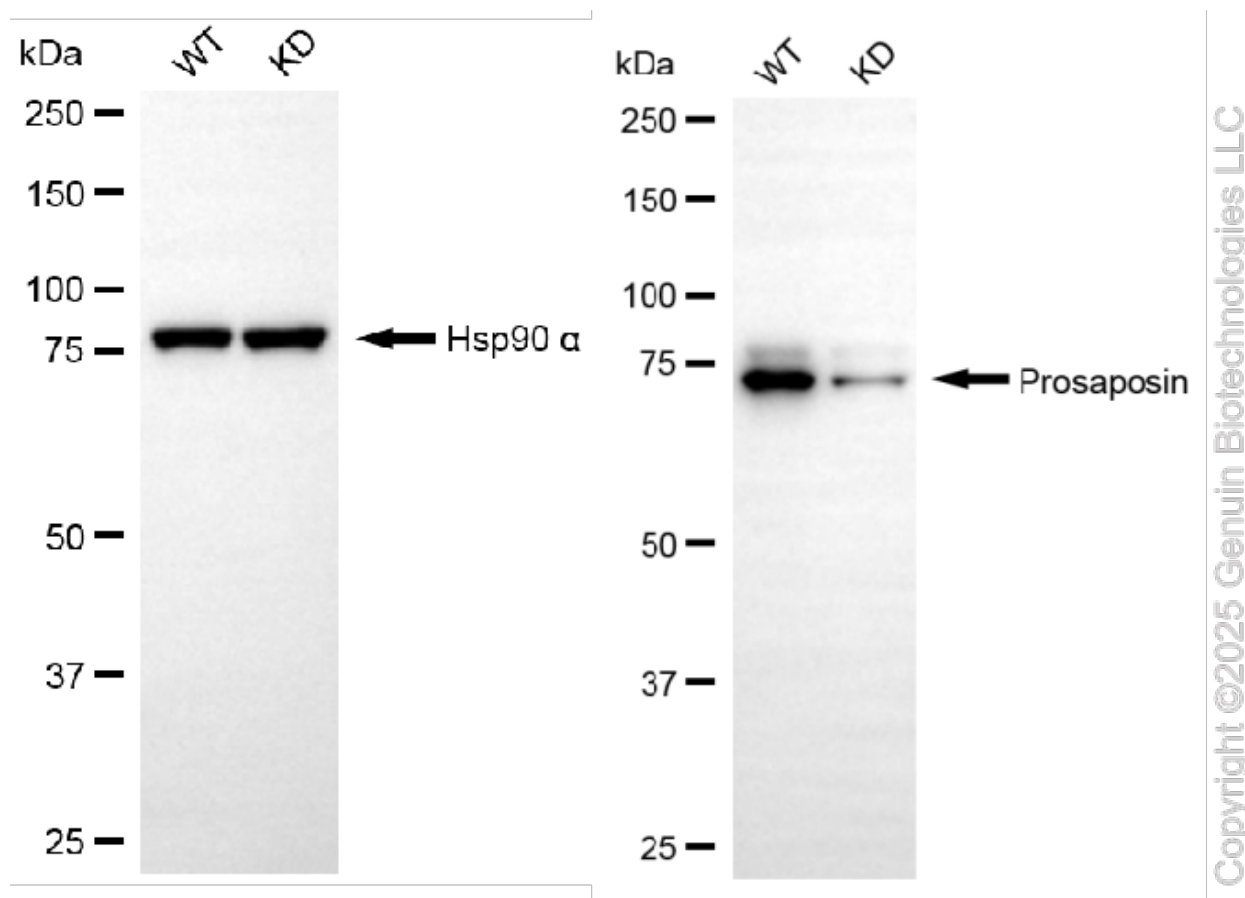
### ORDERS

SALES@GENUINBIOTECH.COM  
FAX: +1-540-855-7041

WWW.GENUINBIOTECH.COM

## KD-Validated Anti-Prosaposin Recombinant Rabbit Monoclonal Antibody

PAGE 4



Western blotting analysis using anti-prosaposin antibody (Cat#61752). Prosaposin expression in wild-type (WT) and prosaposin (PSAP) knockdown (KD) HeLa cells with 20 µg of total cell lysates. Hsp90 α serves as a loading control. The blot was incubated with anti-prosaposin antibody (Cat#61752, 1:5,000) and HRP-conjugated goat anti-rabbit secondary antibody (Cat#201, 1:20,000) respectively. Image was developed using FeQ™ ECL Substrate Kit (Cat#226).

### SUPPORT

SUPPORT@GENUINBIOTECH.COM  
TEL: +1-540-855-7041

### ORDERS

SALES@GENUINBIOTECH.COM  
FAX: +1-540-855-7041

[WWW.GENUINBIOTECH.COM](http://WWW.GENUINBIOTECH.COM)