

# KD-Validated Anti-RAD52 Recombinant Rabbit Monoclonal Antibody



**Catalog #: 61753**

## Aliases

RAD52; RAD52 Homolog, DNA Repair Protein; DNA Repair Protein RAD52 Homolog; Rhabdomyosarcoma Antigen MU-RMS-40.23; RAD52 (S. Cerevisiae) Homolog; RAD52 Homolog (S. Cerevisiae); Recombination Protein RAD52

## Background

Gene Name: RAD52

NCBI Gene Entry: [5893](#)

UniProt Entry: [P43351](#)

## Application Information

Molecular Weight: Predicted, 46 kDa; observed, 48 kDa

Clonality: Rabbit monoclonal antibody

Clone ID: 25GB3575

Species Reactivity: Human

Applications Tested: Western blotting (WB), immunocytochemistry (IC)

## Immunogen

A synthesized peptide derived from human RAD52

## Isotype

Rabbit IgG

## Storage Buffer

Supplied in PBS (pH 7.4) containing 50% glycerol, and 0.02% sodium azide.

## Storage

Store at -20 °C for one year.

## Recommended Dilutions

Western blotting (WB): 1:1,000-1:5,000

Immunocytochemistry (IC): 1:100-1:1,000

**Note:** This product is for research use only.

## Validation Data

---

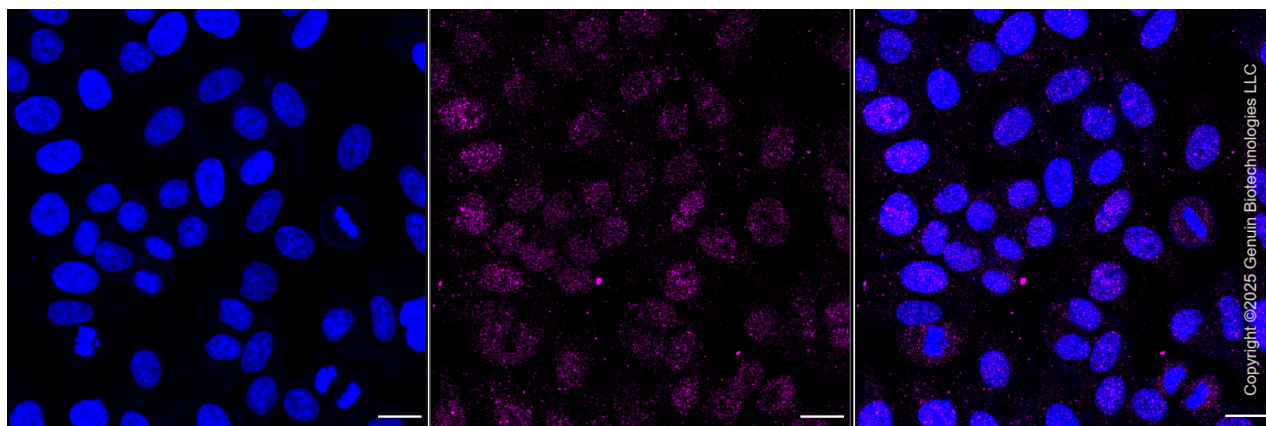
### SUPPORT

SUPPORT@GENUINBIOTECH.COM  
TEL: +1-540-855-7041

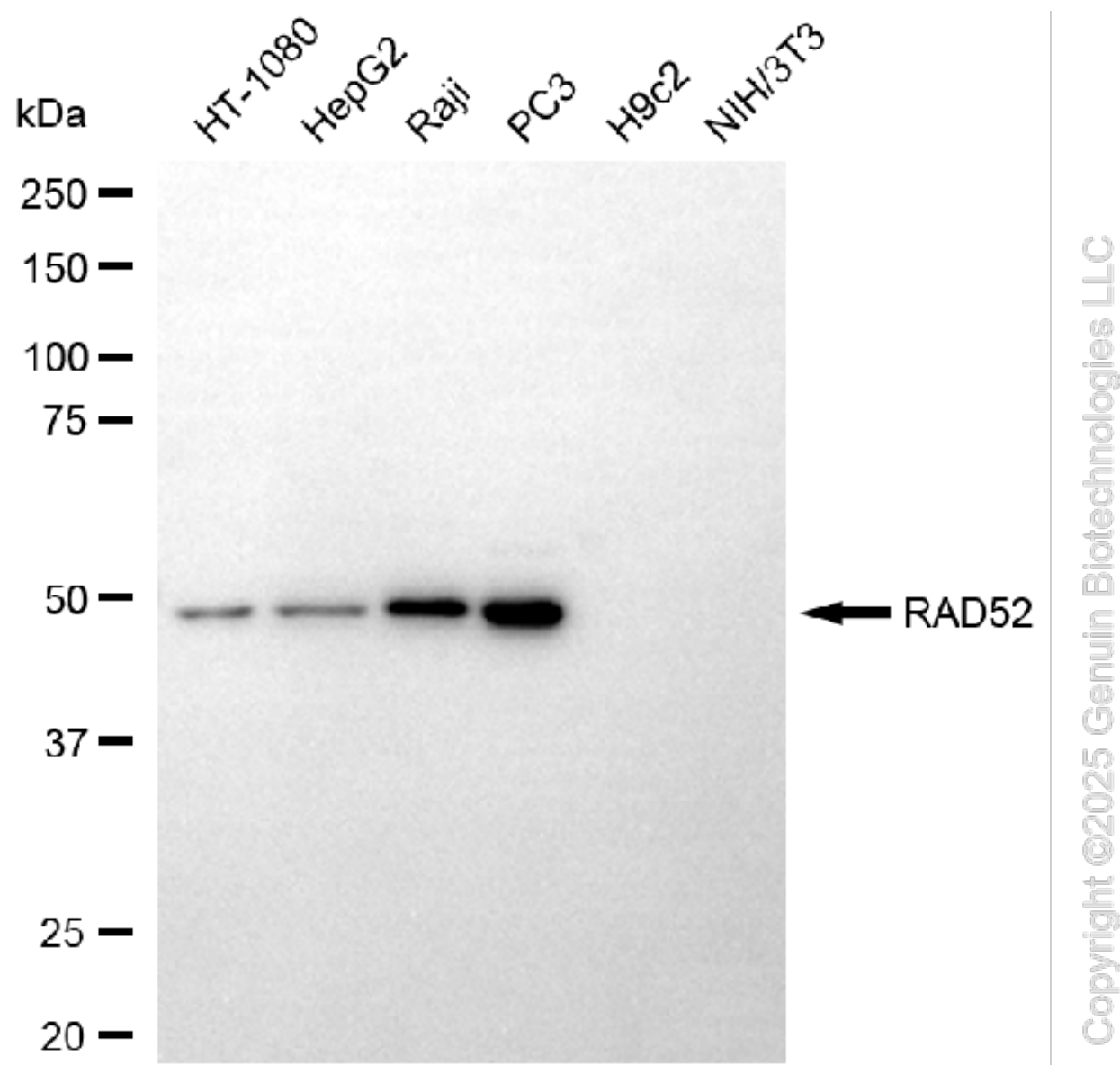
### ORDERS

SALES@GENUINBIOTECH.COM  
FAX: +1-540-855-7041

[WWW.GENUINBIOTECH.COM](http://WWW.GENUINBIOTECH.COM)



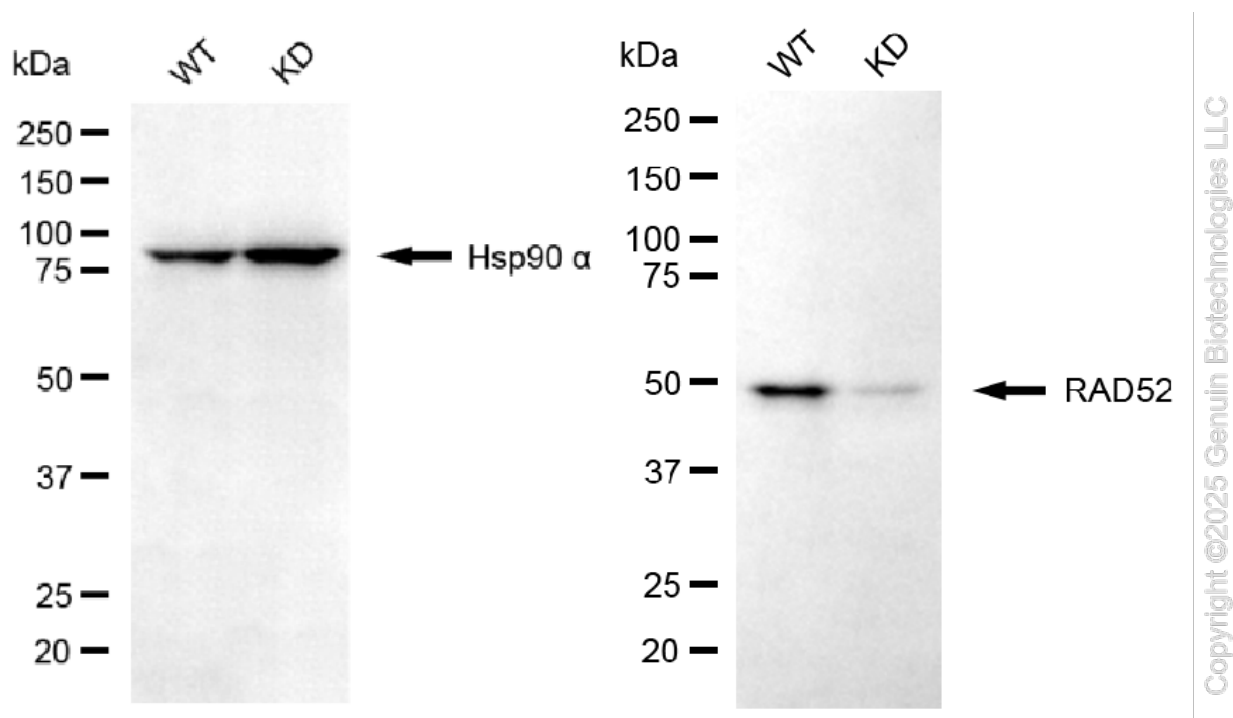
Immunocytochemical staining of RAD52 cells with RAD52 antibody (Cat#61753, 1:1,000). Nuclei were stained blue with DAPI; RAD52 was stained magenta with Alexa Fluor® 647. Images were taken using Leica stellaris 5. Protein abundance based on laser Intensity and smart gain: Low. Scale bar, 20  $\mu$ m.



Western blotting analysis using anti-RAD52 antibody (Cat#61753). Total cell lysates (30  $\mu$ g) from various cell lines were loaded and separated by SDS-PAGE. The blot was incubated with anti-RAD52 antibody (Cat#61753, 1:5,000) and HRP-conjugated goat anti-rabbit secondary antibody (Cat#201, 1:20,000) respectively. Image was developed using FeQ™ ECL Substrate Kit (Cat#226).

## KD-Validated Anti-RAD52 Recombinant Rabbit Monoclonal Antibody

PAGE 4



Western blotting analysis using anti-RAD52 antibody (Cat#61753). RAD52 expression in wild type (WT) and RAD52 knockdown (KD) HeLa cells with 20 µg of total cell lysates. Hsp90 α serves as a loading control. The blot was incubated with anti-RAD52 antibody (Cat#61753, 1:5,000) and HRP-conjugated goat anti-rabbit secondary antibody (Cat#201, 1:20,000) respectively. Image was developed using FeQ™ ECL Substrate Kit (Cat#226).

### SUPPORT

SUPPORT@GENUINBIOTECH.COM  
TEL: +1-540-855-7041

### ORDERS

SALES@GENUINBIOTECH.COM  
FAX: +1-540-855-7041

[WWW.GENUINBIOTECH.COM](http://WWW.GENUINBIOTECH.COM)