

KD-Validated Anti-Zyxin Recombinant Rabbit Monoclonal Antibody



Catalog #: 61755

Aliases

ZYX; Zyxin; Zyxin-2; ESP-2; HED-2

Background

Gene Name: ZYX

NCBI Gene Entry: [7791](#)

UniProt Entry: [Q15942](#)

Application Information

Molecular Weight: Predicted, 61 kDa; observed, 73 kDa

Clonality: Rabbit monoclonal antibody

Clone ID: 25GB3585

Species Reactivity: Human, mouse, rat

Applications Tested: Western blotting (WB), flow cytometry (FCM), immunocytochemistry (IC)

Immunogen

A synthesized peptide derived from human Zyxin

Isotype

Rabbit IgG

Storage Buffer

Supplied in PBS (pH 7.4) containing 50% glycerol, and 0.02% sodium azide.

Storage

Store at -20 °C for one year.

Recommended Dilutions

Western blotting (WB): 1:1,000-1:5,000

Flow Cytometry (FCM): 1:2,000

Immunocytochemistry (IC): 1:100-1:1,000

Note: This product is for research use only.

Validation Data

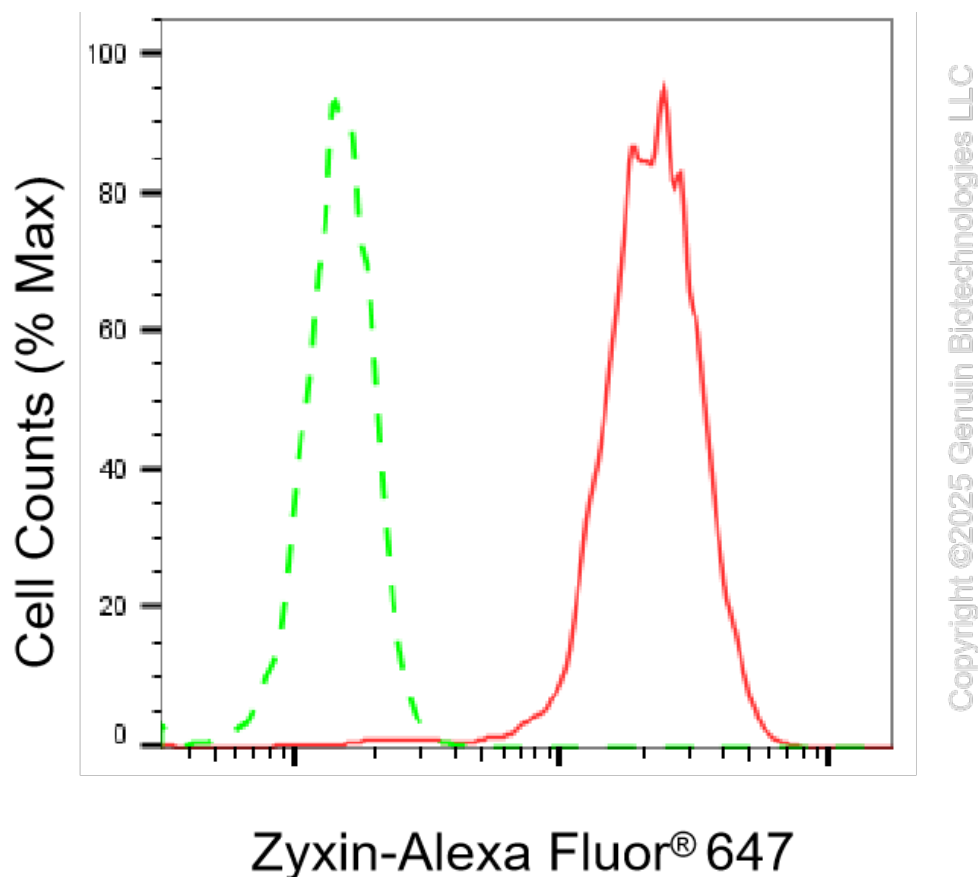
SUPPORT

SUPPORT@GENUINBIOTECH.COM
TEL: +1-540-855-7041

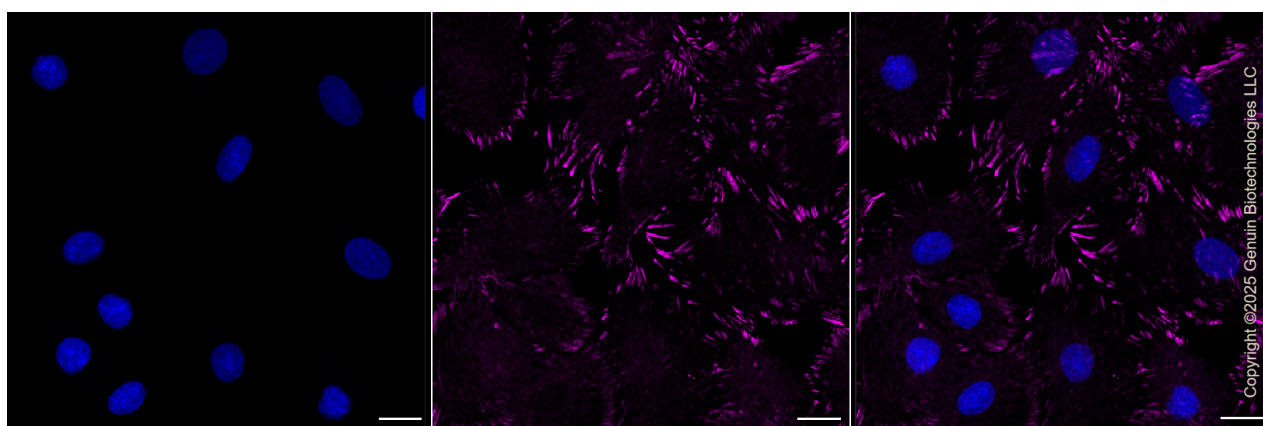
ORDERS

SALES@GENUINBIOTECH.COM
FAX: +1-540-855-7041

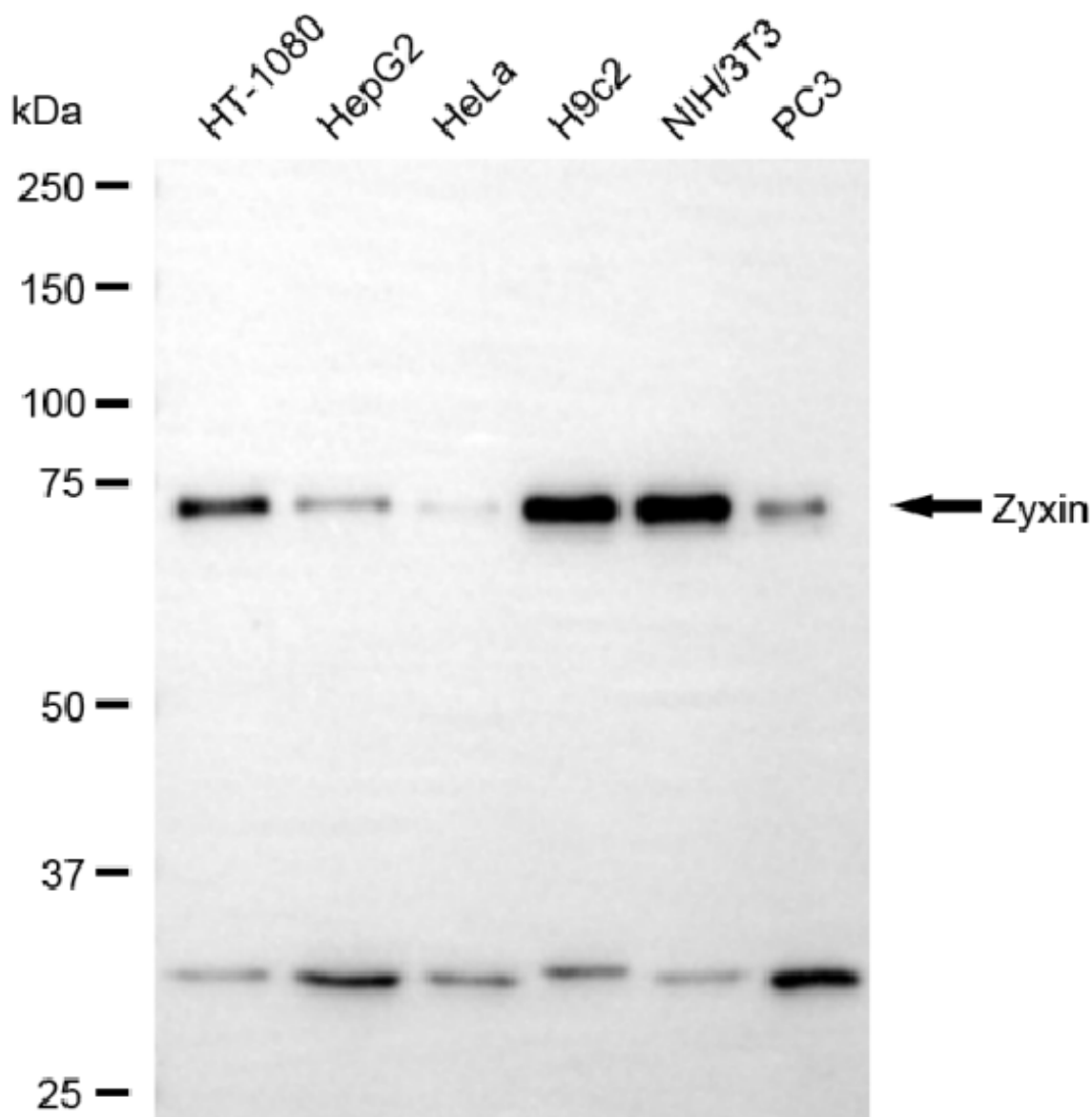
WWW.GENUINBIOTECH.COM



Flow cytometric analysis of zyxin expression in H9c2 cells using anti-zyxin antibody (Cat#61755, 1:2,000). Green, isotype control; red, zyxin.



Immunocytochemical staining of H9C2 cells with anti-Zyxin antibody (Cat#61755, 1:1,000). Nuclei were stained blue with DAPI; Zyxin was stained magenta with Alexa Fluor® 647. Images were taken using Leica stellaris 5. Protein abundance based on laser Intensity and smart gain: Medium. Scale bar, 20 µm.

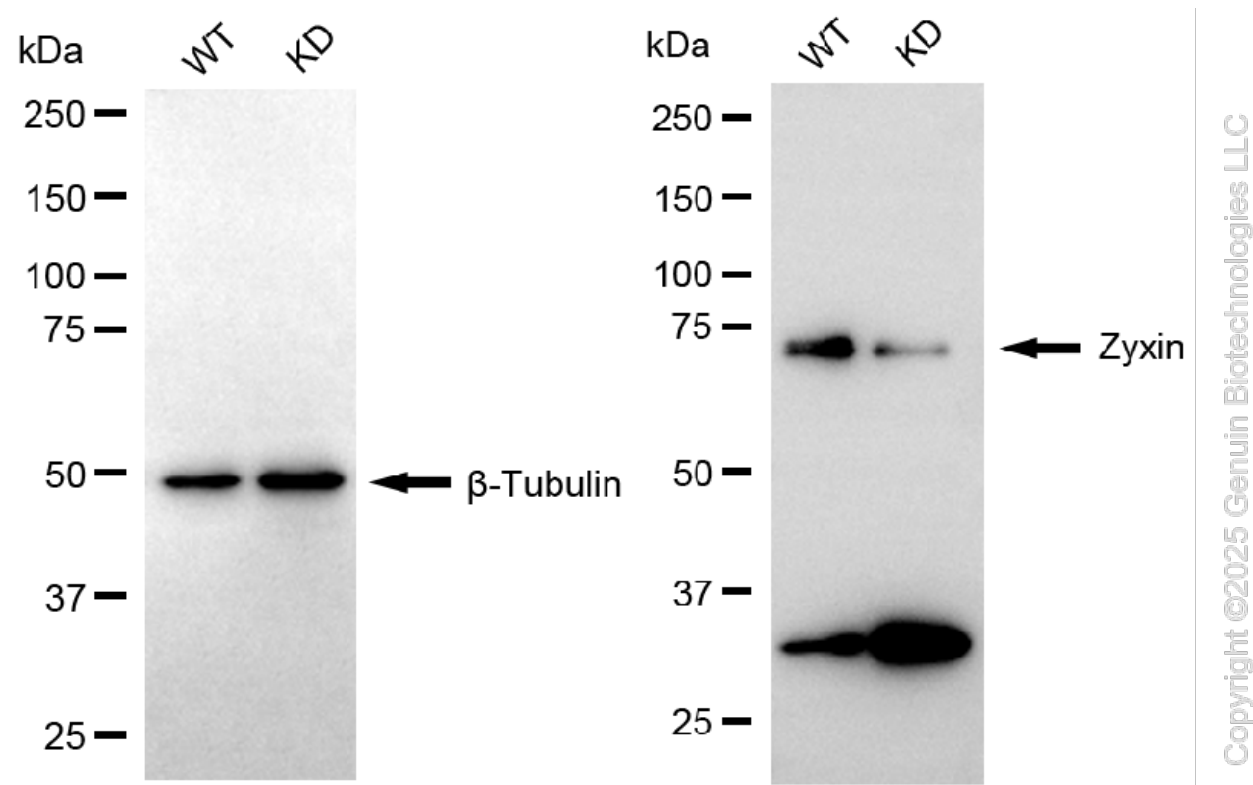


Copyright ©2025 Genuin Biotechnologies LLC

Western blotting analysis using anti-zyxin antibody (Cat#61755). Total cell lysates (30 μ g) from various cell lines were loaded and separated by SDS-PAGE. The blot was incubated with anti-zyxin antibody (Cat#61755, 1:5,000) and HRP-conjugated goat anti-rabbit secondary antibody (Cat#201, 1:20,000) respectively. Image was developed using NaQ™ ECL Substrate Kit (Cat#716).

KD-Validated Anti-Zyxin Recombinant Rabbit Monoclonal Antibody

PAGE 4



Western blotting analysis using anti-zyxin antibody (Cat#61755). Zyxin expression in wild-type (WT) and zyxin (ZYG) knockdown (KD) HeLa cells with 20 μ g of total cell lysates. β -Tubulin serves as a loading control. The blot was incubated with anti-zyxin antibody (Cat#61755, 1:5,000) and HRP-conjugated goat anti-rabbit secondary antibody (Cat#201, 1:20,000) respectively. Image was developed using NaQ™ ECL Substrate Kit (Cat#716).

SUPPORT

SUPPORT@GENUINBIOTECH.COM
TEL: +1-540-855-7041

ORDERS

SALES@GENUINBIOTECH.COM
FAX: +1-540-855-7041

WWW.GENUINBIOTECH.COM