

KD-Validated Anti-Transportin 3 Recombinant Rabbit Monoclonal Antibody



Catalog #: 61756

Aliases

TNPO3; Transportin 3; TRN-SR; IPO12; TRN-SR2; MTR10A; Limb Girdle Muscular Dystrophy 1F (Autosomal Dominant); Transportin-SR; Transportin-3; Importin 12; LGMD1F; Imp12; Importin-12; LGMDD2; TRNSR

Background

Gene Name: TNPO3

NCBI Gene Entry: [23534](#)

UniProt Entry: [Q9Y5L0](#)

Application Information

Molecular Weight: Predicted, 104 kDa; observed, 90 kDa

Clonality: Rabbit monoclonal antibody

Clone ID: 25GB3590

Species Reactivity: Human, mouse, rat

Applications Tested: Western blotting (WB), flow cytometry (FCM), immunocytochemistry (IC)

Immunogen

A synthesized peptide derived from human TNPO3

Isotype

Rabbit IgG

Storage Buffer

Supplied in PBS (pH 7.4) containing 50% glycerol, and 0.02% sodium azide.

Storage

Store at -20 °C for one year.

Recommended Dilutions

Western Blotting (WB): 1:2,000-1:10,000

Flow Cytometry (FCM): 1:2,000

Immunocytochemistry (IC): 1:100-1:1,000

Note: This product is for research use only.

SUPPORT

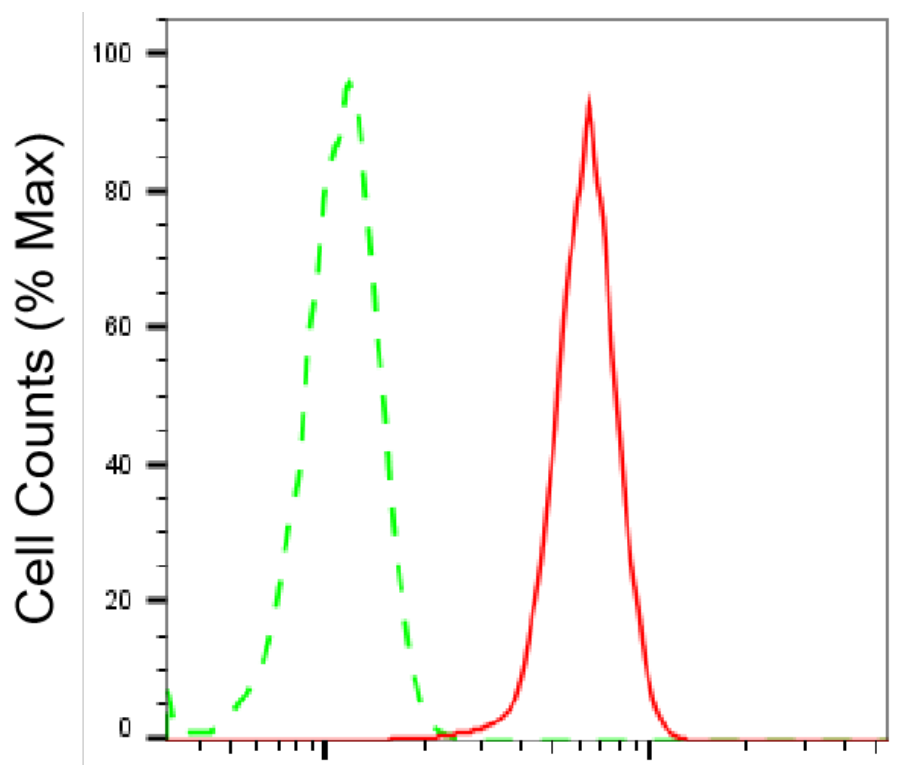
SUPPORT@GENUINBIOTECH.COM
TEL: +1-540-855-7041

ORDERS

SALES@GENUINBIOTECH.COM
FAX: +1-540-855-7041

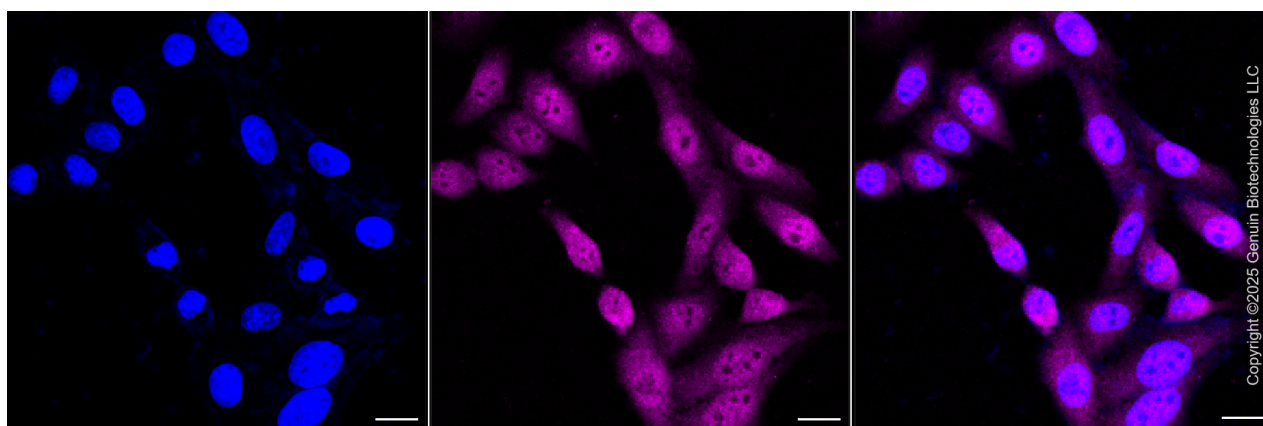
WWW.GENUINBIOTECH.COM

Validation Data



Transportin 3-Alexa Fluor® 647

Flow cytometric analysis of Transportin 3 expression in HepG2 cells using anti-Transportin 3 antibody (Cat#61756, 1:2,000). Green, isotype control; red, Transportin 3.



Immunocytochemical staining of HepG2 cells with anti-Transportin 3 antibody (Cat#61756, 1:1,000). Nuclei were stained blue with DAPI; Transportin 3 was stained magenta with Alexa Fluor® 647. Images were taken using Leica stellaris 5. Protein abundance based on laser Intensity and smart gain: High. Scale bar, 20 μ m.

SUPPORT

SUPPORT@GENUINBIOTECH.COM
TEL: +1-540-855-7041

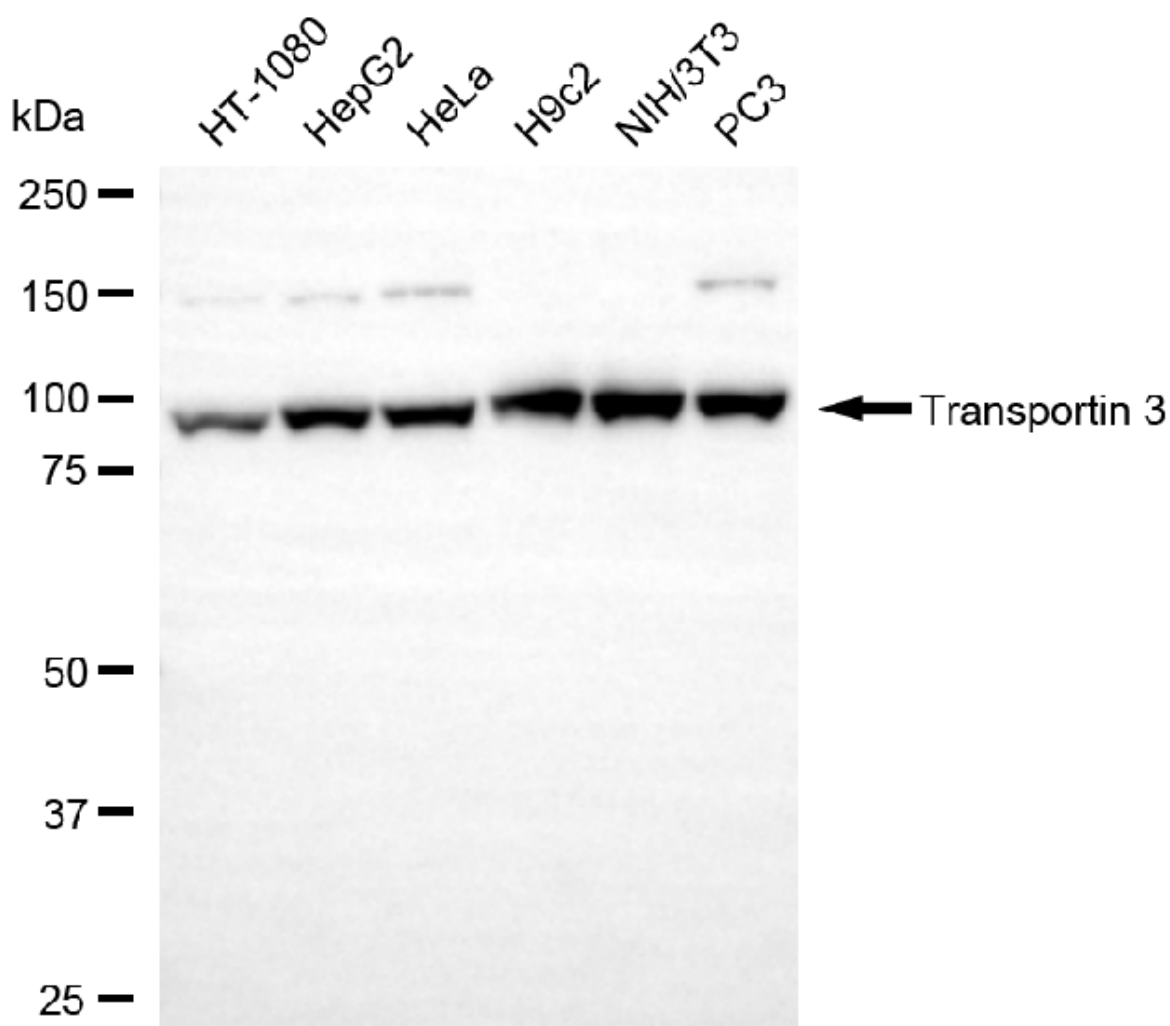
ORDERS

SALES@GENUINBIOTECH.COM
FAX: +1-540-855-7041

WWW.GENUINBIOTECH.COM

KD-Validated Anti-Transportin 3 Recombinant Rabbit Monoclonal Antibody

PAGE 3



Western blotting analysis using anti-transportin 3 antibody (Cat#61756). Total cell lysates (30 µg) from various cell lines were loaded and separated by SDS-PAGE. The blot was incubated with anti-transportin 3 antibody (Cat#61756, 1:10,000) and HRP-conjugated goat anti-rabbit secondary antibody (Cat#201, 1:20,000) respectively. Image was developed using NaQ™ ECL Substrate Kit (Cat#716).

SUPPORT

SUPPORT@GENUINBIOTECH.COM
TEL: +1-540-855-7041

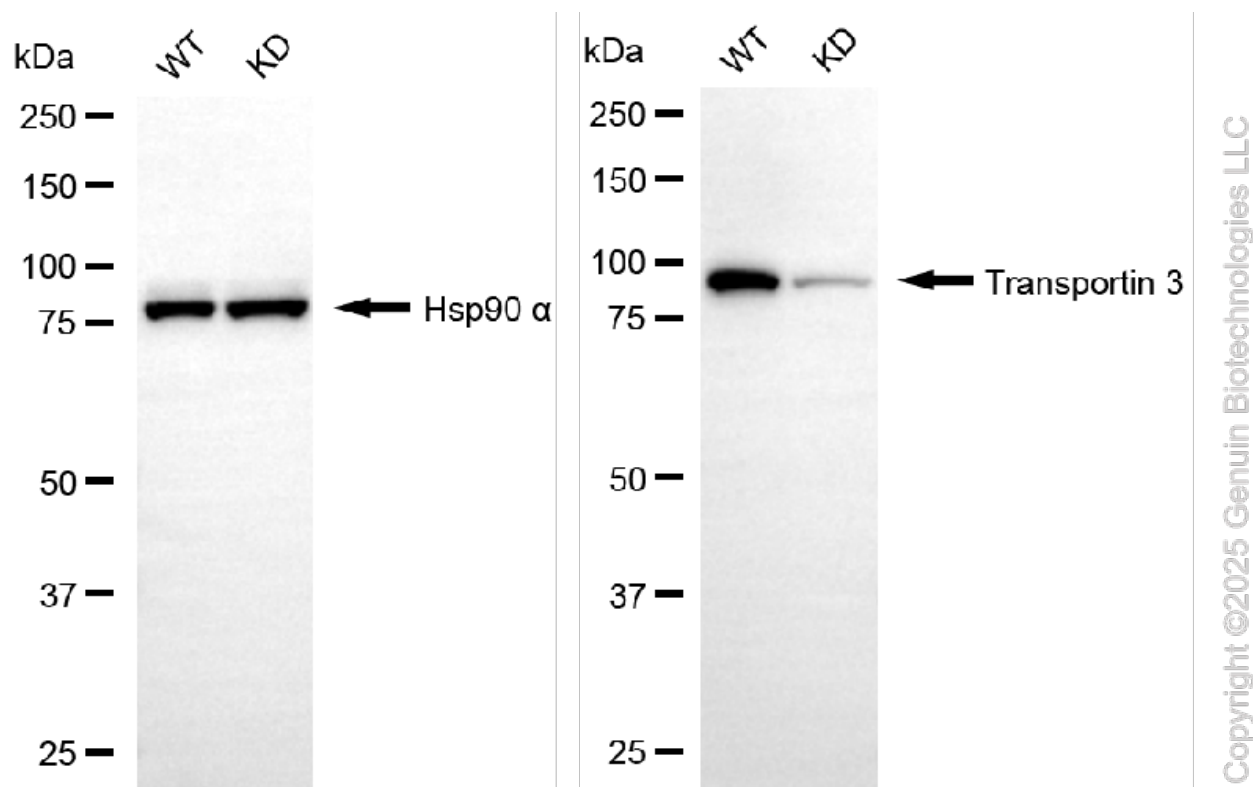
ORDERS

SALES@GENUINBIOTECH.COM
FAX: +1-540-855-7041

WWW.GENUINBIOTECH.COM

KD-Validated Anti-Transportin 3 Recombinant Rabbit Monoclonal Antibody

PAGE 4



Western blotting analysis using anti-transportin 3 antibody (Cat#61756). Transportin 3 expression in wild-type (WT) and transportin 3 (TNPO3) knockdown (KD) HeLa cells with 20 µg of total cell lysates. Hsp90 α serves as a loading control. The blot was incubated with anti-transportin 3 antibody (Cat#61756, 1:5,000) and HRP-conjugated goat anti-rabbit secondary antibody (Cat#201, 1:20,000) respectively. Image was developed using NaQ™ ECL Substrate Kit (Cat#716).

SUPPORT

SUPPORT@GENUINBIOTECH.COM
TEL: +1-540-855-7041

ORDERS

SALES@GENUINBIOTECH.COM
FAX: +1-540-855-7041

WWW.GENUINBIOTECH.COM