

KD-Validated Anti-CREB1 Rabbit Monoclonal Antibody



Catalog #: 61764

Aliases

CAMP Responsive Element Binding Protein 1; Cyclic AMP-Responsive Element-Binding Protein 1; CREB-1; Cyclic Adenosine 3',5'-Monophosphate Response Element-Binding Protein CREB; Cyclic Adenosine 3',5'-Monophosphate Response Element Binding Protein; CAMP-Responsive Element-Binding Protein 1; CAMP-Response Element-Binding Protein-1; Active Transcription Factor CREB; Transactivator Protein; CREB

Background

Gene Name: CREB1

NCBI Gene Entry: [1385](#)

UniProt Entry: [P16220](#)

Application Information

Molecular Weight: Predicted, 35 kDa, observed, 43-46 kDa

Clonality: Rabbit monoclonal antibody

Clone ID: 25GB3650

Species Reactivity: Human, mouse, rat

Applications Tested: Western blotting (WB), flow cytometry (FCM), immunocytochemistry (IC)

Immunogen

A synthesized peptide derived from human CREB

Isotype

Rabbit IgG

Storage Buffer

Supplied in PBS (pH 7.4) containing 50% glycerol, and 0.02% sodium azide.

Storage

Store at -20 °C for one year.

Recommended Dilutions

Western blotting (WB): 1:1,000-1:5,000

Flow Cytometry (FCM): 1:2,000

Immunocytochemistry (IC): 1:100-1:1,000

SUPPORT

SUPPORT@GENUINBIOTECH.COM
TEL: +1-540-855-7041

ORDERS

SALES@GENUINBIOTECH.COM
FAX: +1-540-855-7041

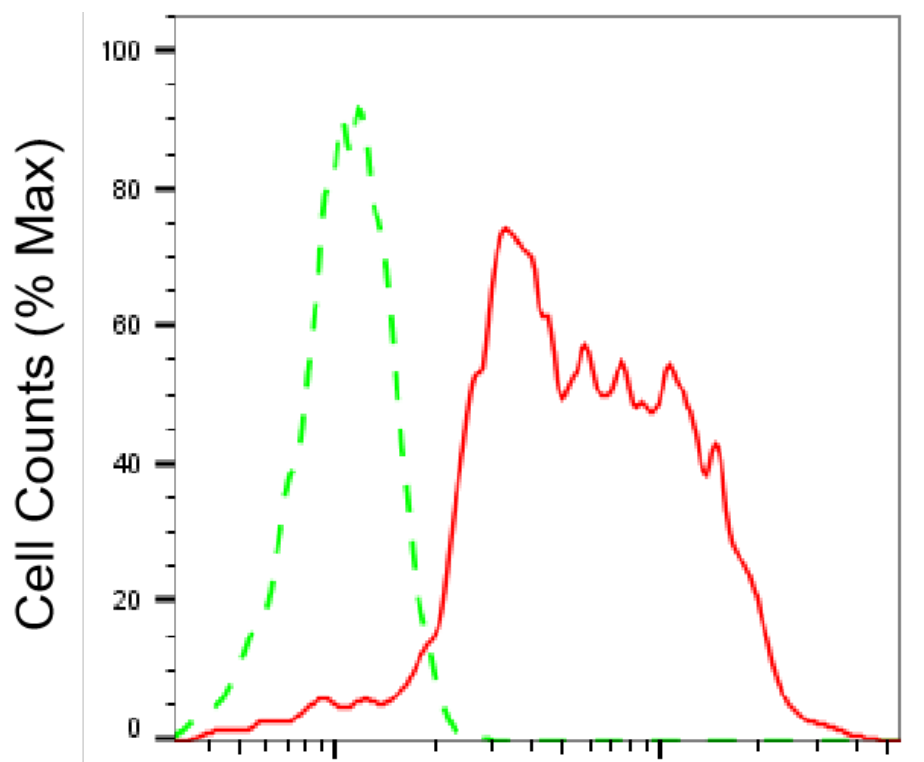
WWW.GENUINBIOTECH.COM

KD-Validated Anti-CREB1 Rabbit Monoclonal Antibody

PAGE 2

Note: This product is for research use only.

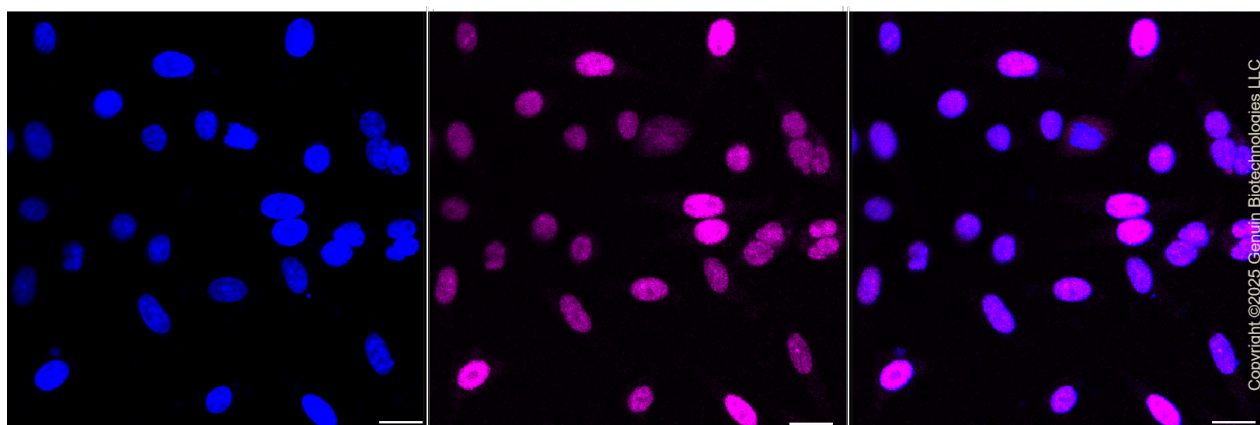
Validation Data



Copyright ©2025 Genuin Biotechnologies LLC

CREB1-Alexa Fluor® 647

Flow cytometric analysis of CREB1 expression in HepG2 cells using anti-CREB1 antibody (Cat#61764, 1:2,000). Green, isotype control; red, CREB1.



Copyright ©2025 Genuin Biotechnologies LLC

Immunocytochemical staining of HepG2 cells with anti-CREB1 antibody (Cat#61764, 1:1,000). Nuclei were stained blue with DAPI; CREB1 was stained magenta with Alexa Fluor® 647. Images were taken using Leica stellaris 5. Protein abundance based on laser Intensity and smart

SUPPORT

SUPPORT@GENUINBIOTECH.COM
TEL: +1-540-855-7041

ORDERS

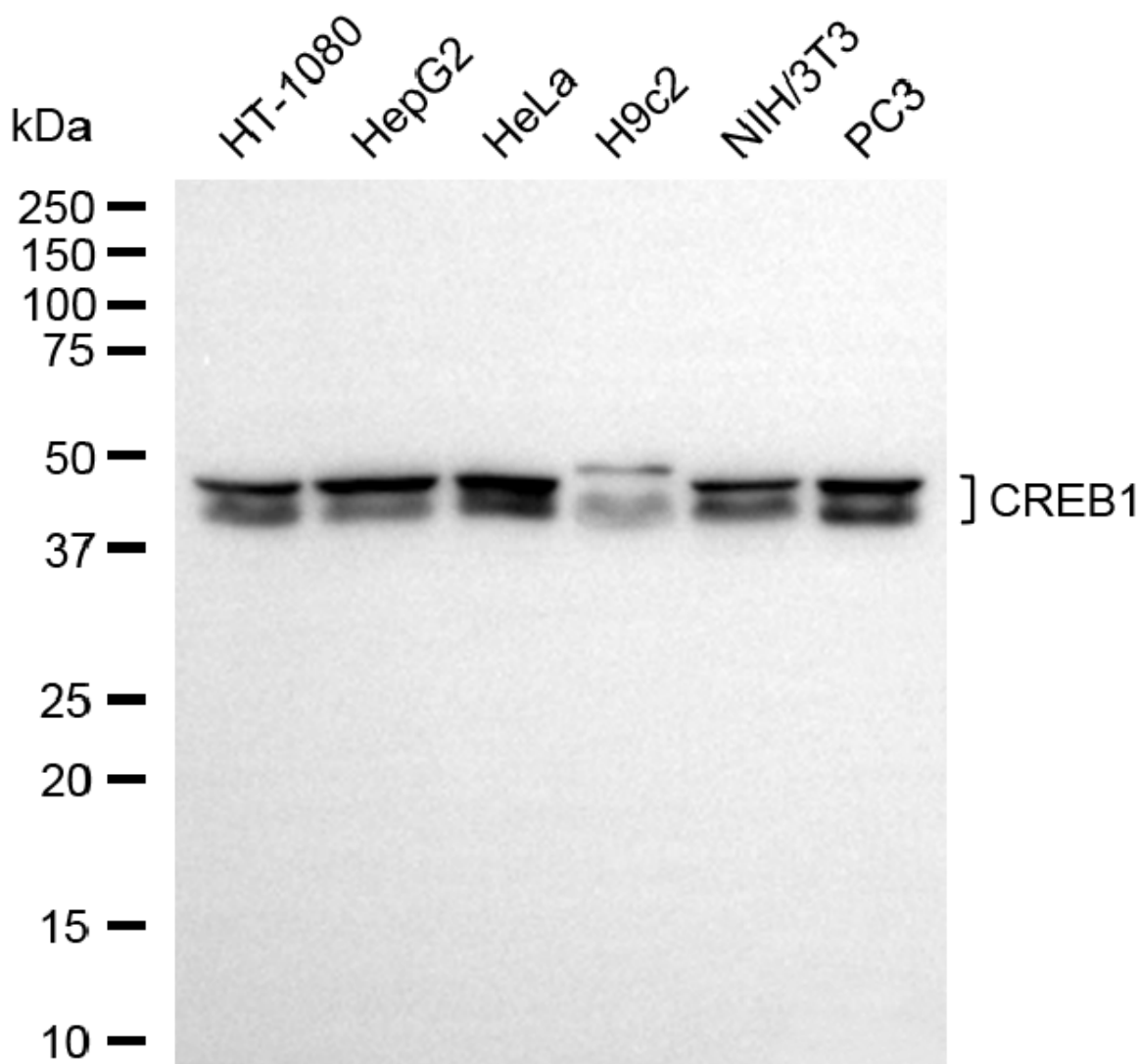
SALES@GENUINBIOTECH.COM
FAX: +1-540-855-7041

WWW.GENUINBIOTECH.COM

KD-Validated Anti-CREB1 Rabbit Monoclonal Antibody

PAGE 3

gain: Low. Scale bar, 20 μ m.



Copyright ©2025 Genuin Biotechnologies LLC

Western blotting analysis using anti-CREB1 antibody (Cat#61764). Total cell lysates (30 μ g) from various cell lines were loaded and separated by SDS-PAGE. The blot was incubated with anti-CREB1 antibody (Cat#61764, 1:5,000) and HRP-conjugated goat anti-rabbit secondary antibody (Cat#201, 1:20,000) respectively. Image was developed using NaQ™ ECL Substrate Kit (Cat#716).

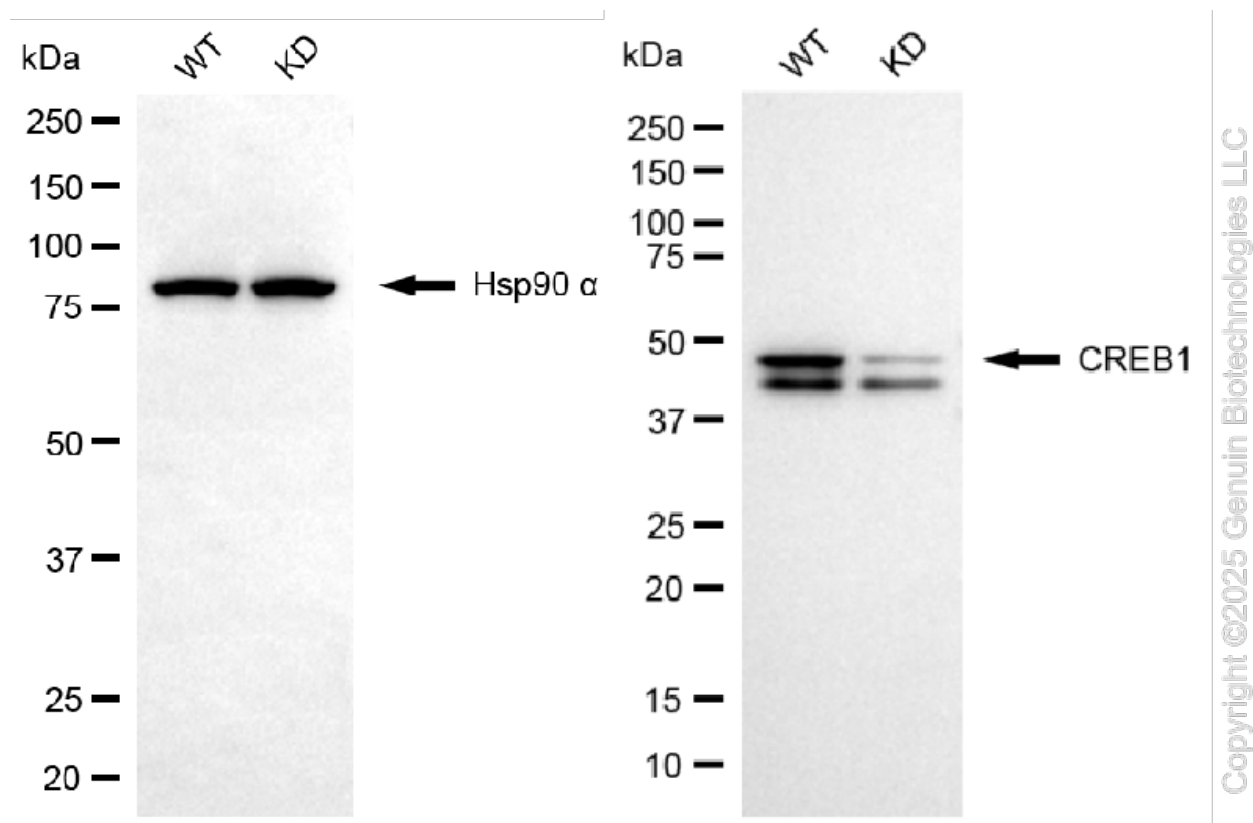
SUPPORT

SUPPORT@GENUINBIOTECH.COM
TEL: +1-540-855-7041

ORDERS

SALES@GENUINBIOTECH.COM
FAX: +1-540-855-7041

WWW.GENUINBIOTECH.COM



Western blotting analysis using anti-CREB1 antibody (Cat#61764). CREB1 expression in wild type (WT) and CREB1 knockdown (KD) HSHC cells with 20 µg of total cell lysates. Hsp90 α serves as a loading control. The blot was incubated with anti-CREB1 antibody (Cat#61764, 1:5,000) and HRP-conjugated goat anti-rabbit secondary antibody (Cat#201, 1:20,000) respectively. Image was developed using NaQ™ ECL Substrate Kit (Cat#716).