

# KD-Validated Anti-Caspase 2 Recombinant Rabbit Monoclonal Antibody



**Catalog #: 61766**

## Aliases

CASP2; Caspase 2; ICH1; PPP1R57; NEDD2; Neural Precursor Cell Expressed Developmentally Down-Regulated Protein; Protein Phosphatase 1, Regulatory Subunit 57; Protease ICH-1; EC 3.4.22.55; Caspase-2; MGC2181; CASP-2; NEDD-2; Neural Precursor Cell Expressed, Developmentally Down-Regulated 2; Caspase 2, Apoptosis-Related Cysteine Peptidase; Caspase 2 Apoptosis-Related Cysteine Peptidase

## Background

Gene Name: CASP2

NCBI Gene Entry: [835](#)

UniProt Entry: [P42575](#)

## Application Information

Molecular Weight: Predicted, 51 kDa, observed, 48 kDa

Clonality: Rabbit monoclonal antibody

Clone ID: 23GB4375

Species Reactivity: Human, mouse, rat

Applications Tested: Western blotting (WB), flow cytometry (FCM), immunocytochemistry (IC)

## Immunogen

A synthesized peptide derived from human Caspase-2

## Isotype

Rabbit IgG

## Storage Buffer

Supplied in PBS (pH 7.4) containing 50% glycerol, and 0.02% sodium azide.

## Storage

Store at -20 °C for one year.

## Recommended Dilutions

Western Blotting (WB): 1:1,000-1:5,000

Flow Cytometry (FCM): 1:2,000

Immunocytochemistry (IC): 1:100-1:1,000

---

### SUPPORT

SUPPORT@GENUINBIOTECH.COM  
TEL: +1-540-855-7041

### ORDERS

SALES@GENUINBIOTECH.COM  
FAX: +1-540-855-7041

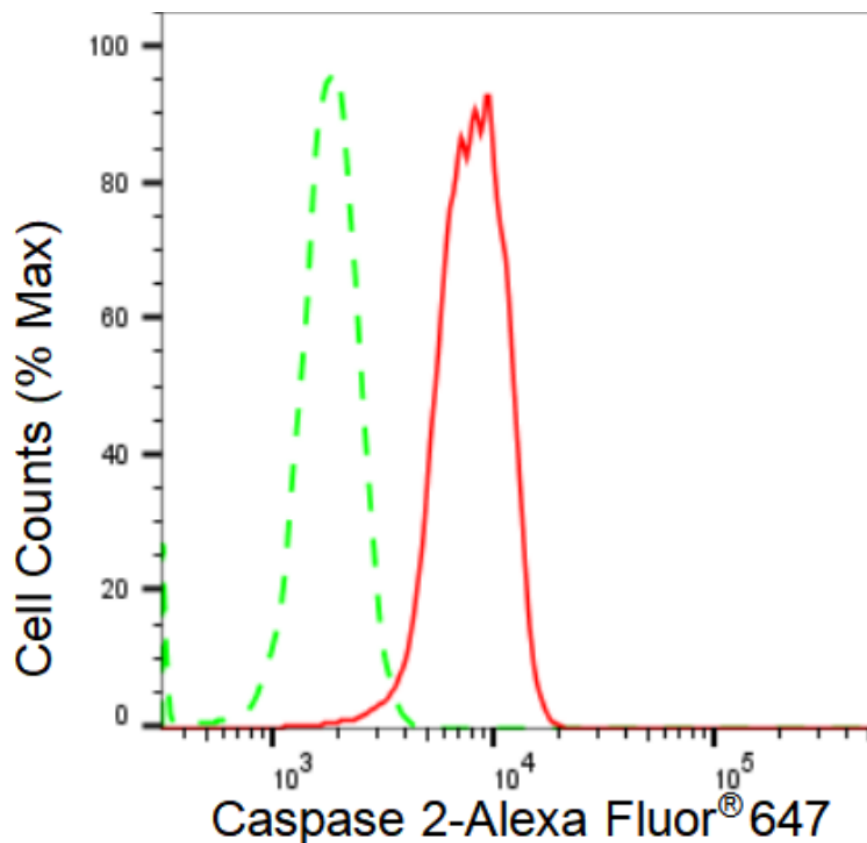
[WWW.GENUINBIOTECH.COM](http://WWW.GENUINBIOTECH.COM)

# KD-Validated Anti-Caspase 2 Recombinant Rabbit Monoclonal Antibody

PAGE 2

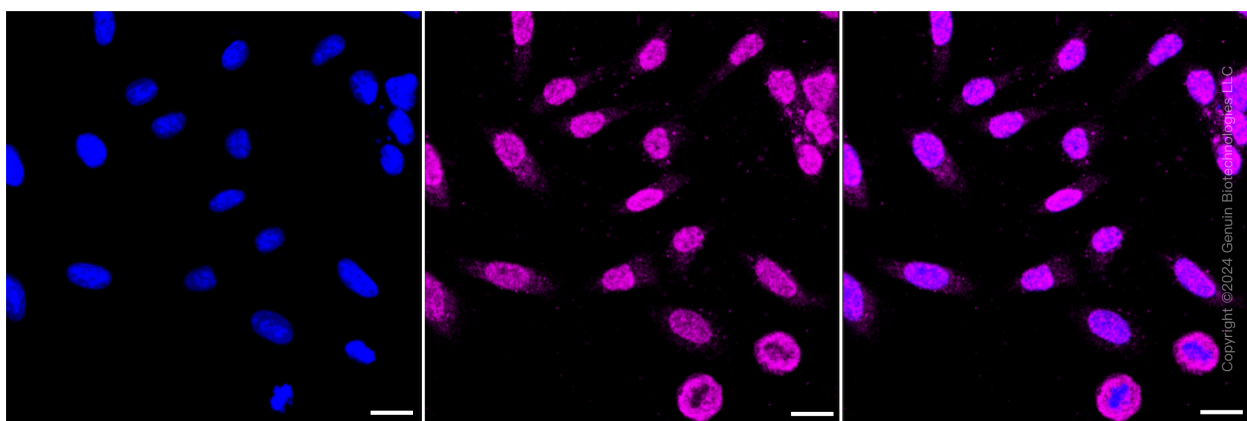
**Note:** This product is for research use only.

## Validation Data



Copyright ©2024 Genuin Biotechnologies LLC

Flow cytometric analysis of Caspase 2 expression in HepG2 cells using Caspase 2 antibody (Cat#61766, 1:2,000). Green, isotype control; red, Caspase 2.



Copyright ©2024 Genuin Biotechnologies LLC

Immunocytochemical staining of HepG2 cells with Caspase 2 antibody (Cat#61766, 1:1,000). Nuclei were stained blue with DAPI; Caspase 2 was stained magenta with Alexa Fluor® 647. Images were taken using Leica stellaris 5. Protein abundance based on laser Intensity and smart gain: Low. Scale bar: 20 µm.

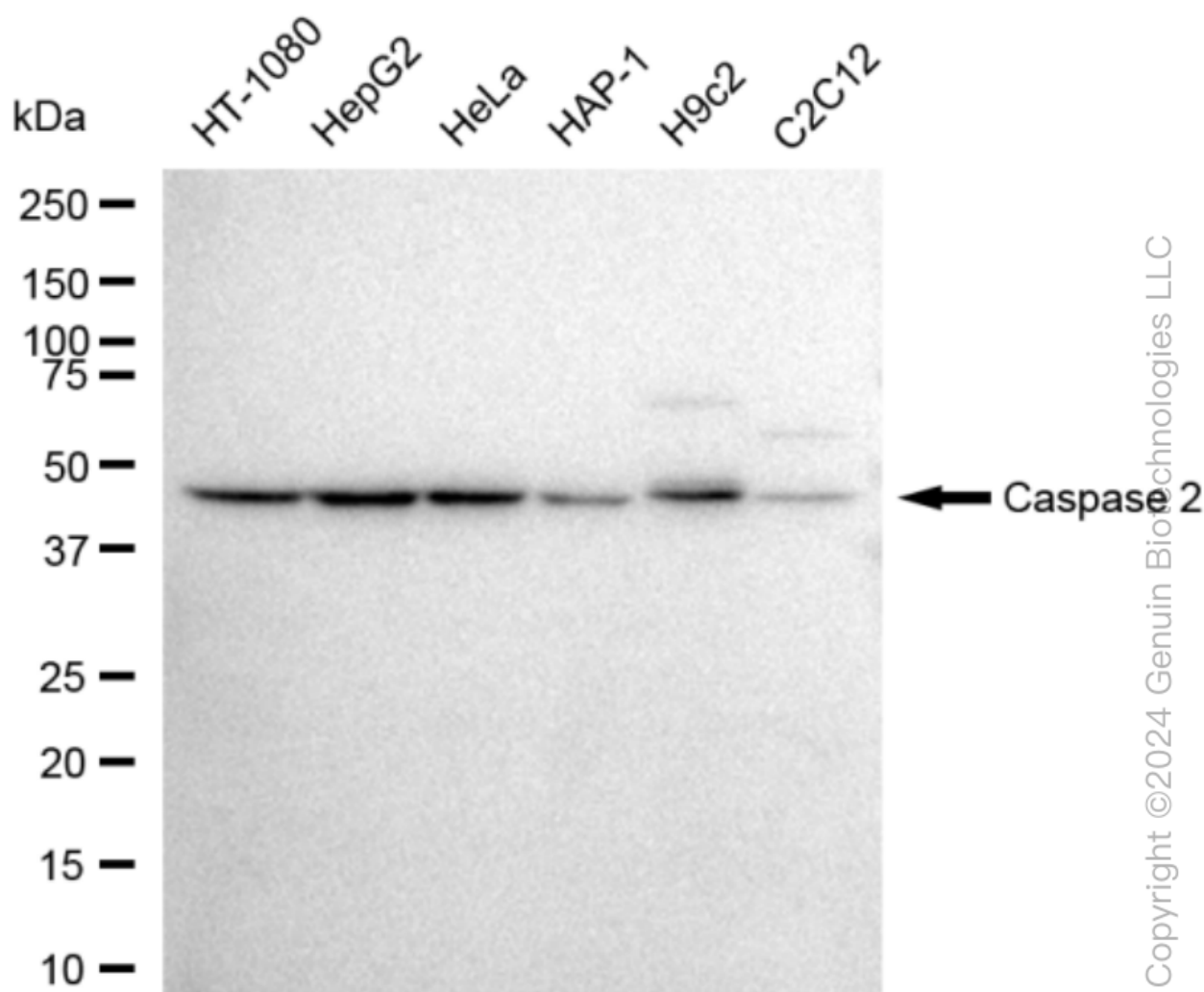
### SUPPORT

SUPPORT@GENUINBIOTECH.COM  
TEL: +1-540-855-7041

### ORDERS

SALES@GENUINBIOTECH.COM  
FAX: +1-540-855-7041

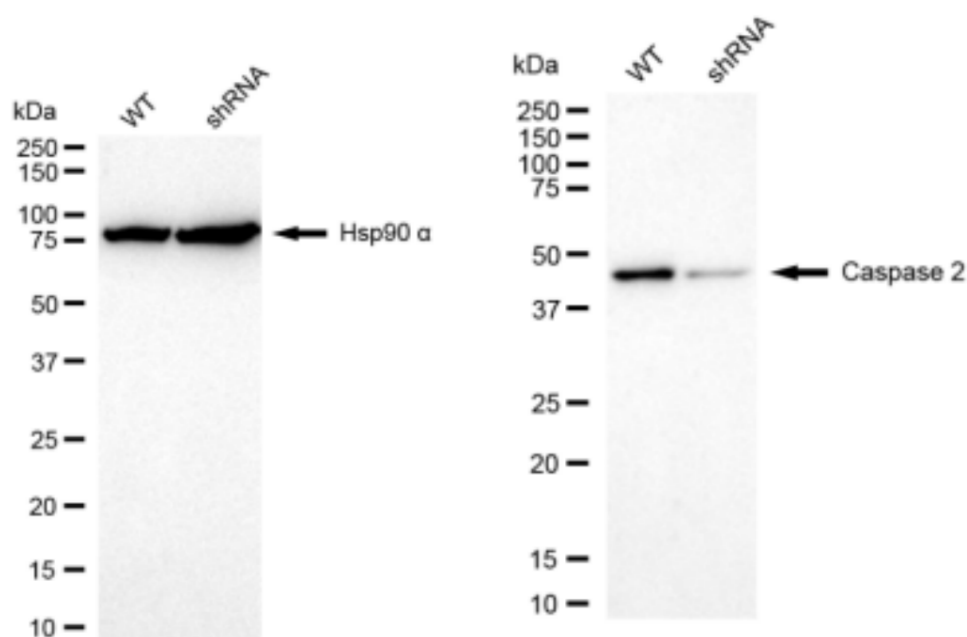
WWW.GENUINBIOTECH.COM



Western blotting analysis using anti-Caspase 2 antibody (Cat#61766). Total cell lysates (30 µg) from various cell lines were loaded and separated by SDS-PAGE. The blot was incubated with anti-Caspase 2 antibody (Cat#61766, 1:5,000) and HRP-conjugated goat anti-rabbit secondary antibody (Cat#201, 1:20,000) respectively. Image was developed using FeQ™ ECL Substrate Kit (Cat#226).

## KD-Validated Anti-Caspase 2 Recombinant Rabbit Monoclonal Antibody

PAGE 4



Copyright ©2024 Genuin Biotechnologies LLC

Western blotting analysis using anti-Caspase 2 antibody (Cat#61766). Caspase 2 expression in wild type (WT) and Caspase 2 shRNA knockdown (KD) HeLa cells with 30 µg of total cell lysates. Hsp90 α serves as a loading control. The blot was incubated with anti-Caspase 2 antibody (Cat#61766, 1:5,000) and HRP-conjugated goat anti-rabbit secondary antibody (Cat#201, 1:20,000) respectively. Image was developed using FeQ™ ECL Substrate Kit (Cat#226).

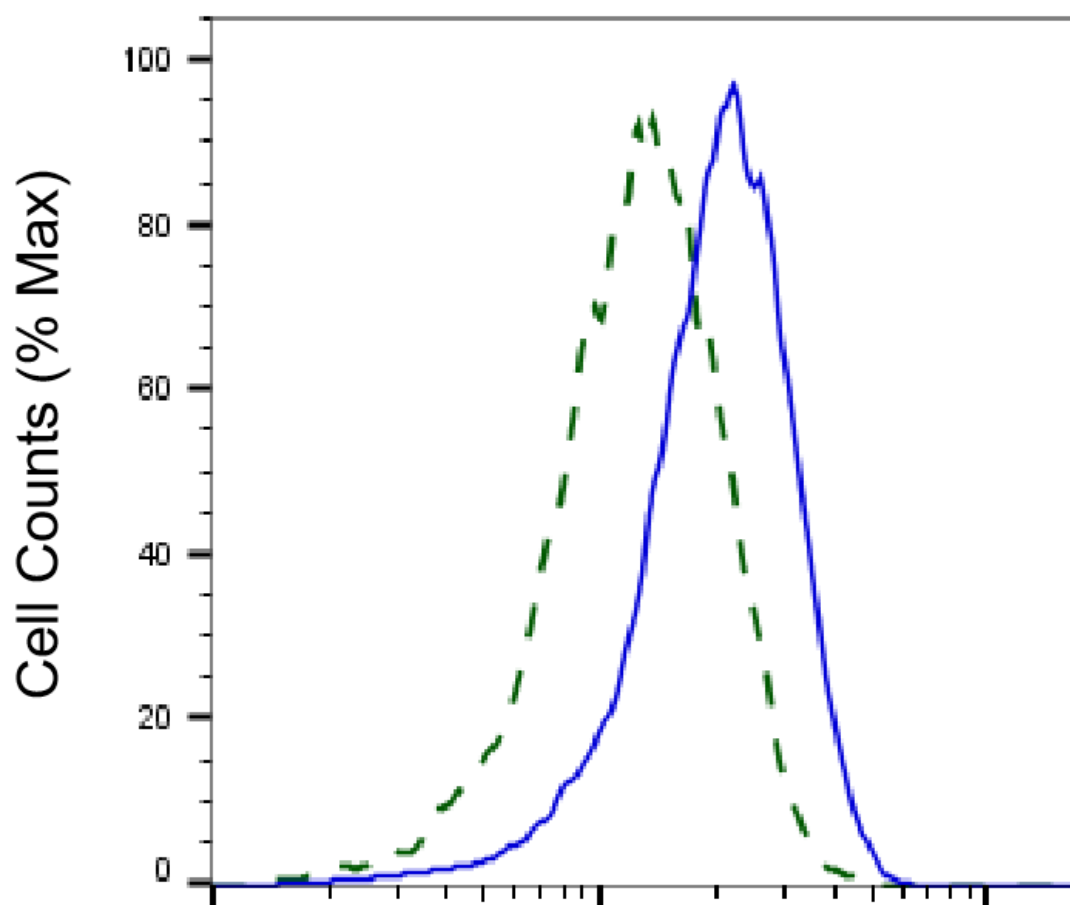
### SUPPORT

SUPPORT@GENUINBIOTECH.COM  
TEL: +1-540-855-7041

### ORDERS

SALES@GENUINBIOTECH.COM  
FAX: +1-540-855-7041

[WWW.GENUINBIOTECH.COM](http://WWW.GENUINBIOTECH.COM)



Copyright ©2025 Genuin Biotechnologies LLC

## Caspase 2-Alexa Fluor® 647

Validation of Caspase 2 knockdown using flow cytometry. Wild-type(WT, Blue) and knockdown(KD, Green) HeLa cells were stained with anti-Caspase 2 antibody (Cat#61766, 1:2,000) and analyzed using BD flow cytometer.