

KD-Validated Anti-Phospho-GSK3 (alpha + beta)(Y216 + Y279) Recombinant Rabbit



Catalog #: 61768

Aliases

GSK3A; Glycogen Synthase Kinase 3 Alpha; Serine/Threonine-Protein Kinase GSK3A; Glycogen Synthase Kinase-3 Alpha; EC 2.7.11.26; GSK-3 Alpha; EC 2.7.11.1; EC 2.7.11; Glycogen Synthase Kinase 3 Beta; Serine/Threonine-Protein Kinase GSK3B; Glycogen Synthase Kinase-3 Beta; EC 2.7.11.26; GSK-3 Beta; EC 2.7.11.1; EC 2.7.11

Background

Gene Name: GSK3A/GSK3B

NCBI Gene Entry: [2931/2932](#)

UniProt Entry: [P49840/P49841](#)

Application Information

Molecular Weight: Predicted, 51 kDa, observed, 46,51 kDa

Clonality: Rabbit monoclonal antibody

Clone ID: 23GB4380

Species Reactivity: Human, mouse, rat

Applications Tested: Western blotting (WB), flow cytometry (FCM), immunocytochemistry (IC)

Immunogen

A synthesized peptide derived from human Phospho-GSK3 (alpha + beta)(Y216 + Y279)

Isotype

Rabbit IgG

Storage Buffer

Supplied in PBS (pH 7.4) containing 50% glycerol, and 0.02% sodium azide.

Storage

Store at -20 °C for one year.

Recommended Dilutions

Western Blotting (WB): 1:1,000-1:5,000

Flow Cytometry (FCM): 1:2,000

Immunocytochemistry (IC): 1:100-1:1,000

SUPPORT

SUPPORT@GENUINBIOTECH.COM
TEL: +1-540-855-7041

ORDERS

SALES@GENUINBIOTECH.COM
FAX: +1-540-855-7041

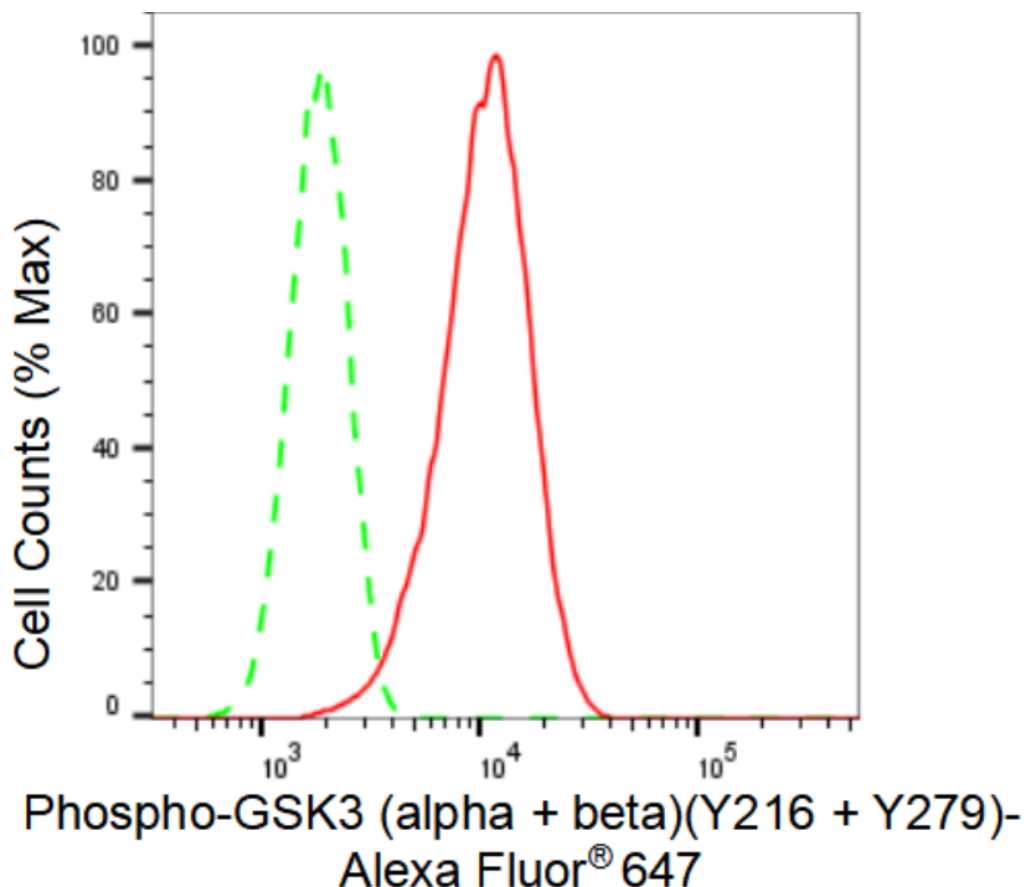
WWW.GENUINBIOTECH.COM

KD-Validated Anti-Phospho-GSK3 (alpha + beta)(Y216 + Y279) Recombinant Rabbit

PAGE 2

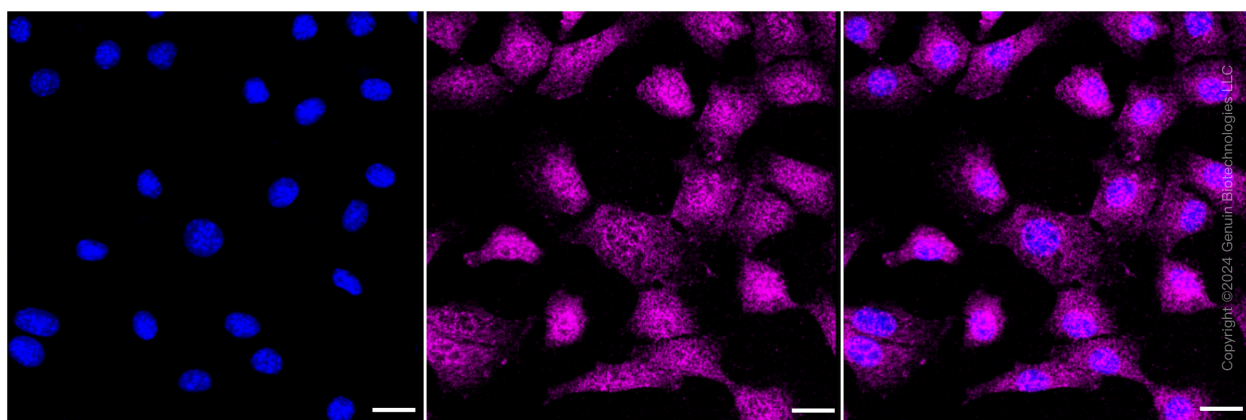
Note: This product is for research use only.

Validation Data



Copyright ©2024 Genuin Biotechnologies LLC

Flow cytometric analysis of Phospho-GSK3 (alpha + beta)(Y216 + Y279) expression in C2C12 cells using Phospho-GSK3 (alpha + beta)(Y216 + Y279) antibody (Cat#61768, 1:2,000). Green, isotype control; red, Phospho-GSK3 (alpha + beta)(Y216 + Y279).



Immunocytochemical staining of C2C12 cells with Phospho-GSK3 (alpha + beta)(Y216 + Y279) antibody (Cat#61768, 1:1,000). Nuclei were stained blue with DAPI; Phospho-GSK3 (alpha +

SUPPORT

SUPPORT@GENUINBIOTECH.COM
TEL: +1-540-855-7041

ORDERS

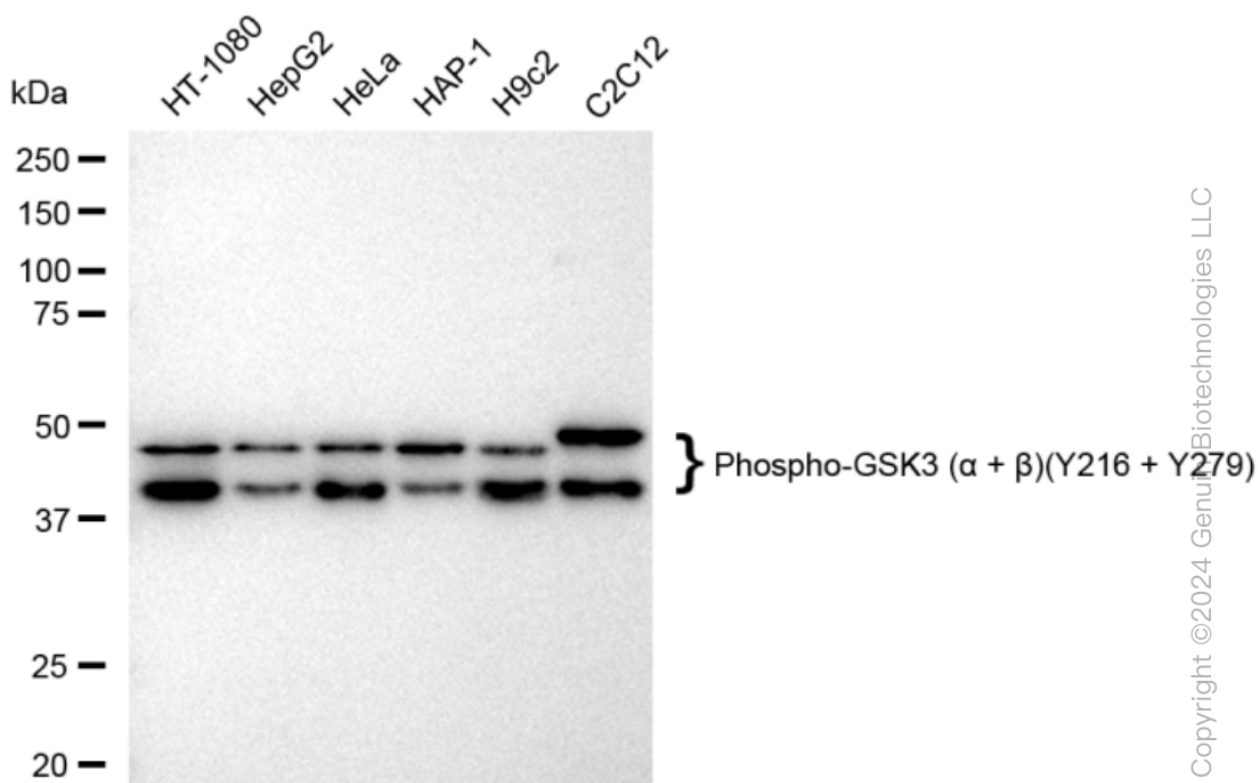
SALES@GENUINBIOTECH.COM
FAX: +1-540-855-7041

WWW.GENUINBIOTECH.COM

KD-Validated Anti-Phospho-GSK3 (alpha + beta)(Y216 + Y279) Recombinant Rabbit

PAGE 3

beta)(Y216 + Y279) was stained magenta with Alexa Fluor® 647. Images were taken using Leica stellaris 5. Protein abundance based on laser Intensity and smart gain: Medium. Scale bar: 20 µm.



Western blotting analysis using anti-Phospho-GSK3 (alpha + beta)(Y216 + Y279) antibody (Cat#61768). Total cell lysates (30 µg) from various cell lines were loaded and separated by SDS-PAGE. The blot was incubated with anti-Phospho-GSK3 (alpha + beta)(Y216 + Y279) antibody (Cat#61768, 1:5,000) and HRP-conjugated goat anti-rabbit secondary antibody (Cat#201, 1:20,000) respectively. Image was developed using FeQ™ ECL Substrate Kit (Cat#226).

SUPPORT

SUPPORT@GENUINBIOTECH.COM
TEL: +1-540-855-7041

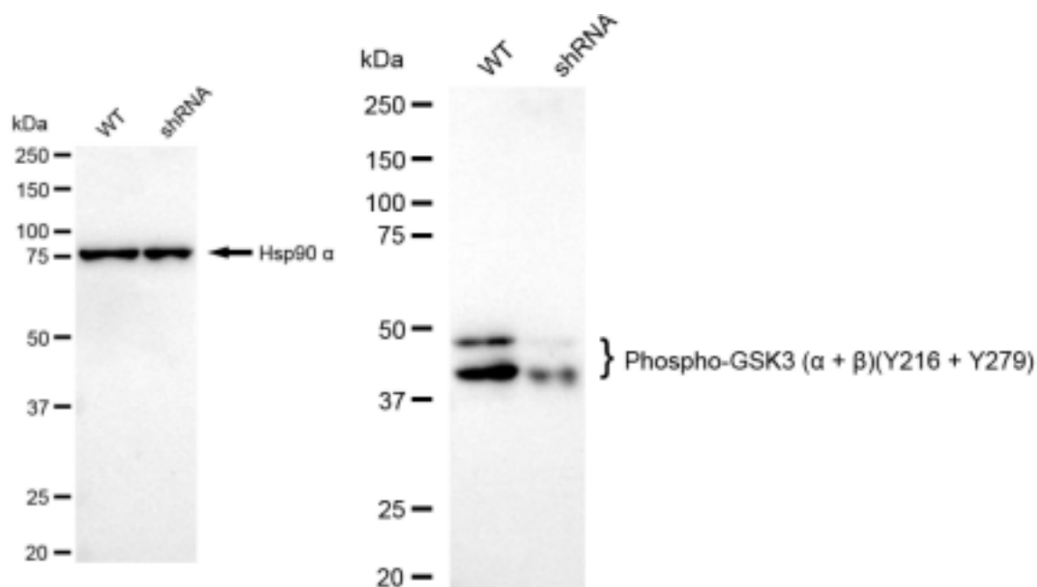
ORDERS

SALES@GENUINBIOTECH.COM
FAX: +1-540-855-7041

WWW.GENUINBIOTECH.COM

KD-Validated Anti-Phospho-GSK3 (alpha + beta)(Y216 + Y279) Recombinant Rabbit

PAGE 4



Copyright ©2024 Genuin Biotechnologies LLC

Western blotting analysis using anti-Phospho-GSK3 (alpha + beta)(Y216 + Y279) antibody (Cat#61768). Phospho-GSK3 (alpha + beta)(Y216 + Y279) expression in wild type (WT) and Phospho-GSK3 (alpha + beta)(Y216 + Y279) shRNA knockdown (KD) HeLa cells with 30 μ g of total cell lysates. Hsp90 α serves as a loading control. The blot was incubated with anti-Phospho-GSK3 (alpha + beta)(Y216 + Y279) antibody (Cat#61768, 1:5,000) and HRP-conjugated goat anti-rabbit secondary antibody (Cat#201, 1:20,000) respectively. Image was developed using FeQ™ ECL Substrate Kit (Cat#226).

SUPPORT

SUPPORT@GENUINBIOTECH.COM
TEL: +1-540-855-7041

ORDERS

SALES@GENUINBIOTECH.COM
FAX: +1-540-855-7041

WWW.GENUINBIOTECH.COM