

# KD-Validated Anti-Caspase 9 Rabbit Monoclonal Antibody



**Catalog #: 61769**

## Aliases

CASP9; Caspase 9; Apoptosis-Related Cysteine Peptidase; Regulatory Subunit 56; Apoptotic Protease Mch-6; PPP1R56; APAF-3; Apoptotic Protease Activating Factor 3; ICE-LAP6; caspase-9; MCH6; Protein Phosphatase 1; Regulatory Subunit 56; ICE-Like Apoptotic Protease 6; CASP-9; APAF3; EC 3.4.22.62; Caspase 9; Apoptosis-Related Cysteine Protease; Apoptotic Protease-Activating Factor 3; Protein Phosphatase 1

## Background

Gene Name: CASP9

NCBI Gene Entry: [842](#)

UniProt Entry: [P55211](#)

## Application Information

Molecular Weight: Predicted, 46 kDa, observed, 46 kDa

Clonality: Rabbit monoclonal antibody

Clone ID: 23GB1005

Species Reactivity: Human, mouse

Applications Tested: Western blotting (WB), flow cytometry (FCM), immunocytochemistry (IC)

## Immunogen

Recombinant protein of human Caspase-9

## Isotype

Rabbit IgG

## Storage Buffer

Supplied in PBS (pH 7.4) containing 50% glycerol, and 0.02% sodium azide.

## Storage

Store at -20 °C for one year.

## Recommended Dilutions

Western Blotting (WB): 1:1,000-1:2,500

Flow Cytometry (FCM): 1:2,000

Immunocytochemistry (IC): 1:100-1:1,000

---

### SUPPORT

SUPPORT@GENUINBIOTECH.COM  
TEL: +1-540-855-7041

### ORDERS

SALES@GENUINBIOTECH.COM  
FAX: +1-540-855-7041

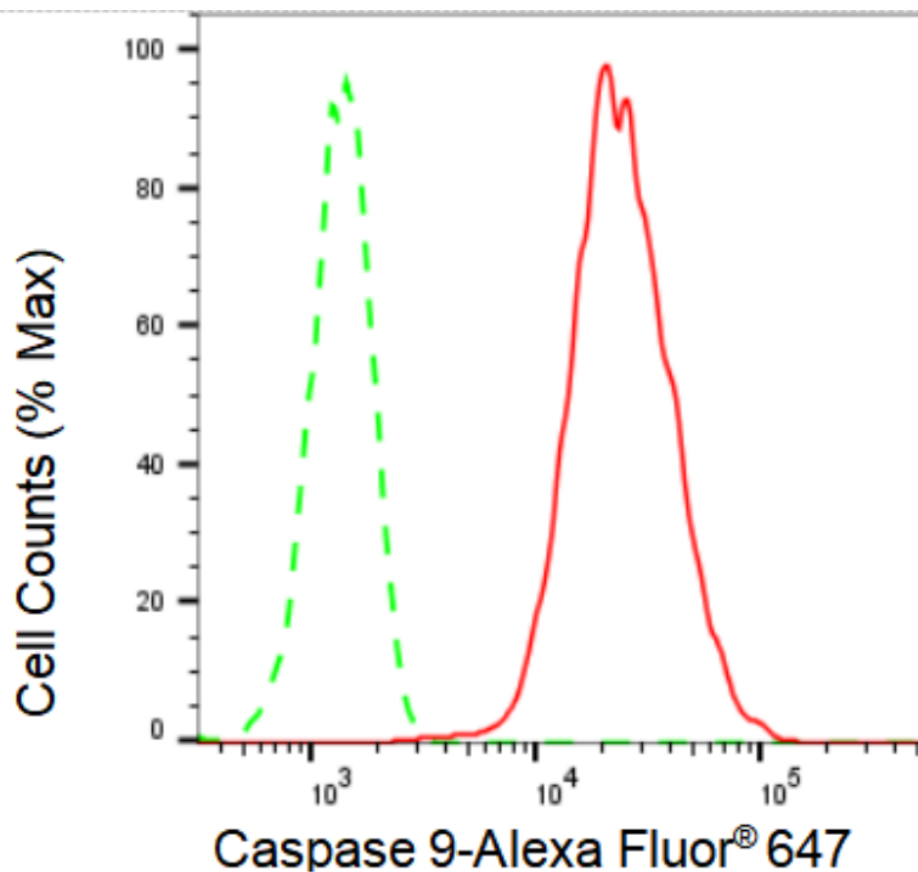
[WWW.GENUINBIOTECH.COM](http://WWW.GENUINBIOTECH.COM)

## KD-Validated Anti-Caspase 9 Rabbit Monoclonal Antibody

PAGE 2

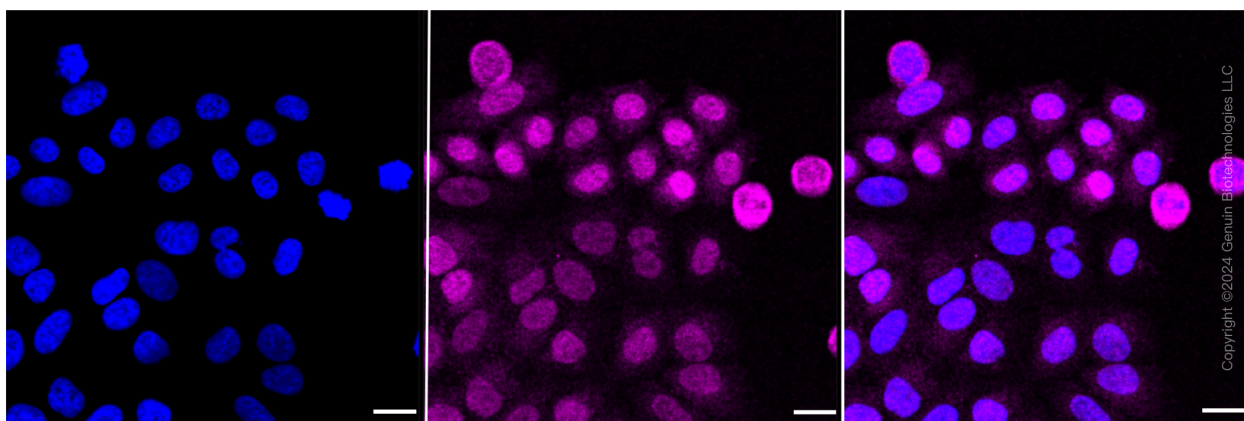
**Note:** This product is for research use only.

### Validation Data



Copyright ©2024 Genuin Biotechnologies LLC

Flow cytometric analysis of Caspase 9 expression in HepG2 cells using Caspase 9 antibody (Cat#61769, 1:2,000). Green, isotype control; red, Caspase 9.



Immunocytochemical staining of HepG2 cells with caspase 9 antibody (Cat#61769, 1:1000). Nuclei were stained blue with DAPI; Caspase 9 was stained magenta with Alexa Fluor® 647. Images were taken using Leica stellaris 5. Protein abundance based on laser Intensity and smart

#### SUPPORT

SUPPORT@GENUINBIOTECH.COM  
TEL: +1-540-855-7041

#### ORDERS

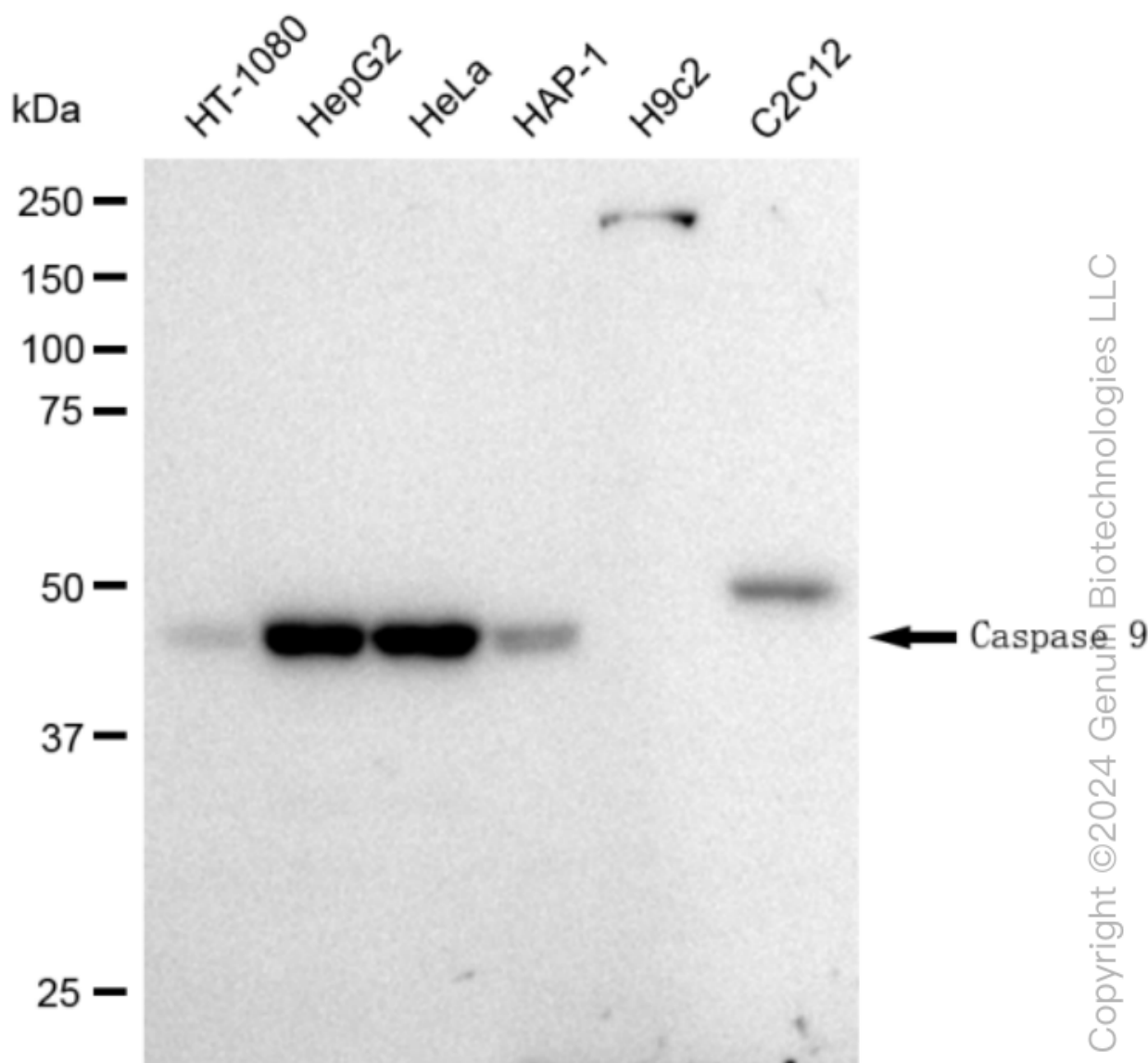
SALES@GENUINBIOTECH.COM  
FAX: +1-540-855-7041

WWW.GENUINBIOTECH.COM

## KD-Validated Anti-Caspase 9 Rabbit Monoclonal Antibody

PAGE 3

gain: medium. Scale bar: 20  $\mu$ m.



Western blotting analysis using anti-Caspase 9 antibody (Cat#61769). Total cell lysates (30  $\mu$ g) from various cell lines were loaded and separated by SDS-PAGE. The blot was incubated with anti-Caspase 9 antibody (Cat#61769, 1:2,500) and HRP-conjugated goat anti-rabbit secondary antibody (Cat#201, 1:50,000) respectively. Image was developed using FeQ™ ECL Substrate Kit (Cat#226).

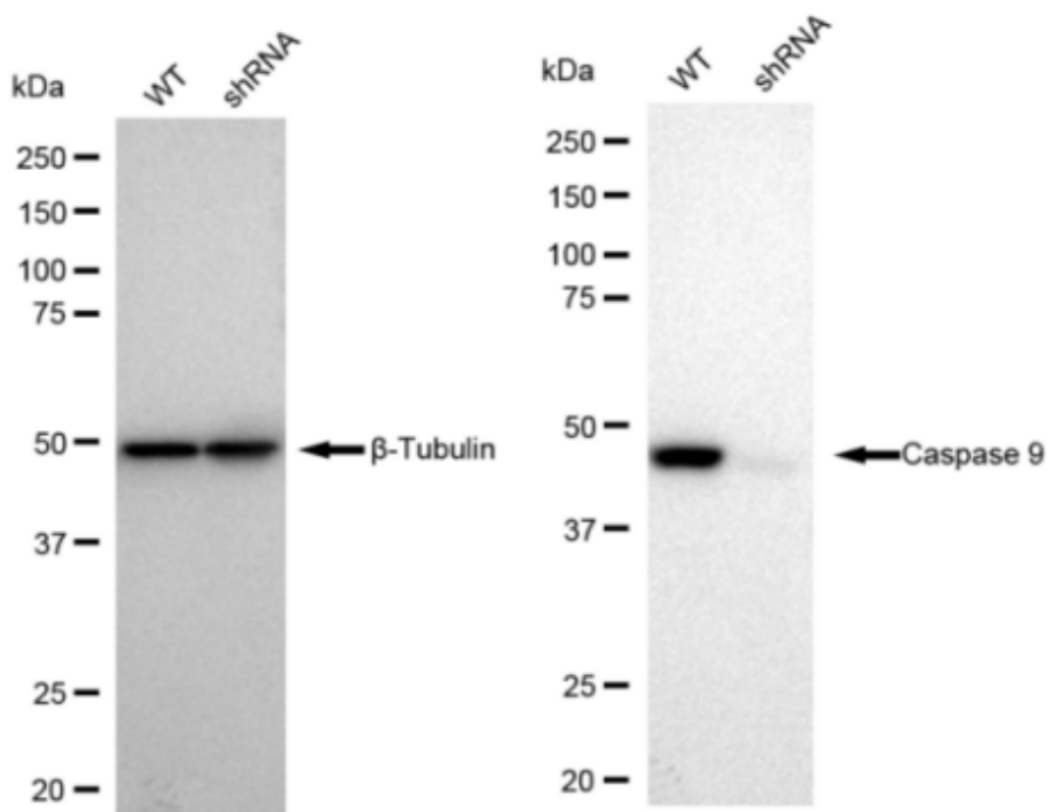
### SUPPORT

SUPPORT@GENUINBIOTECH.COM  
TEL: +1-540-855-7041

### ORDERS

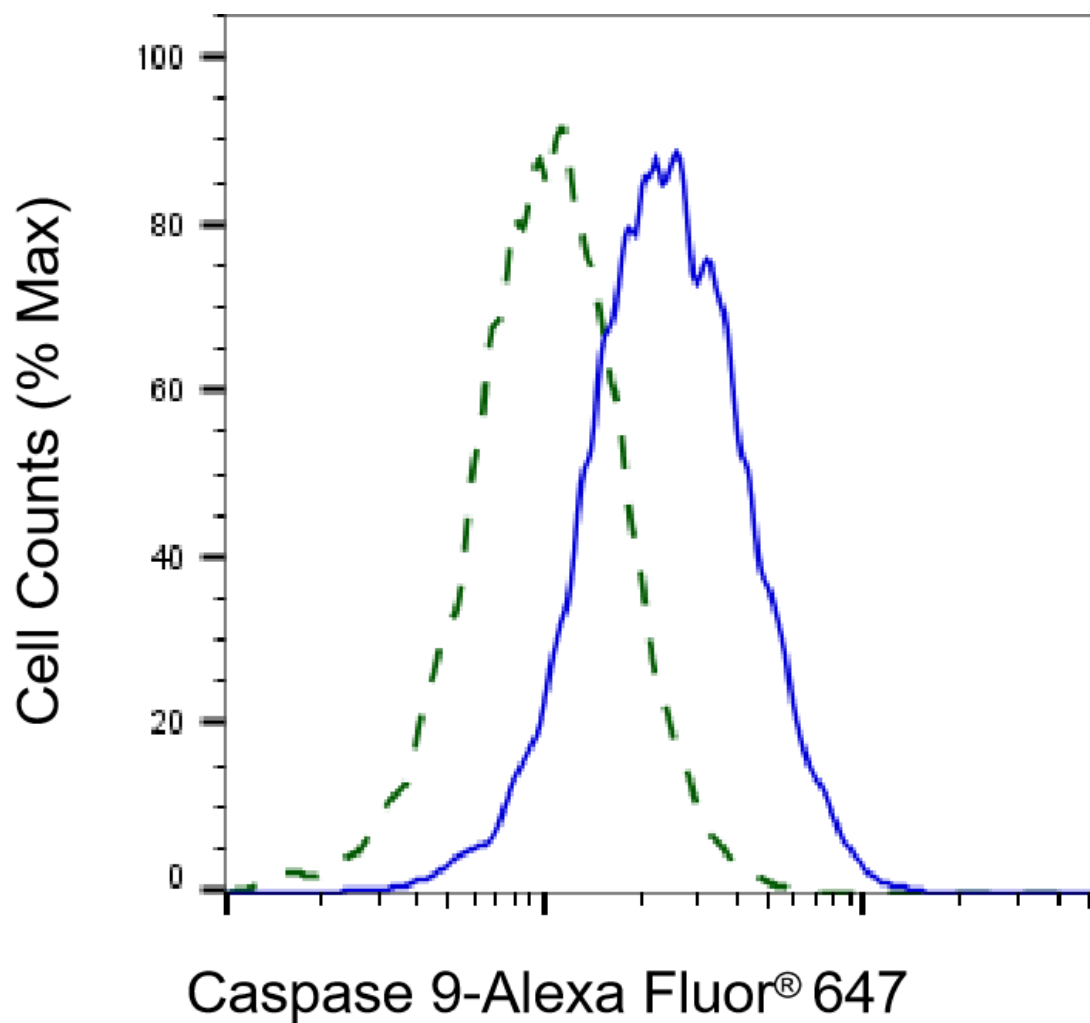
SALES@GENUINBIOTECH.COM  
FAX: +1-540-855-7041

WWW.GENUINBIOTECH.COM



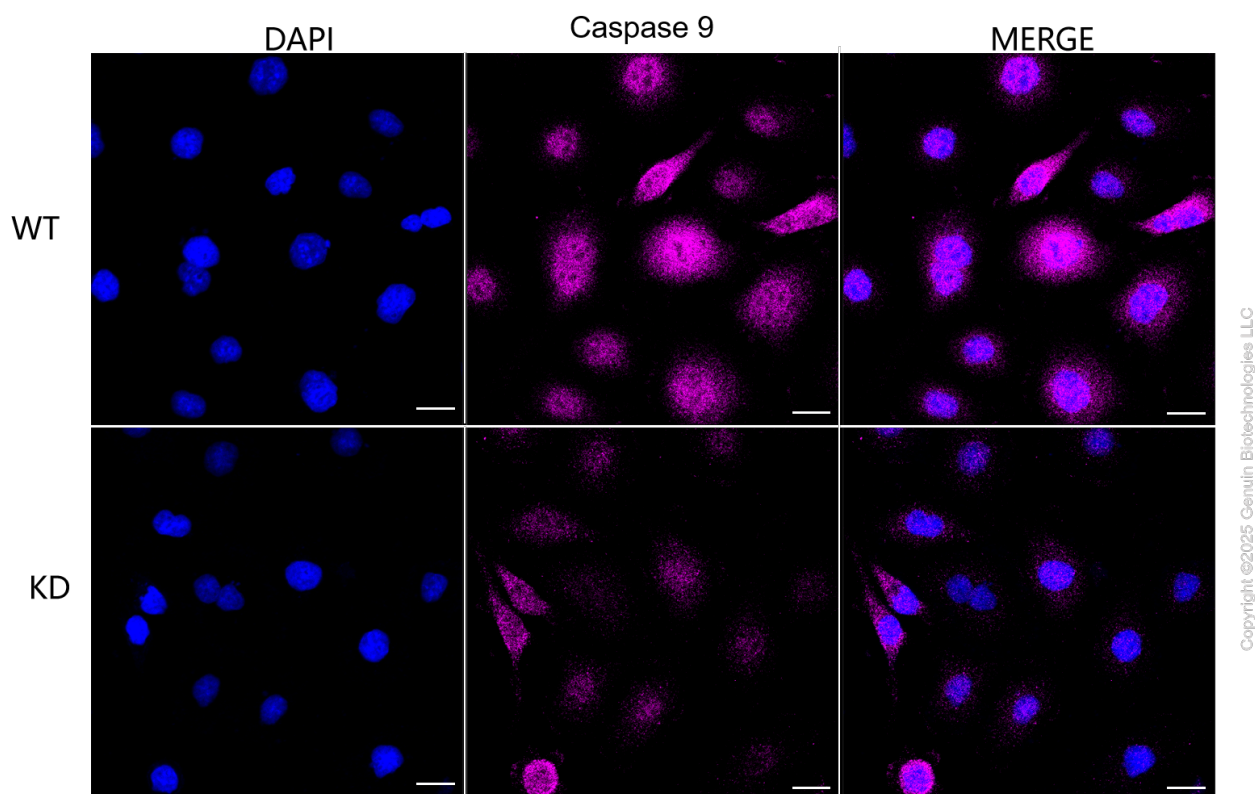
Copyright ©2024 Genuin Biotechnologies LLC

Western blotting analysis using anti-Caspase 9 antibody (Cat#61769). Caspase 9 expression in wild type (WT) and Caspase 9 shRNA knockdown (KD) HeLa cells with 30  $\mu$ g of total cell lysates.  $\beta$ -Tubulin serves as a loading control. The blot was incubated with anti-Caspase 9 antibody (Cat#61769, 1:5,000) and HRP-conjugated goat anti-rabbit secondary antibody (Cat#201, 1:20,000) respectively. Image was developed using FeQ™ ECL Substrate Kit (Cat#226).



Copyright ©2025 Genuin Biotechnologies LLC

Validation of Caspase 9 knockdown using flow cytometry. Wild-type(WT, Blue) and knockdown(KD, Green) HeLa cells were stained with anti-Caspase 9 antibody (Cat#61769, 1:2,000) and analyzed using BD flow cytometer.



Immunocytochemical staining of HeLa cells using anti-Caspase 9 antibody (Cat#61769, 1:1,000), Top panel: wild-type (WT); Bottom panel: Caspase 9 shRNA knockdown (KD). Nuclei were stained blue with DAPI; Caspase 9 was stained magenta with Alexa Fluor® 647. Scale bar, 20  $\mu$ m. Permeabilization: Triton.