

KD-Validated Anti-Bcl2 Rabbit Monoclonal Antibody



Catalog #: 61770

Aliases

BCL2 Apoptosis Regulator; PPP1R50; Bcl-2; Protein Phosphatase 1, Regulatory Subunit 50; Apoptosis Regulator Bcl-2; B-Cell CLL/Lymphoma 2; BCL2, Apoptosis Regulator

Background

Gene Name: BCL2

NCBI Gene Entry: [596](#)

UniProt Entry: [P10415](#)

Application Information

Molecular Weight: Predicted, 26 kDa; observed, 26 kDa

Clonality: Rabbit monoclonal antibody

Clone ID: 25GB3660

Species Reactivity: Human, mouse

Applications Tested: Western blotting (WB), flow cytometry (FCM)

Immunogen

Recombinant protein of human Bcl-2

Isotype

Rabbit IgG

Storage Buffer

Supplied in PBS (pH 7.4) containing 50% glycerol, and 0.02% sodium azide.

Storage

Store at -20 °C for one year.

Recommended Dilutions

Western Blotting (WB): 1:1,000-1:5,000

Flow Cytometry (FCM): 1:2,000

Note: This product is for research use only.

Validation Data

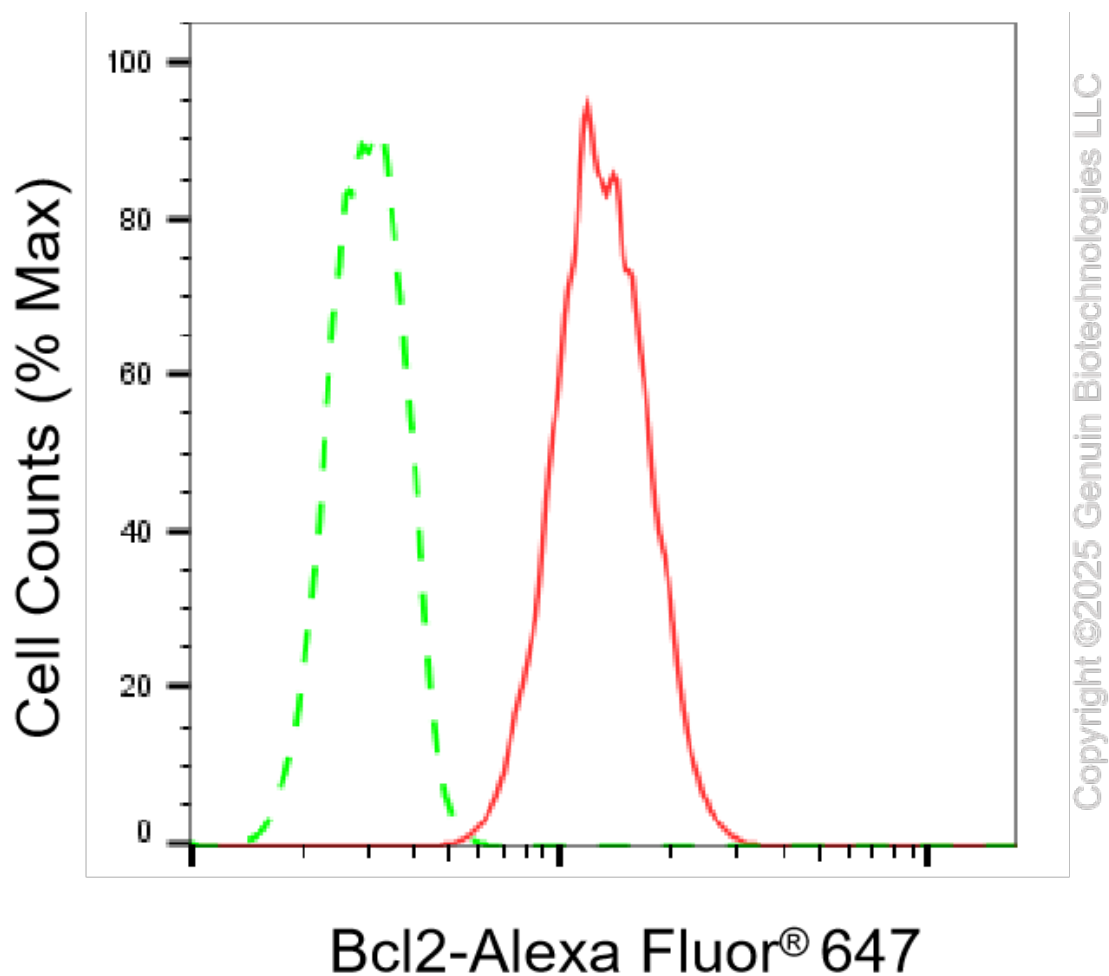
SUPPORT

SUPPORT@GENUINBIOTECH.COM
TEL: +1-540-855-7041

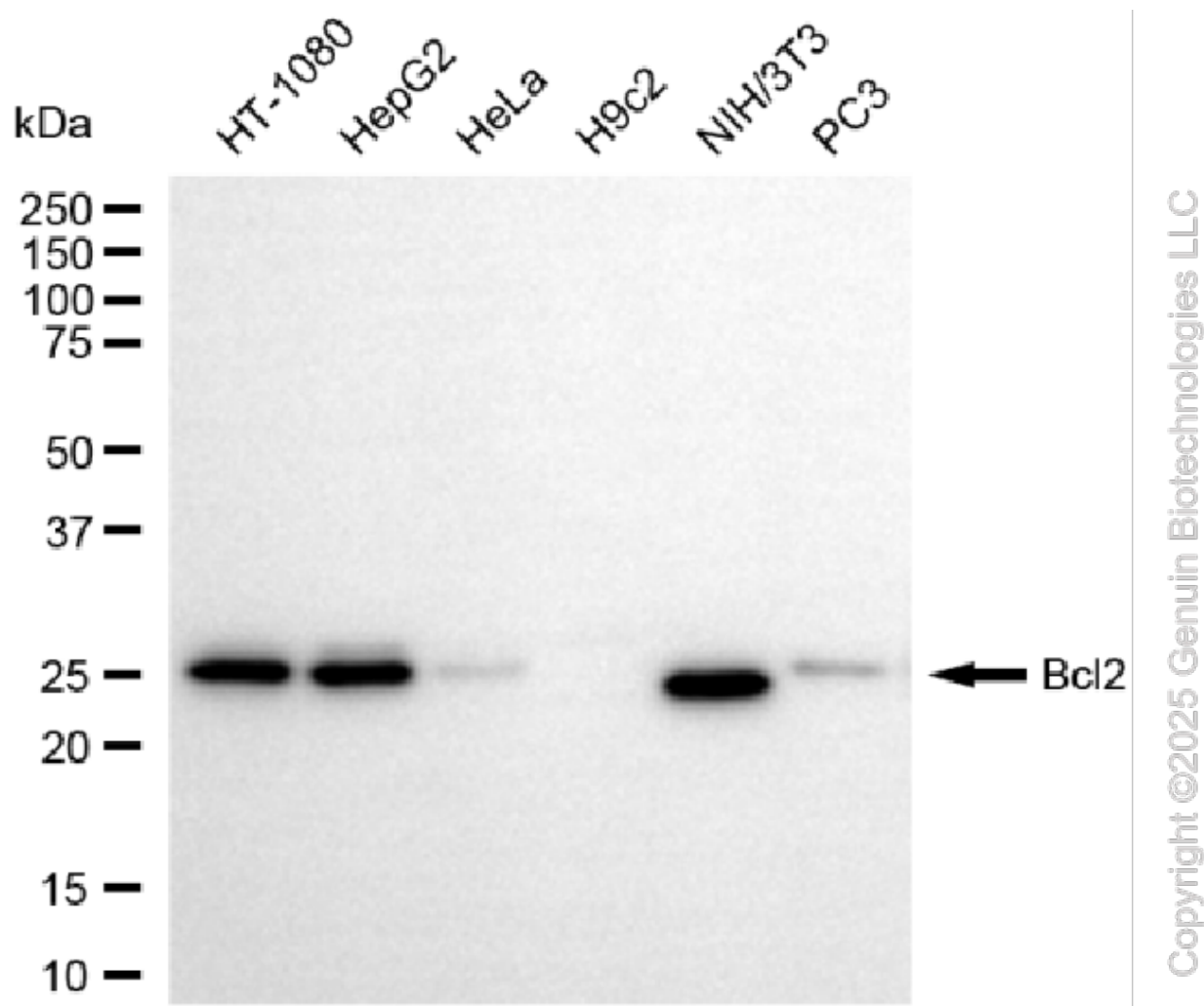
ORDERS

SALES@GENUINBIOTECH.COM
FAX: +1-540-855-7041

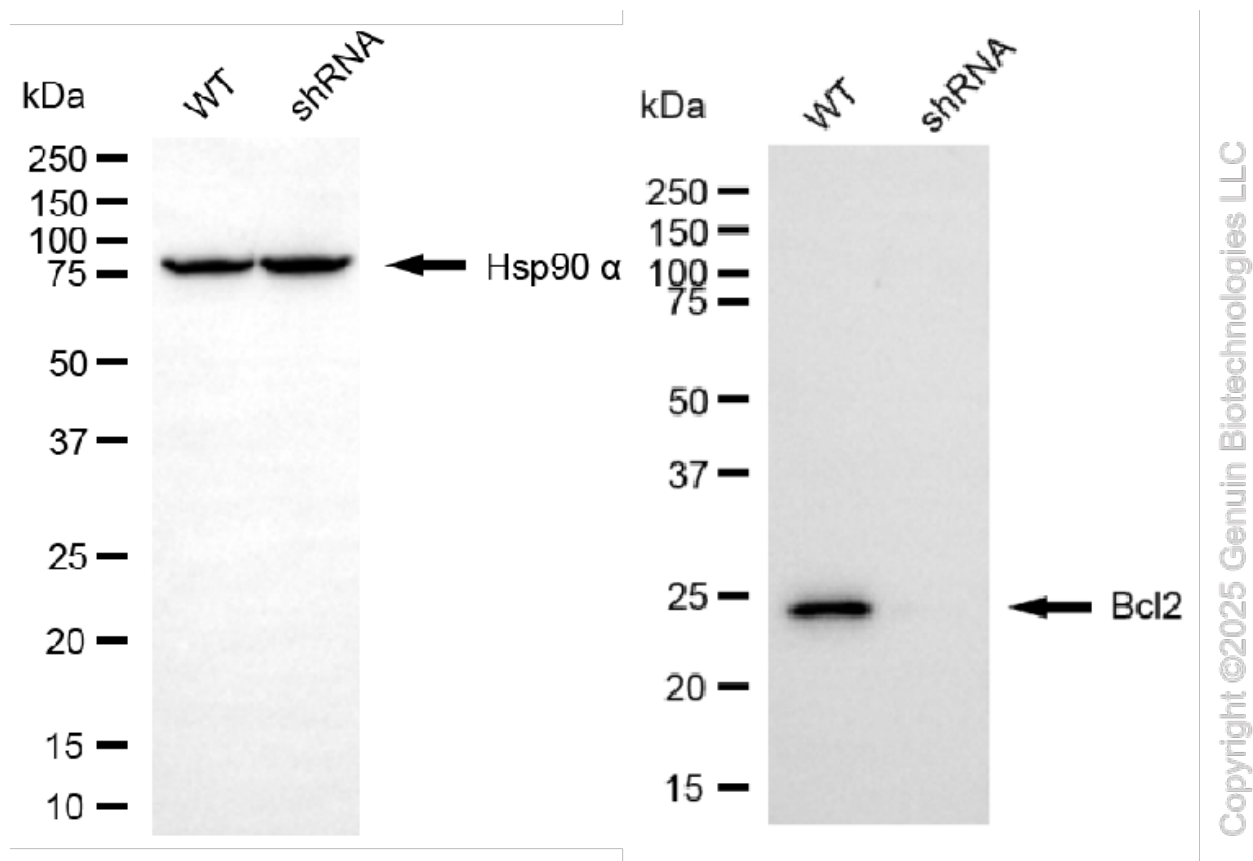
WWW.GENUINBIOTECH.COM



Flow cytometric analysis of Bcl2 expression in HT-1080 cells using Bcl2 antibody (Cat#61770, 1:2,000). Green, isotype control; red, Bcl2.



Western blotting analysis using anti-bcl2 antibody (Cat#61770). Total cell lysates (30 μ g) from various cell lines were loaded and separated by SDS-PAGE. The blot was incubated with anti-bcl2 antibody (Cat#61770, 1:5,000) and HRP-conjugated goat anti-rabbit secondary antibody (Cat#201, 1:20,000) respectively. Image was developed using NaQ™ ECL Substrate Kit (Cat#716).



Western blotting analysis using anti-Bcl2 antibody (Cat#61770). Bcl2 expression in wild-type (WT) and BCL2 shRNA knockdown (KD) HT-1080 cells with 20 µg of total cell lysates. Hsp90 α serves as a loading control. The blot was incubated with anti-Bcl2 antibody (Cat#61770, 1:5,000) and HRP-conjugated goat anti-rabbit secondary antibody (Cat#201, 1:20,000) respectively. Image was developed using NaQ™ ECL Substrate Kit (Cat#716).