

KD-Validated Anti-Histone H3 (acetyl K56) Recombinant Rabbit Monoclonal Antibody



Catalog #: 61772

Aliases

H3C1; H3 Clustered Histone 1; HIST1H3A; H3/A; H3FA; Histone Cluster 1 H3 Family Member A; H3 Histone Family, Member A; Histone Cluster 1, H3a; Histone 1, H3a; Histone H3.1; Histone H3/A; H3FC HIST1H3C; Histone H3/B; Histone H3/C; Histone H3/D; Histone H3/F; Histone H3/H; Histone H3/I; Histone; H3/J; Histone H3/K; Histone H3/L; HIST1H3B; HIST1H3D; HIST1H3E; HIST1H3F; HIST1H3G; HIST1H3H; HIST1H3I; HIST1H3J; H3C10; H3C11; H3C12; H3C2; H3C3; H3C4; H3C6; H3C7; H3C8; H3FL; H3FB; H3FD; H3FI; H3FH; H3FK; H3FF; H3FJ

Background

Gene Name: H3C1

NCBI Gene Entry: [8350](#)

UniProt Entry: [P68431](#)

Application Information

Molecular Weight: Predicted, 15 kDa, observed, 15 kDa

Clonality: Rabbit monoclonal antibody

Clone ID: 23GB4395

Species Reactivity: Human, mouse, rat

Applications Tested: Western blotting (WB), flow cytometry (FCM), immunocytochemistry (IC)

Immunogen

A synthesized peptide derived from human Histone H3 (acetyl K56)

Isotype

Rabbit IgG

Storage Buffer

Supplied in PBS (pH 7.4) containing 50% glycerol, and 0.02% sodium azide.

Storage

Store at -20 °C for one year.

Recommended Dilutions

Western Blotting (WB): 1:1,000-1:5,000

Flow Cytometry (FCM): 1:2,000

SUPPORT

SUPPORT@GENUINBIOTECH.COM
TEL: +1-540-855-7041

ORDERS

SALES@GENUINBIOTECH.COM
FAX: +1-540-855-7041

WWW.GENUINBIOTECH.COM

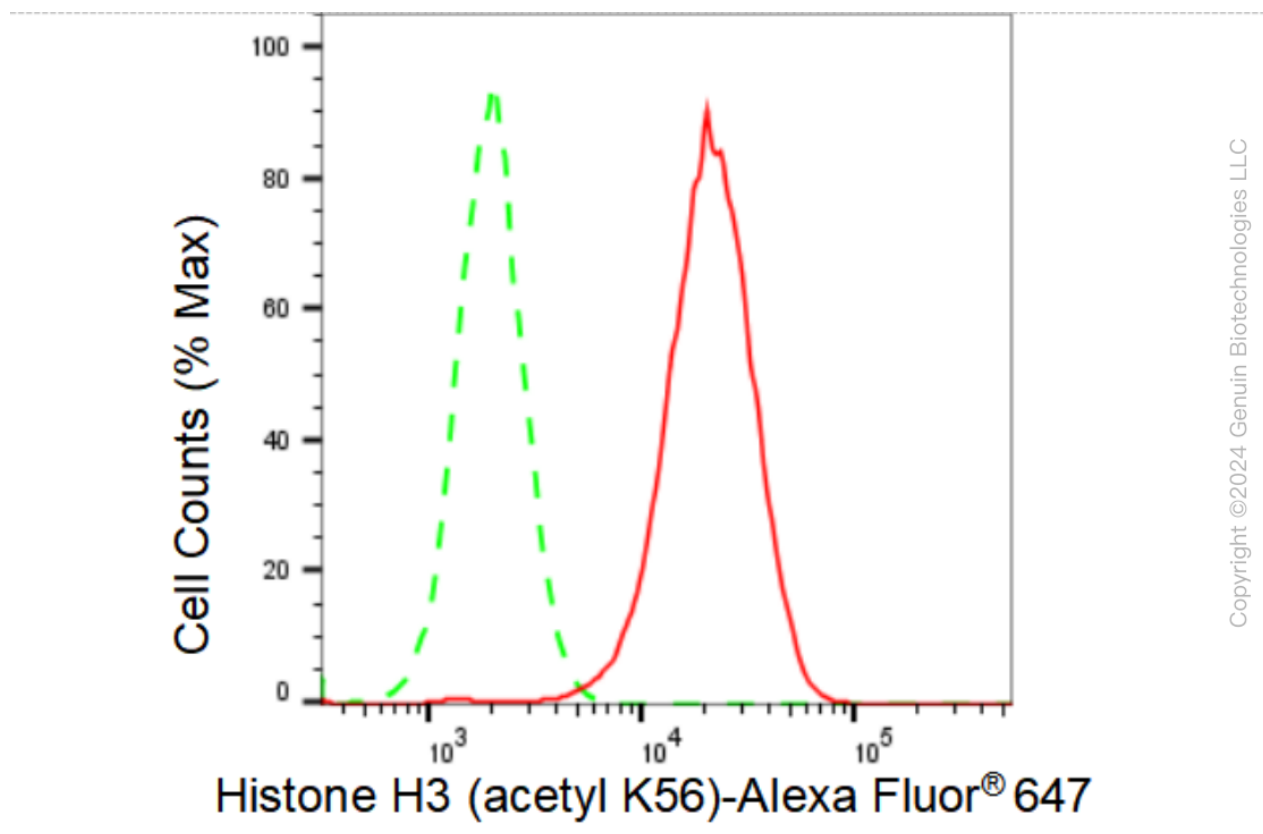
KD-Validated Anti-Histone H3 (acetyl K56) Recombinant Rabbit Monoclonal Antibody

PAGE 2

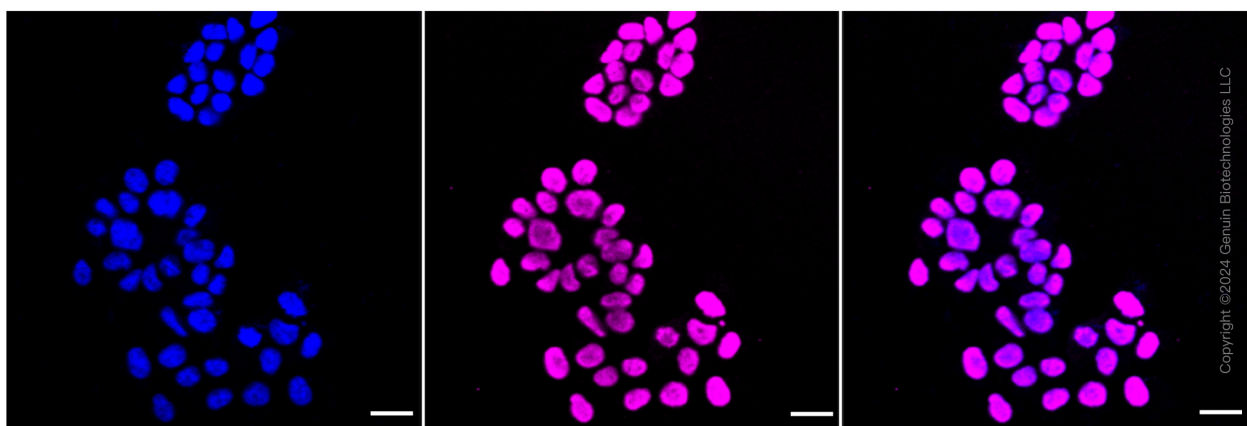
Immunocytochemistry (IC): 1:100-1:1,000

Note: This product is for research use only.

Validation Data



Flow cytometric analysis of Histone H3 (acetyl K56) expression in HAP-1 cells using Histone H3 (acetyl K56) antibody (Cat#61772, 1:2,000). Green, isotype control; red, Histone H3 (acetyl K56).



Immunocytochemical staining of HAP-1 cells with Histone H3 (acetyl K56) antibody (Cat#61772, 1:1,000). Nuclei were stained blue with DAPI; Histone H3 (acetyl K56) was stained

SUPPORT

SUPPORT@GENUINBIOTECH.COM
TEL: +1-540-855-7041

ORDERS

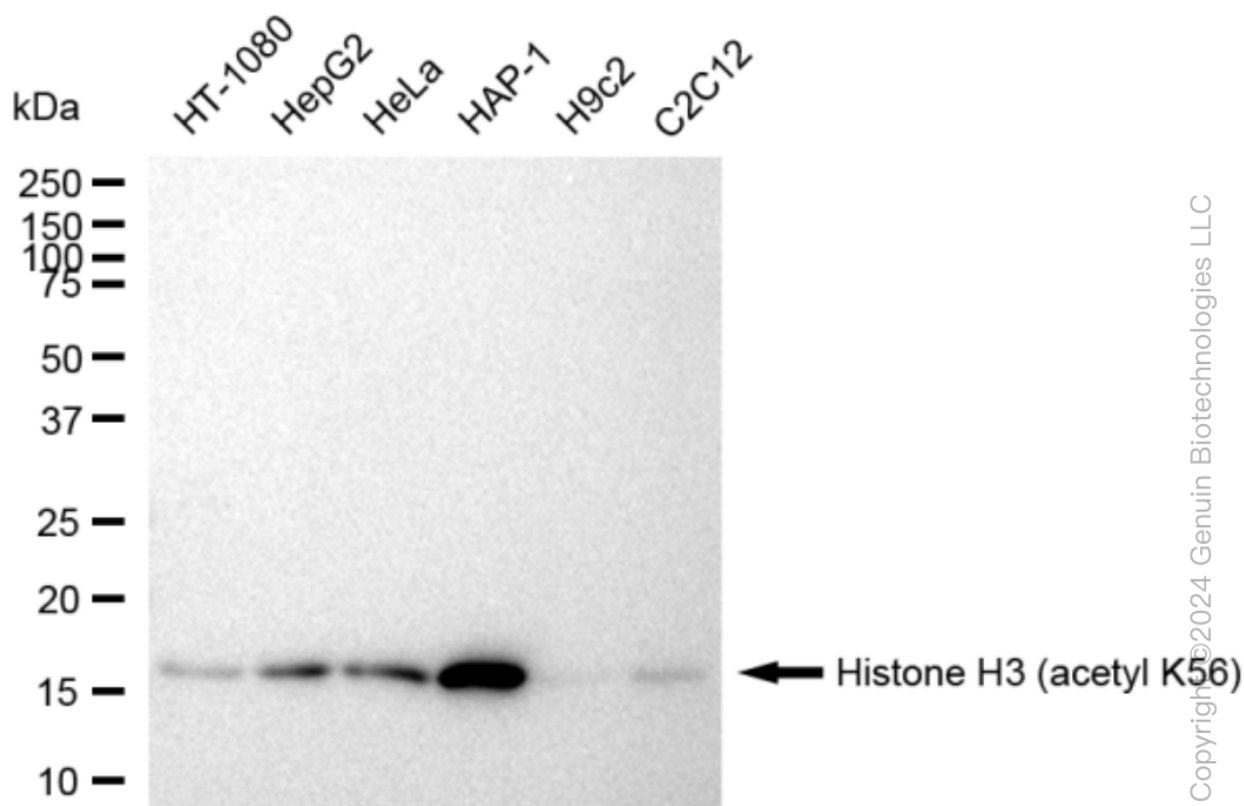
SALES@GENUINBIOTECH.COM
FAX: +1-540-855-7041

WWW.GENUINBIOTECH.COM

KD-Validated Anti-Histone H3 (acetyl K56) Recombinant Rabbit Monoclonal Antibody

PAGE 3

magenta with Alexa Fluor® 647. Images were taken using Leica stellaris 5. Protein abundance based on laser Intensity and smart gain: Medium. Scale bar: 20 μ m.



Western blotting analysis using anti-Histone H3 (acetyl K56) antibody (Cat#61772). Total cell lysates (5 μ g) from various cell lines were loaded and separated by SDS-PAGE. The blot was incubated with anti-Histone H3 (acetyl K56) antibody (Cat#61772, 1:5,000) and HRP-conjugated goat anti-rabbit secondary antibody (Cat#201, 1:20,000) respectively. Image was developed using FeQ™ ECL Substrate Kit (Cat#226).

SUPPORT

SUPPORT@GENUINBIOTECH.COM
TEL: +1-540-855-7041

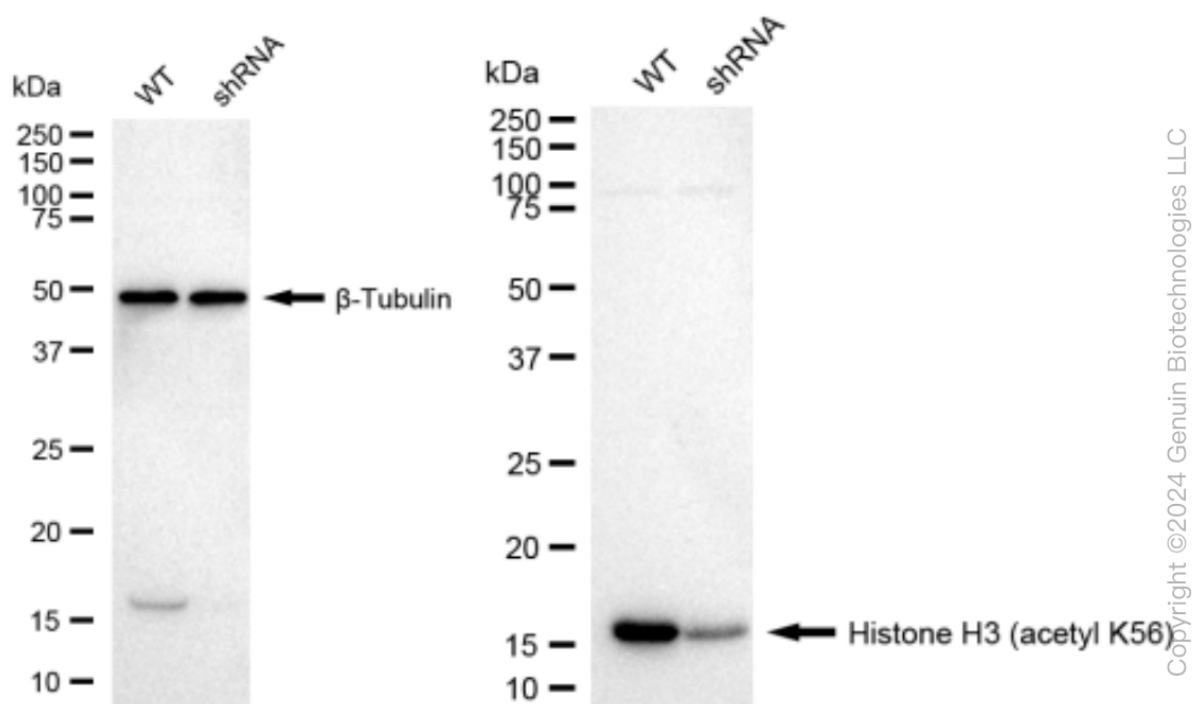
ORDERS

SALES@GENUINBIOTECH.COM
FAX: +1-540-855-7041

WWW.GENUINBIOTECH.COM

KD-Validated Anti-Histone H3 (acetyl K56) Recombinant Rabbit Monoclonal Antibody

PAGE 4



Western blotting analysis using anti-Histone H3 (acetyl K56) antibody (Cat#61772). Histone H3 (acetyl K56) expression in wild type (WT) and Histone H3 (acetyl K56) shRNA knockdown (KD) HeLa cells with 5 μ g of total cell lysates. β -Tubulin serves as a loading control. The blot was incubated with anti-Histone H3 (acetyl K56) antibody (Cat#61772, 1:5,000) and HRP-conjugated goat anti-rabbit secondary antibody (Cat#201, 1:20,000) respectively. Image was developed using FeQ™ ECL Substrate Kit (Cat#226).

SUPPORT

SUPPORT@GENUINBIOTECH.COM
TEL: +1-540-855-7041

ORDERS

SALES@GENUINBIOTECH.COM
FAX: +1-540-855-7041

WWW.GENUINBIOTECH.COM