

# KD-Validated Anti-Nicastrin Rabbit Monoclonal Antibody



**Catalog #: 61775**

## Aliases

Nicastrin; ATAG1874; Anterior Pharynx-Defective 2; KIAA0253

## Background

Gene Name: NCSTN

NCBI Gene Entry: [23385](#)

UniProt Entry: [Q92542](#)

## Application Information

Molecular Weight: Predicted, 78 kDa, observed, 110-120 kDa

Clonality: Rabbit monoclonal antibody

Clone ID: 23GB1040

Species Reactivity: Human, mouse, rat

Applications Tested: Western blotting (WB), flow cytometry (FCM), immunocytochemistry (IC)

## Immunogen

A synthesized peptide derived from human Nicastrin

## Isotype

Rabbit IgG

## Storage Buffer

Supplied in PBS (pH 7.4) containing 50% glycerol, and 0.02% sodium azide.

## Storage

Store at -20 °C for one year.

## Recommended Dilutions

Western Blotting (WB): 1:1,000-1:5,000

Flow Cytometry (FCM): 1:2,000

Immunocytochemistry (IC): 1:100-1:1,000

**Note:** This product is for research use only.

## Validation Data

---

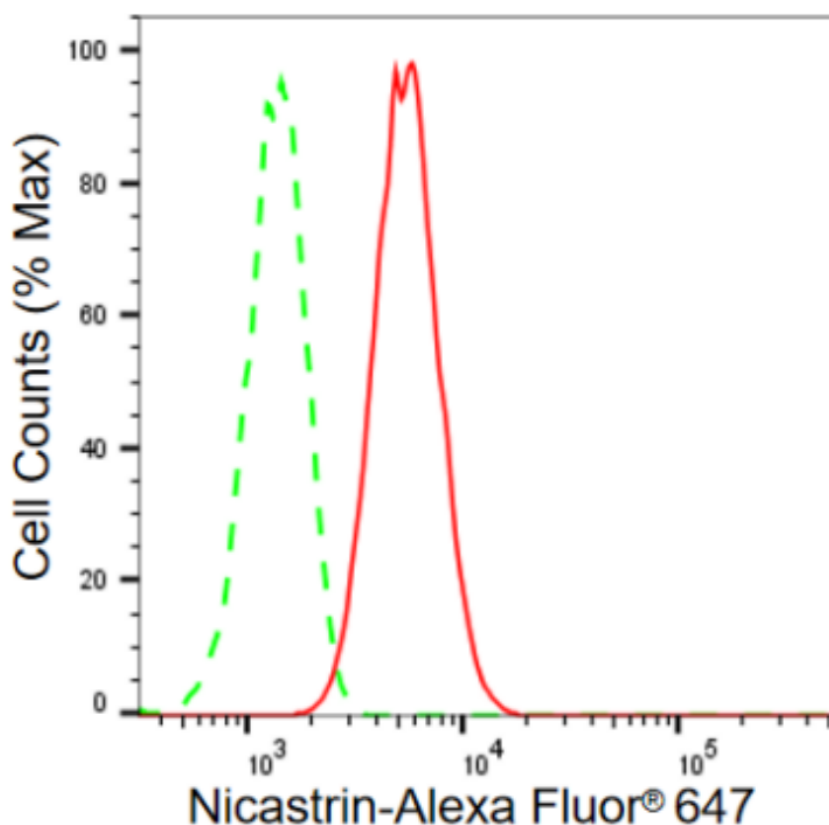
### SUPPORT

SUPPORT@GENUINBIOTECH.COM  
TEL: +1-540-855-7041

### ORDERS

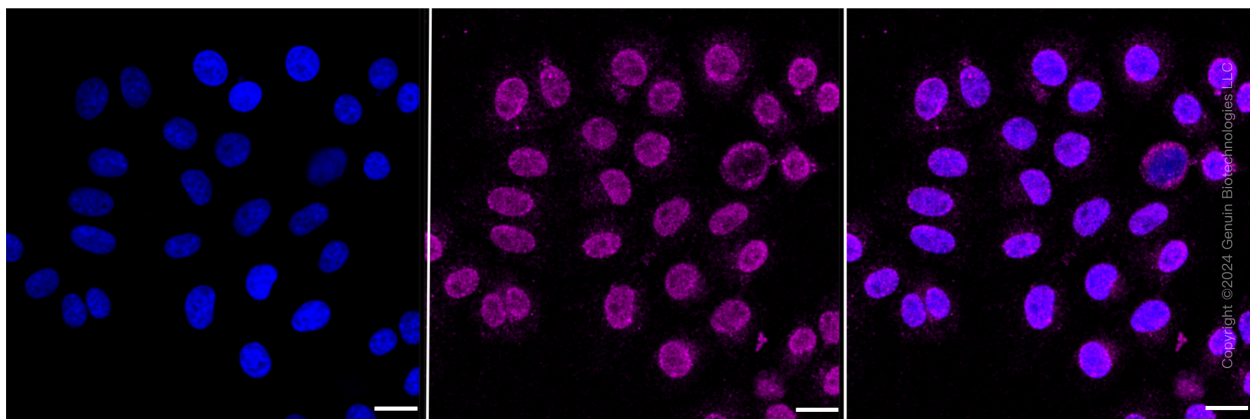
SALES@GENUINBIOTECH.COM  
FAX: +1-540-855-7041

[WWW.GENUINBIOTECH.COM](http://WWW.GENUINBIOTECH.COM)

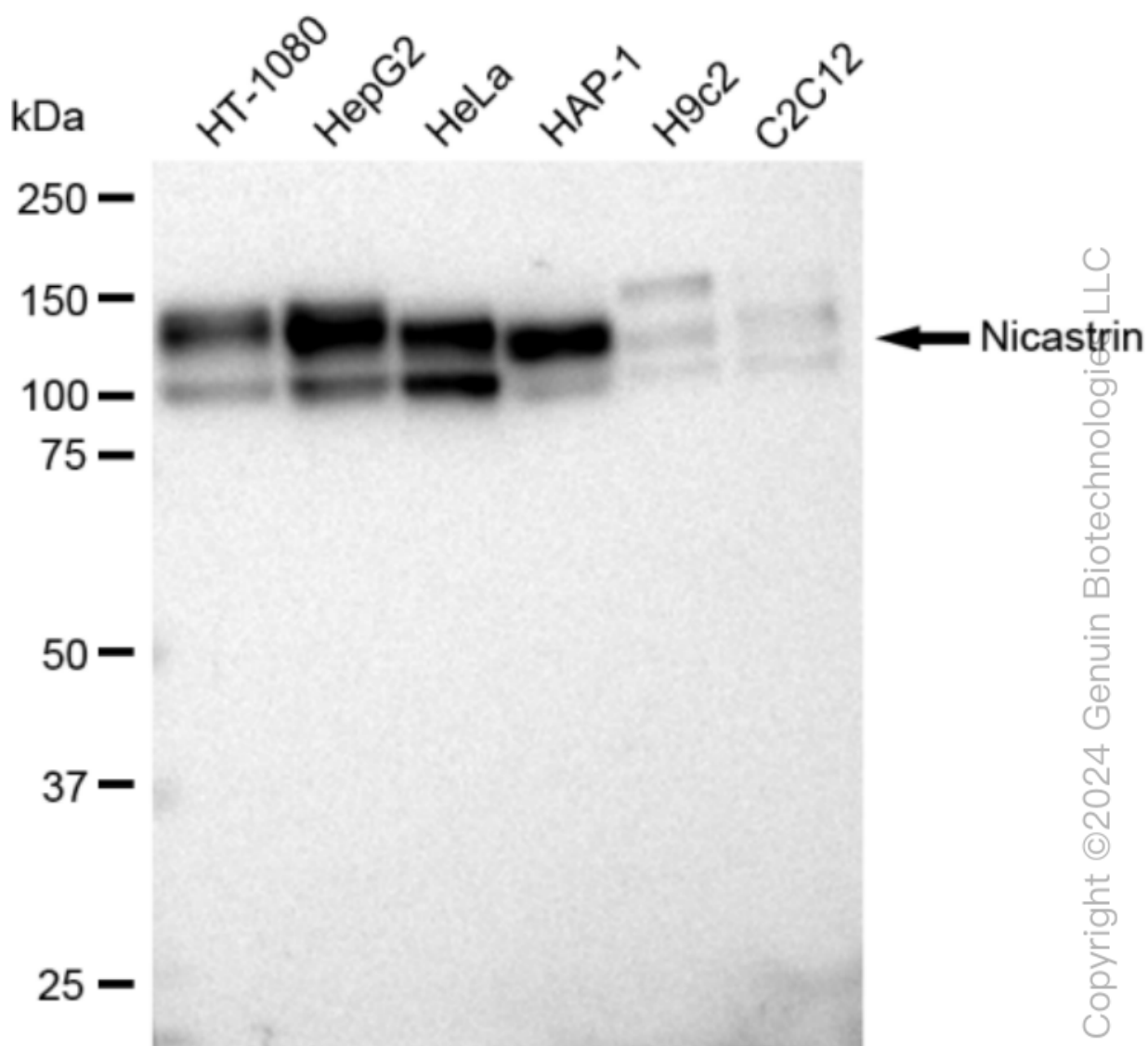


Copyright ©2024 Genuin Biotechnologies LLC

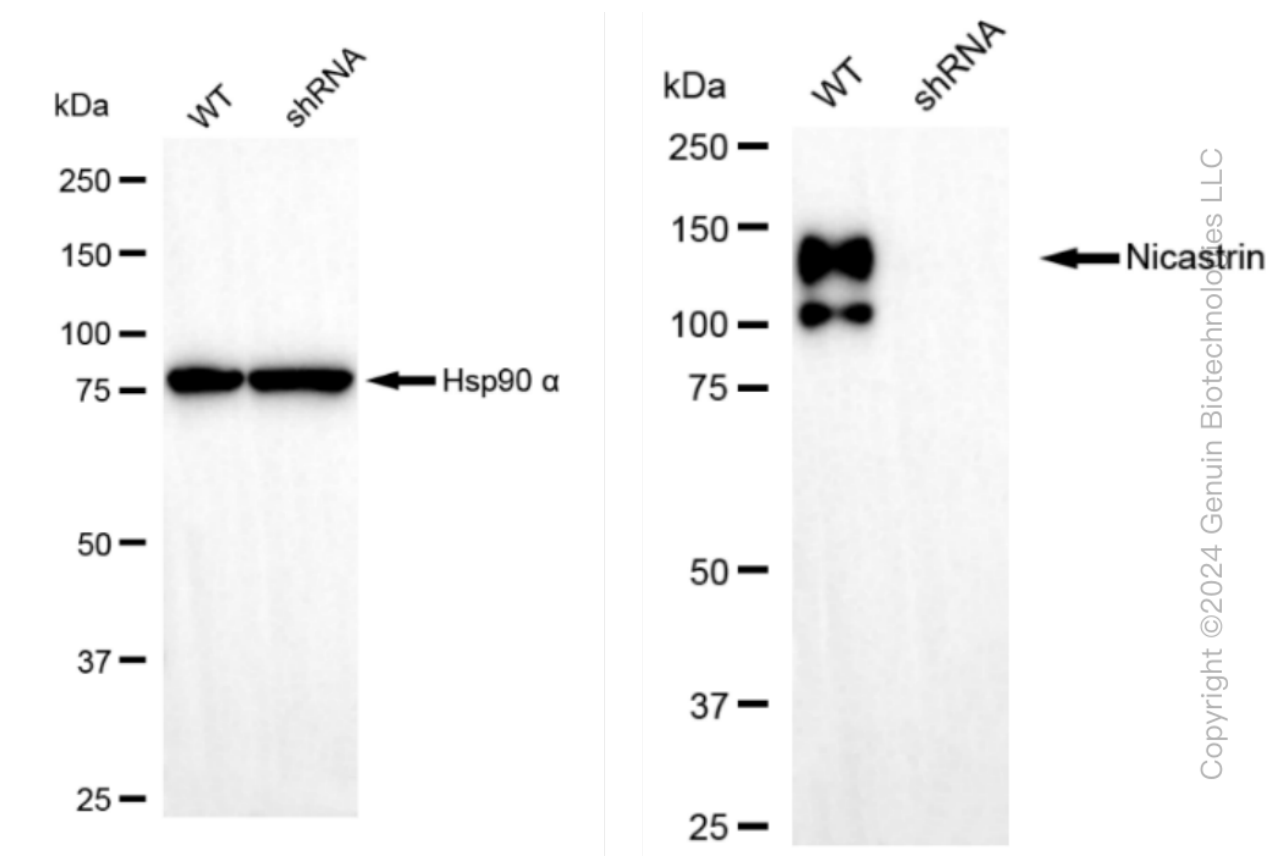
Flow cytometric analysis of Nicastrin expression in HepG2 cells using Nicastrin antibody (Cat#61775, 1:2,000). Green, isotype control; red, Nicastrin.



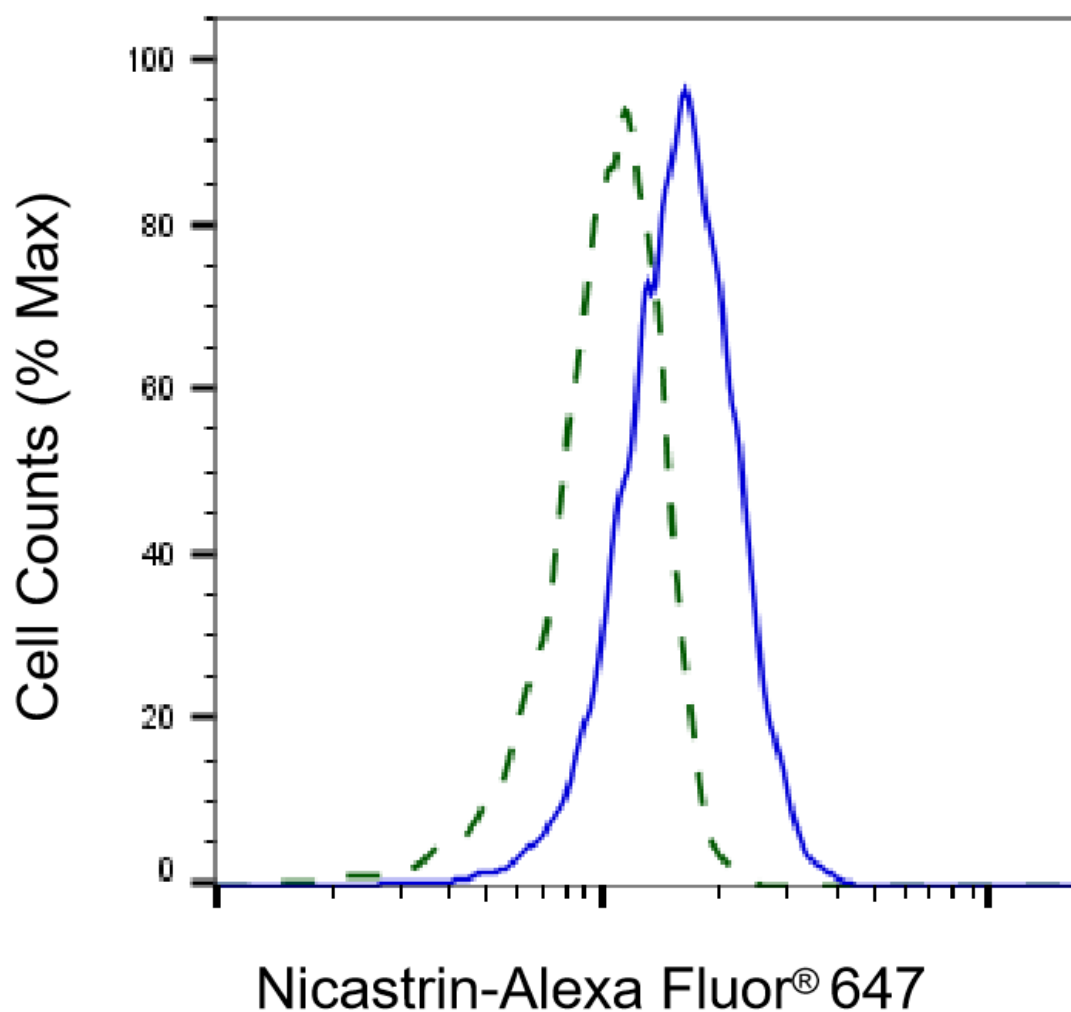
Immunocytochemical staining of HepG2 cells with Nicastrin antibody (Cat#61775, 1:1,000). Nuclei were stained blue with DAPI; Nicastrin was stained magenta with Alexa Fluor® 647. Images were taken using Leica stellaris 5. Protein abundance based on laser Intensity and smart gain: Medium. Scale bar: 20  $\mu$ m.



Western blotting analysis using anti-Nicastrin antibody (Cat#61775). Total cell lysates (30  $\mu$ g) from various cell lines were loaded and separated by SDS-PAGE. The blot was incubated with anti-Nicastrin antibody (Cat#61775, 1:5,000) and HRP-conjugated goat anti-rabbit secondary antibody (Cat#201, 1:20,000) respectively. Image was developed using FeQ™ ECL Substrate Kit (Cat#226).

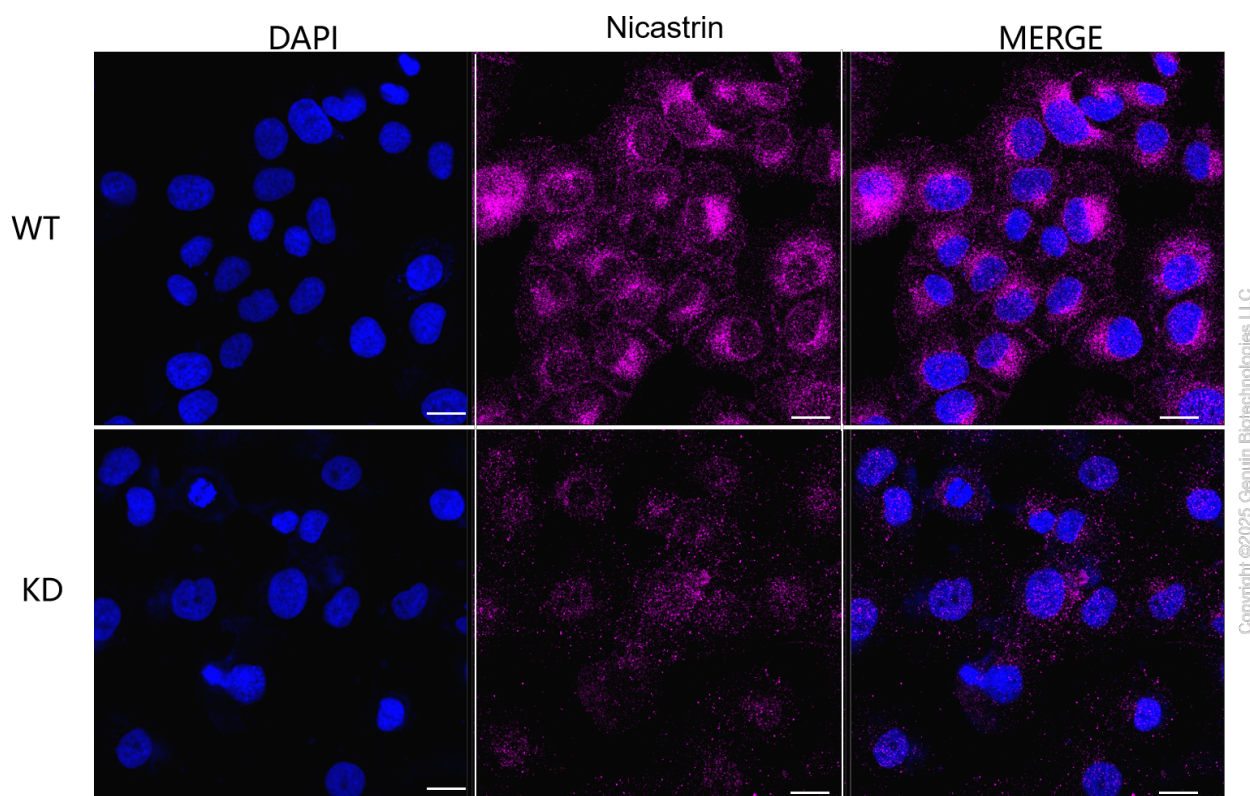


Western blotting analysis using anti-Nicastrin antibody (Cat#61775). Nicastrin expression in wild type (WT) and Nicastrin shRNA knockdown (KD) HT-1080 cells with 30 µg of total cell lysates. β-Tubulin serves as a loading control. The blot was incubated with anti-Nicastrin antibody (Cat#61775, 1:5,000) and HRP-conjugated goat anti-rabbit secondary antibody (Cat#201, 1:20,000) respectively. Image was developed using FeQ™ ECL Substrate Kit (Cat#226).



Copyright ©2025 Genuin Biotechnologies LLC

Validation of Nicastrin knockdown using flow cytometry. Wild-type(WT, Blue) and knockdown(KD, Green) HT1080 cells were stained with anti-Nicastrin antibody (Cat#61775, 1:2,000) and analyzed using BD flow cytometer.



Immunocytochemical staining of HT-1080 cells using anti-Nicastrin antibody (Cat#61775, 1:1,000), Top panel: wild-type (WT); Bottom panel: Nicastrin shRNA knockdown (KD). Nuclei were stained blue with DAPI; Nicastrin was stained magenta with Alexa Fluor® 647. Scale bar, 20  $\mu$ m. Permeabilization: Triton.