

KD-Validated Anti-CALCOCO2 Mouse Monoclonal Antibody



Catalog #: 61784

Aliases

CALCOCO2; Calcium Binding And Coiled-Coil Domain 2; NDP52; Calcium-Binding And Coiled-Coil Domain-Containing Protein 2; Antigen Nuclear Dot 52 KDa Protein; Nuclear Domain 10 Protein NDP52; Nuclear Domain 10 Protein 52; Nuclear Dot Protein 52; MGC17318

Background

Gene Name: CALCOCO2

NCBI Gene Entry: [10241](#)

UniProt Entry: [Q13137](#)

Application Information

Molecular Weight: Predicted, 52 kDa; observed, 52 kDa

Clonality: Mouse monoclonal antibody

Clone ID: 25GB3745

Species Reactivity: Human

Applications Tested: Western blotting (WB), flow cytometry (FCM), immunocytochemistry (IC)

Immunogen

Recombinant protein of human CALCOCO2

Isotype

Mouse IgG1

Storage Buffer

Supplied in PBS (pH 7.4) containing 50% glycerol, and 0.02% sodium azide.

Storage

Store at -20 °C for one year.

Recommended Dilutions

Western Blotting (WB): 1:500-1:2,500

Flow Cytometry (FCM): 1:2,000

Immunocytochemistry (IC): 1:100-1:1,000

Note: This product is for research use only.

SUPPORT

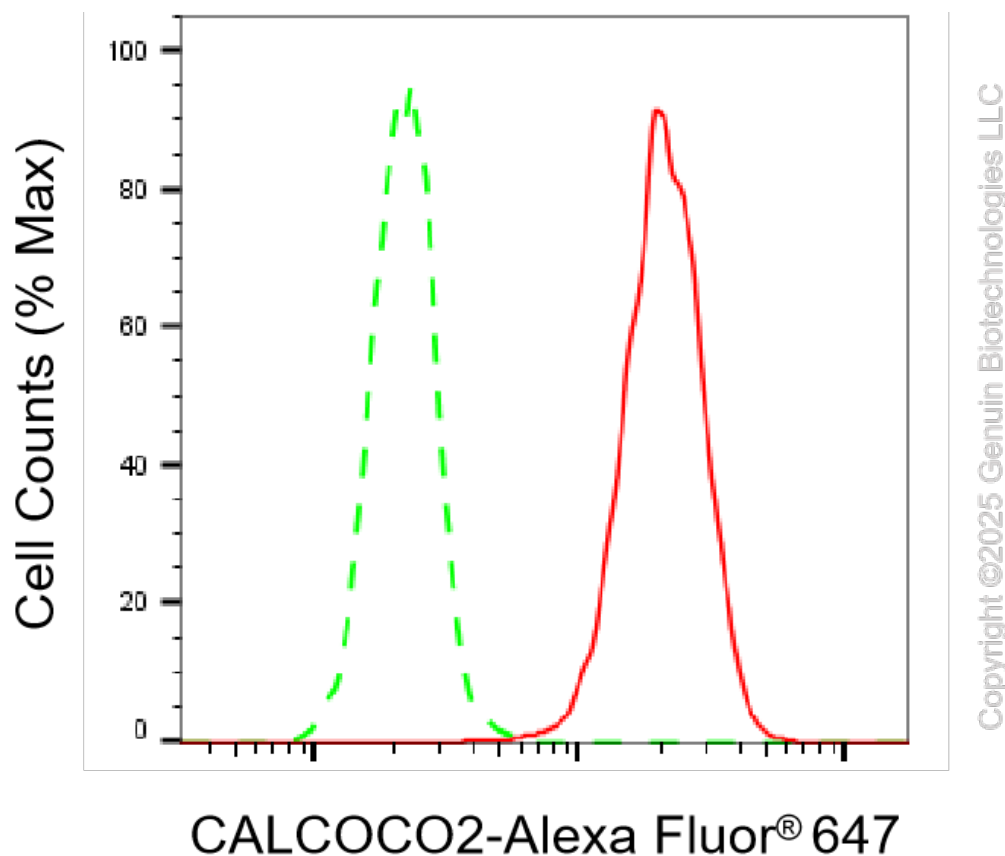
SUPPORT@GENUINBIOTECH.COM
TEL: +1-540-855-7041

ORDERS

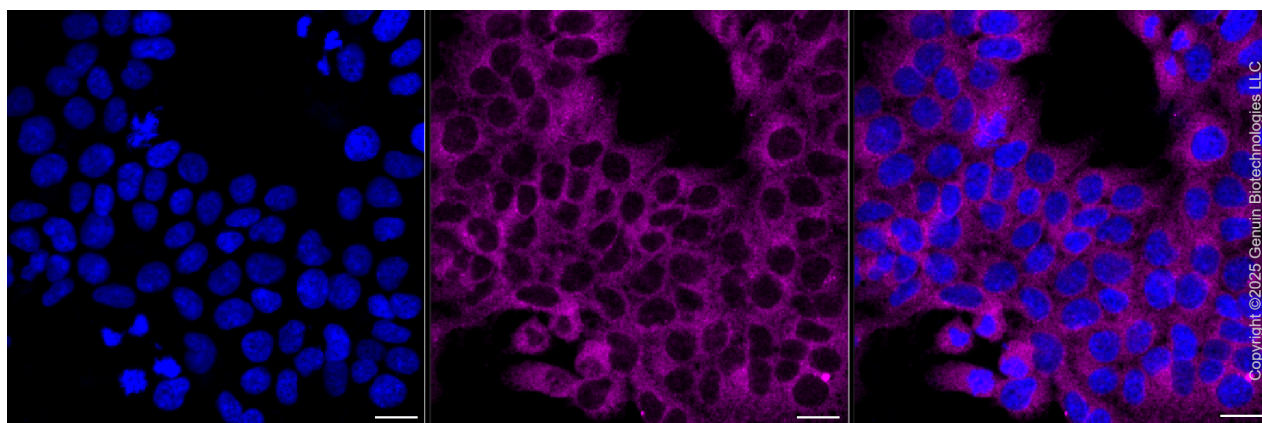
SALES@GENUINBIOTECH.COM
FAX: +1-540-855-7041

WWW.GENUINBIOTECH.COM

Validation Data



Flow cytometric analysis of C17orf58 expression in HT-1080 cells using anti-C17orf58 antibody (Cat#61840, 1:1,000). Green, isotype control; red, C17orf58.



Immunocytochemical staining of HT-1080 cells with anti-C17orf58 associated protein antibody (Cat#61840, 1:1,000). Nuclei were stained blue with DAPI; C17orf58 associated protein was stained magenta with Alexa Fluor® 647. Images were taken using Leica stellaris 5. Protein abundance based on laser Intensity and smart gain: Medium. Scale bar, 20 μ m.

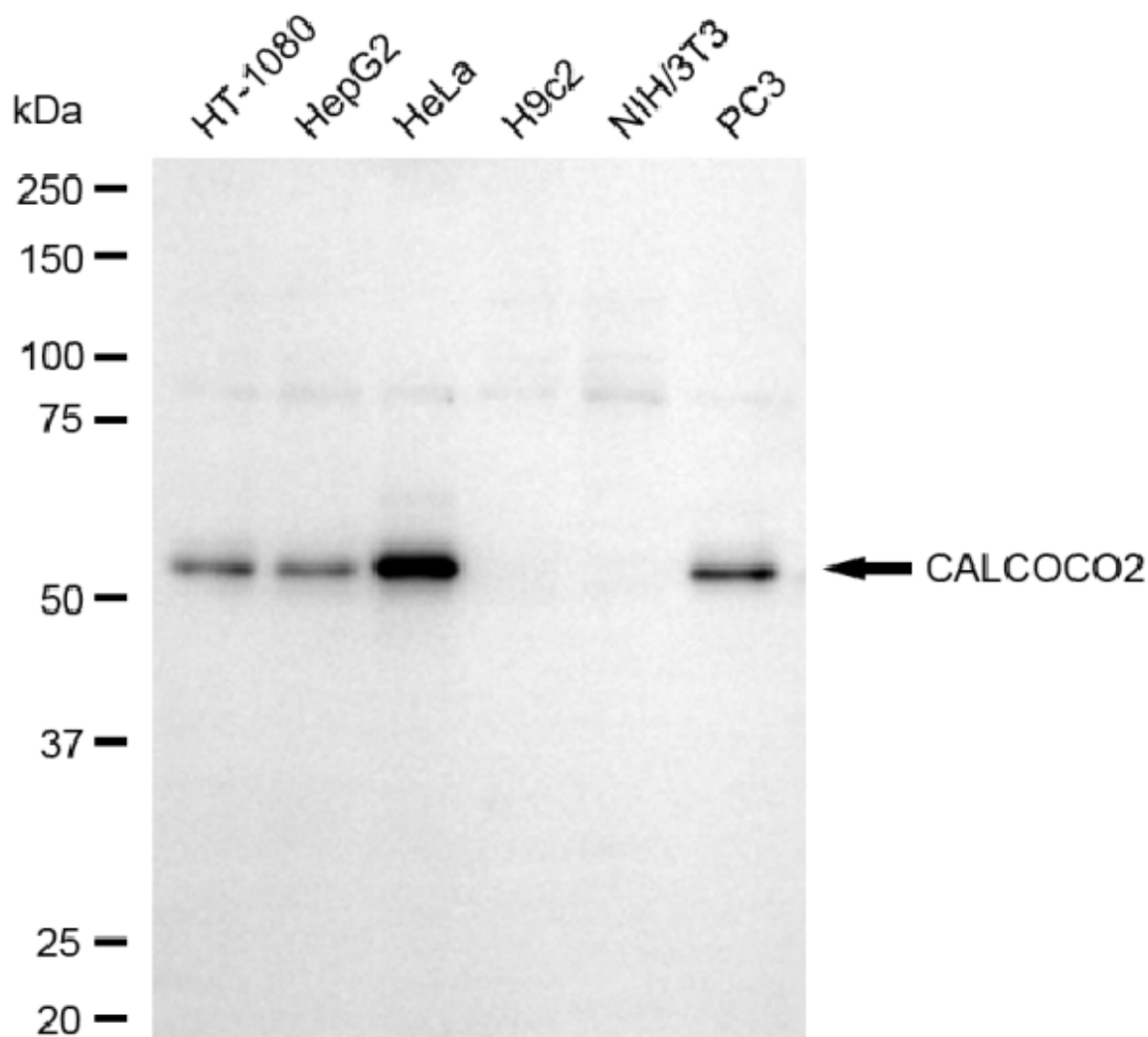
SUPPORT

SUPPORT@GENUINBIOTECH.COM
TEL: +1-540-855-7041

ORDERS

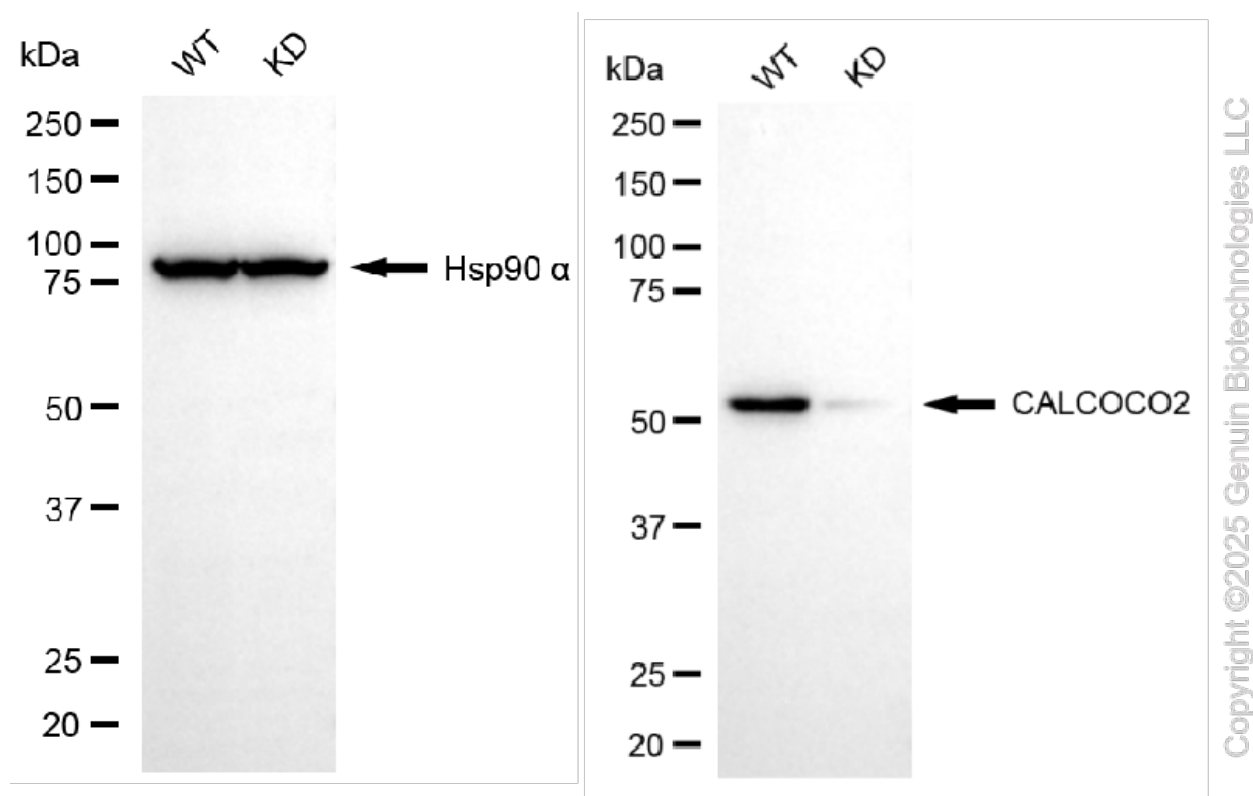
SALES@GENUINBIOTECH.COM
FAX: +1-540-855-7041

WWW.GENUINBIOTECH.COM



Copyright ©2025 Genuin Biotechnologies LLC

Western blotting analysis using anti-c17orf58 antibody (Cat#61840). Total cell lysates (30 µg) from various cell lines were loaded and separated by SDS-PAGE. The blot was incubated with anti-c17orf58 antibody (Cat#61840, 1:2,500) and HRP-conjugated goat anti-mouse secondary antibody (Cat#101, 1:20,000) respectively. Image was developed using FeQ™ ECL Substrate Kit (Cat#226).



Western blotting analysis using anti-C17orf58 antibody (Cat#61840). C17orf58 expression in wild type (WT) and C17orf58 shRNA knockdown (KD) HeLa cells with 20 µg of total cell lysates. Hsp90 α serves as a loading control. The blot was incubated with anti-C17orf58 antibody (Cat#61840, 1:5,000) and HRP-conjugated goat anti-mouse secondary antibody (Cat#101, 1:20,000) respectively. Image was developed using FeQTM ECL Substrate Kit (Cat#226).