

# KD-Validated Anti-ANAPC2 Mouse Monoclonal Antibody



**Catalog #: 61785**

## Aliases

ANAPC2; Anaphase Promoting Complex Subunit 2; APC2; KIAA1406; Anaphase-Promoting Complex Subunit 2; Cyclosome Subunit 2

## Background

Gene Name: ANAPC2

NCBI Gene Entry: [29882](#)

UniProt Entry: [Q9UJX6](#)

## Application Information

Molecular Weight: Predicted, 94 kDa; observed, 100 kDa

Clonality: Mouse monoclonal antibody

Clone ID: 25GB3750

Species Reactivity: Human, mouse, rat

Applications Tested: Western blotting (WB), flow cytometry (FCM)

## Immunogen

Recombinant protein of human ANAPC2

## Isotype

Mouse IgG1

## Storage Buffer

Supplied in PBS (pH 7.4) containing 50% glycerol, and 0.02% sodium azide.

## Storage

Store at -20 °C for one year.

## Recommended Dilutions

Western Blotting (WB): 1:500-1:2,500

Flow Cytometry (FCM): 1:2,000

**Note:** This product is for research use only.

## Validation Data

---

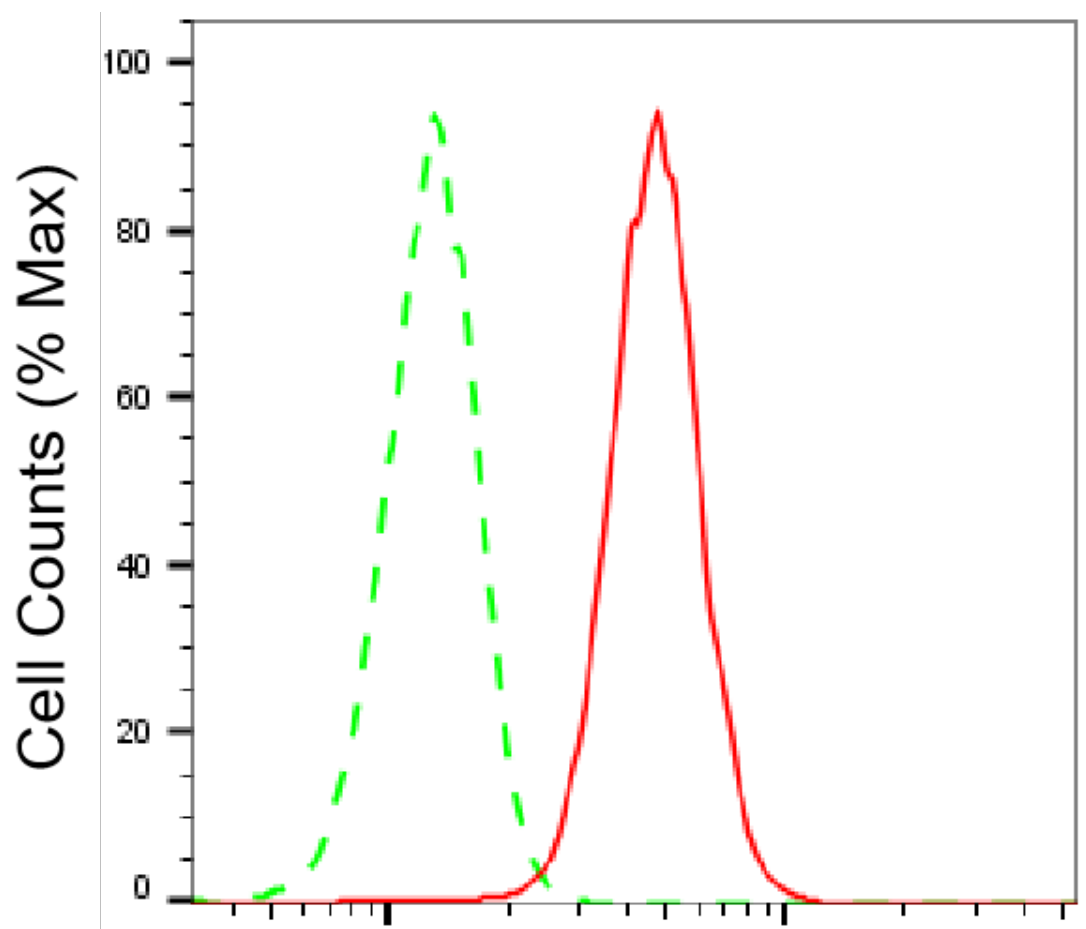
### SUPPORT

SUPPORT@GENUINBIOTECH.COM  
TEL: +1-540-855-7041

### ORDERS

SALES@GENUINBIOTECH.COM  
FAX: +1-540-855-7041

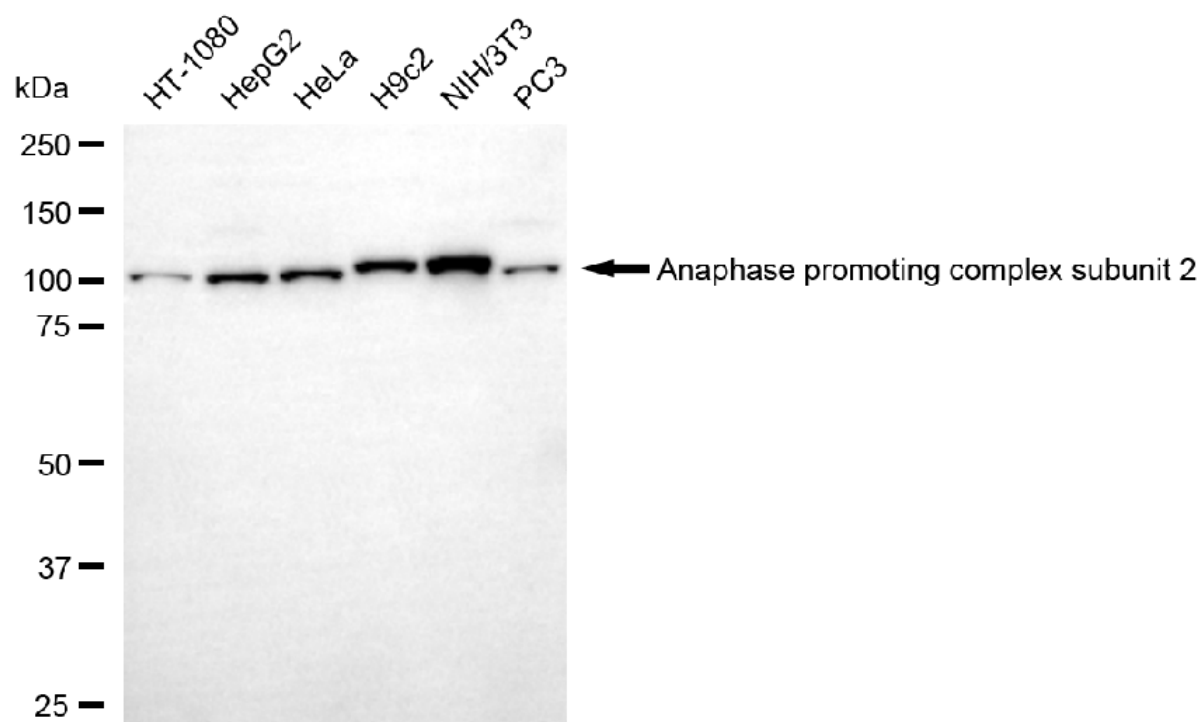
[WWW.GENUINBIOTECH.COM](http://WWW.GENUINBIOTECH.COM)



Copyright ©2025 Genuin Biotechnologies LLC

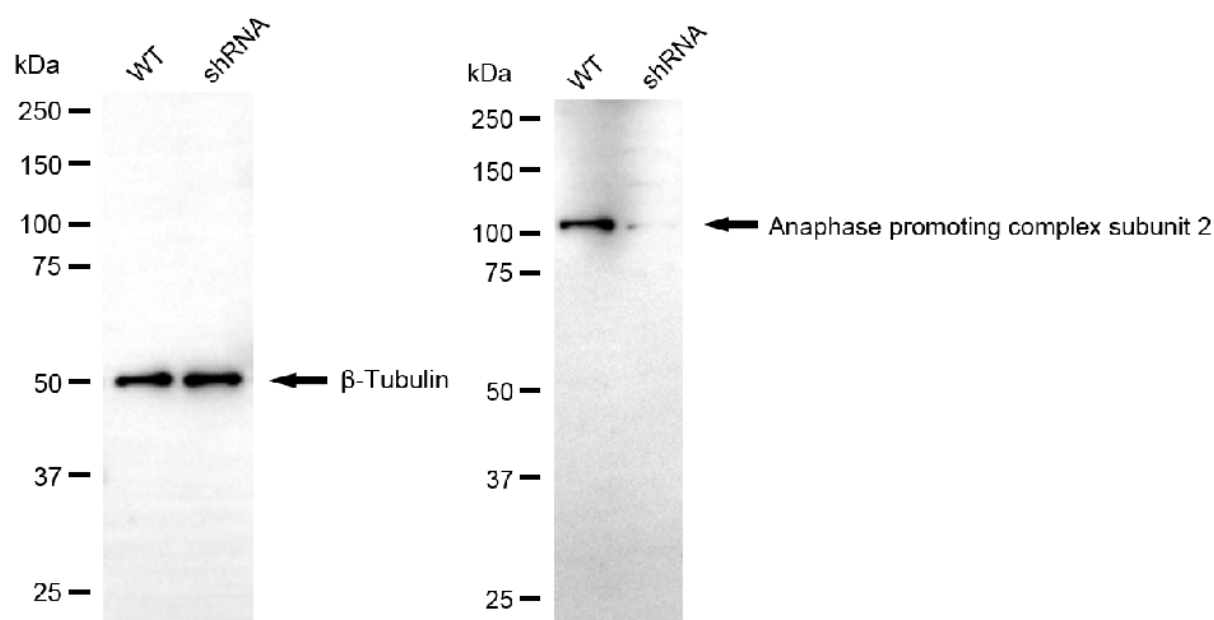
## Anaphase promoting complex subunit 2- Alexa Fluor® 647

Flow cytometric analysis of Anaphase promoting complex subunit 2 expression in C2C12 cells using anti-Anaphase promoting complex subunit 2 antibody (Cat#61785, 1:2,000). Green, isotype control; red, Anaphase promoting complex subunit 2.



Copyright ©2025 Genuin Biotechnologies LLC

Western blotting analysis using anti-anaphase promoting complex subunit 2 antibody (Cat#61785). Total cell lysates (30  $\mu$ g) from various cell lines were loaded and separated by SDS-PAGE. The blot was incubated with anti-anaphase promoting complex subunit 2 antibody (Cat#61785, 1:2,500) and HRP-conjugated goat anti-mouse secondary antibody (Cat#101, 1:20,000) respectively. Image was developed using FeQ™ ECL Substrate Kit (Cat#226).



Copyright ©2025 Genuin Biotechnologies LLC

Western blotting analysis using anti-anaphase promoting complex subunit 2 antibody (Cat#61785). Anaphase promoting complex subunit 2 expression in wild type (WT) and anaphase promoting complex subunit 2 (ANAPC2) shRNA knockdown (KD) HeLa cells with 20  $\mu$ g of total

## **KD-Validated Anti-ANAPC2 Mouse Monoclonal Antibody**

PAGE 4

cell lysates.  $\beta$ -Tubulin serves as a loading control. The blot was incubated with anti-anaphase promoting complex subunit 2 antibody (Cat#61785, 1:5,000) and HRP-conjugated goat anti-mouse secondary antibody (Cat#101, 1:20,000) respectively. Image was developed using FeQ™ ECL Substrate Kit (Cat#226).

---

### **SUPPORT**

SUPPORT@GENUINBIOTECH.COM  
TEL: +1-540-855-7041

### **ORDERS**

SALES@GENUINBIOTECH.COM  
FAX: +1-540-855-7041

**WWW.GENUINBIOTECH.COM**