

KD-Validated Anti-ALG2 Mouse Monoclonal Antibody



Catalog #: 61787

Aliases

ALG2; ALG2 Alpha-1,3/1,6-Mannosyltransferase; HALPG2; CDGLi; NET38; CDG1I; Asparagine-Linked Glycosylation 2 Homolog (Yeast, Alpha-1,3-Mannosyltransferase); GDP-Man:Man(1)GlcNAc(2)-PP-Dol Alpha-1,3-Mannosyltransferase; GDP-Man:Man(2)GlcNAc(2)-PP-Dol Alpha-1,6-Mannosyltransferase; GDP-Man:Man(1)GlcNAc(2)-PP-Dolichol Mannosyltransferase; Asparagine-Linked Glycosylation Protein 2 Homolog; Alpha-1,3/1,6-Mannosyltransferase ALG2; FLJ14511; Asparagine-Linked Glycosylation 2, Alpha-1,3-Mannosyltransferase Homolog (S. Cerevisiae); Asparagine-Linked Glycosylation 2 Homolog (S. Cerevisiae, Alpha-1,3-Mannosyltransferase); Asparagine-Linked Glycosylation 2, Alpha-1,3-Mannosyltransferase Homolog; Alpha-1,3-Mannosyltransferase ALG2; Homolog Of Yeast ALG2; EC 2.4.1.132; EC 2.4.1.257; EC 2.4.1; CMSTA3; CMS14

Background

NCBI Gene Entry: [85365](#)

UniProt Entry: [Q9H553](#)

Application Information

Molecular Weight: Predicted, 47 kDa; observed, 49 kDa

Clonality: Mouse monoclonal antibody

Clone ID: 25GB3760

Species Reactivity: Human

Applications Tested: Western blotting (WB), immunocytochemistry (IC)

Immunogen

Recombinant protein of human ALG2

Isotype

Mouse IgG1

Storage Buffer

Supplied in PBS (pH 7.4) containing 50% glycerol, and 0.02% sodium azide.

Storage

Store at -20 °C for one year.

Recommended Dilutions

SUPPORT

SUPPORT@GENUINBIOTECH.COM
TEL: +1-540-855-7041

ORDERS

SALES@GENUINBIOTECH.COM
FAX: +1-540-855-7041

WWW.GENUINBIOTECH.COM

KD-Validated Anti-ALG2 Mouse Monoclonal Antibody

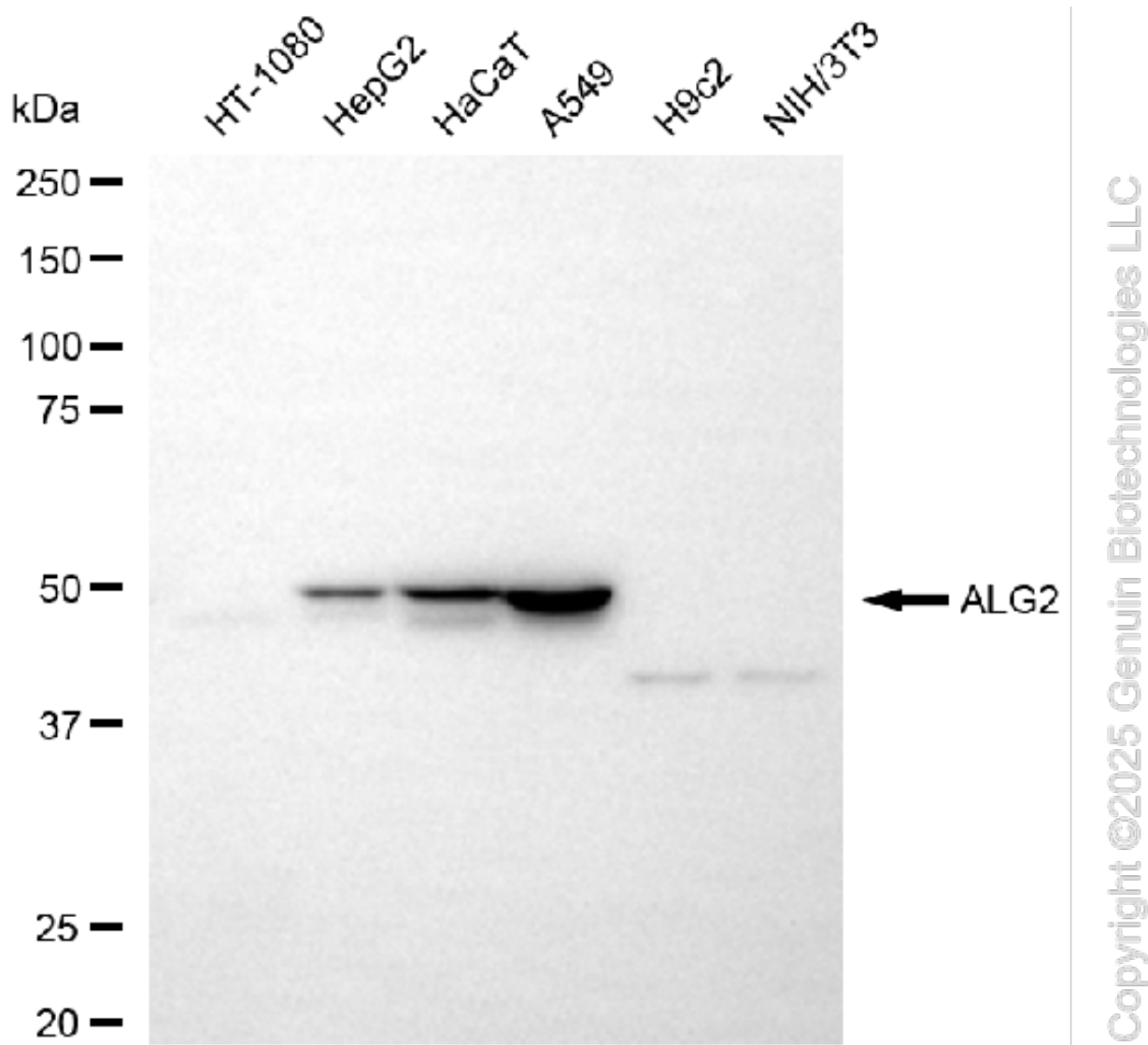
PAGE 2

Western Blotting (WB): 1:200-1:1,000

Immunocytochemistry (IC): 1:100-1:1,000

Note: This product is for research use only.

Validation Data



Western blotting analysis using anti-ALG2 antibody (Cat#61787). Total cell lysates (30 µg) from various cell lines were loaded and separated by SDS-PAGE. The blot was incubated with anti-ALG2 antibody (Cat#61787, 1:1,000) and HRP-conjugated goat anti-mouse secondary antibody (Cat#101, 1:20,000) respectively. Image was developed using NaQ™ ECL Substrate Kit (Cat#716).

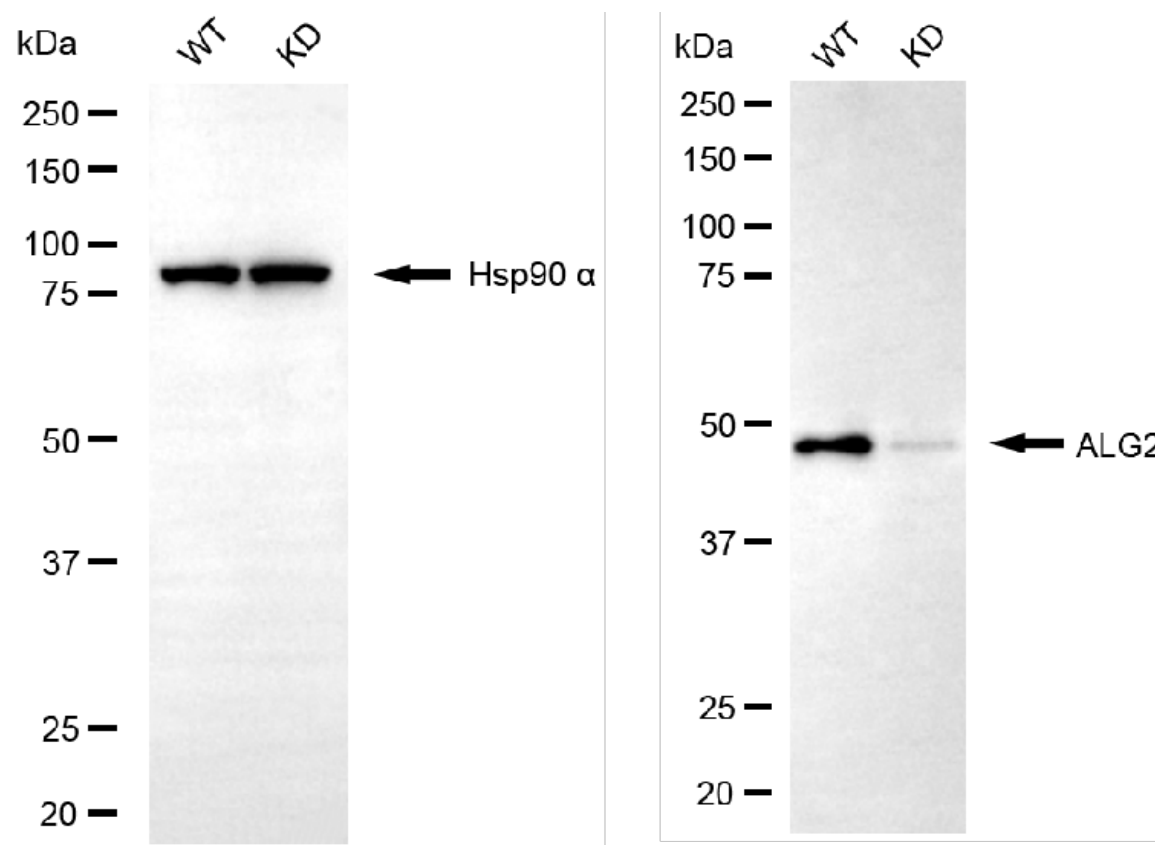
SUPPORT

SUPPORT@GENUINBIOTECH.COM
TEL: +1-540-855-7041

ORDERS

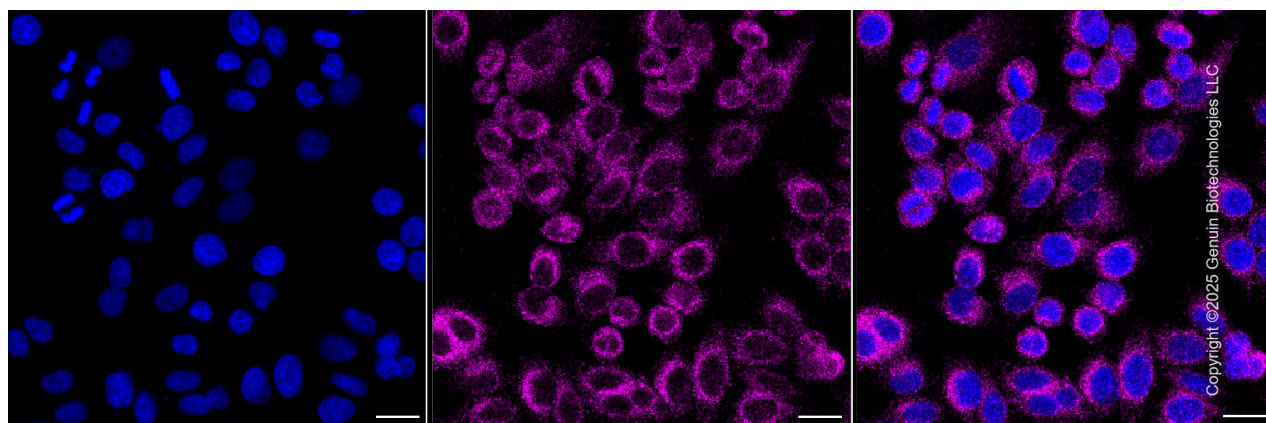
SALES@GENUINBIOTECH.COM
FAX: +1-540-855-7041

WWW.GENUINBIOTECH.COM



Copyright ©2025 Genuin Biotechnologies LLC

Western blotting analysis using anti-ALG2 antibody (Cat#61787). ALG2 expression in wild-type (WT) and ALG2 knockdown (KD) HT-1080 cells with 20 µg of total cell lysates. Hsp90 α serves as a loading control. The blot was incubated with anti-ALG2 antibody (Cat#61787, 1:2,500) and HRP-conjugated goat anti-mouse secondary antibody (Cat#101, 1:20,000) respectively. Image was developed using FeQ™ ECL Substrate Kit (Cat#226).



Copyright ©2025 Genuin Biotechnologies LLC

Immunocytochemical staining of HepG2 cells with anti-ALG2 antibody (Cat#61787, 1:1000) . Nuclei were stained blue with DAPI; ALG2 was stained magenta with Alexa Fluor® 647. Images were taken using Leica stellaris 5. Protein abundance based on laser Intensity and Smart Gain □ Medium. Scale bar, 20 µm.

SUPPORT

SUPPORT@GENUINBIOTECH.COM
TEL: +1-540-855-7041

ORDERS

SALES@GENUINBIOTECH.COM
FAX: +1-540-855-7041

WWW.GENUINBIOTECH.COM