

KD-Validated Anti-HAUS7 Recombinant Rabbit Monoclonal Antibody



Catalog #: 61792

Aliases

HAUS7; HAUS Augmin Like Complex Subunit 7; UIP1; UCHL5IP; 26S Proteasome-Associated UCH37-Interacting Protein 1; HAUS Augmin-Like Complex Subunit 7; X-Linked Protein STS1769; 26S Proteasome-Associated UCH Interacting Protein 1; UCH37 Interacting Protein 1; UCHL5 Interacting Protein; UCHL5-Interacting Protein

Background

Gene Name: HAUS7

NCBI Gene Entry: [55559](#)

UniProt Entry: [Q99871](#)

Application Information

Molecular Weight: Predicted, 40 kDa, observed, 37 kDa

Clonality: Rabbit monoclonal antibody

Clone ID: 23GB4485

Species Reactivity: Human

Applications Tested: Western blotting (WB), flow cytometry (FCM), immunocytochemistry (IC)

Immunogen

A synthesized peptide derived from human UCHL5IP

Isotype

Rabbit IgG

Storage Buffer

Supplied in PBS (pH 7.4) containing 50% glycerol, and 0.02% sodium azide.

Storage

Store at -20 °C for one year.

Recommended Dilutions

Western Blotting (WB): 1:1,000-1:5,000

Flow Cytometry (FCM): 1:2,000

Immunocytochemistry (IC): 1:100-1:1,000

SUPPORT

SUPPORT@GENUINBIOTECH.COM
TEL: +1-540-855-7041

ORDERS

SALES@GENUINBIOTECH.COM
FAX: +1-540-855-7041

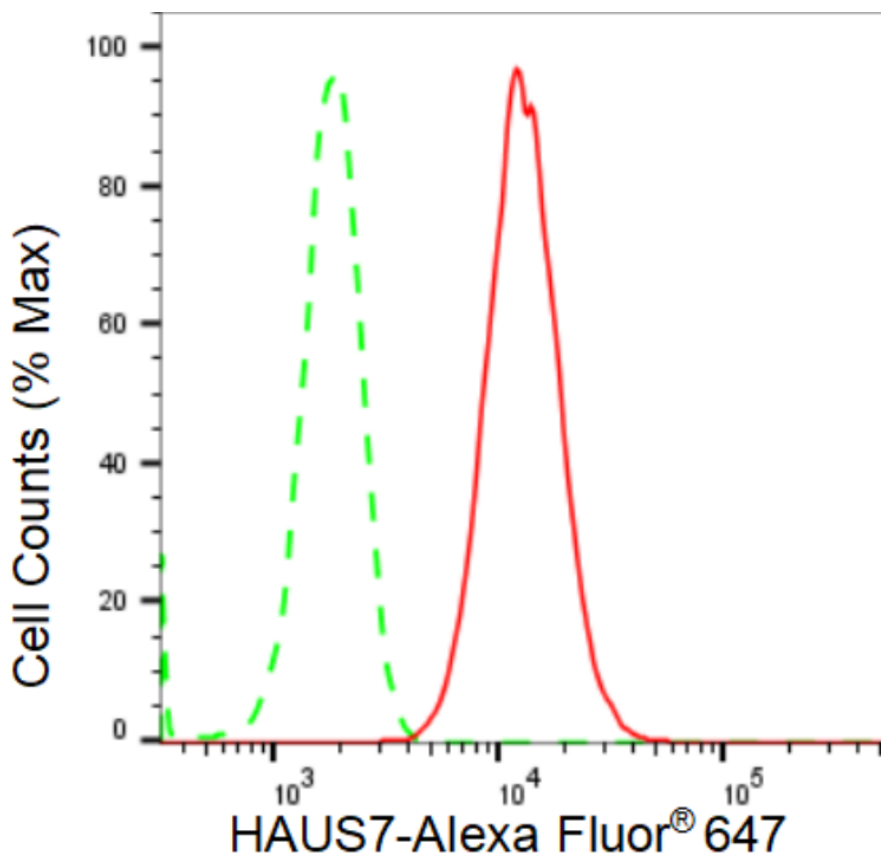
WWW.GENUINBIOTECH.COM

KD-Validated Anti-HAUS7 Recombinant Rabbit Monoclonal Antibody

PAGE 2

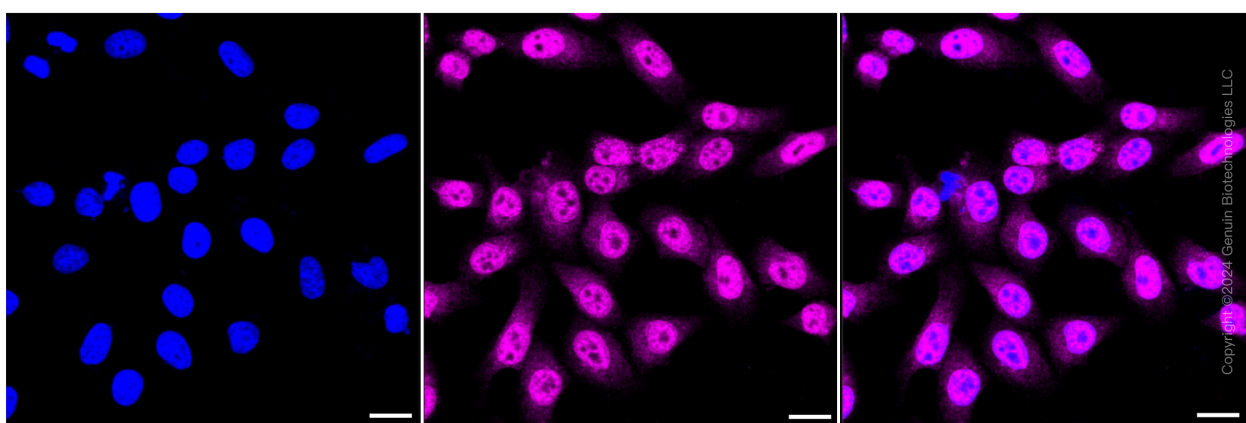
Note: This product is for research use only.

Validation Data



Copyright ©2024 Genuin Biotechnologies LLC

Flow cytometric analysis of HAUS7 expression in HepG2 cells using HAUS7 antibody (Cat#61792, 1:2,000). Green, isotype control; red, HAUS7.



Copyright ©2024 Genuin Biotechnologies LLC

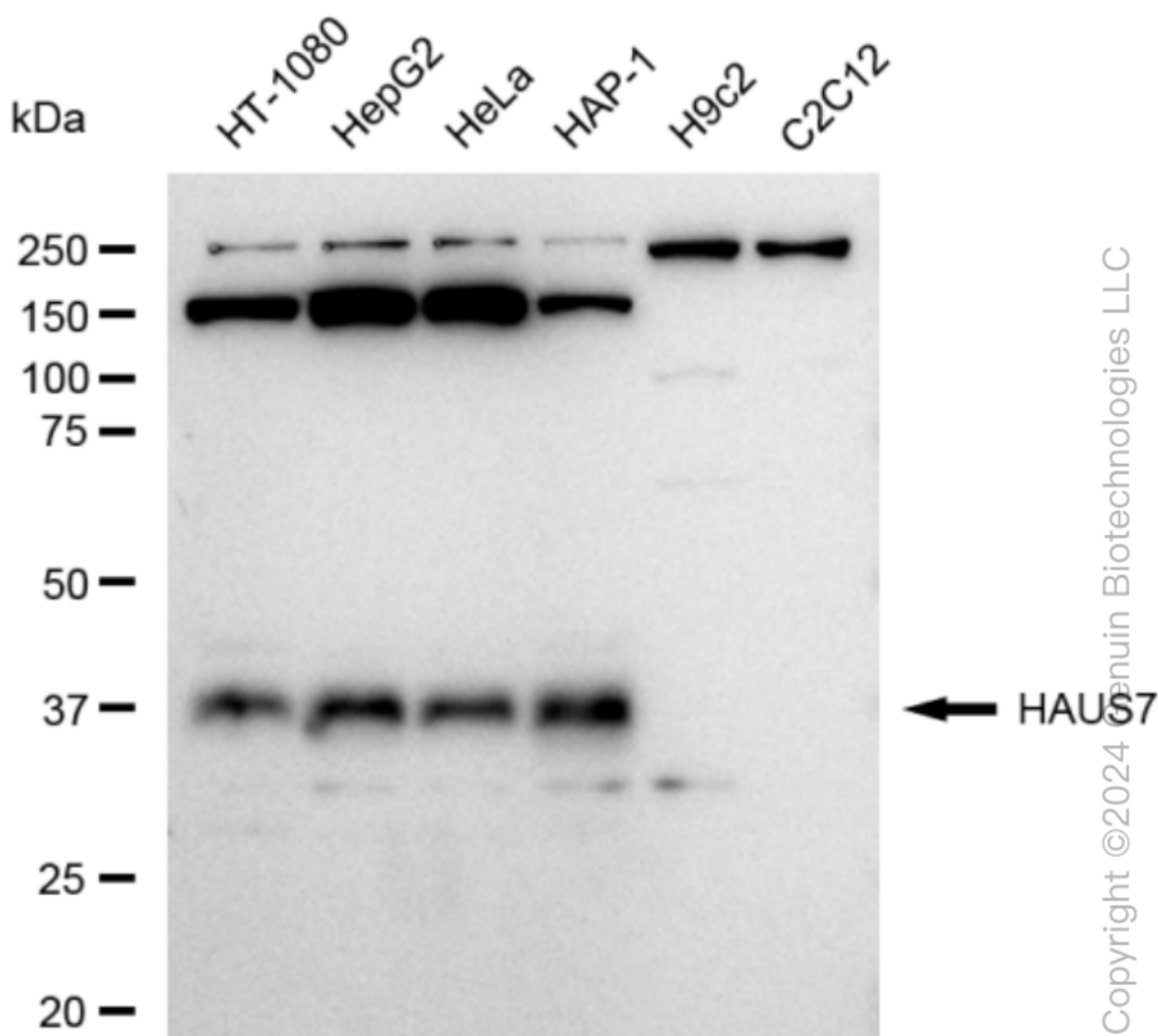
SUPPORT

SUPPORT@GENUINBIOTECH.COM
TEL: +1-540-855-7041

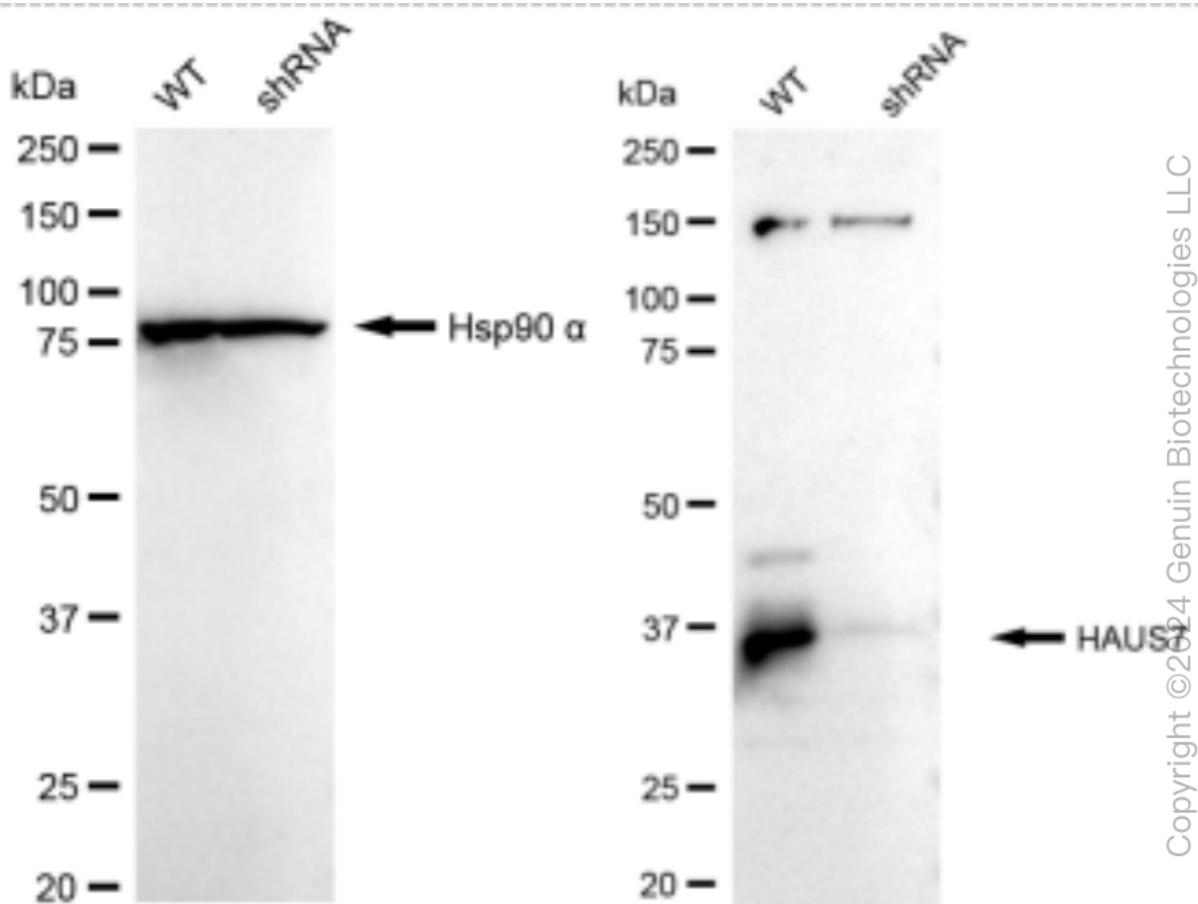
ORDERS

SALES@GENUINBIOTECH.COM
FAX: +1-540-855-7041

WWW.GENUINBIOTECH.COM



Western blotting analysis using anti-HAUS7 antibody (Cat#61792). Total cell lysates (30 μ g) from various cell lines were loaded and separated by SDS-PAGE. The blot was incubated with anti-HAUS7 antibody (Cat#61792, 1:5,000) and HRP-conjugated goat anti-rabbit secondary antibody (Cat#201, 1:20,000) respectively. Image was developed using FeQ™ ECL Substrate Kit (Cat#226).



Western blotting analysis using anti-HAUS7 antibody (Cat#61792). HAUS7 expression in wild type (WT) and HAUS7 shRNA knockdown (KD) HeLa cells with 30 µg of total cell lysates. Hsp90 α serves as a loading control. The blot was incubated with anti-HAUS7 antibody (Cat#61792, 1:5,000) and HRP-conjugated goat anti-rabbit secondary antibody (Cat#201, 1:20,000) respectively. Image was developed using FeQ™ ECL Substrate Kit (Cat#226).