

# KD-Validated Anti-High mobility group box 2 Recombinant Rabbit Monoclonal Antibody



**Catalog #: 61793**

## Aliases

HMGB2; High Mobility Group Box 2; HMG2; High-Mobility Group (Nonhistone Chromosomal) Protein 2; High Mobility Group Protein B2; High Mobility Group Protein 2; HMG-2; High-Mobility Group Box 2

## Background

Gene Name: HMGB2

NCBI Gene Entry: [3148](#)

UniProt Entry: [P26583](#)

## Application Information

Molecular Weight: Predicted, 24 kDa, observed, 24 kDa

Clonality: Rabbit monoclonal antibody

Clone ID: 23GB4490

Species Reactivity: Human, mouse, rat

Applications Tested: Western blotting (WB), flow cytometry (FCM), immunocytochemistry (IC)

## Immunogen

A synthesized peptide derived from human HMGB2

## Isotype

Rabbit IgG

## Storage Buffer

Supplied in PBS (pH 7.4) containing 50% glycerol, and 0.02% sodium azide.

## Storage

Store at -20 °C for one year.

## Recommended Dilutions

Western Blotting (WB): 1:1,000-1:5,000

Flow Cytometry (FCM): 1:2,000

Immunocytochemistry (IC): 1:100-1:1,000

**Note:** This product is for research use only.

---

### SUPPORT

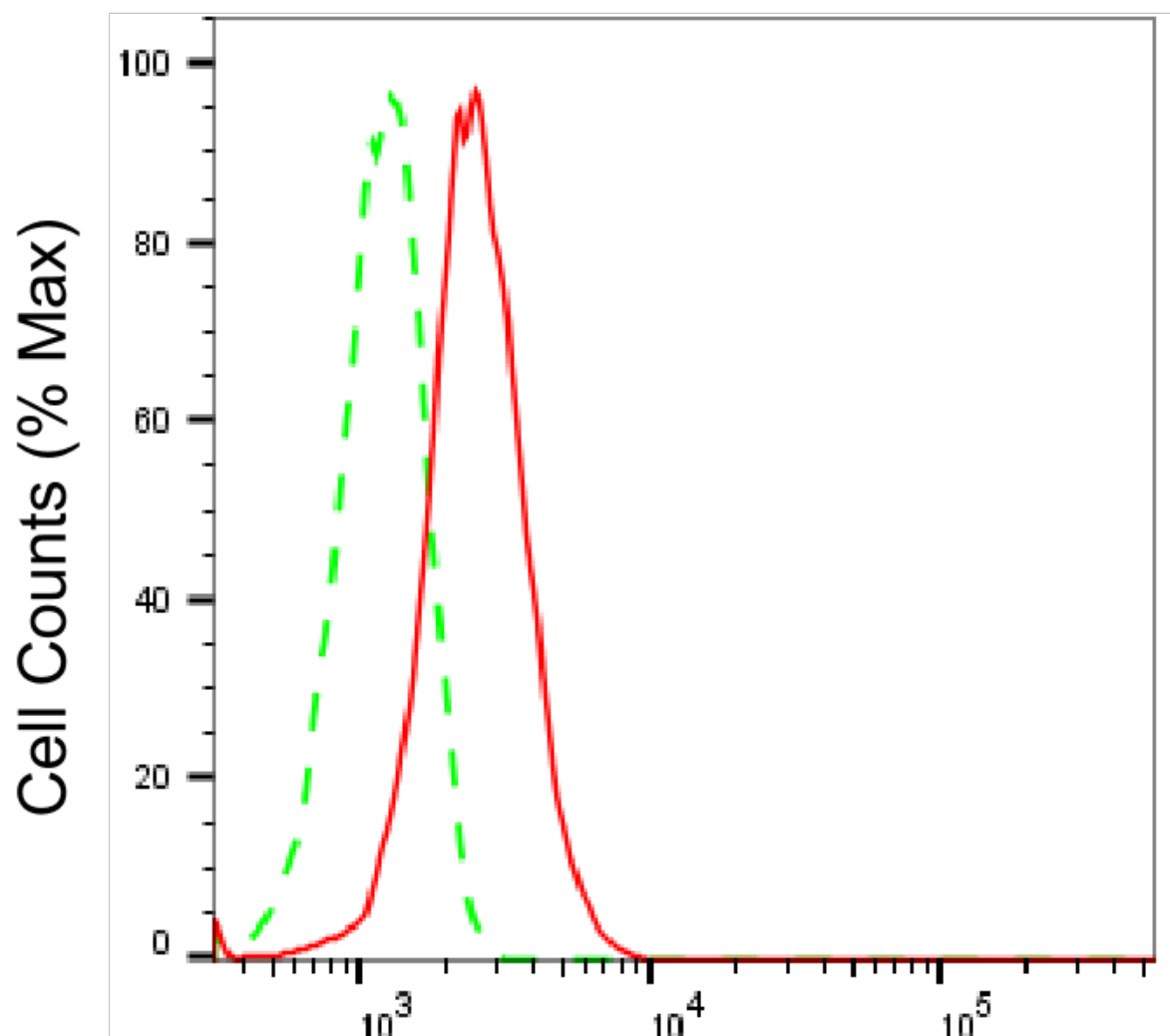
SUPPORT@GENUINBIOTECH.COM  
TEL: +1-540-855-7041

### ORDERS

SALES@GENUINBIOTECH.COM  
FAX: +1-540-855-7041

[WWW.GENUINBIOTECH.COM](http://WWW.GENUINBIOTECH.COM)

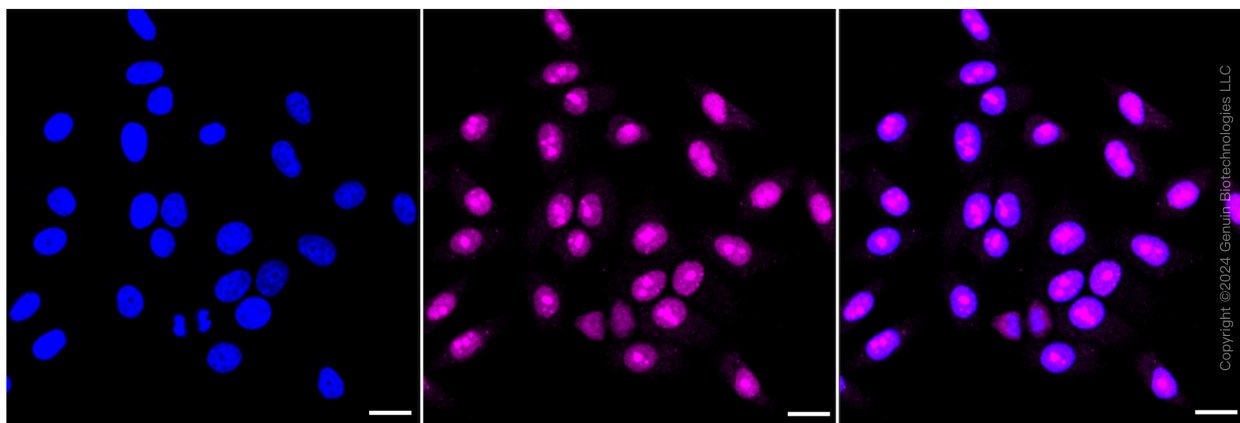
**Validation Data**



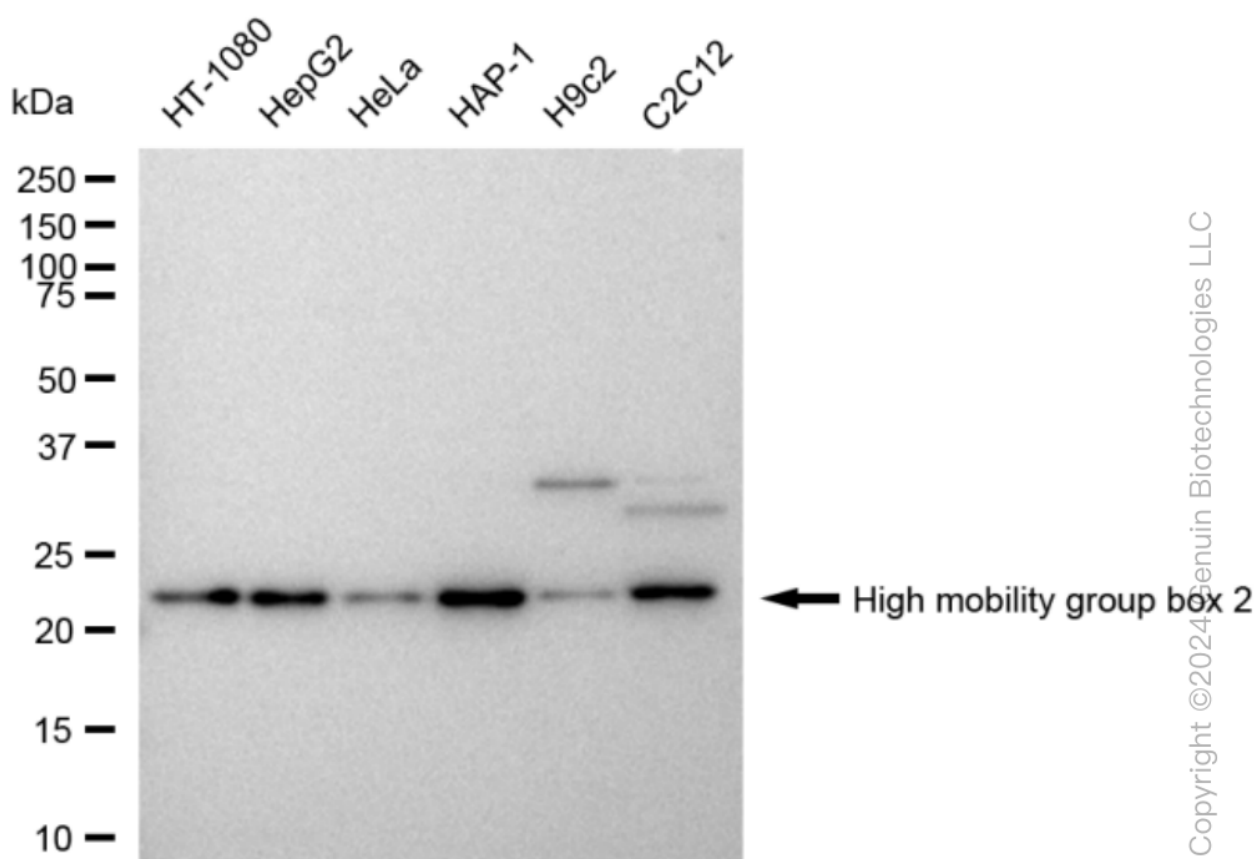
Copyright ©2025 Genuin Biotechnologies LLC

## High mobility group box 2-Alexa Fluor® 647

Flow cytometric analysis of High mobility group box 2 expression in HepG2 cells using anti-High mobility group box 2 antibody (Cat#61793, 1  $\mu$ g/2000). Green, isotype control; red, High mobility group box 2.



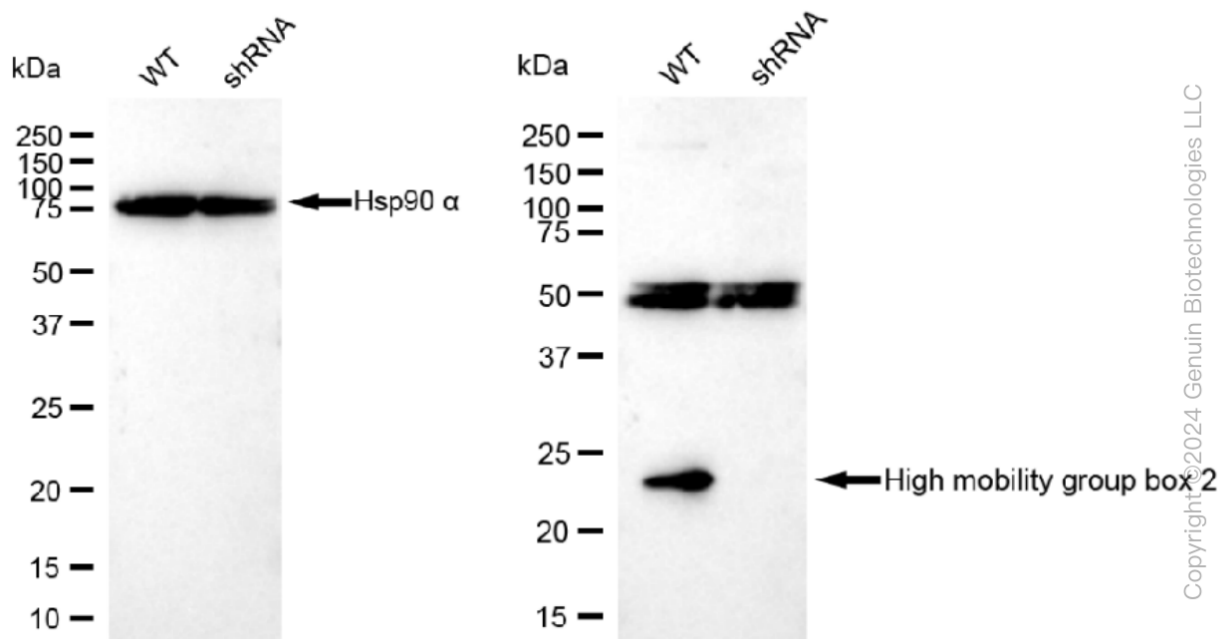
Immunocytochemical staining of HepG2 cells with High mobility group box 2 antibody (Cat#61793, 1:1,000). Nuclei were stained blue with DAPI; High mobility group box 2 was stained magenta with Alexa Fluor® 647. Images were taken using Leica stellaris 5. Protein abundance based on laser Intensity and smart gain: Medium. Scale bar: 20 µm.



Western blotting analysis using anti-High mobility group box 2 antibody (Cat#61793). Total cell lysates (30 µg) from various cell lines were loaded and separated by SDS-PAGE. The blot was incubated with anti-High mobility group box 2 antibody (Cat#61793, 1:5,000) and HRP-conjugated goat anti-rabbit secondary antibody (Cat#201, 1:20,000) respectively. Image was developed using FeQ™ ECL Substrate Kit (Cat#226).

## KD-Validated Anti-High mobility group box 2 Recombinant Rabbit Monoclonal Antibody

PAGE 4



Western blotting analysis using anti-High mobility group box 2 antibody (Cat#61793). High mobility group box 2 expression in wild type (WT) and High mobility group box 2 shRNA knockdown (KD) HT-1080 cells with 30 µg of total cell lysates. Hsp90 α serves as a loading control. The blot was incubated with anti-High mobility group box 2 antibody (Cat#61793, 1:5,000) and HRP-conjugated goat anti-rabbit secondary antibody (Cat#201, 1:20,000) respectively. Image was developed using FeQ™ ECL Substrate Kit (Cat#226).

### SUPPORT

SUPPORT@GENUINBIOTECH.COM  
TEL: +1-540-855-7041

### ORDERS

SALES@GENUINBIOTECH.COM  
FAX: +1-540-855-7041

[WWW.GENUINBIOTECH.COM](http://WWW.GENUINBIOTECH.COM)