

KD-Validated Anti-ABCF2 Mouse Monoclonal Antibody



Catalog #: 61796

Aliases

ABCF2; ATP Binding Cassette Subfamily F Member 2; EST133090; HUSSY-18; ABC28; ATP-Binding Cassette, Sub-Family F (GCN20), Member 2; ATP-Binding Cassette Sub-Family F Member 2; Iron-Inhibited ABC Transporter 2; M-ABC1; ABC-Type Transport Protein; EC 3.6.3.17; EC 3.6.3; HUSSY18

Background

Gene Name: ABCF2

NCBI Gene Entry: [10061](#)

UniProt Entry: [Q9UG63](#)

Application Information

Molecular Weight: Predicted, 71 kDa; observed, 71 kDa

Clonality: Mouse monoclonal antibody

Clone ID: 25GB3795

Species Reactivity: Human, mouse, rat

Applications Tested: Western blotting (WB), immunocytochemistry (IC)

Immunogen

Recombinant protein of human ABCF2

Isotype

Mouse IgG2b

Storage Buffer

Supplied in PBS (pH 7.4) containing 50% glycerol, and 0.02% sodium azide.

Storage

Store at -20 °C for one year.

Recommended Dilutions

Western blotting (WB): 1:500-1:2,500

Immunocytochemistry (IC): 1:100-1:1,000

Note: This product is for research use only.

SUPPORT

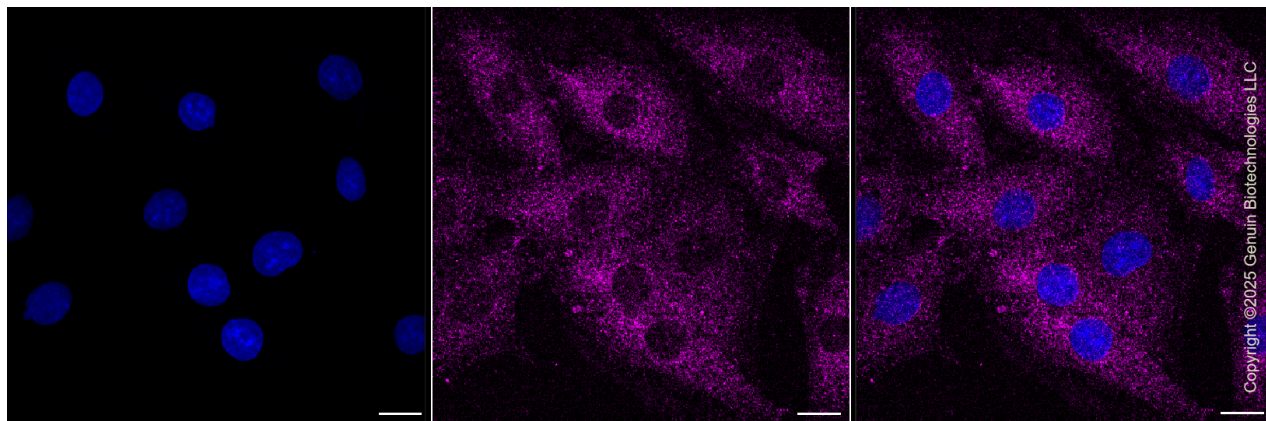
SUPPORT@GENUINBIOTECH.COM
TEL: +1-540-855-7041

ORDERS

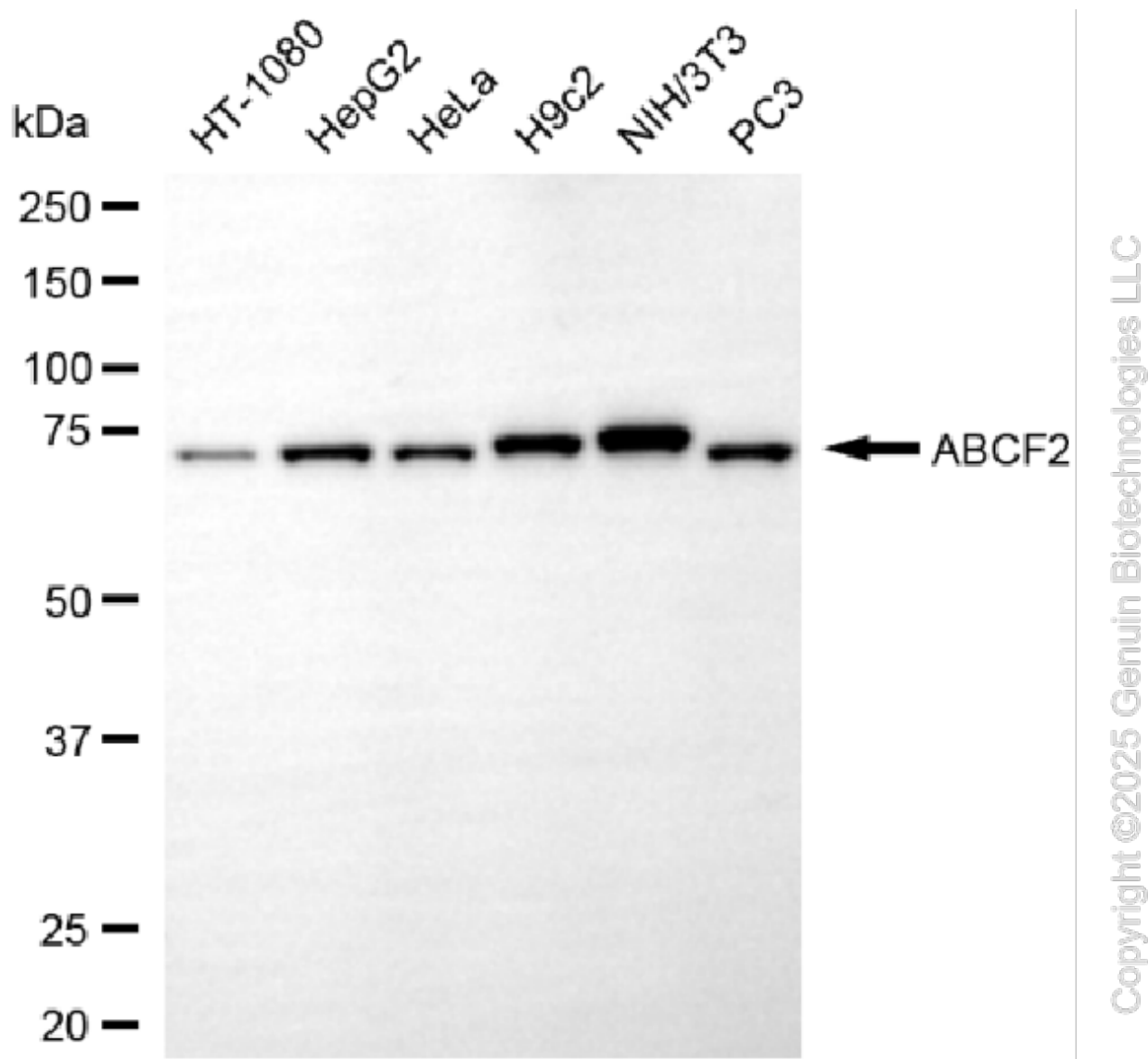
SALES@GENUINBIOTECH.COM
FAX: +1-540-855-7041

WWW.GENUINBIOTECH.COM

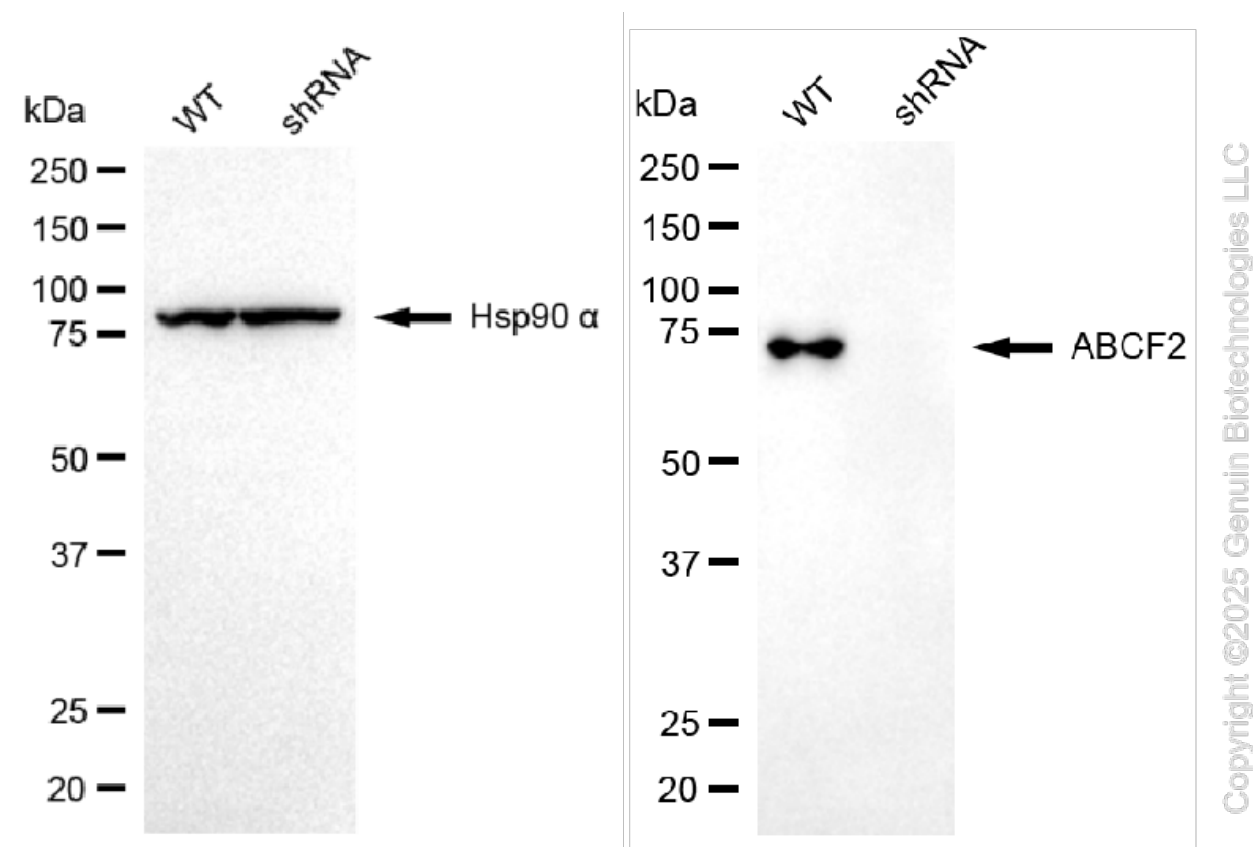
Validation Data



Immunocytochemical staining of H9C2 cells with anti-ABCF2 antibody (Cat#61796, 1:1,000). Nuclei were stained blue with DAPI; ABCF2 was stained magenta with Alexa Fluor® 647. Images were taken using Leica stellaris 5. Protein abundance based on laser Intensity and smart gain: Medium. Scale bar, 20 μ m.



Western blotting analysis using anti-ABCF2 antibody (Cat#61796). Total cell lysates (30 µg) from various cell lines were loaded and separated by SDS-PAGE. The blot was incubated with anti-ABCF2 antibody (Cat#61796, 1:2,500) and HRP-conjugated goat anti-mouse secondary antibody (Cat#101, 1:20,000) respectively. Image was developed using FeQ™ ECL Substrate Kit (Cat#226).



Western blotting analysis using anti-ABCF2 antibody (Cat#61796). ABCF2 expression in wild type (WT) and ABCF2 shRNA knockdown (KD) HeLa cells with 20 μ g of total cell lysates. Hsp90 α serves as a loading control. The blot was incubated with anti-ABCF2 antibody (Cat#61796, 1:5,000) and HRP-conjugated goat anti-mouse secondary antibody (Cat#101, 1:20,000) respectively. Image was developed using FeQ™ ECL Substrate Kit (Cat#226).