

KD-Validated Anti-ERK1/2 Recombinant Rabbit Monoclonal Antibody



Catalog #: 61797

Aliases

MAPK3; Mitogen-Activated Protein Kinase 3; ERK1; PRKM3; Extracellular Signal-Regulated Kinase 1; Microtubule-Associated Protein 2 Kinase; Insulin-Stimulated MAP2 Kinase; EC 2.7.11.24; P44-ERK1; P44-MAPK; P44ERK1; P44MAPK; ERK-1; ERT2; Extracellular Signal-Related Kinase 1; MAP Kinase Isoform P44; MAP Kinase; EC 2.7.11; HS44KDAP; HUMKER1A; P44mapk; P44erk1; MAPK 1; MAPK 3; MAPK1; Mitogen-Activated Protein Kinase 1; ERK2; Extracellular Signal-Regulated Kinase 2; MAPK2; PRKM1; PRKM2; ERK; Mitogen-Activated Protein Kinase 2; MAP Kinase 1; MAP Kinase 2; EC 2.7.11.24; P42-MAPK; P41mapk; MAPK; ERK-2; ERT1; Protein Tyrosine Kinase; ERK2; MAP Kinase Isoform P42; EC 2.7.11; P42MAPK; P41MAPK; MAPK 1; NS13; P38; P40; P41

Background

Gene Name: MAPK1/3

NCBI Gene Entry: [5595/5594](#)

UniProt Entry: [P27361/ P28482](#)

Application Information

Molecular Weight: Predicted, 43,41 kDa, observed, 42,44 kDa

Clonality: Rabbit monoclonal antibody

Clone ID: 23GB4510

Species Reactivity: Human, mouse, rat

Applications Tested: Western blotting (WB), flow cytometry (FCM), immunocytochemistry (IC)

Immunogen

A synthesized peptide derived from human ERK1/2

Isotype

Rabbit IgG

Storage Buffer

Supplied in PBS (pH 7.4) containing 50% glycerol, and 0.02% sodium azide.

Storage

Store at -20 °C for one year.

Recommended Dilutions

SUPPORT

SUPPORT@GENUINBIOTECH.COM
TEL: +1-540-855-7041

ORDERS

SALES@GENUINBIOTECH.COM
FAX: +1-540-855-7041

WWW.GENUINBIOTECH.COM

KD-Validated Anti-ERK1/2 Recombinant Rabbit Monoclonal Antibody

PAGE 2

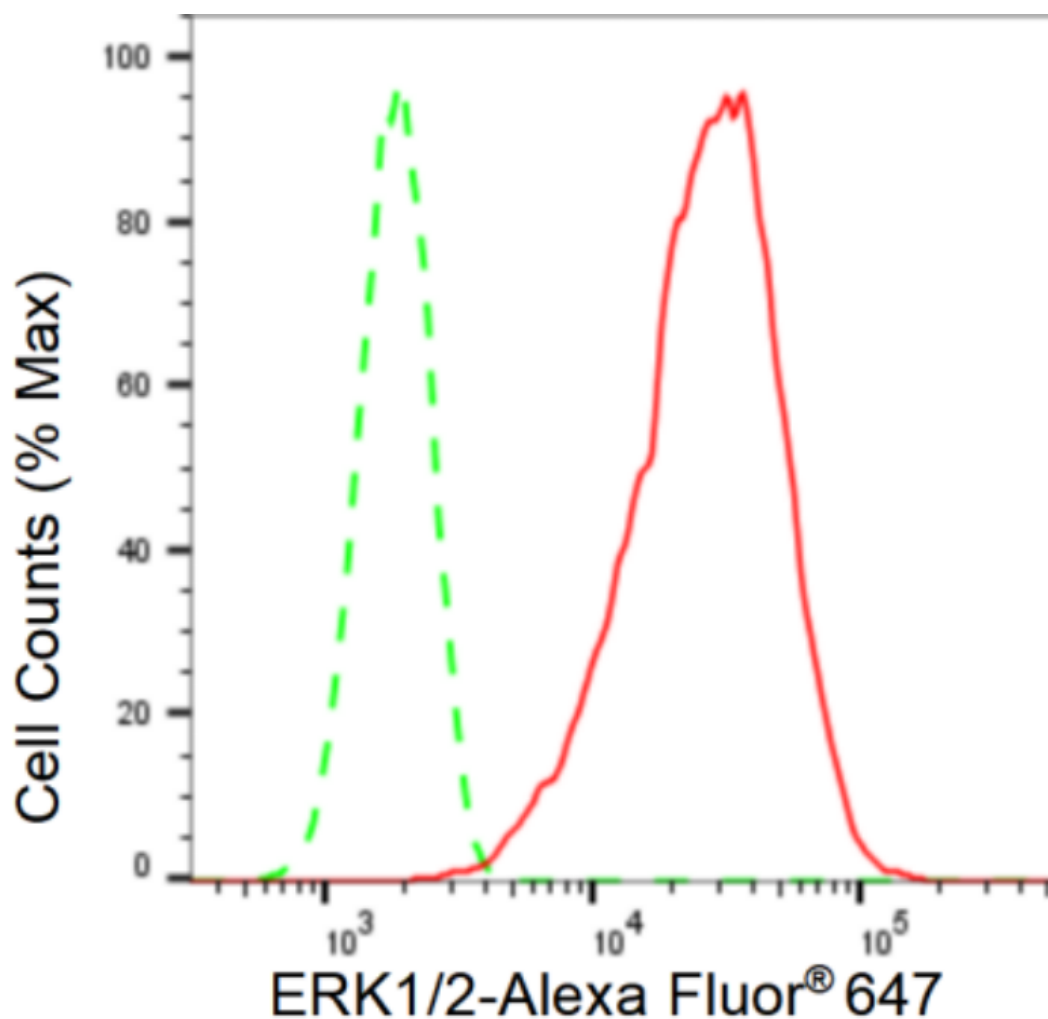
Western Blotting (WB): 1:1,000-1:5,000

Flow Cytometry (FCM): 1:2,000

Immunocytochemistry (IC): 1:100-1:1,000

Note: This product is for research use only.

Validation Data



Copyright ©2024 Genuin Biotechnologies LLC

Flow cytometric analysis of ERK1/2 expression in C2C12 cells using ERK1/2 antibody (Cat#61797, 1:2,000). Green, isotype control; red, ERK1/2.

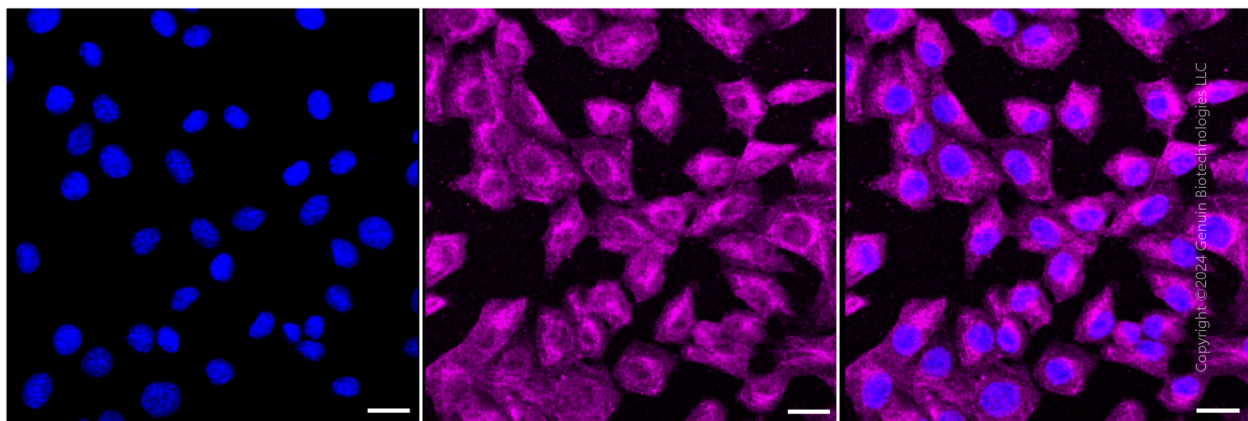
SUPPORT

SUPPORT@GENUINBIOTECH.COM
TEL: +1-540-855-7041

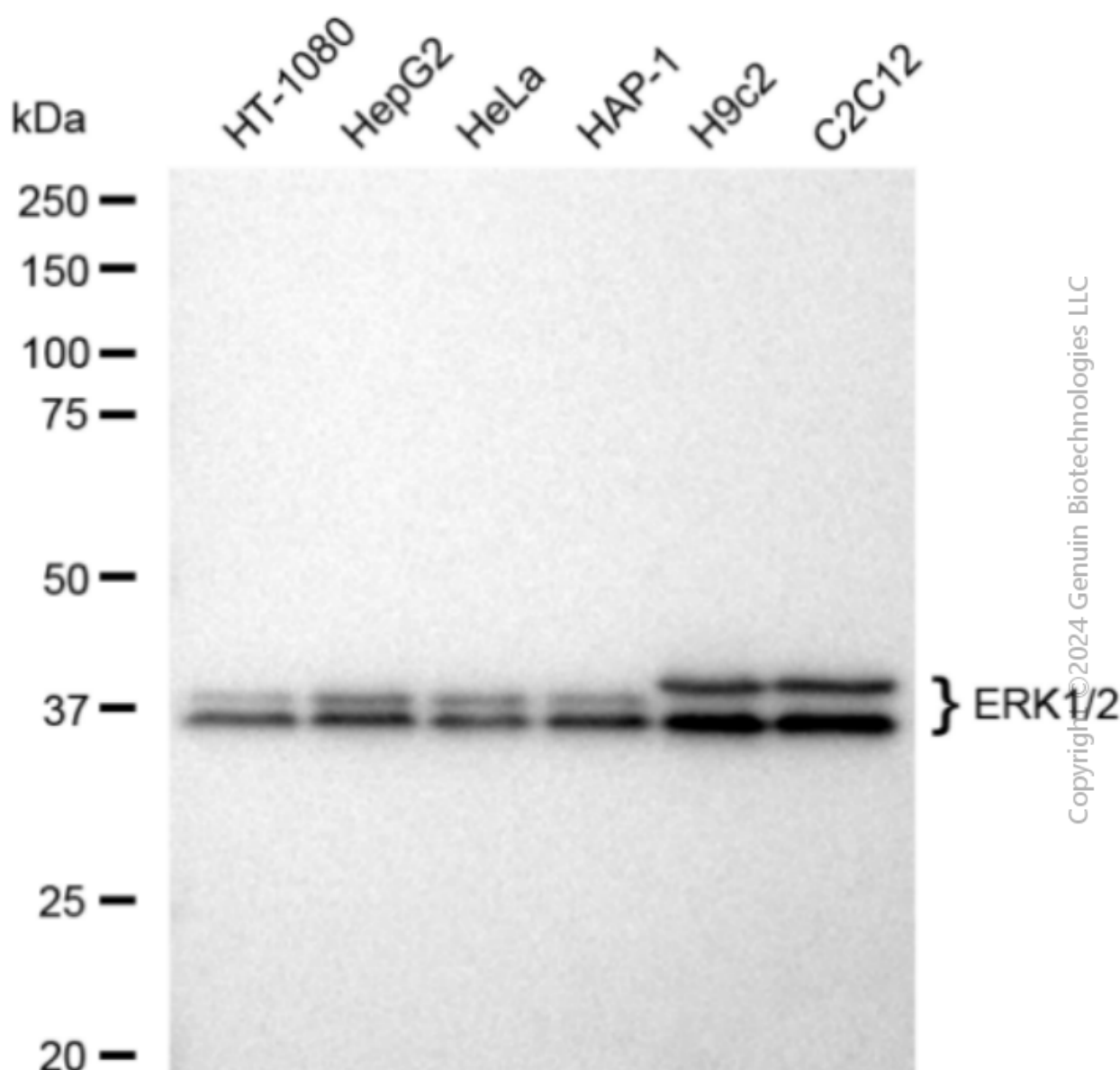
ORDERS

SALES@GENUINBIOTECH.COM
FAX: +1-540-855-7041

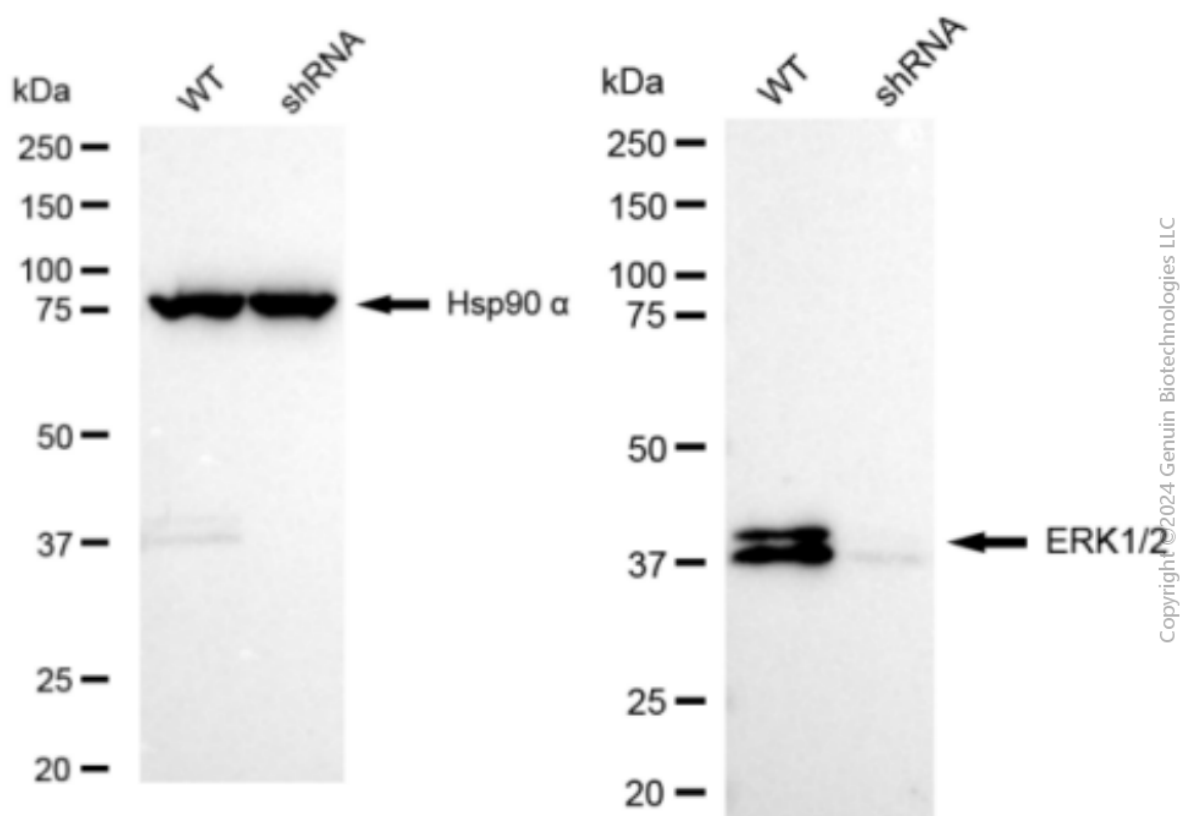
WWW.GENUINBIOTECH.COM



Immunocytochemical staining of C2C12 cells with ERK1/2 antibody (Cat#61797, 1:1,000). Nuclei were stained blue with DAPI; ERK1/2 was stained magenta with Alexa Fluor® 647. Images were taken using Leica stellaris 5. Protein abundance based on laser Intensity and smart gain: Medium. Scale bar: 20 μ m.



Western blotting analysis using anti-ERK1/2 antibody (Cat#61797). Total cell lysates (30 µg) from various cell lines were loaded and separated by SDS-PAGE. The blot was incubated with anti-ERK1/2 antibody (Cat#61797, 1:5,000) and HRP-conjugated goat anti-rabbit secondary antibody (Cat#201, 1:20,000) respectively. Image was developed using FeQ™ ECL Substrate Kit (Cat#226).



Western blotting analysis using anti-ERK1/2 antibody (Cat#61797). ERK1/2 expression in wild type (WT) and ERK1/2 shRNA knockdown (KD) HeLa cells with 30 µg of total cell lysates. Hsp90 α serves as a loading control. The blot was incubated with anti-ERK1/2 antibody (Cat#61797, 1:5,000) and HRP-conjugated goat anti-rabbit secondary antibody (Cat#201, 1:20,000) respectively. Image was developed using FeQ™ ECL Substrate Kit (Cat#226).