

KD-Validated Anti-Aminoacylase 1 Mouse Monoclonal Antibody



Catalog #: 61798

Aliases

ACY1; Aminoacylase 1; N-Acyl-L-Amino-Acid Amidohydrolase; Aminoacylase-1; EC 3.5.1.14; ACY-1; Epididymis Secretory Protein Li 5; EC 3.5.1; HEL-S-5; Acylase; ACY1D

Background

Gene Name: ACY1

NCBI Gene Entry: [95](#)

UniProt Entry: [Q03154](#)

Application Information

Molecular Weight: Predicted, 46 kDa; observed, 42 kDa

Clonality: Mouse monoclonal antibody

Clone ID: 25GB3810

Species Reactivity: Human, mouse, rat

Applications Tested: Western blotting (WB), immunocytochemistry (IC)

Immunogen

Recombinant protein of human ACY1

Isotype

Mouse IgG1

Storage Buffer

Supplied in PBS (pH 7.4) containing 50% glycerol, and 0.02% sodium azide.

Storage

Store at -20 °C for one year.

Recommended Dilutions

Western Blotting (WB): 1:500-1:2,500

Immunocytochemistry (IC): 1:100-1:1,000

Note: This product is for research use only.

Validation Data

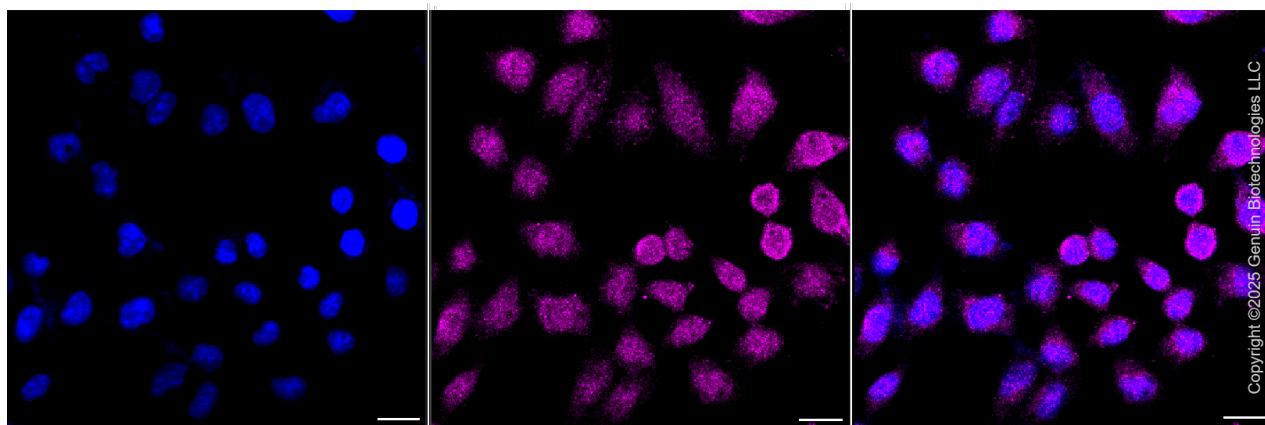
SUPPORT

SUPPORT@GENUINBIOTECH.COM
TEL: +1-540-855-7041

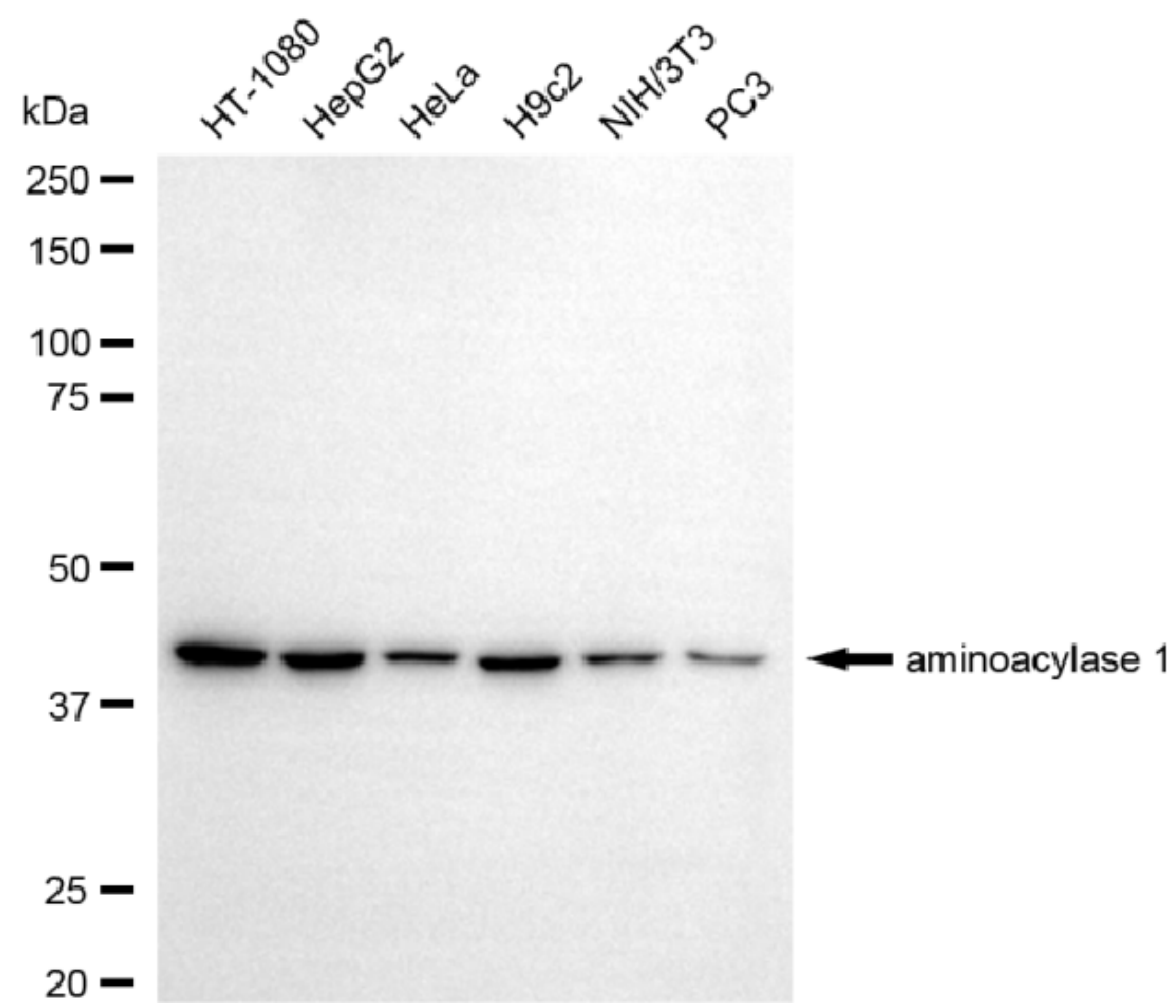
ORDERS

SALES@GENUINBIOTECH.COM
FAX: +1-540-855-7041

WWW.GENUINBIOTECH.COM



Immunocytochemical staining of HepG2 cells with anti-aminoacylase 1 antibody (Cat#61798, 1:1,000). Nuclei were stained blue with DAPI; aminoacylase 1 was stained magenta with Alexa Fluor® 647. Images were taken using Leica stellaris 5. Protein abundance based on laser Intensity and smart gain: Low. Scale bar, 20 μ m.



Western blotting analysis using anti-aminoacylase 1 antibody (Cat#61798). Total cell lysates (30 μ g) from various cell lines were loaded and separated by SDS-PAGE. The blot was incubated with

SUPPORT

SUPPORT@GENUINBIOTECH.COM
TEL: +1-540-855-7041

ORDERS

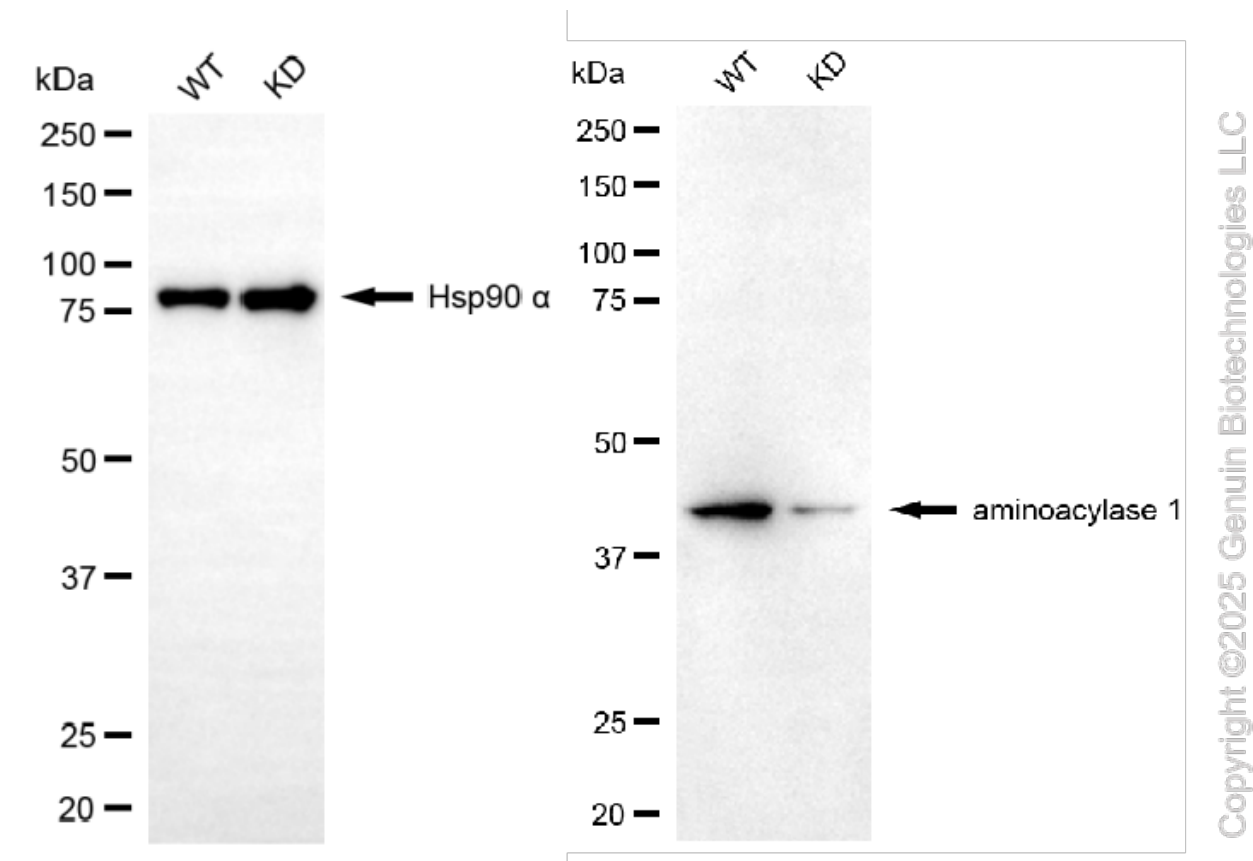
SALES@GENUINBIOTECH.COM
FAX: +1-540-855-7041

WWW.GENUINBIOTECH.COM

KD-Validated Anti-Aminoacylase 1 Mouse Monoclonal Antibody

PAGE 3

anti-aminoacylase 1 antibody (Cat#61798, 1:2,500) and HRP-conjugated goat anti-mouse secondary antibody (Cat#101, 1:20,000) respectively. Image was developed using FeQ™ ECL Substrate Kit (Cat#226).



Western blotting analysis using anti-aminoacylase 1 antibody (Cat#61798). Aminoacylase 1 expression in wild-type (WT) and aminoacylase 1 (ACY1) knockdown (KD) HeLa cells with 20 μ g of total cell lysates. Hsp90 α serves as a loading control. The blot was incubated with anti-aminoacylase 1 antibody (Cat#61798, 1:2,500) and HRP-conjugated goat anti-mouse secondary antibody (Cat#101, 1:20,000) respectively. Image was developed using FeQ™ ECL Substrate Kit (Cat#226).

SUPPORT

SUPPORT@GENUINBIOTECH.COM
TEL: +1-540-855-7041

ORDERS

SALES@GENUINBIOTECH.COM
FAX: +1-540-855-7041

WWW.GENUINBIOTECH.COM